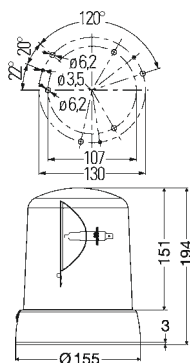
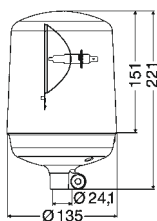


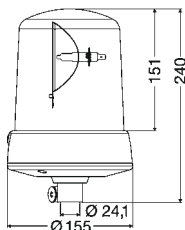
KL 7000



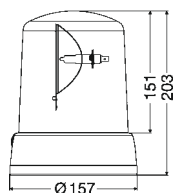
KL 7000 F



KL 7000 R



KL 7000 FL



KL 7000 M

Product advantages

- Unit consisting of high-shine metallised reflector and bulb produces excellent light values
- Maximum running smoothness through maintenance-free drive bearings and double-belt technology
- Multi-voltage function provides constant rotating frequency — even in the event of fluctuations in the vehicle electric system
- Dome with pressure-point fixing for easy mounting and bulb replacement

Technical data

	12 V	24 V
Rated voltage (U_N):	12 V	24 V
Operating voltage (U_B):	10.8 – 13.8 V	21.6 – 27.6 V
Interference suppression:	Conducted class 5 (CISPR25)	
Rotational speed:	160 rpm	
Power consumption, bulb:	55 W	70 W
Total current consumption:	5.5 A	3.5 A
Operating temperature range:	-40 °C to +60 °C	
Mounting (KL 7000 F):	From above or below	
Protective category:	IP 5K4K, IP 9K (resistant to high-pressure cleaner)	

Type approval:

Lighting homologation:	E1 001240
EMC compatibility:	e1 021740
General:	ECE-R65

Product variants	Part number
KL 7000 F , fixed attachment, blue, 12 V	2RL 008 061-001
KL 7000 F , fixed attachment, blue, 24 V	2RL 008 061-011
KL 7000 R , pipe-socket fixing, blue, 12 V	2RL 008 060-001
KL 7000 R , pipe-socket fixing, blue, 24 V	2RL 008 060-011
KL 7000 FL , flexible pipe-socket fixing, blue, 12 V	2RL 008 063-001
KL 7000 FL , flexible pipe-socket fixing, blue, 24 V	2RL 008 063-011
KL 7000 M , magnetic fixing, blue, 12 V	2RL 008 062-001
KL 7000 M , magnetic fixing, blue, 24 V	2RL 008 062-011

Accessories	Part number
Rubber base, flat (for KL 7000 F)	9GD 862 164-001
Rubber base, wedge-shaped (for KL 7000 F)	9GD 863 033-001

Further accessories and spare parts can be found in the overall brochure "Emergency Vehicles".

