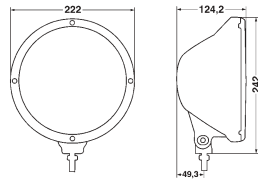




BRIEF INFORMATION

Rallye 3003 auxiliary spotlight – with position light



Upright mounting.
Inclination angle -45° to $+90^{\circ}$

PRODUCT CHARACTERISTICS

- The spotlight housing is made of highest quality plastic. The particularly light, sturdy form of the premium housing is protected worldwide
- The dimensions are particularly well-suited to trucks, large pick-ups and off-road vehicles
- ECE type approved (E) for 12 and 24 volt vehicle electric systems
- Clear real-glass lens
- Suitable for H1 12 V/55 W or H1 24 V/70 W spotlight and W5W/12 V/5 W or W5W/24 V/5 W position light

DELIVERY SCOPE

- H1 spotlight with position light socket and alternative blanking plug
- Attachment material
- Mounting instructions

Rallye 3003 – Ø 22 cm – weight: 1,350 g

With silver-grey design ring:

Spotlight (ECE Ref. 37.5)

Spotlight (ECE Ref. 17.5)

With chrome ring:

Spotlight (ECE Ref. 37.5)

1F8 009 797-021

1F8 009 797-121

1F8 009 797-101

ACCESSORIES

Protective cap*

8XS 168 664-001

* Protective caps are not legally authorised in some countries. Before use on public roads, please check with your competent government agency.

RANGE OVERVIEW



Rallye 3003 Blue – Ø 22 cm

H1 spotlight with position light and blue end lens.
ECE type approval (E). Weight: 1,350 g.

Spotlight, 12 V or 24 V (ECE Ref. 37.5)	1F8 009 797-031
Spotlight, 12 V or 24 V (ECE Ref. 17.5)	1F8 009 797-131
With chrome ring (without illustration)	1F8 009 797-111



Rallye 3003 Compact – Ø 17 cm

H1 spotlight with ECE type approval (E). Weight: 585 g.

Spotlight, 12 V or 24 V (ECE Ref. 37.5)	1F3 010 119-011
Spotlight, 12 V or 24 V (ECE Ref. 17.5)	1F3 010 119-001



Rallye 3003 Compact Blue – Ø 17 cm

H1 spotlight with blue end lens.
ECE type approval (E). Weight: 585 g.

Spotlight, 12 V or 24 V (ECE Ref. 37.5)	1F3 010 119-021
---	-----------------

The Rallye 3003 auxiliary spotlight is available in two sizes:

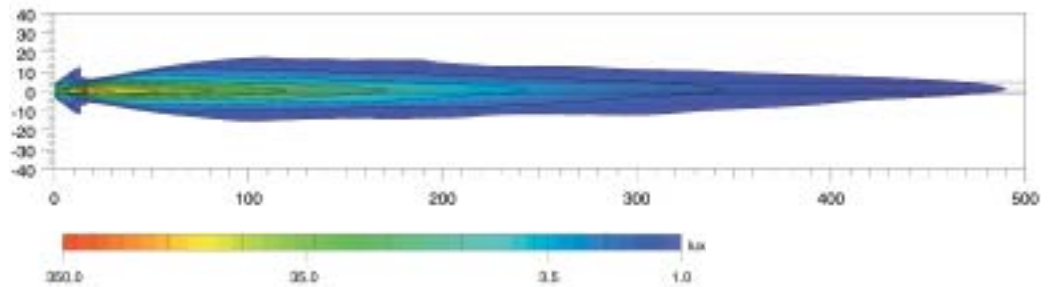
Ø 22 cm – Rallye 3003

Ø 17 cm – Rallye 3003 Compact



LIGHTING

Rallye 3003 (Ref. 37.5)



Lux is a unit used to measure light.

It provides the luminous flux which hits a certain surface from the light source. For example; an office should be illuminated with at least 500 Lux and the human eye can still read a newspaper without any problems at 1 Lux. The values under the Lux axis show where the respective illumination intensity is achieved in the light distribution diagrams.

Ref. 50, 40, 37.5, 17.5 and 12.5:

The reference number (Ref.) is a value which refers to the spotlight. According to the ECE regulation; the reference number may not exceed an upper limit of 100 per vehicle. The two values of the standard high beams (left and right main headlights) plus the value of other mounted spotlights are added. The value is entered on the cover lens of approved headlights.



Experience light.

Auxiliary headlights from HELLA. The right light for every application. Test online now!

www.hella.com/lightshow

www.hella.com/truck

www.hella.com/offroad

www.hella.com/eliver