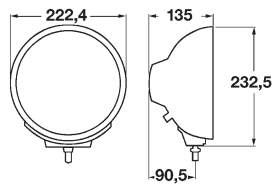




BRIEF INFORMATION

Luminator auxiliary spotlight –
with position light, Ref. 50



Upright mounting.
Inclination angle: +/- 7°

DELIVERY SCOPE

- H1 spotlight with position light socket and alternative blanking plug
- With cable set
- Attachment material
- Mounting instructions

PRODUCT CHARACTERISTICS

- The ideal supplement for better light performance for trucks, off-road vehicles and SUVs.
- High-boost reflector 10 plus: supplies more than 10 % extra illumination power thanks to newly developed reflectors – compared to the Rallye 3003 with Ref. 37.5
- Sturdy metal casing made of die-cast zinc
- Visually striking high-shine chrome plating
- ECE type tested (E)
- Suitable for H1/12 V/55 W or H1/24 V/70 W spotlight and W5W/12 V/5 W or W5W/24 V/5 W position light
- Clear real-glass lens
- Ø 22 cm
- Weight: 2,600 g

ACCESSORIES

Protective cap*

8XS 147 945-021

* Protective caps are not legally authorised in some countries. Before use on public roads, please check with your competent government agency.

RANGE OVERVIEW



Luminator chromium – high-polish chrome-plating

Spotlight (ECE Ref. 50), 12 V or 24 V

1F8 007 560-411



Luminator Chromium Blue – high-polish chrome-plating

Real glass lens in clear blue

Spotlight (ECE Ref. 50), 12 V or 24 V

1F8 007 560-421



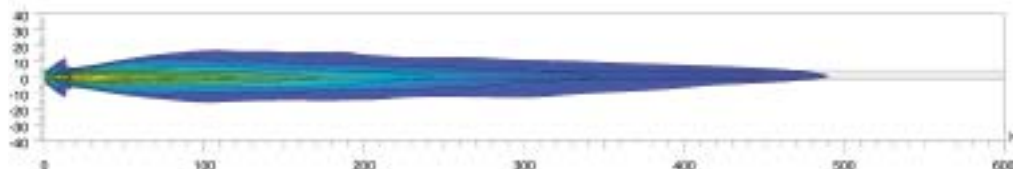
Luminator Metal – with matt black long-life paintwork

Spotlight (ECE Ref. 50), 12 V or 24 V

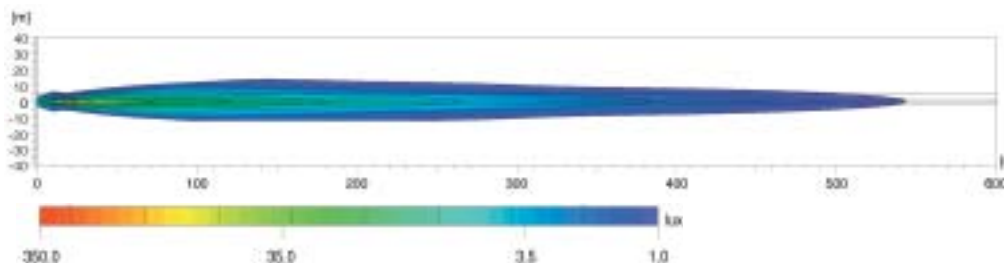
1F8 007 560-401

LIGHT DISTRIBUTION COMPARISON

Luminator with reference number 37.5



Luminator with reference number 50



High-boost reflector plus 10

Lux is a unit used to measure light.

It provides the luminous flux which hits a certain surface from the light source. For example; an office should be illuminated with at least 500 Lux and the human eye can still read a newspaper without any problems at 1 Lux. The values under the Lux axis show where the respective illumination intensity is achieved in the light distribution diagrams.

Ref. 50, 40, 37.5, 17.5 and 12.5:

The reference number (Ref.) is a value which refers to the spotlight. According to the ECE regulation; the reference number may not exceed an upper limit of 100 per vehicle. The two values of the standard high beams (left and right main headlights) plus the value of other mounted spotlights are added. The value is entered on the cover lens of approved headlights.



Experience light.

Auxiliary headlights from HELLA. The right light for every application. Test online now!

www.hella.com/lightshow

www.hella.com/truck

www.hella.com/offroad

www.hella.com/eliver