



- *83 mm-LED combination lamp (with 3 functions)*
- *24 V model*
- *Ideal for lorries, buses and motor-caravans*

## Product Features



### High water resistance

Tested according to DIN Norm IP 6K6 and IP 6K7 (dust-tight, protected against high-pressure water and brief submersion).

### Overvoltage protection

Overvoltage protection ensures that the lamp is not damaged even with voltage peaks (ISO 7637).

### Installation

A central bolt including an anti-twist protection allows practical attachment.

### LED lighting technology

The high-performance LEDs offer an excellent signal effect with very low power consumption (Indicator function: 4 W, Position light: 1 W, Daytime running light: 4 W).

### Long service-life with low current consumption

"Fit and Forget": with innovative LED technology means the light has a long life with low energy consumption.

### Lens

Acrylic lens for improved UV-resistance and impact strength.



# Daytime running light

## Current legislation situation concerning daytime running light

The subject of daytime running light is becoming more and more important in Europe and overseas. Transport ministries, automobile clubs and motorists have recognised the great safety advantage offered by this lighting system. As of February 2011, all new vehicles (commercial vehicles as of the middle of 2012) must be equipped with daytime running lights.

## Benefits of driving with daytime running lights

- Automatic activation/deactivation due to a changeover relay
- Optimum recognisability in road traffic with lights on during the day
- The special signal effect of daytime running lights can be recognised better in daytime traffic than normal low beam, which leads to further protection against serious accidents.
- Goes easy on the normal lighting equipment\*
- No increase in fuel consumption\*
- Reduction of pollutant emissions\*

\* compared with driving with the low beam on



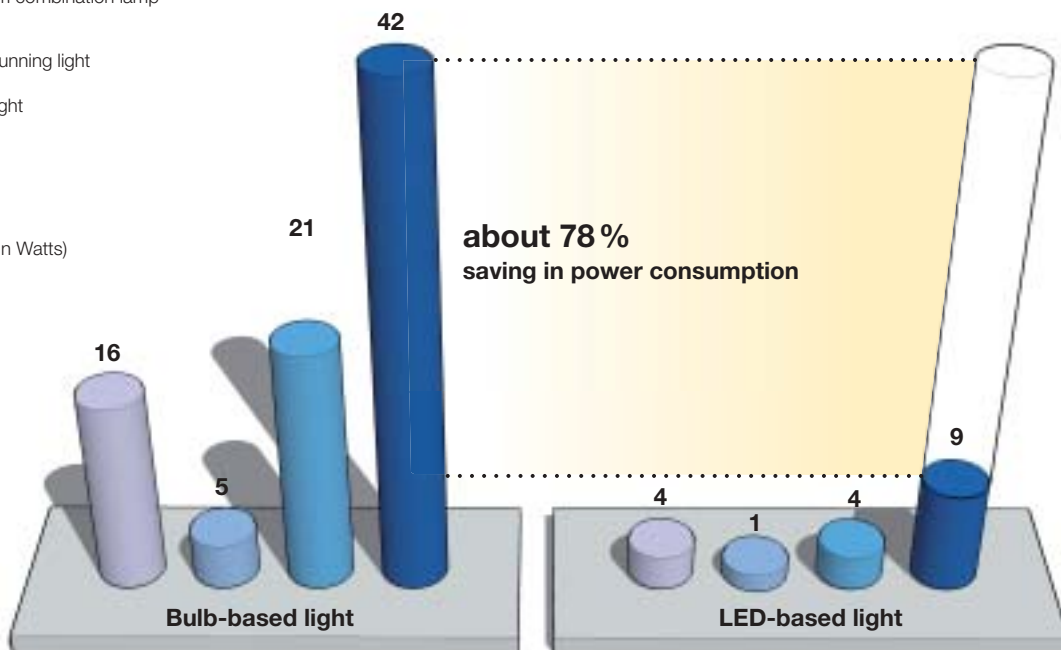
Fig.: Comparison of the two systems: low beam and daytime running light

# Comparison of the performance of bulb-based and LED light

Example: 83mm combination lamp

- Daytime running light
- Position light
- Indicator
- Total

(Specifications in Watts)

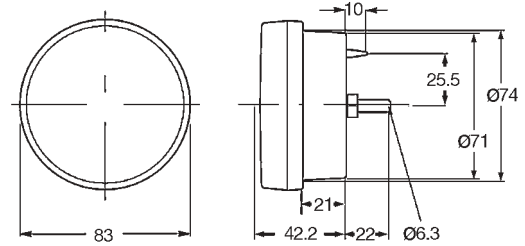


# Technical details

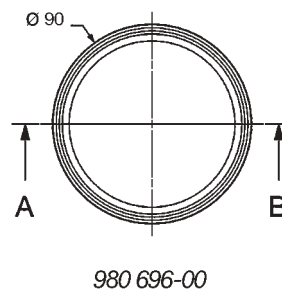
Technical data	
Type approval	E24 5854 Indicator ECE-Reg. No. 6 Position light ECE-Reg. No. 7 Daytime running light ECE-Reg. No. 87
Functions	Indicator, position light, daytime running light (the integrated electronics are set so that the daytime running light is dimmed when the indicator flashes)
Failure check	Indicator function is n-1 conform  (If an LED fails, the indicator function is suppressed.) To comply with the ECE-regulation no. 48, the vehicle system must control the power consumption and warn the driver if the indicator fails.  See: Hella cold query relay 5DS 980 810-00
Specification	Hella standard 67001 Class 10
Power consumption of bulb	Indicator: 4 W Position light: 1 W Daytime running light: 4 W
Operating voltage	24 VDC **
Overtoltage protection	At a voltage of over 35 Volt, the lamp is switched off
Voltage peak protection	according to ISO 7637
Operational safety thanks to polarity reversal protection	yes (up to -1000 V)
Operating temperature	-40 °C to +60 °C
Protection class	IP 6K6 and IP 6K7
EMC approval	E4 03 1962
Service life	"Fit and Forget" vehicle life
Attachment	1 central bolt including an anti-twist protection

\*\* Operation of the light with AC voltage or synchronised DC voltage is not permitted!! The individual light functions may only be operated with a vehicle fuse of max. 3 A (per lamp). If there is a control unit that limits the current in the vehicle equalling the above-mentioned specification, an extra fuse for the lamp is not needed.

## Technical drawing



### Optional accessory: Adapter ring 90 mm



## Range overview

Product photo	Part number	Specification	PU
	2BE 980 690-101	<b>Scope of supply:</b> 1 x 83 mm-LED 3-function lamp (pre-wired with 2.5 m long shielded 4-wire cable)	1
	9GD 980 696-001	<b>Optional accessory: Adapter ring 90 mm</b> The adapter ring serves to replace a 90 mm lamp with an 83 mm lamp. This means that vehicles that previously used a 90 mm lamp from Hella can now easily use the 83 mm lamp.	1

## Application example

