



## **Golf V** **Retrofit cornering light** **DynaView® Evo 2**

### **General points**

With the "DynaView Evo2", Hella has developed the world's first retrofit cornering light system that switches on in addition to the low beam. It combines the safety functions cornering light and fog light in compact round auxiliary lights. These are supplied with vehicle-specific covers and attachment parts (see Fig. 1).



Fig. 1

### **Design and function**

The cornering light "DynaView Evo2" comprises two different auxiliary lights (for right and left), each 90 millimetres in diameter, and an electronic control unit which is safely located in the engine compartment. The computer-calculated free-form reflectors have been specially designed for broad illumination of the areas alongside the front-end of the vehicle. The light is provided by powerful H7 halogen bulbs. A further advantage of this system is that the auxiliary lights are also approved as fog lights and can be activated via a separate switch if required.

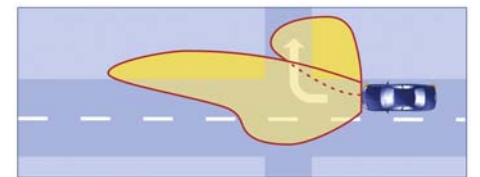


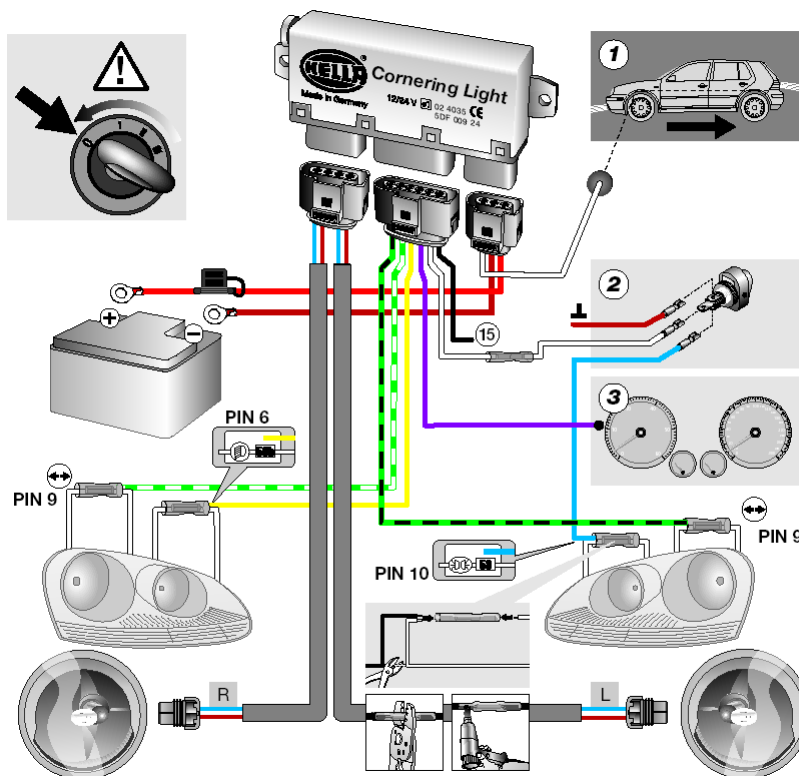
Fig. 2

The cornering light is activated when the indicator is switched on, or automatically by independent electronics when the vehicle is driving through bends (see Fig. 2). Here are the most important features:

- The ECE regulation allows the use of cornering light up to speeds of 40 km/h.
- In addition, the cornering light is activated when the vehicle is reversing. In this case, both lights are activated and illuminate the area alongside the vehicle.



- Activation of the cornering light is sudden, whereas the light is dimmed as it switches off.
- The yaw-rate sensor determines the respective transverse acceleration state of the vehicle permanently, in order to then transmit a switch-on pulse to the control unit when driving through a bend. This activates the respective light. After the bend, a dimmer gently switches the light cone off again.
- Independent of GPS systems.
- Real-glass lens.
- Weather-sealed housings.
- A pre-assembled professional harness is included in the scope of supply.



All the necessary steps are described in detail in the instructions. There is no need to spend time looking for a speed signal or making guesses about the wiring (see connection diagram above). When installing for the first time,

# Technical Information



the installation of the entire system takes about 2 hours.  
This cornering light cannot be installed on the GT and GTI versions, however, due to different front cowling.

Hella part no.: 1N0 009 436-801