



# Technical information

---

## PR numbers for VAG vehicles

### The significance of the PR numbers in the spare part catalogue

Sometimes the identification of spare parts for the brake system is not only made by looking at the chassis number and the vehicle registration date. In such cases the primary option number (the PR number) is also required. This PR number is stated as an additional piece of information (Fig. 1) in the catalogue and is found placed after the article number.

### Explanation of the vehicle manufacturer

"For process control reasons and in order to ensure unmistakable identification of the brake system in a vehicle, it is necessary to label brake parts with this additional PR number. Such identification be found on the service data medium for the relevant vehicle (sticker) in the service booklet (Fig. 2) or in the boot (Fig. 3)."

### Using the numbers when researching details on spare parts

The primary option number always has three characters and has been used for VW vehicles since 1999. As an example, when it comes to identifying brake systems, the number range of "1LX" (front disc brakes) or "1ZE" (front disc brakes, coated) is used.

Our illustration of this use shows the PR number, "1ZE", on the data sticker (Fig. 4). This designation is then found again in the spare part catalogue (Fig. 1) placed after the appropriate spare part. Such a system guarantees foolproof identifying and subsequent matching up of spare parts.

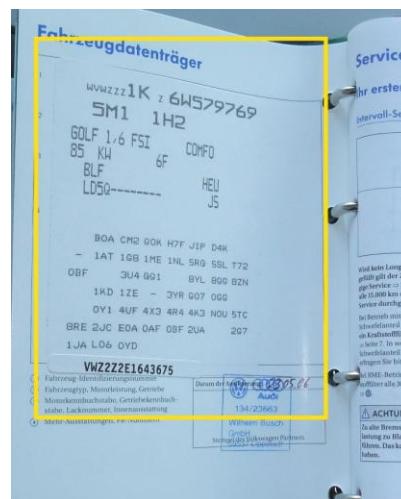


# Technical information

## Illustrations

/ 115	8DZ 355 201-371 K0169	Ate		PR 1ZE+9U1,1ZF Ø 288 mm
/ 102				PR 1LJ+9U1 Ø 312 mm
8/90	8DD 355 109-551 54207		Ø280x22,0x49,9	PR 1ZF,1ZM
/ 105				
3/99	8DD 355 109-571 54208		Ø288x25,0x49,8	PR 1ZE, 1ZP
/ 105				
6/90	8DD 355 109-521 54205PRO		Ø312x25,0x49,7	PR 1LJ
/ 150				
/ 136	8DD 355 109-561 54207PRO		Ø280x22,0x49,9	PR 1ZF,1ZM
/ 131				
/ 140	8DD 355 109-581 54208PRO		Ø288x25,0x49,8	PR 1ZE, 1ZP
/ 110				
/ 140				
/ 170	8DB 355 014-511 T1841	Ate	[-] 23587 20,3	PR 1ZE+9U0 Ø 288 mm PR 1LJ-9U0 Ø 312 mm
	8DB 355 010-581 T1376	Ate	[+] 23587 20,3	PR 1ZE+9U1,1ZP Ø 288 mm PR 1LJ+9U1 Ø 312 mm
	8DZ 355 201-371 K0169	Ate		PR 1ZE+9U1,1ZP Ø 288 mm PR 1LJ+9U1 Ø 312 mm

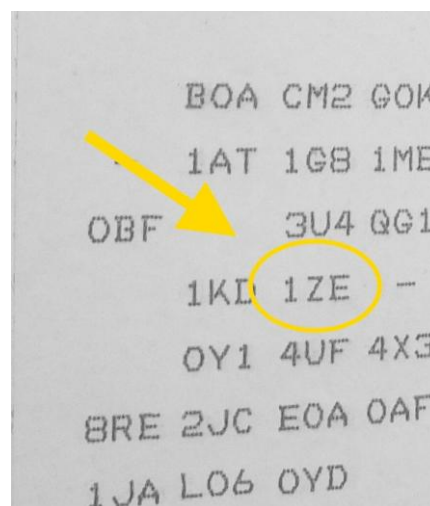
(Fig. 1)



(Fig. 2)



(Fig. 3)



(Fig. 4)