



Opel Omega with Xenon light

Bulb replacement

In order to replace the bulb of the low beam for the above-mentioned vehicle, proceed as follows:

Passenger side:

- Switch off the ignition
- Remove the cover underneath the headlight. To do this remove the holder clip (see Fig. 1).
- Push the cover out forwards carefully (see Fig. 2).
- Remove the attachment screws from the headlight (see Fig. 3). The lower attachment screw is located between the headlight and the front apron (see Fig. 4).
- Remove the headlight and separate all plug-type connections.
- Remove the screws from the cover cap (see Fig. 5) and take the cap off.
- Turn the high-voltage plug anti-clockwise and pull it off the Xenon burner (see Fig. 6).
- Replace the low beam bulb.
- The bulbs for the parking light, indicator and high beam can be replaced easily.
- Reinstall all the parts in a sensible order.

Driver side:

- The working steps are identical.

Check the system to make sure it is working correctly. Set the Xenon headlights with the aid of a diagnosis tester (read out fault code, basic setting of the beam setting etc.)

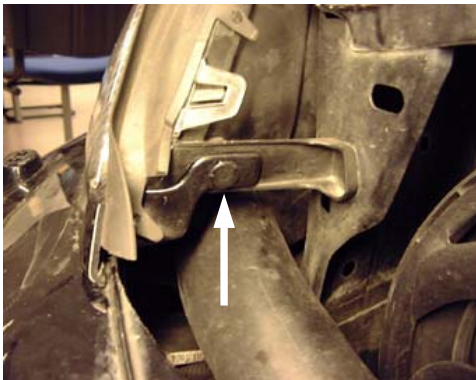


Fig. 1

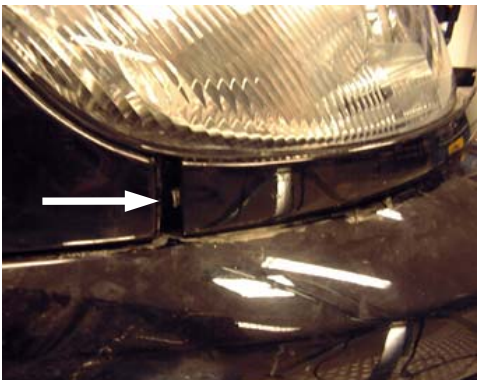


Fig. 2



Fig. 3



Fig. 4

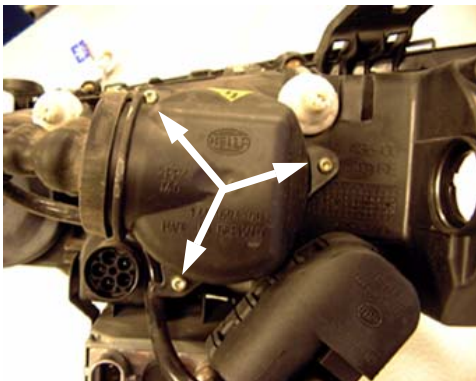


Fig. 5

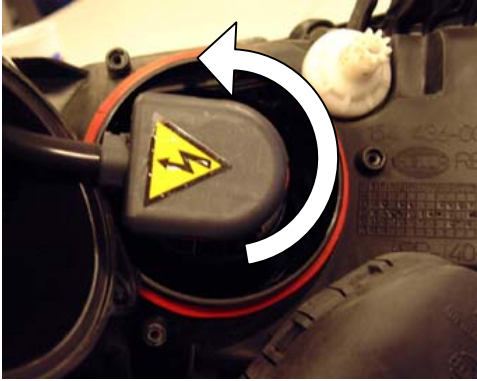


Fig. 6