



Volvo S40 / V40

From chassis no. 0000001 to 414999

Failure of the ABS system.

If the ABS system fails with these vehicles, one possible cause is a faulty voltage supply. When the fault occurs, the following fault codes can be stored:

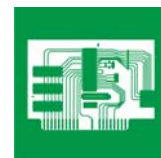
441 = Voltage supply solenoid valve

443 = Supply voltage

To eliminate the fault the voltage supply cables from the fuse box to the ABS unit have to be replaced by a new cable harness. To do this proceed as follows:

- Note the radio code and disconnect the battery.
- Disconnect the connecting plug from the ABS unit.
- Open the connecting plug and remove the voltage supply cable (up to model year 1997 pins 2 and 3, from model year 1998 pins 17 and 18). Cut the cables off as far as possible before the insulation (Fig. 1).
- Insert the new cables in the connecting plug (which cable is inserted in which slot is not important).
- Check the ground connections in the connecting plug for corrosion.
- Close the connecting plug again and install.
- Lay the new cable harness to the fuse box.
- Open the fuse box and remove the 50 Ampere fuse for the ABS system (Fig. 2).
- Loosen the 2 retaining screws and lift the fuse box as far as possible. Take the lower cover off, remove the red cable of the ABS fuse and cut it off as far as possible before the insulation (Fig. 2).
- Install the new cable harness in the fuse box (make sure the cable plug locks into place correctly).
- Install the components again in reverse order (torque of the fastening screws of the fuse box 10 Nm).
- Connect the battery and enter the radio code.

Bulletin



- Check the ABS system and delete the fault code.

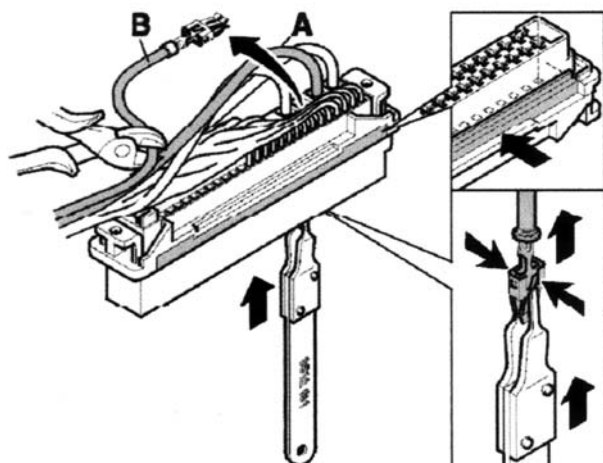


Fig. 1 (plug up to model year 1997)

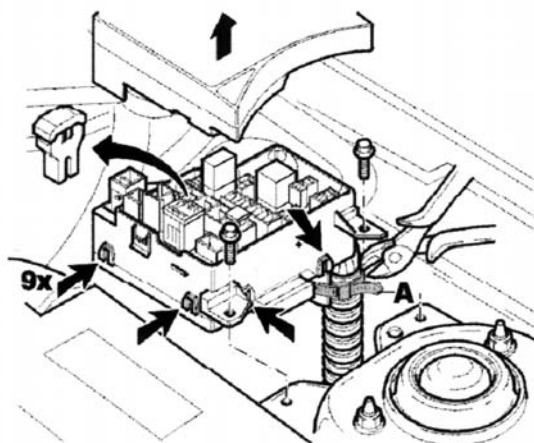


Fig. 2