

Skoda Fabia II - Functional failure; side direction indicator | HELLA

Skoda

Skoda Fabia II

Model year: 2007 - 2014

Functional failure; side direction indicator

If the above-mentioned vehicle (Fig.1) is found to have a malfunctioning side direction indicator (Fig.2), this may be caused by a defective connection cable.

If cables are not laid correctly (Fig.3), the connecting cable and insulation can wear through while the vehicle is being driven as a result of vibrations, shocks, etc. against sharp edges of the body or on sharp folded edges.

This can even lead to cable breakage/short circuit.



Abb. 1

Fig. 1



Abb. 2

Fig. 2

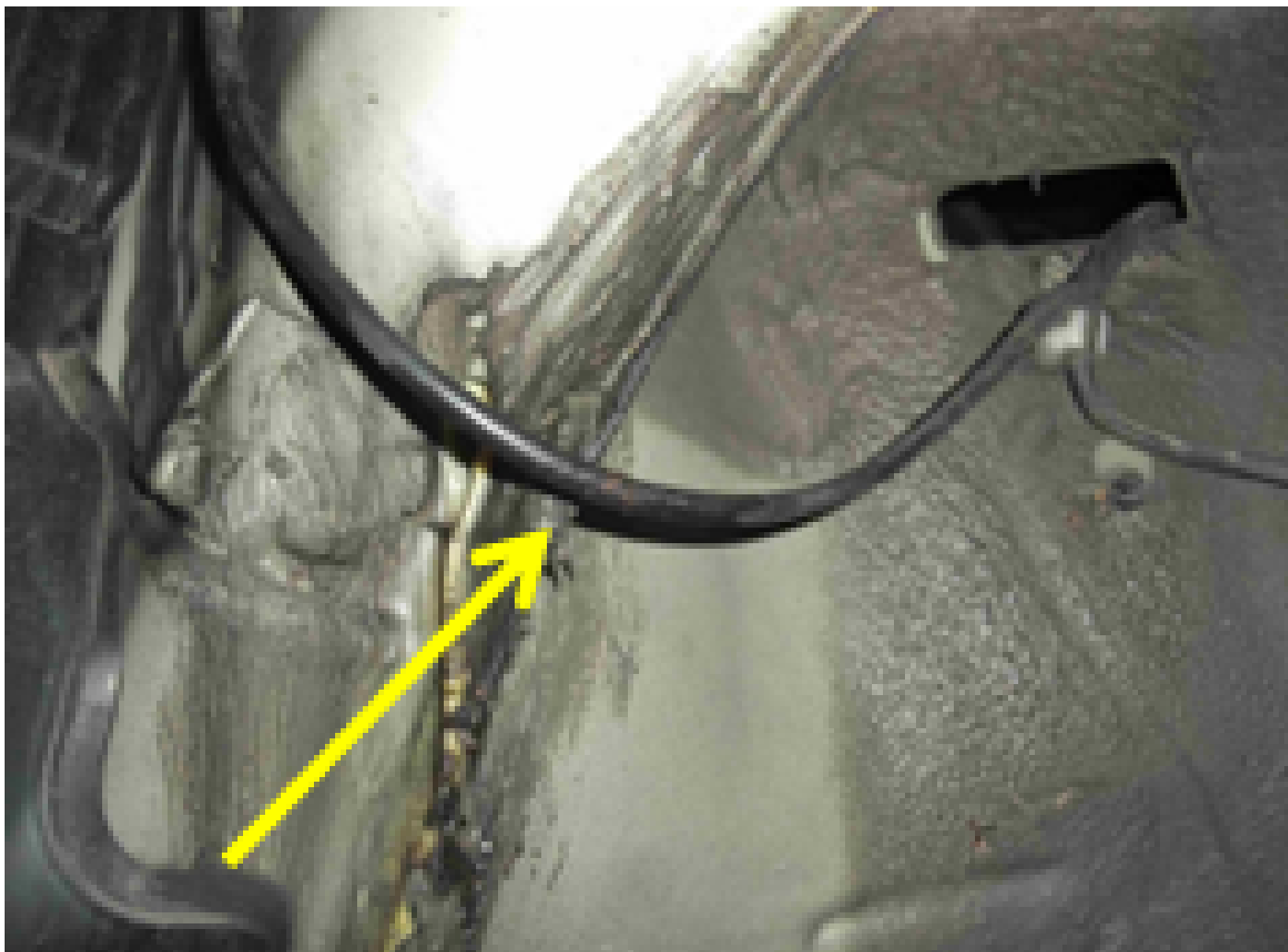


Fig. 3

- For fault analysis, disassemble the wheel and the wheelhouse covering. Repair and return the defective cable to full working order. Then ensure that the cables are laid correctly (edge protection).
- Check fuses and replace if necessary.

Carry out functional test (Fig. 4).

Reassemble parts in reverse order.



Carry out functional test (Fig.4)

Important safety notice

The following technical information and tips for practical use have been set up by HELLA in order to offer professional support to automotive workshops in their daily work. The information available here on this website is only to be used by appropriately trained specialist staff.

The reprinting, distribution, reproduction, exploitation in any form and disclosure of the contents of this document, even in part, is prohibited without our express written approval and indication of the source. The schematic illustrations, figures and descriptions are for explanation and presentation of the document text and cannot be used as a basis for installation or design. All rights reserved.