

Citroen C-Crosser - Engine misfires | HELLA

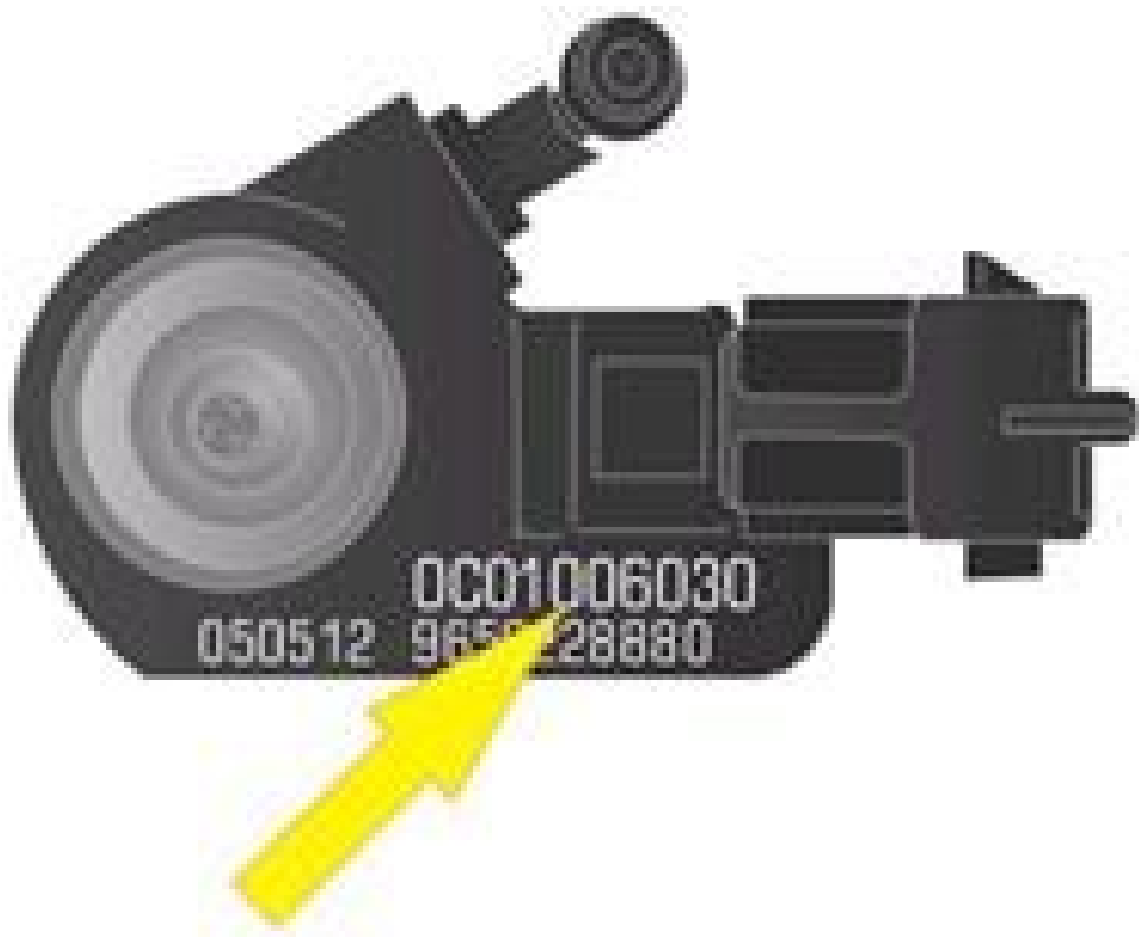
Citroen

C-Crosser

Model year: from 2007

All models with engine code 4 HN

Engine misfires



Very irregular engine running and poor starting performance may also be among the complaints. In this case, the injectors should be checked. Use a suitable diagnostic tester, to display the parameters, such as quantity correction comparison, injection timing BTDC, injection duration, and injection quantity. Compare actual against target values. If the measurements reveal unacceptable deviations, the defective injectors must be replaced. As each new injector has its own "classification code" (see Figure 1), they must be input in the ECU after the injectors have been replaced. This can be done in the 'Injector adjustment' menu. As part of this, the fuel filter and the return lines should also be replaced.