

Headlamp light patterns / light distribution | HELLA

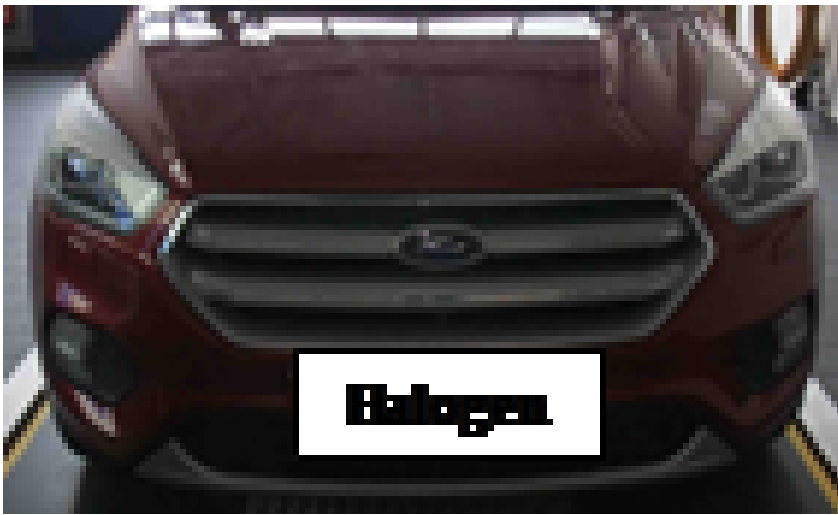
Ford Kuga, model year: 2017

Halogen headlamps

The measurement results of the light distribution of the halogen headlamp of a Ford Kuga produced in 2017 serve as the example. In this case, too, prior to carrying out the test, the correct location for beamsetting is to be selected and all requirements met.

Light patterns / light distribution with acceptable adjustment.





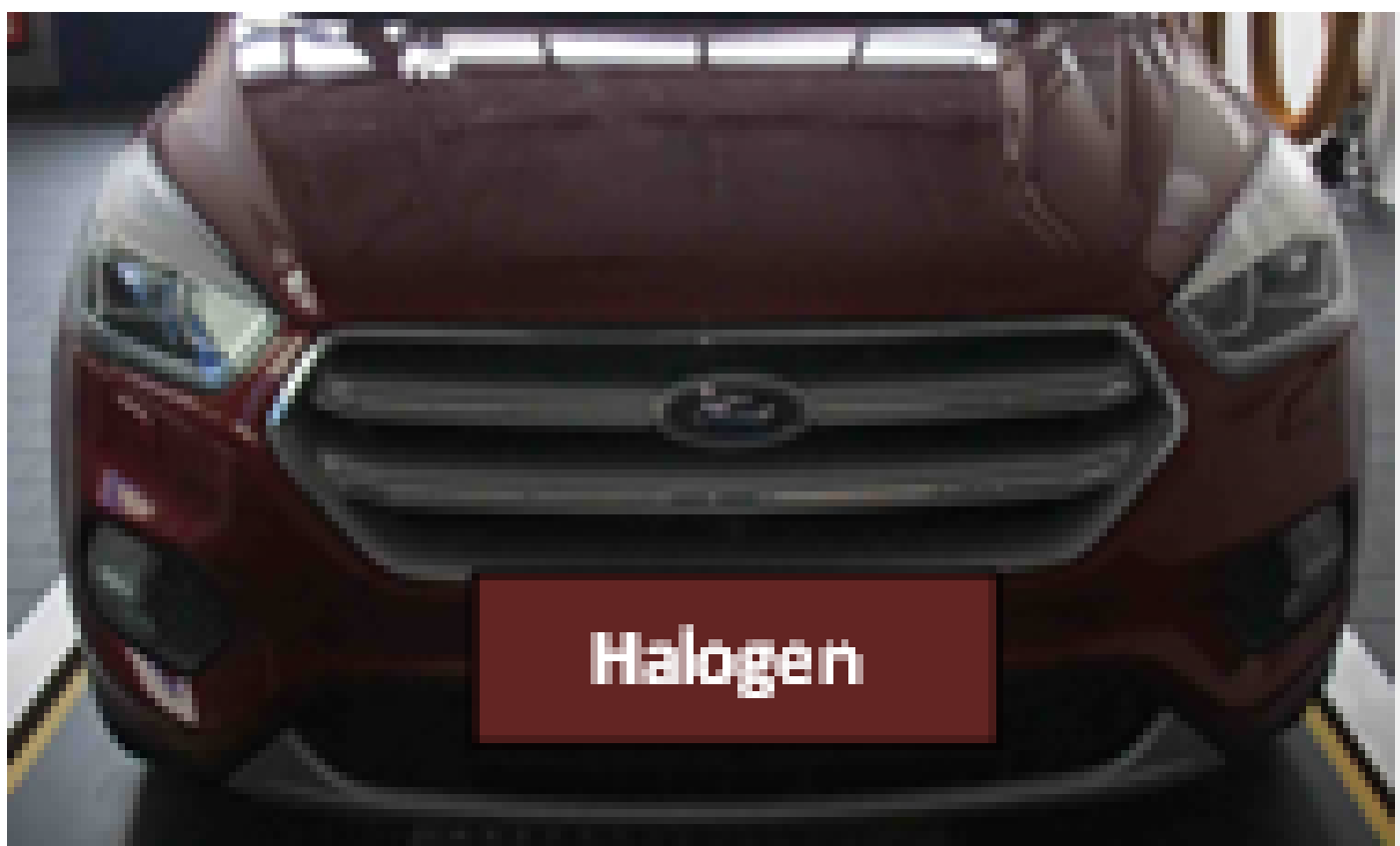
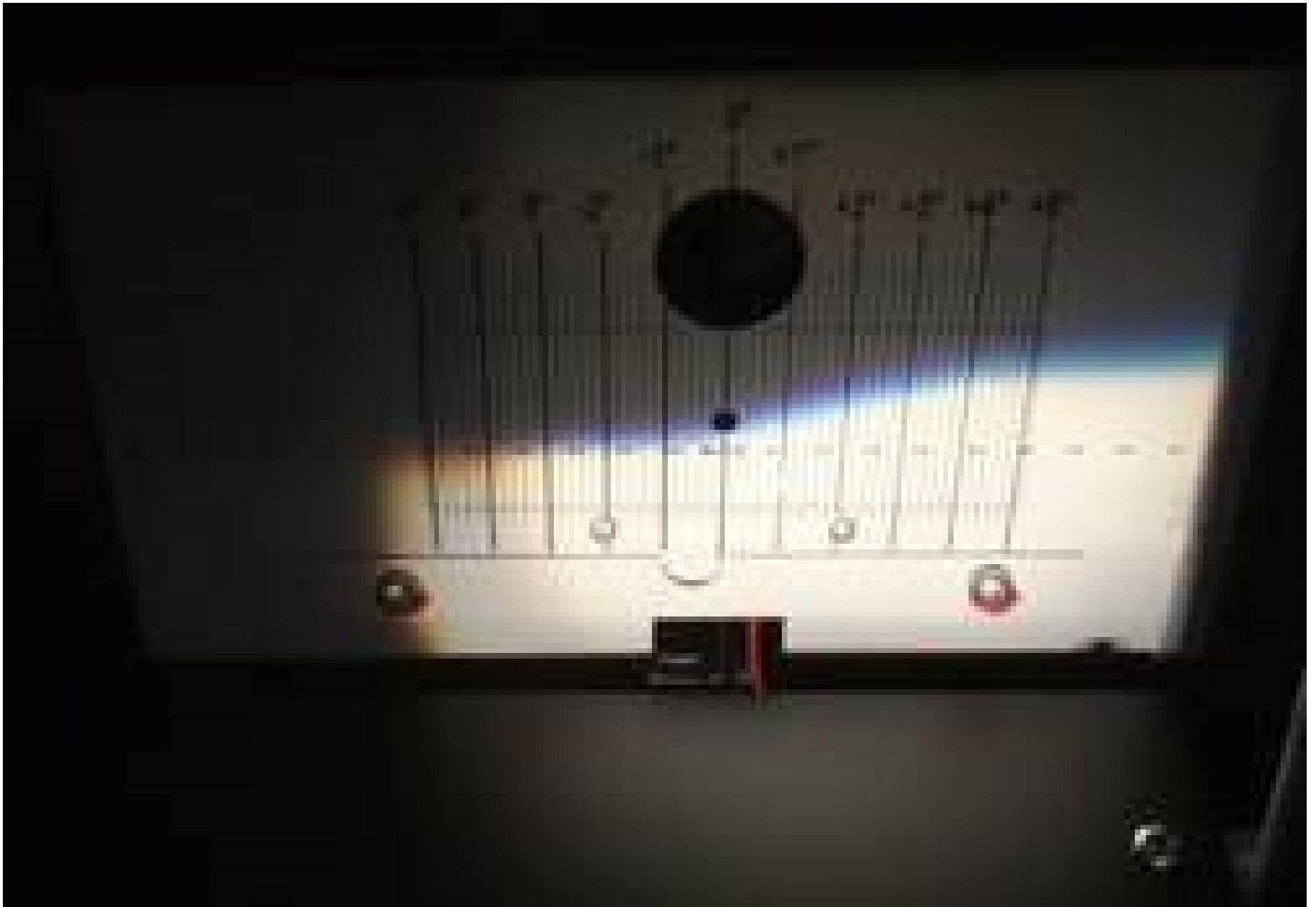
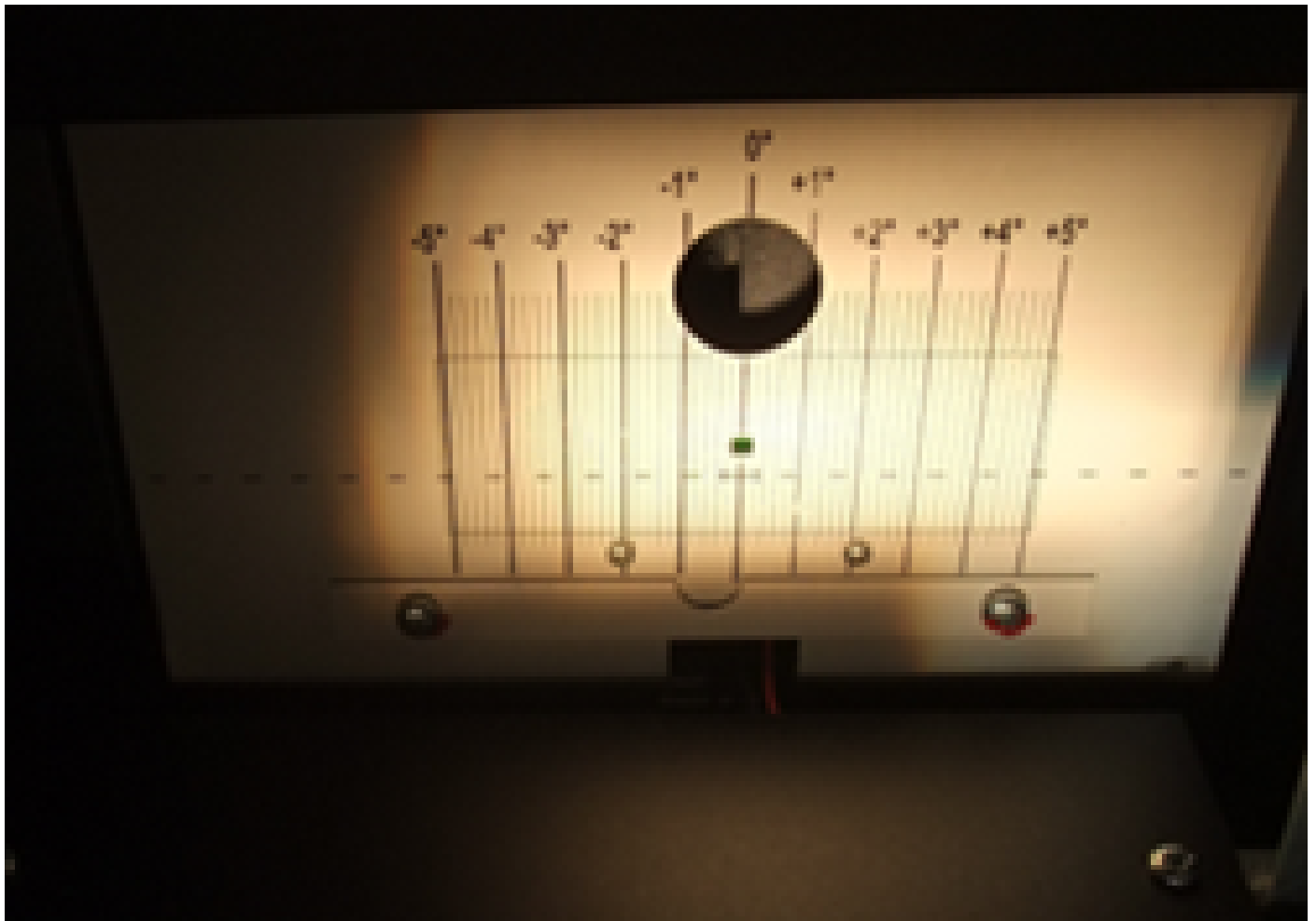


Fig.1: Vehicle front view

Beamsetter: analog

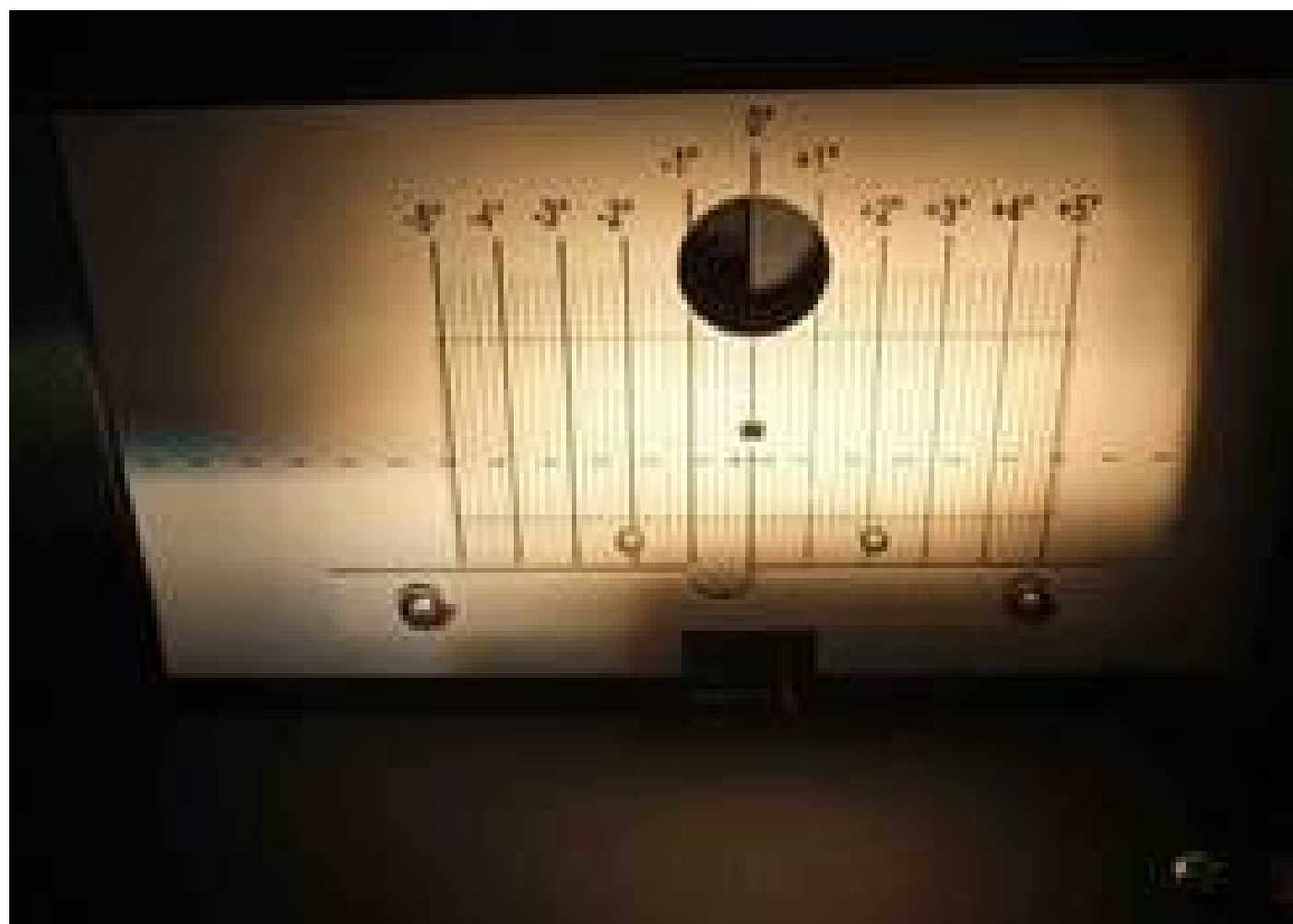
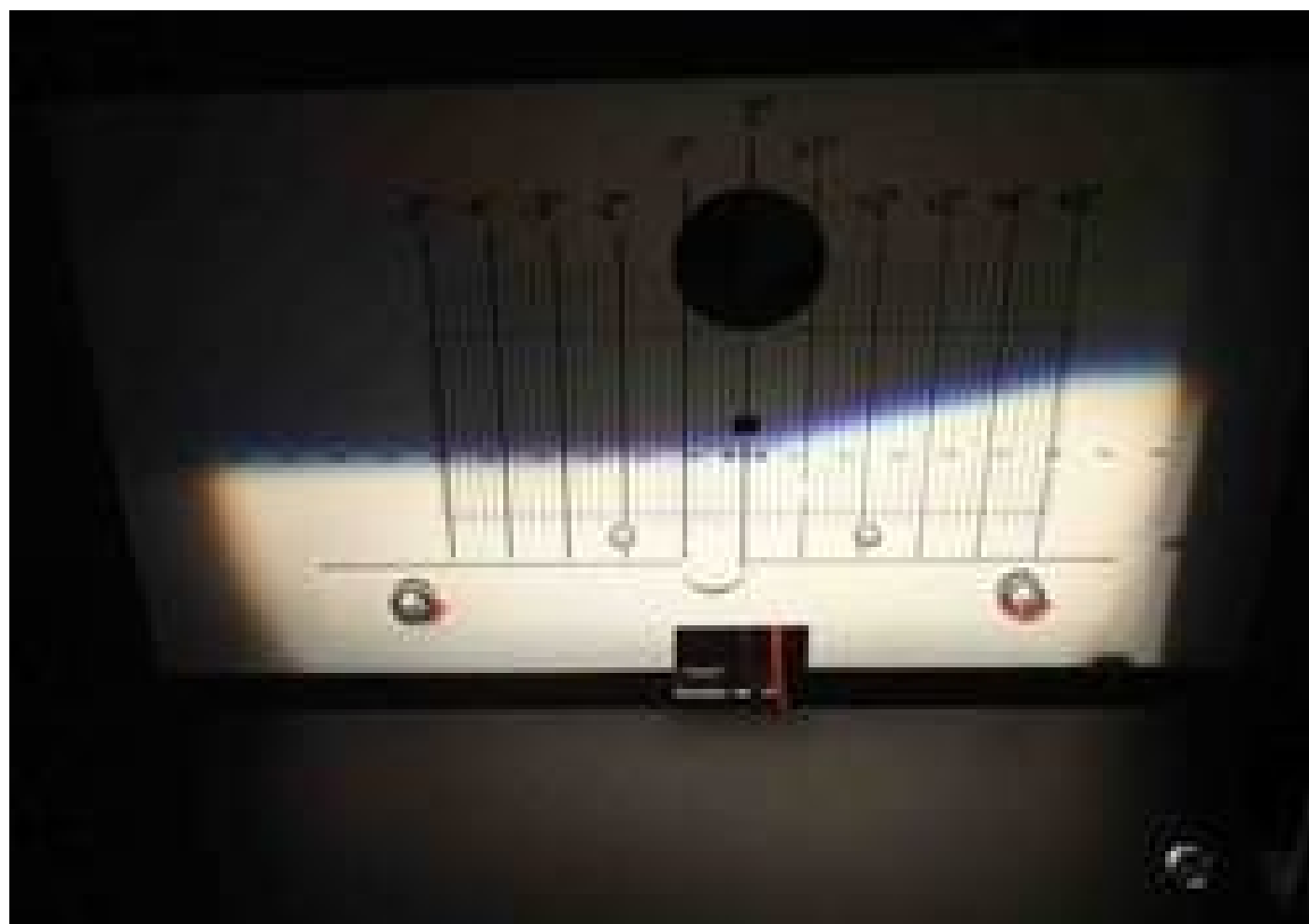




Light patterns - light distribution

Beamsetter / analog

Fig.2: - Low beam; H7;



Light patterns - light distribution

Beamsetter / analog

Fig.4: - Low beam; H7;

Ford Kuga = Halogen - version

Beam setting: mechanical

H7/H15

Hella article no.

The vehicle must stand on a level test surface and comply with country-specific regulations.

Beamsetter: digital / camera-based

Light patterns - light distribution

Beamsetter /

Fig.6: - Low beam; H7;



Light patterns - light distribution

Beamsetter /

Fig.8: - Low beam; H7;





Important:

- Ensure correct battery voltage, connect charger if necessary (Fig.10).

Fig.11





Important:

- Perform visual inspection and technical check of headlamp.

Recommendation:

Beamsetter IV -- analog --

Important safety note

Technical information and practical tips have been compiled by HELLA in order to provide professional support to vehicle workshops in their day-to-day work. The information provided on this website is intended for use by suitably qualified personnel only.