



Mazda CX5 (KE) - Check electromechanical parking brake

Data sheet	
Manufacturer	Mazda
Vehicle model	CX5 (KE)
Year of manufacture	2011 - 2017
Symptoms	Check electromechanical parking brake on brake test stand

Important safety note

Technical information and practical tips have been compiled by HELLA in order to provide professional support to vehicle workshops in their day-to-day work. The information provided on this website is intended for use by suitably qualified personnel only.

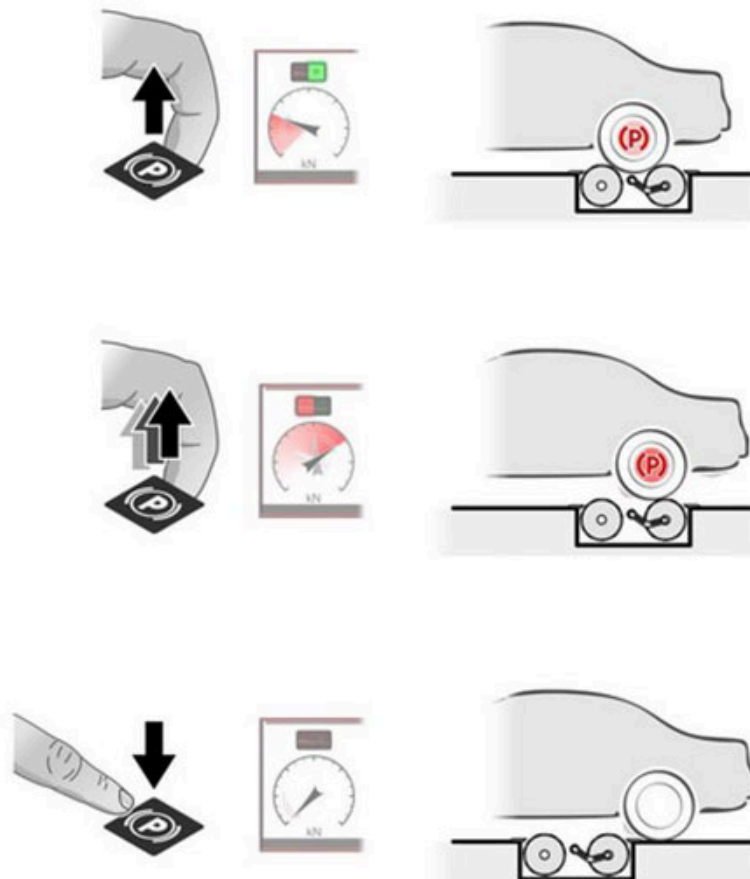
This is how you check the electromechanical parking brake on the brake test stand for a Mazda CX5 (KE)

Vehicles equipped with an electromechanical parking brake can be tested on a chassis dynamometer as follows.

- Prepare and switch on the brake test stand in accordance with the manufacturer's instructions
- Drive the vehicle with the rear wheels onto the brake test stand
- Shift the gear selector lever to "neutral position".
- The chassis dynamometer starts automatically. Front wheel speed: 0 km/h. Rear wheel speed 3 to 6 km/h.
- The control unit of the electromechanical parking brake detects the situation and automatically activates the test mode.

- During the test, the electromechanical parking brake indicator lamp lights up on the instrument cluster.
- Then press (pull) the button for the electromechanical parking brake several times in succession. With each actuation, the braking force is increased at the wheel brake.
- When the maximum braking force is reached, the drive rollers on the test stand switch off and the measurement results can be read on the displays.
- To release the parking brake, actuate (press) the switch again.

Note: The accelerator and brake pedals must not be operated during the test on the test stand



Repair notes

The procedure is identical for vehicles with all-wheel drive. Repair and maintenance work on the brake system should only be carried out by a trained specialist in the automotive trade! Please always observe the maintenance and repair notes provided by the vehicle manufacturer in this context



Reprinting, distribution, reproduction, exploitation in any form or disclosure of the contents of this document, even in part, is prohibited without our express, written approval; indication of the document source is also required. The schematic illustrations, pictures and descriptions serve only for the purposes of explanation and representation of the instructions and cannot be used as a basis for installation or assembly work. All rights reserved