



FEATURE PRODUCTS
HEAVY VEHICLE INDUSTRY



BUILT TO LAST

UNIVERSAL LIGHTING BY HELLA

Light is essential for both seeing and being seen. This is crucial for the heavy vehicle sector where professional drivers and vehicles travel long distances day and night. Rely on HELLA quality lighting for productivity while keeping vehicle operators and road users safe.

For over 125 years HELLA has been developing innovative lighting systems that provide optimal illumination, offering a higher level of driving comfort, increased productivity, reliability and safety.

With a comprehensive range of LED front, side and rear signal and marker lamps, driving lamps, work lamps and accessories HELLA products have been tried, tested and proven in the Australian and New Zealand road transport sector for over three decades.

HELLA products are manufactured using high quality, corrosion resistant materials that have been tested and proven to be ultra-durable in extreme environments and harsh conditions - that's why HELLA is the right partner for you.

In this brochure is a selection of universal lighting products designed for the heavy vehicle sector. For the complete product portfolio visit hella.com/australiansolutions





HELLA New Zealand - Manufacturing products for Australia since 1973

With a reputation for innovation and an uncompromising approach to quality, HELLA New Zealand is regarded as a manufacturing centre of excellence within the global HELLA group.

Established in 1973, HELLA New Zealand began developing and manufacturing high quality, robust LED vehicle lighting products to meet the unique requirements and challenges of end users in Australia and New Zealand. A strong partnership soon formed between HELLA's Australian and New Zealand operations, and for almost 50 years many joint projects that began by creating new and innovative solutions to the challenges of their local markets have resulted in products that have gone on to achieve global success.

Technology Leaders

HELLA New Zealand was one of the pioneers of LED lighting, with its research and development recognising the enormous advantages of LED technology for commercial vehicle, mining and marine lighting applications in the early 1990s. Over the last two decades, some of HELLA's most innovative LED lighting products have originated from HELLA New Zealand's design and manufacturing plant in Auckland and its electronics assembly plant in Waihi.

Today, HELLA New Zealand has world-class expertise in LED lighting technology. Its dedicated in-house electronic and optical design engineers develop innovative products with smart electronics that provide enhanced features, class-leading reliability and energy efficiency. High quality, corrosion resistant materials that stand the test of time are used for chassis, lenses and mounts to achieve high levels of impact resistance and durability, such as optical nylon, which is far stronger than conventional plastics.

The Auckland facilities cover some 7500m² and boast state of the art, highly automated manufacturing capabilities. The Waihi electronics plant, purpose built in 2007, boasts the latest automated, high precision assembly systems that place 70,000 LEDs onto circuit boards each day. Huge investment has been made in state of the art, computer-controlled moulding machines that enable extremely precise moulding tolerances to be achieved, down to as little as plus or minus .02mm.

In accordance with HELLA's commitment to environmental sustainability, the Auckland factory uses 100 per cent renewable energy and 95 per cent of waste material generated during the moulding process gets recycled into packing trays and glue tubes, and for purging machines between different types of plastics.

Fit and Forget - by Design

HELLA New Zealand's fit and forget – by design philosophy reduces ownership costs for fleets with maintenance-free lighting solutions, such as the DuraLED® series of LED marker and signal lamps which provide maximum visibility and an unrivalled service life that's supported by an industry-leading lifetime warranty.

Originally conceived in 1996 and trialled for the very first time in 1998, DuraLED® marker and signal lamps revolutionised the market by eliminating vehicle downtime as a result of globe failures, dust or water ingress, or damage caused by debris and, in doing so, reducing costs for fleet operators.

Ongoing product upgrades, including design changes, the introduction of Grilamid® lenses for improved impact-resistance and the latest electronics, have enabled DuraLED® to remain at the forefront of the market.

Quality Assured

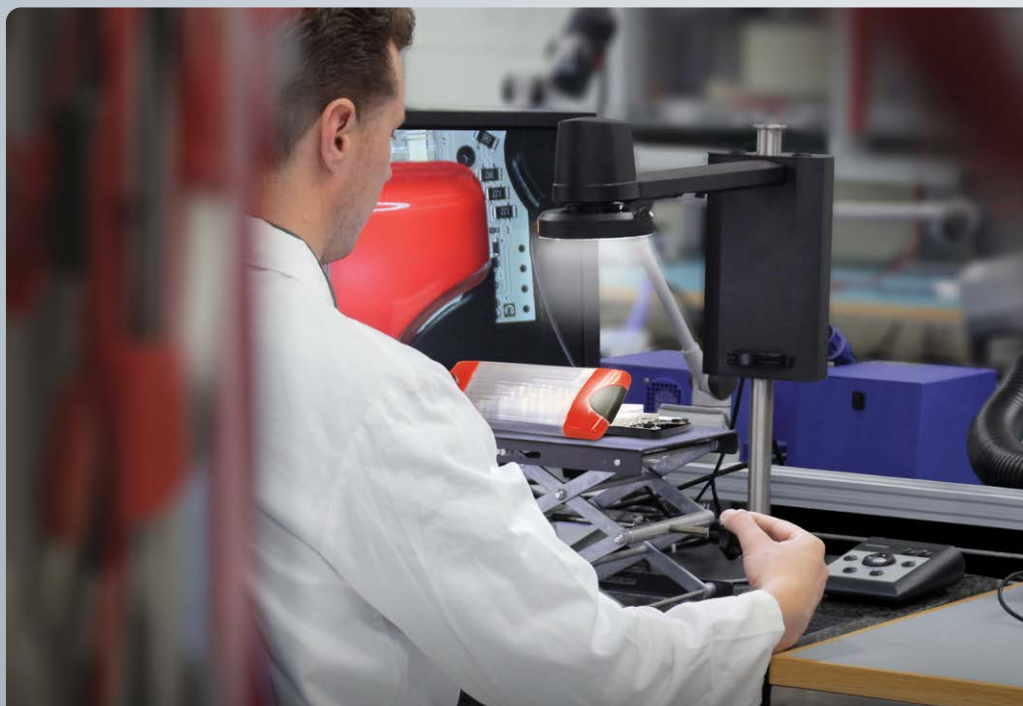
Every product that leaves HELLA New Zealand's facilities is individually tested, and every order line is QA inspected. On-site testing facilities subject products to extremes of temperature, intense UV light, exposure to chemicals, and in humid and salt-laden conditions to ensure that they perform under stresses that greatly exceed those of most real-world situations.

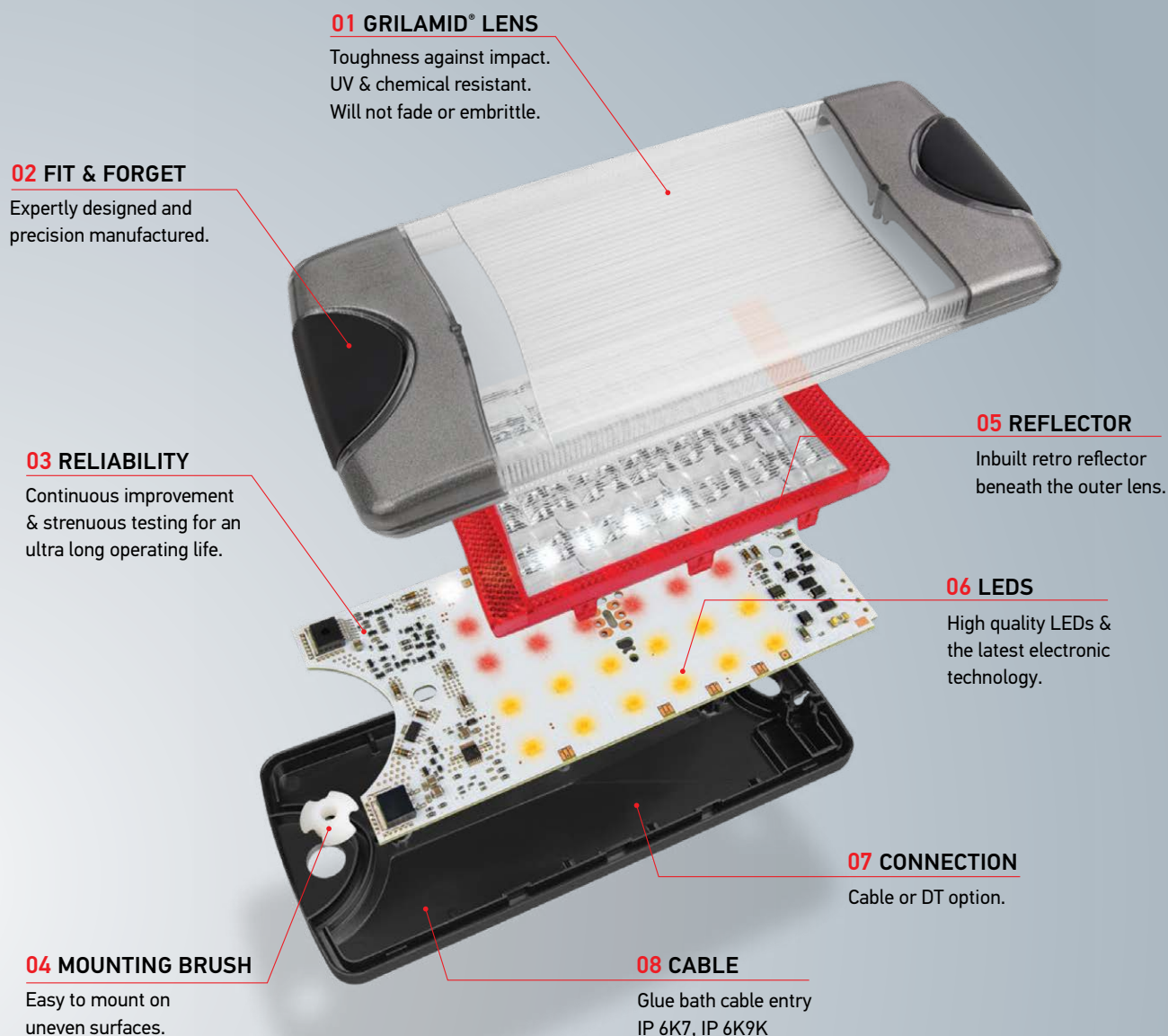
A Lifetime of Service

With over 25 years of strenuous testing, continuous improvement and proven reliability in use on the roads of Australia and New Zealand, HELLA Australia is proud to stand by the unique DuraLED® lifetime warranty*, which warrants every DuraLED® product to last the economic life of the vehicle they were first installed on.

However, in the unlikely event that you should experience a confirmed warranty-related problem with DuraLED®, our commitment to your satisfaction ensures that HELLA will either repair or replace the product or refund the purchase price.

*This warranty does not cover claim/s as a result of normal wear and tear, any modifications, alterations, non-compliance of assembly, service and operating instructions and/or any unfit or improper use. Repair, replacement or refund is at HELLA's sole discretion.





DURALED® **BUILT TO LAST**

HELLA's growing range of DuraLED® lamps, incorporating the latest LED technology, have proven to be the superior economic and environmental choice for transport operators in Australia. DuraLED® has a track record to last the distance. The first DuraLED® lamps were supplied in 1998, some 20 years ago and are still in use today.

Fully sealed against dust and moisture to International Protection Standards IP 6K6/IP 6K7, and compliant with current ADR (Australian Design Rules). As a result, these lamps are approved for use in Australia and New Zealand.

Once again following market demand, we now offer a range of selected models of DuraLED® lamps with moulded-in-Deutsch (DT) Connectors.

HELLA's innovative DuraLED® lamps are designed for use on trucks, buses, caravans, emergency vehicles and speciality applications.

DuraLED[®] SIGNAL LAMPS



DuraLED Base
Clear when Inactive
Tail and stop lamp
2SB 017 007-201



DuraLED-S Rear Lamps
Tail and stop lamp
2SB 017 007-001 (Old 2330)



Rear direction indicator lamp
2BA 017 006-201



Rear direction indicator lamp
2BA 017 006-001 (Old 2151)



Reverse lamp
2ZR 017 008-201



Reverse lamp
2ZR 017 008-001 (Old 1430-H)

COMBINATION LAMPS



DuraLED[®] Combi-SR Stop/
Rear Position/Rear Direction
Indicator/Reversing Lamp
with Retro Reflector
2VP 015 074-001
2VP 015 075-101 DT & HCS
2VP 015 074-101 HCS



DuraLED Prime
Glowing Tail and Stop Lamp
2SB 350 300-051 (harness 2.5m)
2SB 350 300-061 (DT connector)



DuraLED[®] Combi-S
Stop/Rear Position/Rear
Direction Indicator Lamp
2SD 980 613-001 (2378)
2SD 980 602-001 (2378-DT)
2SD 980 602-001 (2378-DTCS)
HCS Version

Glowing Tail and Rear Direction Indicator
2BA 350 300-011 (swiping, harness 2.5m)
2BA 350 300-021 (swiping, DT connector)
2BA 350 300-031 (flashing, harness 2.5m)
2BA 350 300-041 (flashing, DT connector)



DuraLED[®] Combi-R Stop/
Rear Position/Rear Direction
Indicator Lamp with Retro
Reflector
2VA 980 710-011 (2377)

Glowing Tail and Reverse Lamp
2ZR 350 300-071 (harness 2.5m)
2ZR 350 300-081 (DT connector)



DuraLED® MARKER LAMPS



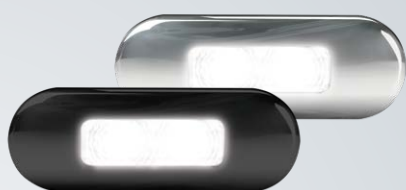
DuraLED® Flush Mount
Side Marker Lamp
2PS 980 868-041 (2083)
2PS 980 868-061 (2083S) S/S Rim



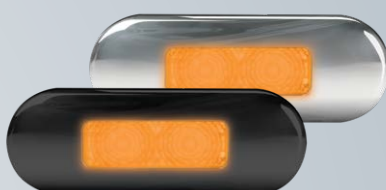
DuraLED® Flush Mount Supplementary
Side Direction Indicator Lamp (Cat 5.)
2BM 980 868-301 (2086)
2BM 980 868-321 (2086S) S/S Rim



DuraLED® Flush Mount
Rear Position/End Outline Lamp
2XA 980 855-301 (2310)
2PF 980 855-311 (2310S) S/S Rim



DuraLED® Flush Mount
Front Position/End Outline Lamp
2PF 980 855-011 (2059)
2PF 980 855-021 (2059S) S/S Rim



DuraLED® Flush Mount
Front End Outline Lamp
2PF 980 855-201 (2060)
2PF 980 855-211 (2060S) S/S Rim



DuraLED Flush Mount
Side Marker Amber SM1 ECE
2PS 980 868-207 (MOQ 24)



DuraLED® Side Marker Lamp
with Chrome housing
2PS 959 660-691 (2053CHROME)



DuraLED® Side Marker Lamp
with Black housing
2PS 959 660-581 (2053)



DuraLED® Front Position/
End Outline Lamp
2PF 959 570-491 (2054)



DuraLED® Front End
Outline Lamp
2PF 959 570-301 (2051)



DuraLED® Rear Position/
End Outline Lamp
2BA 959 560-431 (2307)



DuraLED® Cab Marker/
Supplementary Side Direction
Indicator Lamp (Cat. 5)
2BP 959 660-301 (2026)



LED Number Plate Lamp
2KA 959 640-301 (2559-1)



Rubber Arm Side Marker
2XS 011 768-117 (Short Straight Arm with DT plug)
2XS 011 744-031 (LHS 45deg Arm with 3m lead)
2XS 011 744-041 (RHS 45deg Arm with 3m Lead)

DuraLED® MARKER LAMPS



DuraLED® Heavy Duty Side Marker Lamp with DT Connector - Red/Amber
2073CHROME



DuraLED® Heavy Duty Cab Marker/Supplementary Side Direction Indicator Lamp
2BP 980 660-101 (2027) Matt finish
2BP 980 660-121 (2027P) Polished finish



DuraLED® Heavy Duty Cab Marker/Supplementary Side Direction Indicator Lamp with DT Connector
2BP 980 990-101 (2076)



DuraLED® Heavy Duty Front End Outline Lamp
2PF 980 660-301 (2062) Matt finish
2PF 980 660-321 (2062P) Polished finish



DuraLED® Heavy Duty Front End Outline Lamp with DT Connector
2PF 980 990-401 (2071)



DuraLED® Heavy Duty Side Marker Lamp - Red/Amber
2PS 980 660-001 (2058) Matt finish
2PS 980 660-021 (2058P) Polished finish



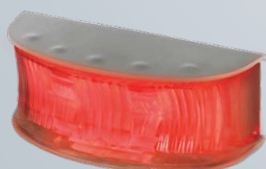
DuraLED® Heavy Duty Side Marker Lamp with DT Connector - Red/Amber
2PS 980 990-001 (2073)



DuraLED® Heavy Duty Front Position/End Outline Lamp
2PF 980 660-201 (2061) Matt finish
2PF 980 660-221 (2061P) Polished finish



DuraLED® Heavy Duty Front Position/End Outline Lamp with DT Connector
2PF 980 990-201 (2074)



DuraLED® Heavy Duty Rear Position/End Outline Lamp
2XS 980 660-401 (2311) Matt finish
2XS 980 660-421 (2311P) Polished finish



DuraLED® Heavy Duty Rear Position/End Outline Lamp with DT Connector
2XA 980 990-601 (2312)



DuraLED DT series has integrated DT connector molded into the base

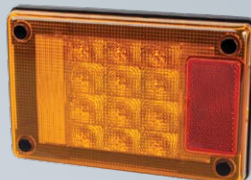
JUMBO-S SERIES SIGNAL LAMPS



The Jumbo-S Series is HELLA Australia's premium Jumbo Combination series fitted by leading Truck and Trailer manufacturers.



Jumbo-S LED Stop/
Rear Position Lamp
2TA 980 760-011 (2361)



Jumbo-S LED Rear
Direction Indicator Lamp
2BR 980 761-011 (2161)



Jumbo-S LED
Reversing Lamp
2ZR 980 762-011 (1461)



Jumbo-S Stop/ Rear Position/Rear
Direction Indicator Lamp - HCS
Technology
2VA 980 761-801 (2429-CS) HCS
2VA 980 760-801 (2429)



Jumbo-S Stop/Rear Position/Rear Direction
Indicator Lamp - HCS Technology
2VA 980 761-811 (2430-CS) HCS
2VA 980 760-811 (2430)



Jumbo-S Stop/Rear Position/Rear Direction
Indicator/Reversing Lamp - HCS Technology
2VP 980 761-821 (2431-CS) HCS
2VP 980 760-821 (2431)

SIX FUNCTION LED COMBINATION LAMP



Compact full-LED rear lamp 328 630
Rear lamp with 6 light functions in
100% LED technology
2VP 328 630-011 Horizontal
2VP 328 630-021 Vertical



LED Stop/Rear Position/Rear Direction Indicator/Reversing Lamp
with Retro Reflector and Number Plate Function
2VD 980 980-011 (2392L) LHS with Licence plate lamp
2VD 980 980-021 (2392R) RHS with Licence plate lamp
2VP 980 980-001 (2391)

ANTARES DRIVING LIGHTS



SAFETY & VISIBILITY DAY & NIGHT

- Daytime Running Lamps provide visibility during daylight to alert oncoming traffic
- Unique look position lamps increase visibility in urban environments

TOUGH DRL INTEGRATED COVERS

- Provides stylish protection against sand, dust, mud and bugs.
- Includes distinctive Antares edgelight design

COVER DETECTION

- Switches off main beam when cover applied for greater operating efficiency

SELECTABLE OUTPUT MODES

- Easily adjust between high and low output for optimal driver comfort (9-inch)

DIECAST ALUMINUM HOUSING & BRACKET

- Durable, lightweight and corrosion resistant
- Mounting holes for maximum stability

COMPOSITE LIGHTING DESIGN (9 inch)

- Projector spot beams for long distance visibility
- Diamond glow position lamp with unique umbrella reflector technology
- Wide beam 10W LED clusters for even wider light dispersal



TOUGH CONSTRUCTION

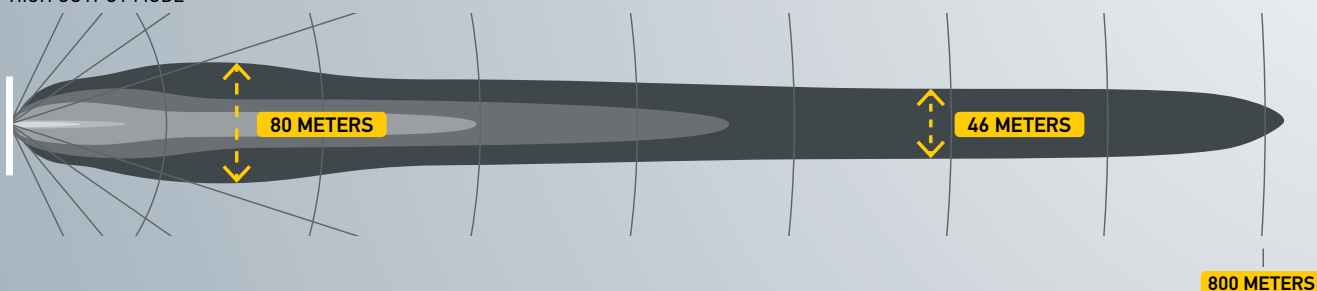
- IP69K dust & waterproof, suits harsh Australian conditions
- Hard-coated UV stable polycarbonate lens

PLUG & PLAY WIRING HARNESS

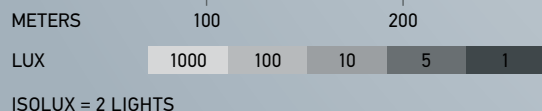
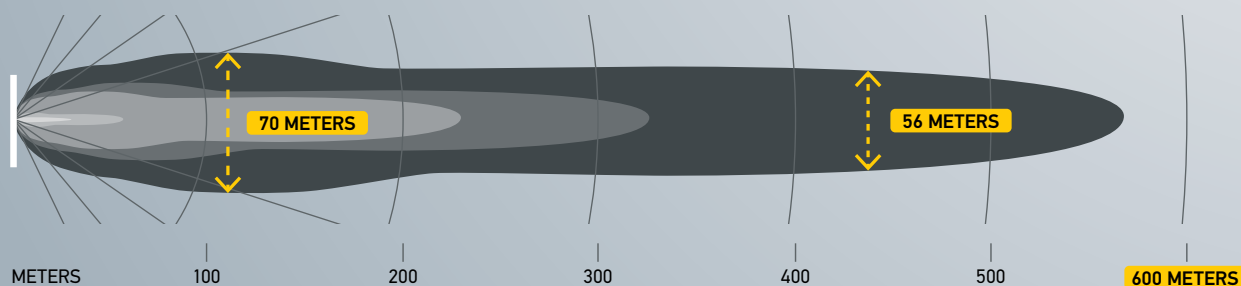
- With H4 & HB3 adaptors for easy DIY install

9 INCH

HIGH OUTPUT MODE



7 INCH



ANTARES

9" & 7" DRIVING LIGHTS

Compliance
ADR
COMPLIANCE

Power Supply
**MULTI
VOLT™**

Warranty
5YR
WARRANTY



Antares 9 inch
1F0 358 228-871



Antares 7 inch
1F7 358 228-861

BLACK MAGIC TOUGH

Power Supply
**MULTI
VOLT™**

Warranty
5YR
WARRANTY

Tough on every kind of road, and even when you're off the beaten track.

Black Magic Tough lightbars are available in a range of sizes to suit your needs, from the MASSIVE 52 inch double to the 21.5 inch.

So, you only have limited space left on your truck or off-roader? Not a problem! Just choose our 7-inch and 13-inch variants.

Whether you use just one or several, Tough is the right choice for every situation.

Mini Lightbar

1FJ 358 196-451 7" Mini Lightbar, Double Straight

1FJ 358 196-461 13" Mini Lightbar, Double Straight

Double Row Lightbar

1GJ 358 197-401 21.5" Double Row Lightbar, Double Straight

1GJ 358 197-411 30" Double Row Lightbar, Double Straight

1GJ 358 197-421 40" Double Row Lightbar, Double Straight

1GJ 358 197-441 52" Double Row Lightbar, Double Straight

Brackets

8HG 358 176-381 Brackets Black Magic double row, 2 pieces, Double



7" ROUND LED HEADLAMPS



High/Low Beam and Daytime
Running Lamp/Front Position
1L6 958 307-011 (1058LED)



High Beam
1L6 958 307-021 (1358LED)

90MM PERFORMANCE HEADLAMP L4060 SERIES



The L4060 series feature a striking visual design with ring-shaped, homogenous daytime running lights using HELLA CELIS ring technology, position lights and indicator lights.

The die-cast aluminum housing with integrated electronics and polycarbonate cover lens makes the L4060 series extremely robust and resistant to impacts from road debris.



High Beam
1F0 011 988-121



High Beam/Daytime
Running Lamp/Position
1F0 011 988-131



High Beam/
Direction Indicator
1F0 011 988-171

90MM ESSENTIAL HEADLAMP R 80 SERIES



The Essential Series R 80 headlamp modules provide quality HELLA OE LED lighting technology in a cost effective, compact and robust product.

With an innovative reflector based optical design, the R 80 series produces a well controlled, homogeneous distribution of light.

A robust aluminium housing and polycarbonate lens construction makes the R 80 series an ideal upgrade for older halogen headlights offering a long, maintenance-free service life and reduced operating costs.



Fog lamp R 80
1N0 017 050-001

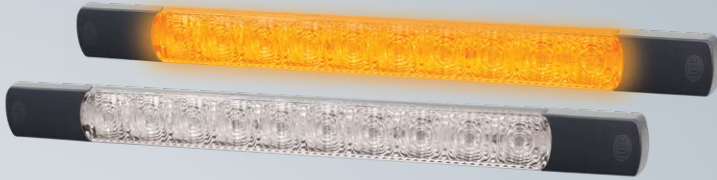


Low Beam R 80
1M0 015 050-011



High Beam R 80
1K0 015 050-021

FRONT POSITION, INDICATOR AND DRL



Front direction indicator

LED Front Direction Indicator Lamp - Surface Mount
2BA 980 888-301 (2109) Horizontal Mount - 12V
2BA 980 888-501 (2109V) Vertical Mount- 12V
2BA 980 888-401 (2109-24V) Horizontal mount - 24V
2BA 980 888-601 (2109V-24V) Vertical Mount- 24V



Combination lamp -
front position with direction indicator function

LED Slim Combination Lamp - Surface Mount
2BE 980 819-301 (2110-12V) 12V
2BE 980 819-401 (2110-24V) 24V



Daytime Running Lamps
5619 (12V Horizontal Kit)
5619-24V (24V Horizontal Kit)
5619V (12V Vertical Kit)
5619V-24V (24V Vertical Kit)



LED combination lamp slimline
2BE 016 545-001
 Front direction indicator



LED combination lamp CirLED
2BE 016 540-011
 PO and DRL



Daytime running lamp
2PT 009 496-802 (5608)



LED WORK LAMPS

WHEN SAFETY & PRODUCTIVITY ARE A PRIORITY

Power Supply
**MULTI
VOLT**

Warranty
**5YR
WARRANTY**



Module 70 S Series

1G0 996 776-001 (1000lm) Close Range

1G0 996 776-201 (1850lm) Close Range



Power Beam S Series

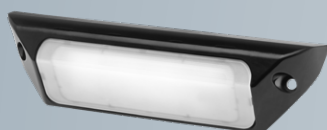
1GA 996 588-001 (1000lm) Close Range

1GA 996 588-201 (1850lm) Close Range



R120S LED Work Lamp

1G2 996 220-001 Close Range



FMS Base (1200 Lumen)

1GB 996 098-001

FMS Prime (2500 Lumen)

1GB 996 098-011



FMS Base WHITE housing (1200lm)

1GB 996 098-501

FMS Prime WHITE housing (2500lm)

1GB 996 098-511



RokLUME 155TP LED Work Lamp

1GA 996 284-051 Close Range

1GA 996 284-061 Long Range



**ADR
COMPLIANT
REVERSE**

Q90 Compact LED

Reversing Lamp

2ZR 996 284-511 (1563LED-RE)



**ADR
COMPLIANT
REVERSE**

Power Beam S-series

Reverse lamp

2ZR 996 588-501



**ADR
COMPLIANT
REVERSE**

Module 70 LED Gen

3.2 reverse lamp

2ZR 996 576-501



BM-SERIES REVERSE ALARMS



HELLA's BM Series reversing alarms come packed with our legendary OE quality robustness and reliability. This includes testing to validate the product under conditions such as , low and high temperature, vibration, corrosion, high pressure hot water, dust ingress, sound pressure level and frequency testing.



BM10

3SL 009 148-171 (97DB(A) Tonal noise)
6009 (97DB(A) Tonal noise)
3SL 009 148-201 (107DB(A) Tonal noise)



BM20

3SL 996 139-501 (6051) 92DB(A) White Noise
3SL 996 139-511 (6052) 97DB(A) White Noise
3SL 996 139-521 102DB(A) White Noise
3SL 996 139-531 92-102DB(A), Self Adjusting, White Noise



BM30

6016 (107DB(A) Tonal noise)
6017 (112DB(A) Tonal noise)
6018 (87-112DB(A) Smart self adjusting)



BM40

3SL 996 139-551 (6049) 97, 102 or 112DB(A), Switchable, Tonal
3SL 996 139-561 97, 102 OR 112DB(A), Switchable, White Noise
3SL 996 139-571 (6048) 97-112DB(A), Self Adjusting Tonal
3SL 996 139-581 92-107DB(A), Self Adjusting White Noise

EPOXY ENCAPSULATED ELECTRONICS

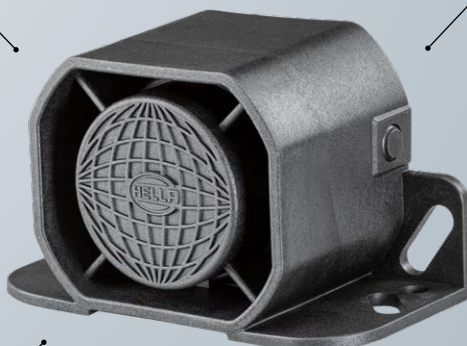
Long service life, resists water and vibration. ECE R10 compliance guarantees radiated emissions do not interfere with radio comms and other RF sensitive devices.

FLEXIBLE MOUNTING OPTIONS

Compact versions (BM10, BM20) for maximum performance in a small size, larger (BM30, BM40) footprints available for heavy duty environments.

DT TYPE CONNECTIONS

Quick fit Industry standard waterproof connections stay reliable for a long time.



WHITE NOISE OUTPUT

White noise models best for urban environments to reduce noise pollution and community disturbance.

TONAL NOISE OUTPUT

Tonal noise models are best for attracting attention in noisy industrial environments where maximum audibility is required.

SMART NOISE LEVEL ADJUSTMENTS

Models with smart noise output adjustment reduce noise pollution while maximizing audibility by auto adjusting sound output based on ambient noise level.

* NOTE - BM30 pictured, features & functionality varies according to model.

LED WARNING BEACONS & FLASHERS

ENSURE AWARENESS FOR A SAFE WORKING ENVIRONMENT



RotaLED LED Beacon
2RL 010 979-001 (1611) Fixed Mount - Amber
2RL 010 979-021 (1613) Magnetic Mount - Amber



RotaLED Compact Beacon (SAE Class 1)
2RL 014 979-041 Fixed Mount - Amber

RotaLED Compact Beacon (SAE Class 1)
2RL 014 979-051 Pipe Mount - Amber



KL7000LED LED Beacon
2RL 011 484-001 (1608) Fixed Mount - Amber
2RL 011 484-021 (1610) Magnetic Mount - Amber



BST Slim
2XD 014 563-401 3 LED - Amber
2XD 014 562-401 6 LED - Amber



K-LED® Rebelution
2RL 455 256-001 Fixed Mount - Rotating
2RL 455 256-011 Flexible Pipe Mount - Rotating
2RL 455 256-021 Magnet Mount - Rotating



K-LED® Nano
2XD 066 146-001 PC LED-Beacon K-LED Nano Fix Mount
2XD 066 146-011 PC LED-Beacon K-LED Nano Flex Pipe Mount



K-LED® 2.0
2XD 011 557-001 (HM9600ADIR)

MINI & MODULAR LIGHT BARS

LIGHT BAR



Micro Light Bar

2RL 014 566-111 Fixed Bracket Mount - Clear
 2RL 014 566-311 Fixed Bracket Mount - Amber
 2RL 014 566-101 Fixed Mount - Clear
 2RL 014 566-301 Fixed Mount - Amber



Mini Light Bar

2RL 014 565-111 Fixed Bracket Mount - Clear
 2RL 014 565-311 Fixed Bracket Mount - Amber
 2RL 014 565-101 Fixed Mount - Clear
 2RL 014 565-301 Fixed Mount - Amber

HELLA Modular Light Bars offer a number of programmable functions. At just 52mm high, they can either be screwed directly onto the vehicle roof or mounted using the included bracket. The standard base of the Modular Light Bar is controlled with a simple ON/OFF switch, with 4000mm lead for easy installation. Spare parts are available on request.

2RL 014 567-101



Modular Light Bar

2RL 014 567-101 1524 mm (60")
 2RL 014 567-121 1828 mm (72")

2RL 014 567-121



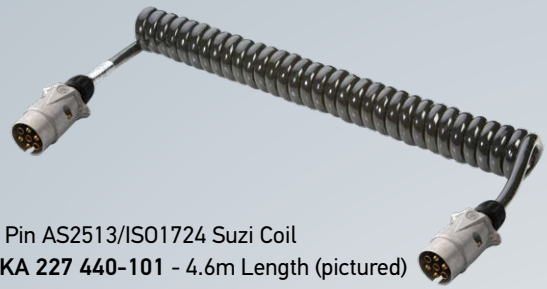
Scan to view our products



HEAVY DUTY TRAILER CONNECTORS



7 Pin ABS/EBS Multi-Voltage Suzi Coil
8KA 227 440-081 - 4.5m Length (pictured)
8KA 227 440-181 - 5.2m Length, Long Tail



7 Pin AS2513/ISO1724 Suzi Coil
8KA 227 440-101 - 4.6m Length (pictured)
8KA 227 440-111 - 5.6m Length, Long Tail



15 Pin and 7 Pin ABS/EBS Suzi Coil
8KA 227 440-061 - 24V - 4.5m Length
8KA 227 440-051 - 12V - 4.5m Length
8KA 007 648-041 - 15 Pin - 4.5m Length



7 Pin SAE J560 to AS2513 Adaptor Suzi Coil
8KA 227 440-141 - 4.6m Length (Pictured)
8KA 227 440-151 - 5.6m Length, Long Tail



15 Pin and 7 Pin Plugs and Sockets
 ABS/EBS Screw Terminals
8JB 227 440-011 - ISO7638-2 12V Socket
8JB 227 440-021 - ISO 7638-1 24V Socket
8JA 227 440-031 - ISO7638-2 12V Plug
8JA 227 440-041 - ISO7638-1 24V Plug
8HG 227 440-001 - Blank Park Socket
8JB 007 242-011 - 15P/24V EBS Socket
8JA 007 241-021 - 15P /24V EBS Plug



Plug and Socket Testers
8PD 004 508-031 - 7 Pin Socket Tester EBS 24V (Pictured Left)
8PD 004 508-011 - 7 Pin Socket Tester, ISO 1185 / SAE J560 (Pictured Right)



7 Pin SAE J560 Suzi Coil,
 Overmoulded waterproof plugs
8KA 905 392-041 - 4.5m Length
8KA 905 392-211 - Long tail



7 Pin Waterproof Socket, Crimp Terminals
8JB 905 392-051 - SAE J560 Socket



7 Pin Waterproof Socket, Crimp Terminals
8JB 910 032-041 - ISO 1724 Socket

LED LAMP DISTRIBUTION BOX



Looking for a simple and reliable way to connect lighting to your trailer harness? HELLA's revolutionary LED Lamp Distribution Module is the quick connect, easy trouble shooting solution for fitting lamps to heavy trailers and custom vehicles.

8JE 233 496-001

WATERPROOF CONNECTIONS

Rated IP6K7 and IP6K9K

OVERLOAD PROTECTED

Internal electronics protect and isolate individual circuit outputs reducing lamp outages as well as increasing the life of the lamps

TIME SAVING

With no requirement to splice cables, this significantly reduces build time making trouble shooting easier if an outage occurs

FULLY SEALED INTERNALS

Completely sealed internals provides protection against water, dust and high pressure cleaning

TOUGH ABS PLASTIC CONSTRUCTION

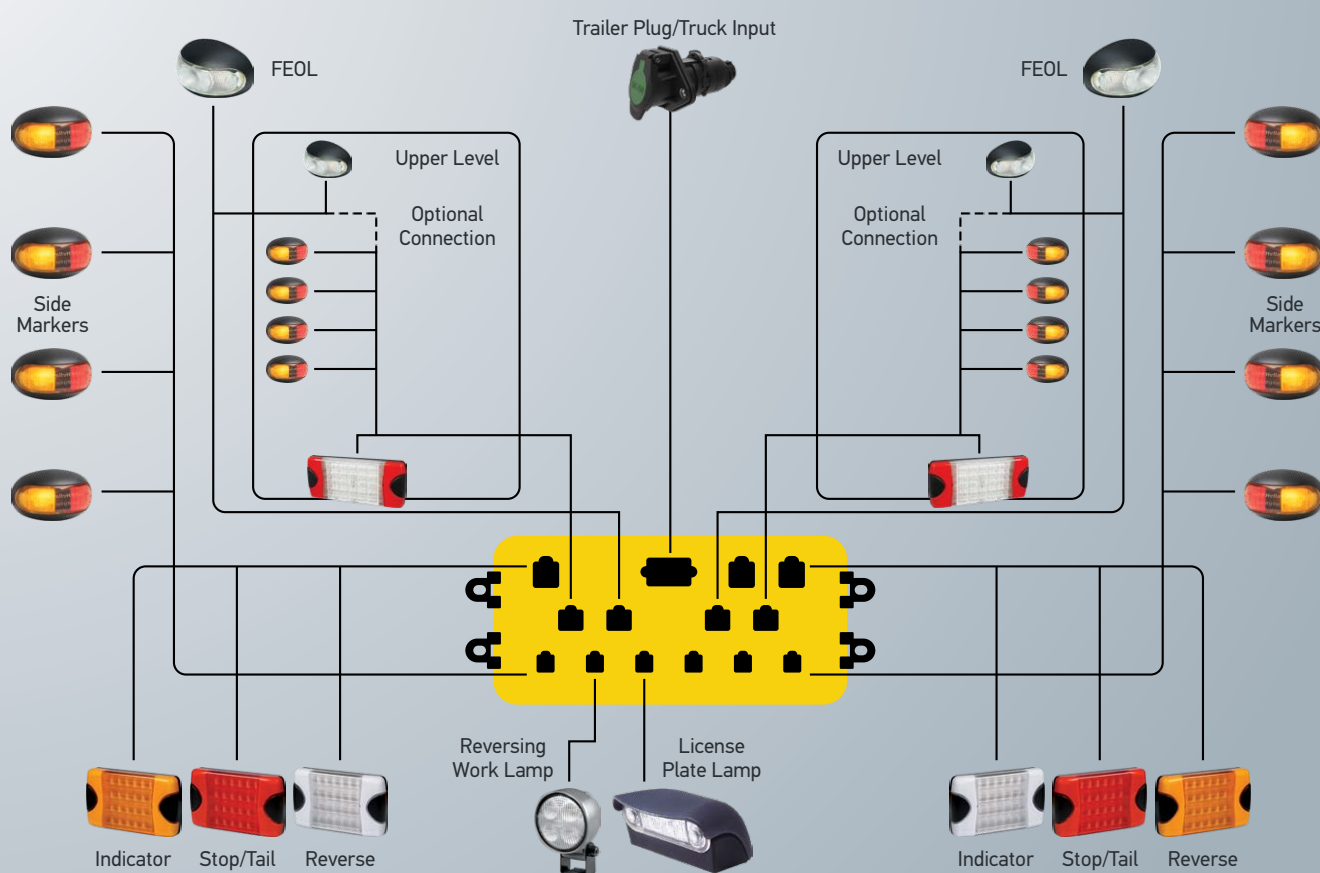
A tensile strength polymer that is impact resistant, tough and corrosive resistant

PLUG & PLAY

Quick connecting, easy trouble shooting solution for LED lamps to trailers and customer vehicles



Wiring Example



HELLA Australia Pty. Ltd.

4 Hargrave Place

P.O. Box 89

Mentone, Victoria,

3194 Australia

Techline: 1800 061 729

info.au.hella@forvia.com

hellaorders.hella@forvia.com

Find us at:

facebook.com/hella.australia

youtube.com/hellaaus

instagram.com/hella.australia

© 2025 HELLA Australia Pty Ltd

hella.com/australiansolutions/



DURALED® SUPERIOR LED LIGHTING

OVER 25 YEARS OF PROVEN RELIABILITY
IN THE TOUGHEST CONDITIONS