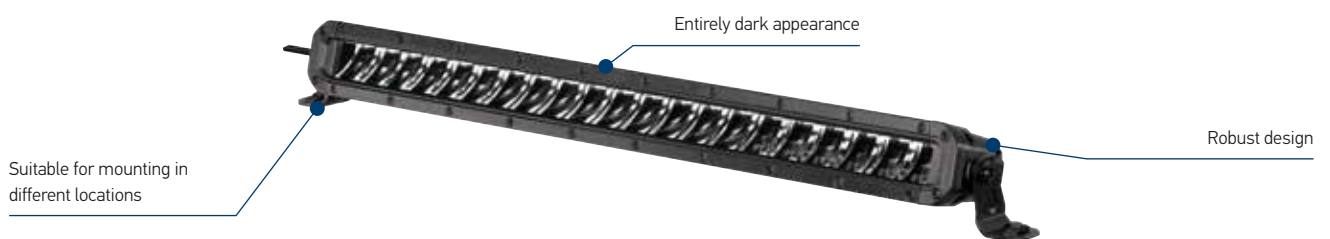


BRIEF INFORMATION

Black Magic ECE Light Bars

- Typical Black Magic appearance including black holders
- Robust design and durable material
- Powerful light output thanks to modern reflector system and very strong LEDs in all 14 ECE-approved variants!
- First “curved” variants in the range with approval for use on the road

PRODUCT FEATURES

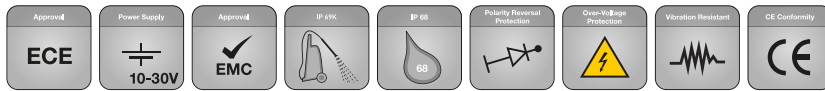


The HELLA Black Magic ECE Light Bars provide a high beam with a very powerful light output of up to 9,200 effective lumens, ideal for off-road situations where you need it most and for trucks that need really good light. Both the Slim and Double Light Bars are easily recognisable with their attractive and robust look in an all-black design.

They are typically mounted on the roof or roof bar, the radiator grille or bumper.

The product complies with the highest dust/water resistance class. The extra-long two-metre cable makes it easy to attach it to your vehicle.

TECHNICAL DETAILS

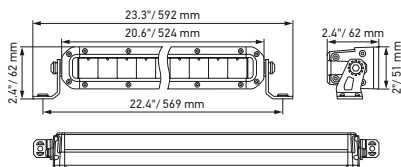


Technical data

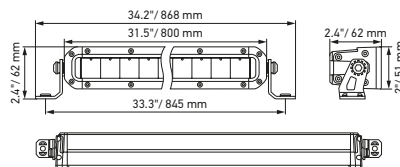
Version	Slim Lightbar		
	20"	32"	40"
Part number	1FJ 358 196-301	1FJ 358 196-311	1FJ 358 196-321
Rated voltage	Multi-voltage		
Operating voltage	10–30 V		
Current consumption	3.68 A (12 V) 1.9 A (24 V)	5.83 A (12 V) 2.97 A (24 V)	7.6 A (12 V) 3.87 A (24 V)
Max. power consumption	51 W	79 W	102 W
Light function	High beam (ECE-R149)		
Light source	LED		
Colour temperature	5,700 kelvin		
Material	Aluminium, black stainless steel holder		
Weight	2,450 g	3,300 g	4,000 g
Protection class	IP 68, IP 69K		
EMC protection	ECE-R10		
Mounting	Upright/pendant		
Connection	2,000 mm cable with open ends		
Mounting type	Screw attachment		
ECE ref. no.	50		
Number of LEDs	21	33	42
Light output (effective)	3910 lm	5410 lm	6815 lm
Application	1) For public roads: lorries, cars, SUVs (please observe the applicable legal regulations) 2) For vehicles used off road, such as all-terrain vehicles, pick-ups, trucks, buggies, quads		

Dimensional sketch

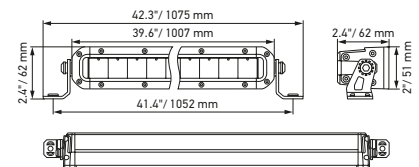
Black Magic 20" Slim Lightbar



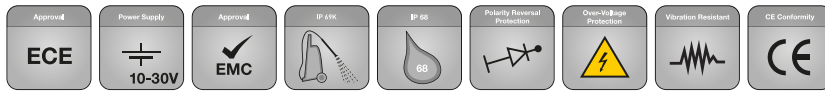
Black Magic 32" Slim Lightbar



Black Magic 40" Slim Lightbar



TECHNICAL DETAILS

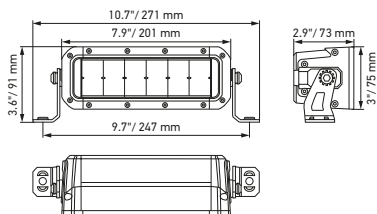


Technical data

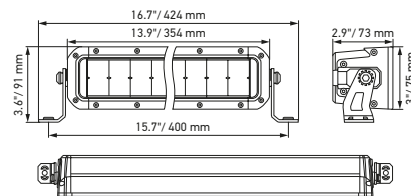
Version	Double Row Mini Lightbar		Double Row Lightbar		
	7"	13"	21.5"	30"	40"
Part number	1FJ 358 196-451	1FJ 358 196-461	1FJ 358 196-401	1FJ 358 196-411	1FJ 358 196-421
Rated voltage	Multi-voltage				
Operating voltage	10–30 V				
Current consumption	1.97 A (12 V) 1.04 A (24 V)	4.01 A (12 V) 2.05 A (24 V)	6.8 A (12 V) 3.48 A (24 V)	10.07 A (12 V) 5.1 A (24 V)	14.36 A (12 V) 6.91 A (24 V)
Max. power consumption	28 W	55 W	92 W	135 W	185 W
Light function	High beam (ECE-R149)				
Light source	LED				
Colour temperature	5,700 kelvin				
Material	Aluminium, black stainless steel holder				
Weight	1,700 g	2,150 g	3,200 g	4,500 g	5,500 g
Protection class	IP 68, IP 69K				
EMC protection	ECE-R10				
Mounting	Upright/pendant				
Connection	2,000 mm cable with open ends				
Mounting type	Screw attachment				
ECE ref. no.	30	40	45	45	50
Number of LEDs	12	24	40	60	80
Light output (effective)	2100 lm	3800 lm	5500 lm	7900 lm	9720 lm
Application	1) For public roads: lorries, cars, SUVs (please observe the applicable legal regulations) 2) For vehicles used off road, such as all-terrain vehicles, pick-ups, trucks, buggies, quads				

Dimensional sketch

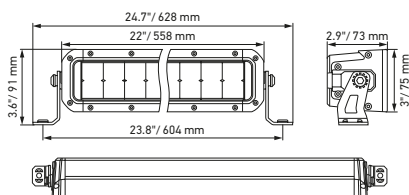
Black Magic 7" Double Row Mini Lightbar



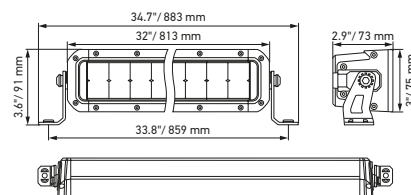
Black Magic 13" Double Row Mini Lightbar



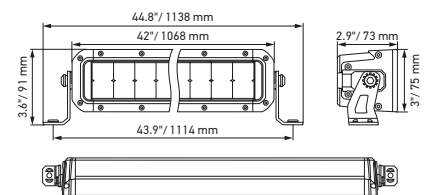
Black Magic 21.5" Double Row Lightbar



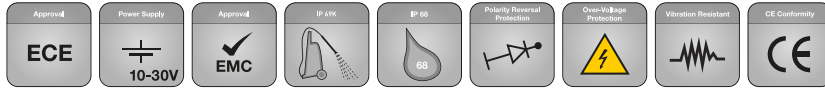
Black Magic 30" Double Row Lightbar



Black Magic 40" Double Row Lightbar



TECHNICAL DETAILS

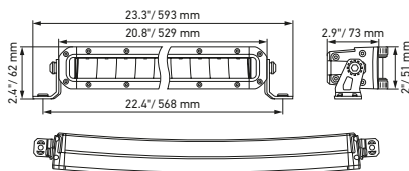


Technical data

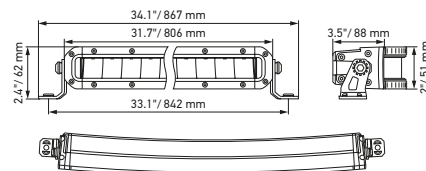
Version	Slim Curved Lightbar		
	20"	32"	40"
Part number	1FJ 358 196-501	1FJ 358 196-511	1FJ 358 196-521
Rated voltage	Multi-voltage		
Operating voltage	10–30 V		
Current consumption	3.68 A (12 V) 1.9 A (24 V)	5.8 A (12 V) 3.05 A (24 V)	7.61 A (12 V) 3.84 A (24 V)
Max. power consumption	51 W	81 W	102 W
Light function	High beam (ECE-R149)		
Light source	LED		
Colour temperature	5,700 kelvin		
Material	Aluminium, black stainless steel holder		
Weight	2,450 g	3,300 g	4,000 g
Protection class	IP 68, IP 69K		
EMC protection	ECE-R10		
Mounting	Upright/pendant		
Connection	2,000 mm cable with open ends		
Mounting type	Screw attachment		
ECE ref. no.	45	50	50
Number of LEDs	21	33	42
Light output (effective)	3910 lm	5410 lm	6800 lm
Application	1) For public roads: lorries, cars, SUVs (please observe the applicable legal regulations) 2) For vehicles used off road, such as all-terrain vehicles, pick-ups, trucks, buggies, quads		

Dimensional sketch

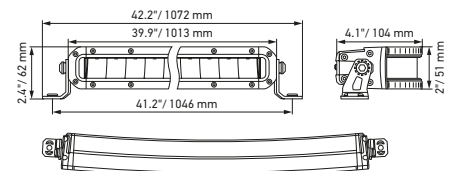
Black Magic 20" Slim Curved Lightbar



Black Magic 32" Slim Curved Lightbar



Black Magic 40" Slim Curved Lightbar



TECHNICAL DETAILS

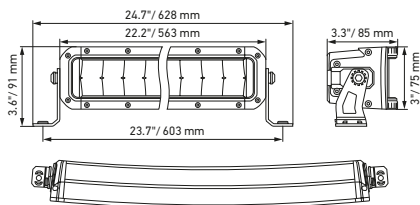


Technical data

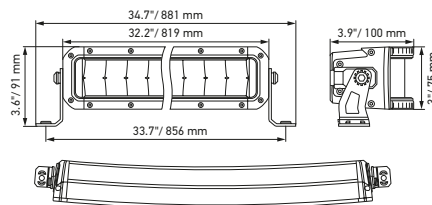
Version	Double Row Curved Lightbar		
	21.5"	30"	40"
Part number	1FJ 358 196-601	1FJ 358 196-611	1FJ 358 196-621
Rated voltage	Multi-voltage		
Operating voltage	10 – 30 V		
Current consumption	6.78 A (12 V) 3.45 A (24 V)	10.03 A (12 V) 5.06 A (24 V)	14.08 A (12 V) 6.94 A (24 V)
Max. power consumption	91 W	134 W	186 W
Light function	High beam (ECE-R149)		
Light source	LED		
Colour temperature	5,700 kelvin		
Material	Aluminium, black stainless steel holder		
Weight	3,200 g	4,500 g	5,500 g
Protection class	IP 68, IP 69K		
EMC protection	ECE-R10		
Mounting	Upright/pendant		
Connection	2,000 mm cable with open ends		
Mounting type	Screw attachment		
ECE ref. no.	45	40	45
Number of LEDs	40	60	80
Light output (effective)	5880 lm	7900 lm	9222 lm
Application	1) For public roads: lorries, cars, SUVs (please observe the applicable legal regulations) 2) For vehicles used off road, such as all-terrain vehicles, pick-ups, trucks, buggies, quads		

Dimensional sketch

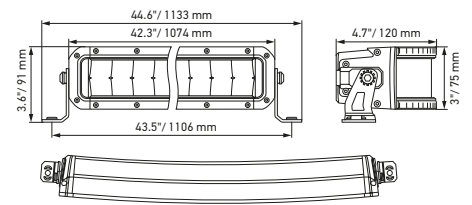
Black Magic 21.5" Double Row Curved Light Bar



Black Magic 30" Double Row Curved Lightbar



Black Magic 40" Double Row Curved Lightbar

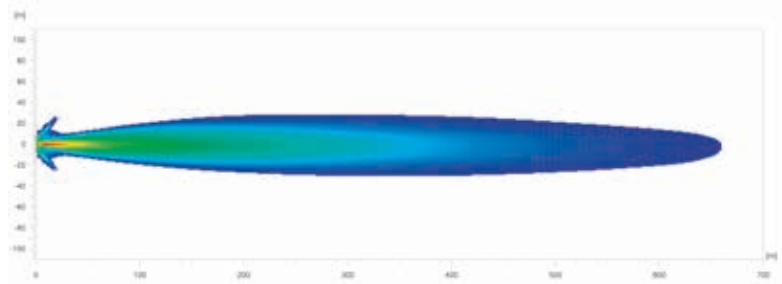


ILLUMINATION

The light distribution diagrams show the reaches of two headlamps.

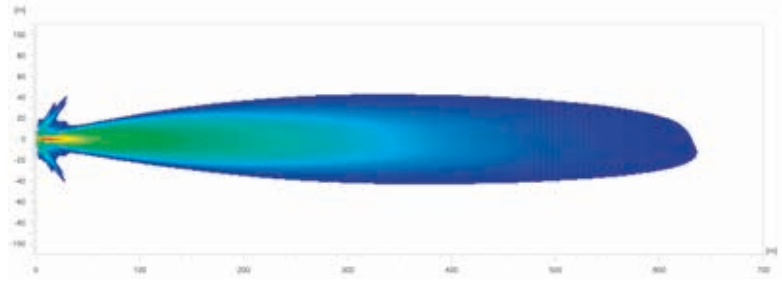
Black Magic 20" Slim Lightbar

1FJ 358 196-301



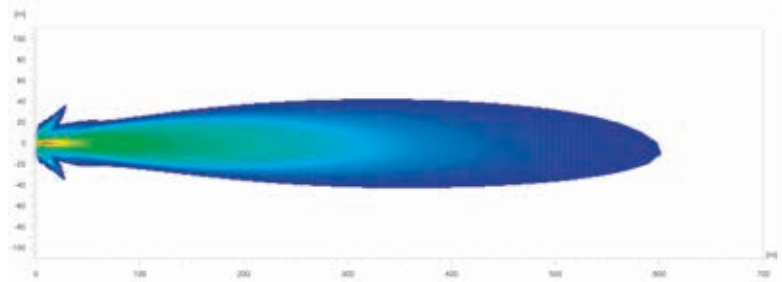
Black Magic 32" Slim Lightbar

1FJ 358 196-311



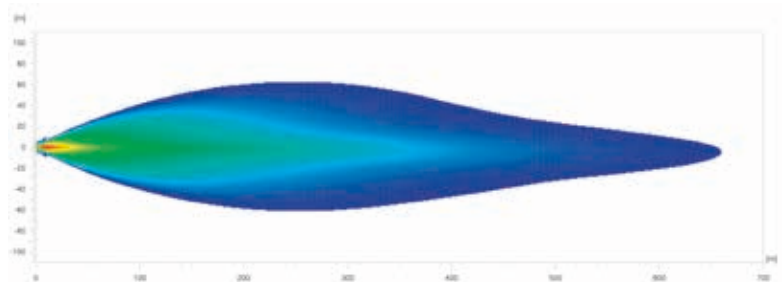
Black Magic 40" Slim Lightbar

1FJ 358 196-321



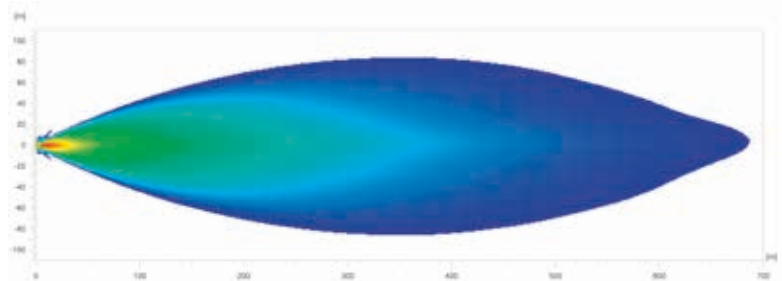
Black Magic 21.5" Double Row Light Bar

1FJ 358 196-401



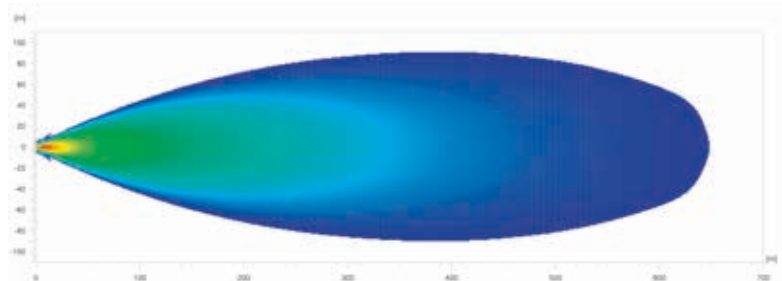
Black Magic 30" Double Row Lightbar

1FJ 358 196-411



Black Magic 40" Double Row Lightbar

1FJ 358 196-421

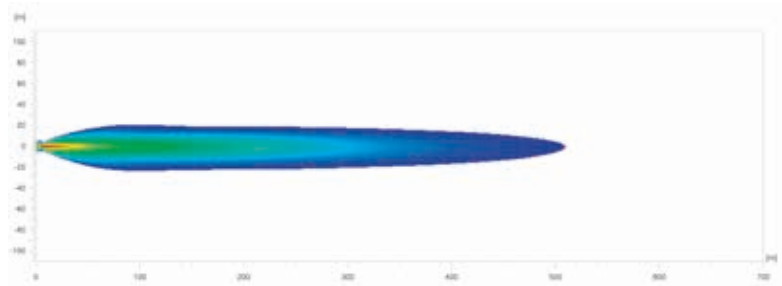


ILLUMINATION

The light distribution diagrams show the reaches of two headlamps.

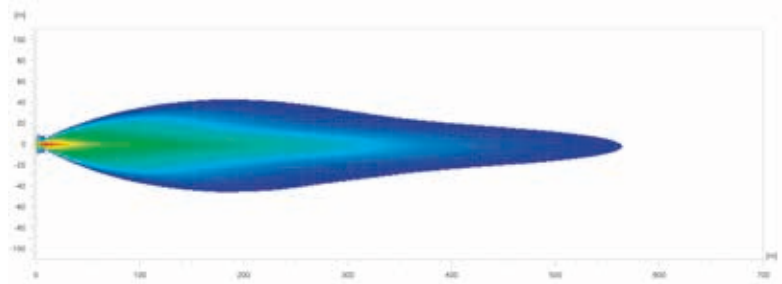
Black Magic 7" Double Row Mini Lightbar

1FJ 358 196-451



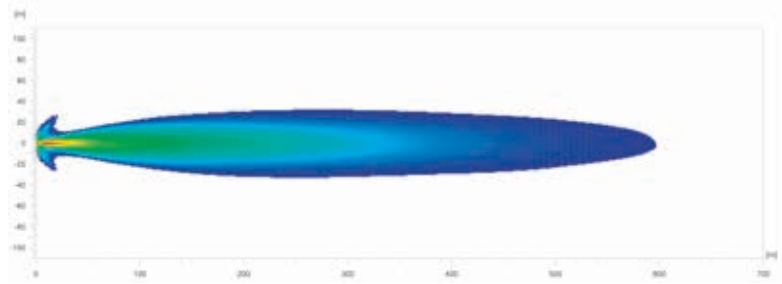
Black Magic 13" Double Row Mini Lightbar

1FJ 358 196-461



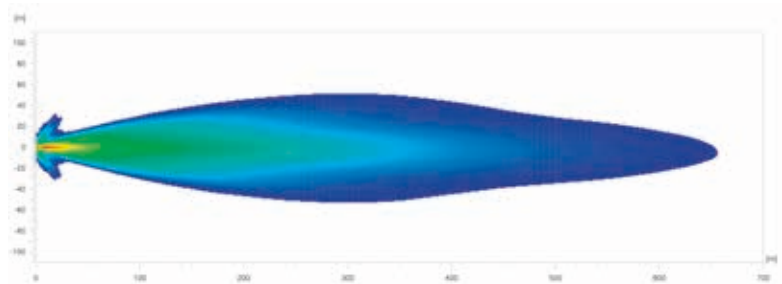
Black Magic 20" Slim Curved Lightbar

1FJ 358 196-501



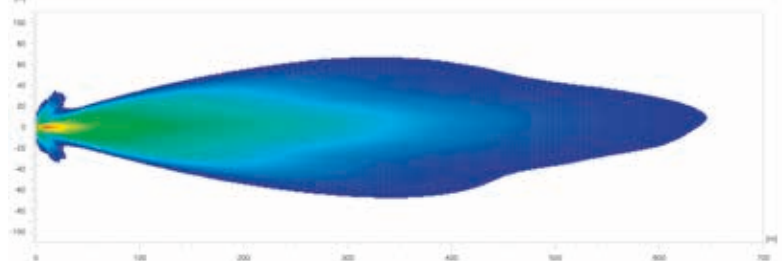
Black Magic 32" Slim Curved Lightbar

1FJ 358 196-511



Black Magic 40" Slim Curved Lightbar

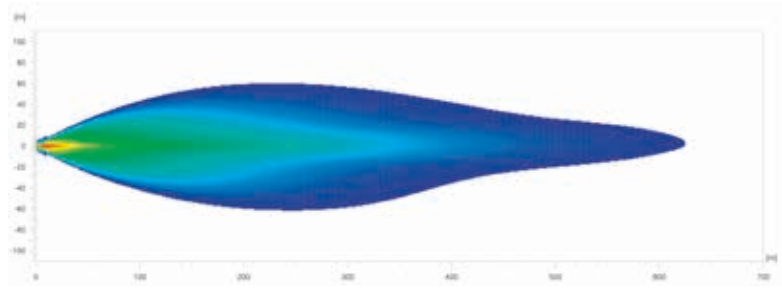
1FJ 358 196-521



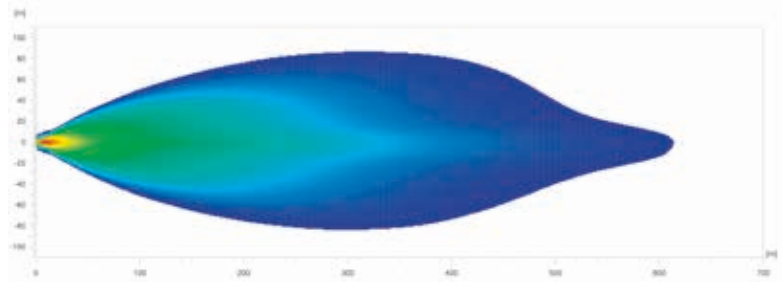
ILLUMINATION

The light distribution diagrams show the reaches of two headlamps.

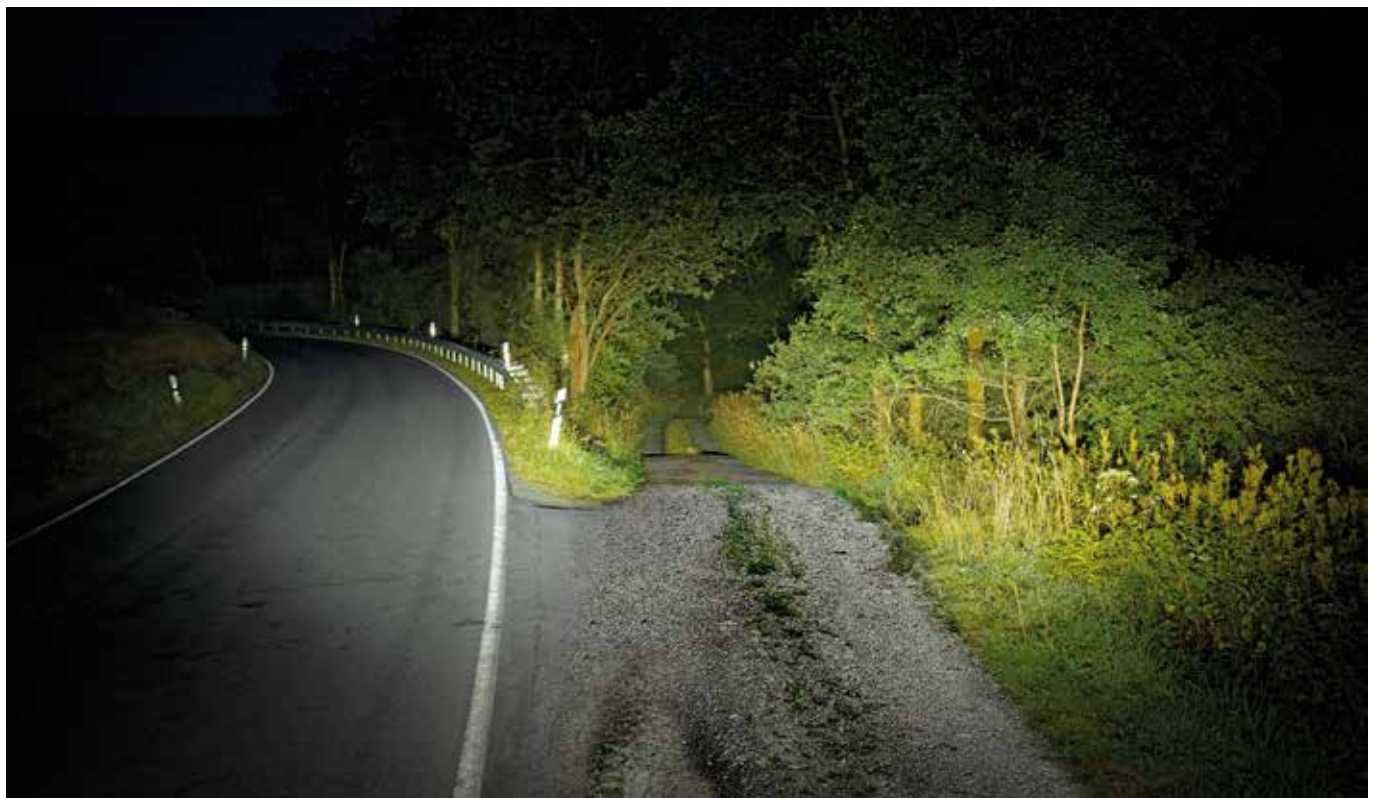
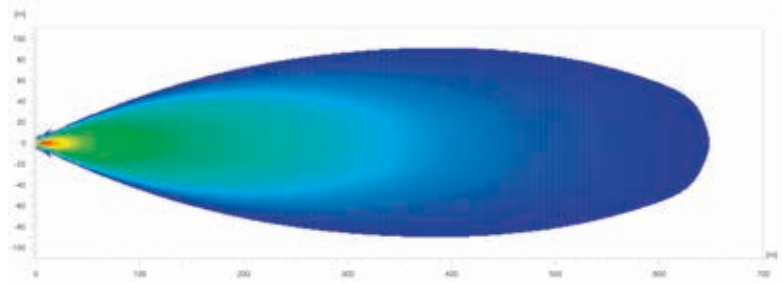
Black Magic 21.5" Double Row Curved Light Bar
1FJ 358 196-601



Black Magic 30" Double Row Curved Lightbar
1FJ 358 196-611
















Black Magic 40" Double Row Curved Lightbar
1FJ 358 196-621



The Black Magic ECE Light Bars can be used both on and off road. The example shows the illumination of the Black Magic Slim Light Bar 40".

PROGRAM OVERVIEW




Product image	Description	Part number	VPE*
Black Magic Slim Lightbar			
	20" Slim Lightbar, eTSS, ECE-Ref. 50	1FJ 358 196-301	1
	32" Slim Lightbar, eTSS, ECE-Ref. 50	1FJ 358 196-311	1
	40" Slim Lightbar, eTSS, ECE-Ref. 50	1FJ 358 196-321**	1
Black Magic Double Row Mini Lightbar/Black Magic Double Row Lightbar			
	7" Double Row Mini Lightbar, eTSD, ECE-Ref. 30	1FJ 358 196-451	1
	13" Double Row Mini Lightbar, eTSD, ECE-Ref. 40	1FJ 358 196-461	1
	21.5" Double Row Light Bar, eTSD, ECE ref. 45	1FJ 358 196-401	1
	30" Double Row Lightbar, eTSD, ECE-Ref. 45	1FJ 358 196-411	1
	40" Double Row Lightbar, eTSD, ECE-Ref. 50	1FJ 358 196-421**	1
Black Magic Slim Curved Lightbar			
	20" Slim Curved Lightbar, eTCS, ECE-Ref. 45	1FJ 358 196-501	1
	32" Slim Curved Lightbar, eTCS, ECE-Ref. 50	1FJ 358 196-511	1
	40" Slim Curved Lightbar, eTCS, ECE-Ref. 50	1FJ 358 196-521**	1
Black Magic Double Row Curved Lightbar			
	21.5" Double Row Curved Light Bar, eTCD, ECE ref. 45	1FJ 358 196-601	1
	30" Double Row Curved Lightbar, eTCD, ECE-Ref. 40	1FJ 358 196-611	1
	40" Double Row Curved Lightbar, eTCD, ECE-Ref. 45	1FJ 358 196-621**	1

* Packaging unit

** For stable four-point mounting of the Light Bar from 40", we recommend the accessory bracket set on page 10.

ACCESSORIES

(not included in delivery)

Product image	Description	Part number
	<p>The bracket set for rear mounting is recommended as a mounting accessory for additional support of the LED Light Bars in the lengths: 40", 50" and 52".</p> <p>The set includes two holders and two sets of screws. The holders are inserted into the headlamp's guide rail and securely fastened in the desired position using the screws.</p>	
	<p>Holder set for light bar version "Slim Row"</p>	<p>8HG 358 176-371</p>
	<p>Holder set for light bar version "Double Row"</p>	<p>8HG 358 176-381</p>

APPLICATION EXAMPLES



The Black Magic ECE Light Bars can be used both on and off road.