



Hella marine



Discover a World of Colour

APELO 
Lighting Ecosystem

SYNCHRONISED VIBRANT COLOUR

Apelo Light Controller

Transform your space into a stunning visual display, with unified control of all Apelo RGB/W Underwater, Interior, Flood, and Courtesy lamps; plus a selection of universal RGB products.

Effortlessly group and intelligently network multiple sets of lights and controllers wirelessly over Bluetooth® Mesh. Show your true colours with fully synchronised, completely customisable lighting throughout your vessel.



Customisable Lighting

Easily create custom RGB/W lighting and animations, or switch between preset modes, combining convenience and creativity in every use.



Bluetooth® Mesh Communication

Minimal wiring required for controller integration – the units communicate wirelessly over robust peer-to-peer Bluetooth® Mesh networking.



Effortless Control

Seamlessly move between a multi-pole switch and the intuitive Apelo App to control your lighting.



Synchronised Lighting

Synchronise light colours and groups throughout your vessel. Settings are distributed between and stored on connected controllers, so a constant Smartphone connection isn't required.

Apelo Light Controller App

Pair the Apelo App with the Apelo Light Controller for infinite creativity and control of all compatible connected RGB/W lighting.

Enjoy the convenience of centralised control in the palm of your hand. Whether you have a smaller pleasure craft, or large luxury vessel, Bluetooth® Mesh ensures easy, wireless control from anywhere on board.

Use the intuitive Apelo App to easily manage multiple controllers and light groups, access built-in presets, and express yourself with vivid colours and vibrant custom lighting sequences throughout your craft.

No Phone? No Worries...

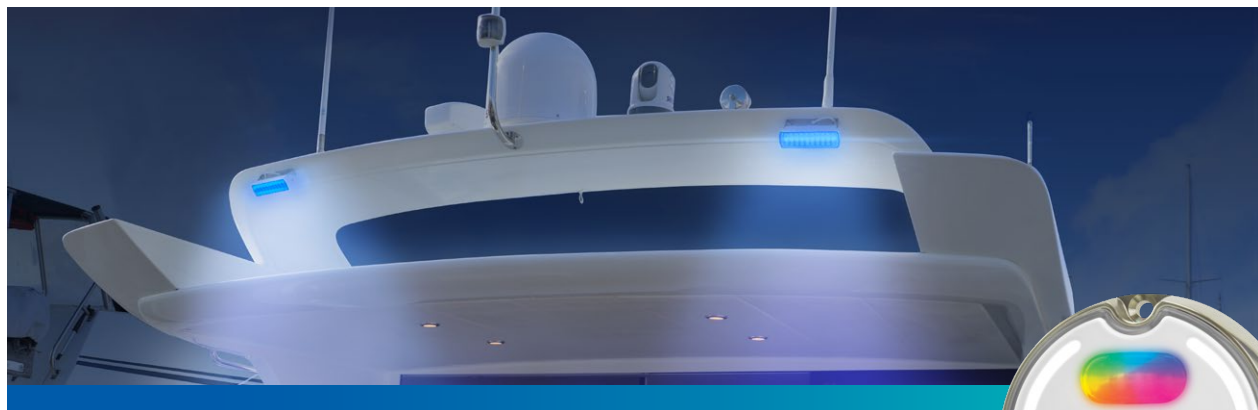
Directly wired Switch control allows for simple cycling through colour modes; press and hold, and the lights will dim or brighten. Switch control can be used alongside the Apelo Light Controller and Apelo App.

Control more than just RGB

Apelo Light Controller is also able to manage single colour, dual colour, dual function, and dual intensity lights such as EuroLED 75/95, dual intensity Sea Hawk XLR floodlights, and Sea Hawk Light bars.



iPhone and App Store are registered trademarks of Apple Inc.
Google Play is a registered trademark of Google Inc.



Description	Pack Qty	Part Number
Apelo Light Controller	Single	5XA 285 814-001

See page 10-11 for full specifications.



Scan or Click
for more info



APELO CONTROLLER BRINGS IT ALL TOGETHER

Control

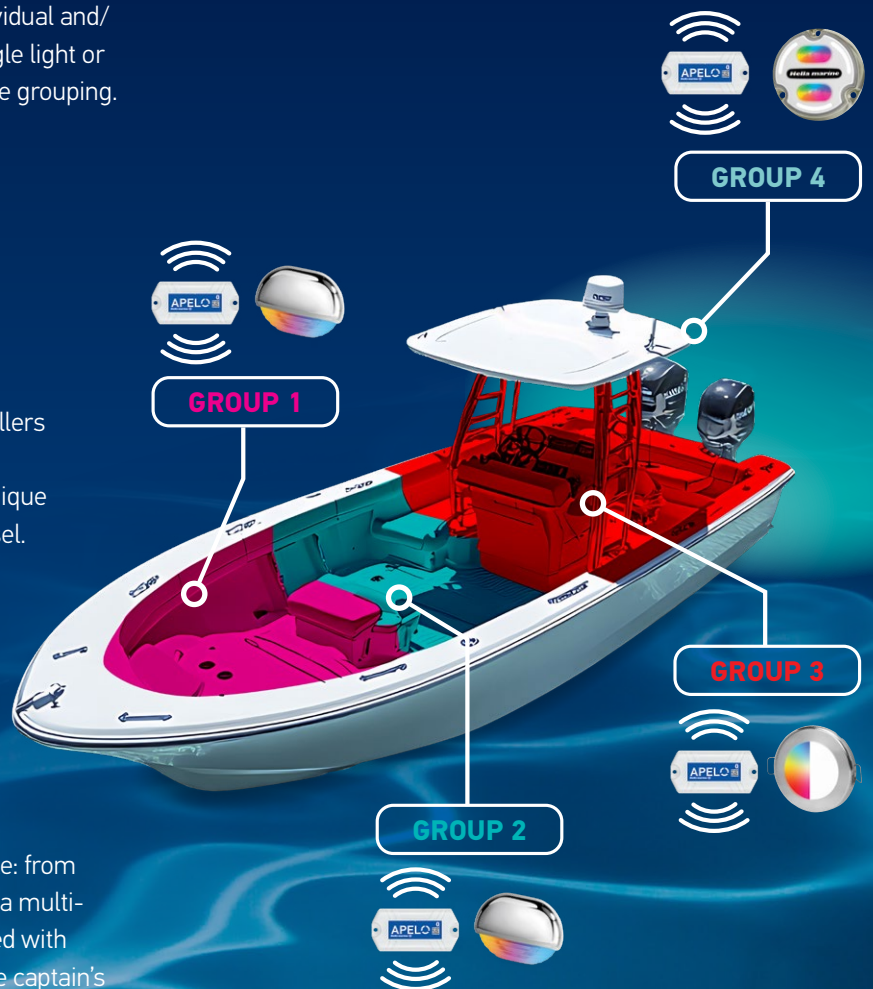
Connect Apelo Light Controllers to any combination of compatible Apelo RGB and RGB/W Underwater, Interior, Flood, and Courtesy lamps for individual and/or synchronised control. Easily adjust a single light or trigger a colour pattern throughout an entire grouping.

Group

Use the intuitive Apelo App to easily group multiple lights and manage multiple controllers (individually, or groups containing multiple controllers and lights), to create areas of unique colours and functions throughout your vessel. All without additional wiring.

Create

Make it as simple or as advanced as you like: from basic coloured mood and safety lighting, to a multi-colour, animating entertainment area synced with underwater lights, while also preserving the captain's night vision with red downlighting at the controls.





Apelo A1 - 1800 Lumen

Enhance your marine entertainment lighting with the most powerful light in its class, the Apelo A1. Delivering vibrant blue or intense white, or full spectrum RGB colour experiences, the A1 uses intelligent optical design to get impressive illumination levels that outshine the competition.

The A1 RGB light gives you complete control to choose any colour you wish, with Apelo's optical intelligence creating an even distribution of colour across the transom.

A completely sealed, corrosion resistant, thermal polymer housing ensures ongoing protection against the harshest environments. The A1 is suitable for mounting to any hull material. All Apelo models are equipped with an advanced thermal management system to allow operation in or out of the water.

Apelo Underwater Lights are made in New Zealand, and built to last.



Compatible with Apelo
Light Controller & App



Scan or Click
for more info



Thermal Polymer Housing

Function	Lens	Part Number
Dual Blue / White	White	2LT 016 145-011
Dual Blue / White	Charcoal	2LT 016 145-001
RGB	White	2LT 016 146-011
RGB	Charcoal	2LT 016 146-001

*Packaging Retail carton for single pack. PN shown in table above
Trade Carton Pack, replace final PN digit '1' with '2'*

See page 10-11 for full specifications.



Apelo A2 - 3000 Lumen

The Apelo A2 offers bright 3000-lumen light output, plus additional features including a stylish Edge Light.

Available in Blue / White or full-spectrum RGB, the A2's Blue / White version includes a 'Fish mode' strobe function that's sure to attract attention, including from your next big catch. RGB allows for any colour selection.

† The corrosion-resistant, anodised aluminium housing is designed for aluminium hulls and boats that aren't permanently submerged or at mooring.

For permanent submersion, the marine-grade bronze housing option provides superior durability and thermal management, and is suitable for fibreglass, timber, steel, and composite hulls.

‡ Marine grade bronze models should only be used on aluminium hulls with an Apelo Surface Mount Spacer, or suitable isolation spacer.

Apelo Underwater Lights are made in New Zealand, and built to last.



Compatible with Apelo
Light Controller & App



Scan or Click
for more info



Hard Anodised Aluminium Housing

Light Function	Lens	Part Number
Dual Blue / White	Charcoal	2LT 016 147-001
RGB	Charcoal	2LT 016 148-001

Packaging Retail carton for single pack. PN shown in table above
Trade Carton Pack, replace final PN digit '1' with '2'

Marine Grade Bronze Housing

Light Function	Lens	Part Number
Dual Blue / White	White	2LT 016 147-101
RGB	White	2LT 016 148-101

Packaging Retail carton for single pack. PN shown in table above
Trade Carton Pack, replace final PN digit '1' with '2'

See page 10-11 for full specifications.



Apelo A3 Bronze - 6000 Lumen

The ultimate in the Apelo Underwater Light range is the A3 Bronze. Supercharged with 6000 lumen light output, and a larger overall size than the Apelo A2 Bronze.

The A3 model has an improved formula with double the light output, maximizing the vibrant blue or intense white, or full spectrum RGB/W colour. The blue or white model retains the strobe functionality, the RGB/W version includes dedicated white light emitting LEDs, adding brighter and more intense white light to your RGB underwater lighting. Both versions offer the Edge Light function.

Intelligent optics spread light across the water without losing light to the depths, projecting wide across the transom. With the addition of Nickel-silver to the extremely corrosion resistant housing, the Apelo A3 is perfect for permanently submerged installations on larger boats or yachts. Suitable for fibreglass, timber, steel, and composite hulls. Only mount on aluminium hulled vessels with a suitable isolation spacer.

Apelo Underwater Lights are made in New Zealand, and built to last.



Function	Lens	Part Number
Dual Blue / White	White	2LT 016 830-001
RGB/W	White	2LT 016 831-001

See page 10-11 for full specifications.



Compatible with Apelo
Light Controller & App



Scan or Click
for more info



Apelo EuroLED 75 RGB/W Downlight

A downlight with no compromise to form or function, the Apelo EuroLED 75 RGB/W delivers full spectrum colour, plus bright, even, broad illumination of 150 Lumens from dedicated White LED's. Whether you're setting the mood with vivid colours, or preserving your sensitive night vision with illuminating red, the Apelo EuroLED 75 RGB/W is a powerfully flexible lighting solution.

Single and dual colour models also available.



Compatible with Apelo
Light Controller & App



Scan or Click
for more info



Round Lights

Function	Trim	Connector	Pack Qty	Part Number
RGB/W	White	Tinned marine cable	Single	2JA 017 884-001
RGB/W	Stainless	Tinned marine cable	Single	2JA 017 884-011

See page 10-11 for full specifications.



Apelo RGB Step Lamp

Apelo RGB Step lamps offer a vibrant way to highlight and accent your steps and gangways. Dynamic, synchronised colours will transform your space into a stunning visual display.

Apelo RGB Step Lamps use a simple, 4-wire connection for power and control. Labor saving installation via a 25mm hole. Available with chrome, white or stainless steel trim.



Scan or Click
for more info

Function	Trim	Connector	Pack Qty	Part Number
RGB	White	Tinned marine cable	Single	2JA 958 126-531
RGB	Chrome	Tinned marine cable	Single	2JA 958 126-541
RGB	Stainless	Tinned marine cable	Single	2JA 958 126-551

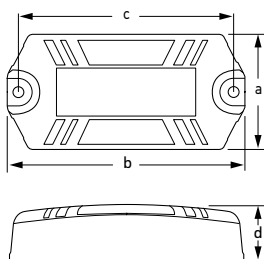
See page 10-11 for full specifications.

Apelo Ecosystem Specifications



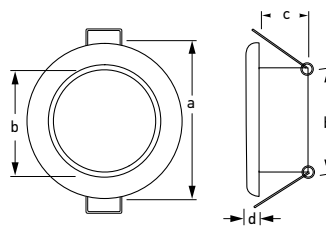
Apelo Light Controller		EuroLED 75 RGB/W Downlight	Apelo RGB Step Lamp	
TRIM DESCRIPTION	White Plastic	5XA 285 814-001	2JA 017 884-001	2JA 958 126-531
	Chrome Plated Plastic	NA	NA	2JA 958 126-541
	Stainless Steel	NA	2JA 017 884-011	2JA 958 126-551
Mounting		Surface Mount	Recessed	Recessed
Voltage		Multivolt™ 12 / 24V DC Nominal	12V DC only (9-16V)	Multivolt™ 12 / 24V DC Nominal
Power Handling		150W / 13A @ 12V DC (6.5A @ 24V DC) (3A Per channel)	NA	NA
Power Consumption		1W	3W RGB (0.25A @ 12V DC) 3W White (0.25A @ 12V DC)	1W / 0.03A (30 mA) MAX
Lumen Light Output		NA	150 lumen measured output (White)	NA
Beam Angle		NA	90° spread	30° downward lighting angle
Protection		IP67 (Completely sealed)	IP6K7 & IP6K9K (Completely sealed)	IP67 (Completely sealed)
Cable Length		140mm tinned marine cable	120mm tinned marine cable	100mm tinned marine cable
Lens Material		NA	PC	UV resistant enhanced impact acrylic
Base Material		V0 Rated Plastic	UV resistant enhanced impact acrylic	NA
Compliance		FC CE UK CA B A	CE UK CA A	CE UK CA A

Light Controller



Dimensions
a = 63mm (2.5")
b = 129mm (5.1")
c = 117mm (4.6")
d = 30mm (1.2")

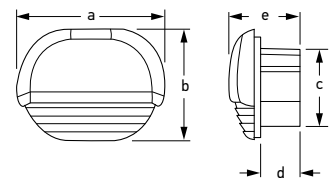
EuroLED 75 RGB/W



(Diagrams not to scale)

Round
a = Ø75mm (3.0") Dia
b = Ø54mm (2.2") Dia
c = 21mm (0.9")
d = 7.4mm (0.3")

RGB Step Lamp



a = 45mm (1.8")
b = 31.5mm (1.3")
c = 25.4mm (1.0")
d = 14mm (0.6")
e = 22.7mm (0.9")



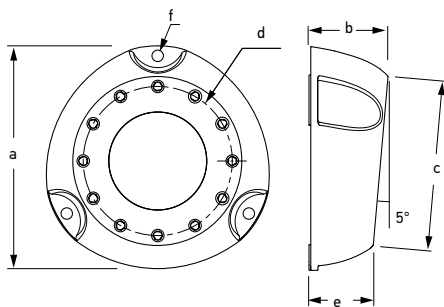
	Apelo A1 Polymer	Apelo A2 Aluminium	Apelo A2 Bronze	Apelo A3 Bronze
Blue / White - White Lens	2LT 016 145-011	NA	2LT 016 147-101	2LT 016 830-001
Blue / White - Charcoal Lens	2LT 016 145-001	2LT 016 147-001	NA	NA
RGB - White Lens	2LT 016 146-011	NA	2LT 016 148-101	2LT 016 831-001 (A3 models are RGB/W)
RGB - Charcoal Lens	2LT 016 146-001	2LT 016 148-001	NA	NA
Mounting	Surface / Transom			
Voltage	Multivolt™ 12 / 24V DC Nominal			
Power Consumption† Blue / White RGB / RGB/W* Edge Light	20W / 1.7A @ 12V, 0.9A @ 24V 15W / 1.25A @ 12V, 0.7A @ 24V NA	30W / 2.5A @ 12V, 1.3A @ 24V 30W / 2.5A @ 12V, 1.3A @ 24V <2W / <0.2A @ 12V, <0.1A @ 24V	30W / 2.5A @ 12V, 1.3A @ 24V 30W / 2.5A @ 12V, 1.3A @ 24V <2W / <0.2A @ 12V, <0.1A @ 24V	70W / 5.9A @ 12V, 2.9A @ 24V 70W / 5.9A @ 12V, 2.9A @ 24V <5W / 0.37A @ 12V, 0.2A @ 24V
Lumen Light Output	1800 lumen (White only)	3000 lumen (White only)	3000 lumen (White only)	6000 lumen (White only)
Beam Angle	90° x 24°			
Protection	Spike protected to +500 volts, Reverse polarity protected to -700 volts. IP68 / IP69: Suitable for submersion in operation and high pressure water jet cleaning High temperature electrical thermal cutout for out of water operation or use			
Cable Length	2.5m / 8.2ft, tinned marine cable			
Lens Material	Grilamid® (Premium grade, UV stable, impact resistant Nylon)			
Base Material	Corrosion proof advanced thermal polymer	Hard anodised aluminium	Marine grade bronze	Marine grade bronze
Compliance	CE UK CA			

† Allow up to 200% of power consumption to account for momentary peak.

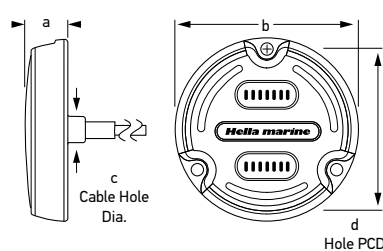
Apelo Surface Mount Spacer

Apelo A1 / A2

Apelo A3

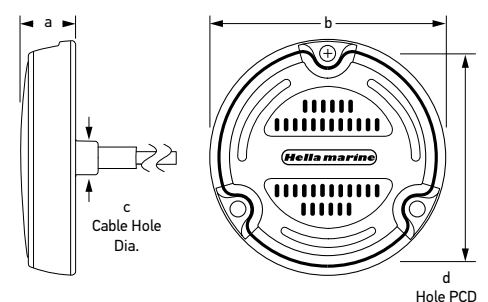


Dimensions
a = Ø125mm (5.0") Dia
b = 45mm (1.8")
c = Ø95mm (3.8") Dia
d = Ø83.5mm (3.4") PCD
e = 35mm (1.4")
f = Ø5.5mm (0.3")



(Diagrams not to scale)

a = 23.5mm (0.9")
b = Ø95mm (3.8") Dia
c = Ø16mm (0.7") Cable Hole Dia
d = 83.5mm (3.3") Mounting PCD



a = 23.5mm (0.9")
b = Ø130mm (5.1") Dia
c = Ø16mm (0.7") Cable Hole Dia
d = 117.5mm (4.6") Mounting PCD



Surface Mount Spacer Accessory

8HG 280 801-001

Note: Apelo Surface mount spacer only fits Apelo A1 & A2 lamps.

APELO LIGHT CONTROLLER

Discover a World of Colour

Wirelessly group, manage, and sync
Apelo RGB lighting for vibrant colour displays,
using the Apelo Controller & App.



iPhone and App Store are registered trademarks of Apple Inc.
Google Play is a registered trademark of Google Inc.

Hella marine Australia
HELLA Australia Pty Ltd
4 Hargrave Place
Mentone, Victoria 3194 Australia
Phone 1800 061 729
hellaorders@hella.com
custservice@hella.com

Hella marine Asia Pacific
HELLA New Zealand Ltd
81-83 Ben Lomond Crescent
Pakuranga 2010,
Auckland, New Zealand
Phone +64 9 577-0366
info@hellamarine.com

Hella marine Europe
HELLA GmbH & Co. KGaA
Rixbecker Str. 75
59552 Lippstadt
Germany
Phone +49 29 41 38 66 44
info@hella.com

For Distributors in other
regions, please visit
hellamarine.com

See the Apelo Ecosystem



facebook.com/hellamarine
youtube.com/user/hellamarine

instagram.com/hellamarineglobal
linkedin.com/company/hella-marine

www.hellamarine.com