



BRIEF INFORMATION

RokLUME 190 TP

- › Developed specifically for Mining applications
- › Thermo Pro plastic housing
- › Compact size with powerful light output

PRODUCT FEATURES

The compact RokLUME 190 TP is an ideal LED work light that combines a powerful light output with a practical design. The work light is designed so that it can be used anywhere thanks to its compact dimensions. The innovative thermally conductive plastic housing also features cooling fins which ensure the required heat dissipation from the high-power LEDs. Along with weight reduction, the new material also offers the advantage of complete corrosion resistance.

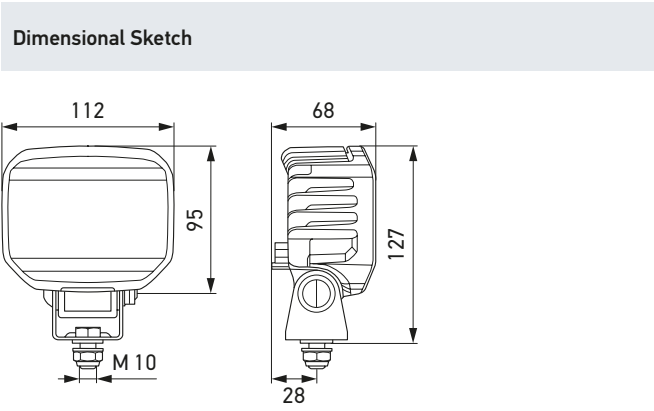
The light output from the six high-power LEDs is an impressive 1,850 lumens. The light is distributed by a specially developed multi-faceted reflector, thus ensuring homogenous illumination. Models with varying cover lenses lend themselves either for close-range or long-range illumination, as required. Energy consumption is just 26 watts of power. Because of such low energy consumption, the RokLUME 190 TP is ideal for use in vehicles powered by batteries and in those where there are already significant demands on the alternator. The multivolt electronics of this headlamp are designed for vehicles with vehicle electric system voltage of 12 and 24 volt.

With a colour temperature of 5,000 kelvin, the light from the LED work light is very similar to daylight. This helps to distinguish colours more easily in the dark, and makes sensory perception through the human eyes much easier. In turn, this prevents the eyes from tiring quickly during work at night.

The integrated electronics protect the device in the event of polarity inversion and guarantee constant brightness, even when operating voltage fluctuates between 10,5 and 32 volts. Temperature sensors additionally protect the work light from overheating. Only in this way can the long service life of the LEDs and a safe working environment at night be guaranteed.

TECHNICAL DETAILS

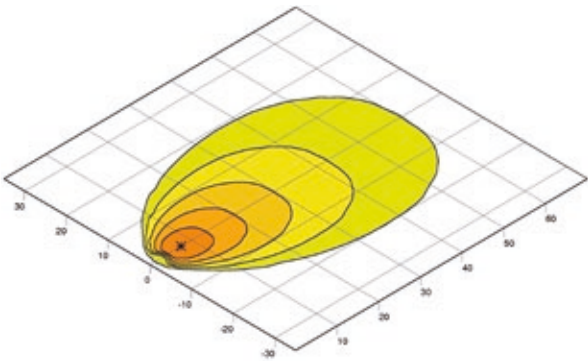
Technical data	
Operating voltage range	Multi-voltage (10,5 – 32 V)
Rated voltage	12 V and 24 V
Power consumption	26 W
Light output (warm)	1.850 lm
Light source	6 high-power LEDs
Colour temperature	5.000 K
Material	Housing: thermally conductive plastic
Weight	450 g
Protection class	IP 6K9K, IP 6K8
Approved	ECE-R10, ADR / GGVSEB
Compliant	RCM
Protection	Polarity reversal protection, overheating protection
Salt spray resistance	720 h acc. to DIN EN ISO 9227
Mounting	Upright and pendant, glass-fibre reinforced plastic bracket
Connection	DEUTSCH DT connector



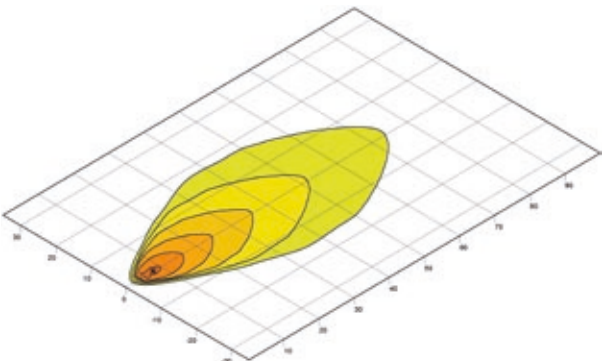
RANGE OVERVIEW

1GA 996 488-...	-501	-511
Close-range illumination	X	-
Long-range illumination	-	X
Swivelling base / bracket width	42 mm	42 mm

LIGHT DISTRIBUTION



Close-range illumination



Long-range illumination

