



BRIEF INFORMATION

High Bay round

- CO₂ emission reduction in comparison to metal halide lamps
- Built-in dimming function
- Increased work safety through optimized lighting and specially developed colour temperature 5,000 K
- For various applications such as warehouse, workshop and factory

PRODUCT FEATURES

High Bay round offers optimal lighting output which can have a major impact on the ability of workers to do their jobs safely, through reducing workplace fatigue and the risk of injuries. The specially developed LED colour temperature of 5,000 K plays a large part in helping to preventing tiredness through a well-lit workplace. The quality aluminium housing and reflector are specifically designed for high ceilings producing a high light output (140 lumens per watt) with low heat generation and low energy consumption. In addition, a dimming function has been built into this lamp (3 in 1 dimming function, 0-10 V, PWM signal and resistance), efficiently controlling the different demands of brightness needed. The very low energy use is environmentally friendly, reducing CO₂ emissions compared to conventional metal halide lamps.

Power surges occur in supply networks due to different voltage levels which are detrimental to electronic components of LED fixtures – High Bay round is protected from such voltage spikes, guaranteeing a longer working lifetime. The different application areas allow a flexible use of the High Bay round, such as in warehouses, workshops and factories and many more.

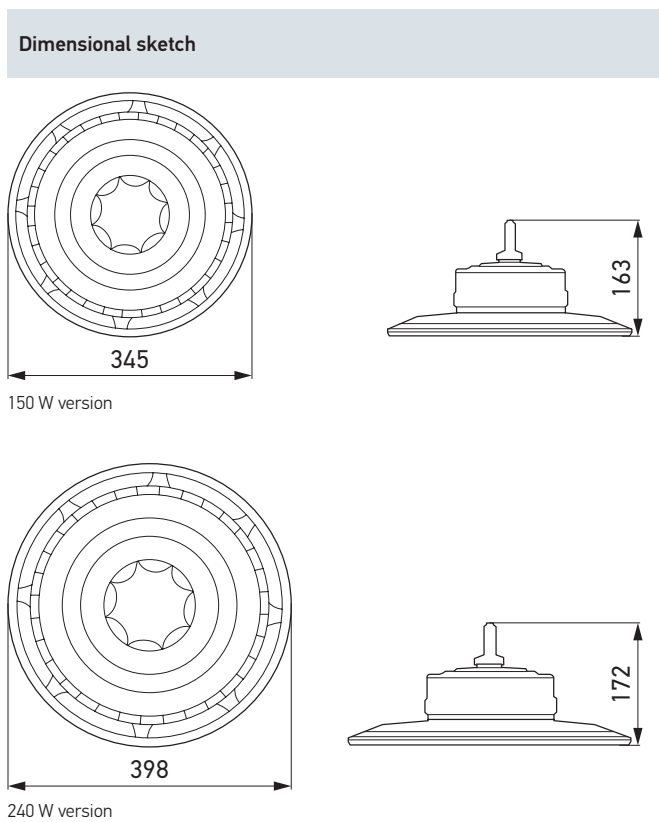
Further key features:

- Power factor > 0.9
- Surge protection: 4KV Line-Line, 6KV Line-Earth
- Californian Proposition 65 conform (US, CA)

TECHNICAL DETAILS

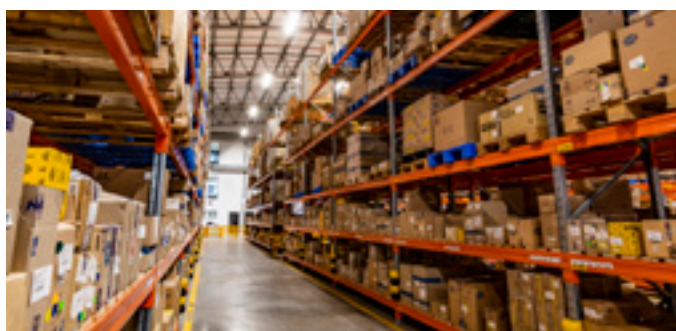


Technical data		150 W	240 W
Operating voltage	Multi-voltage (100 – 305 V AC)		
Rated voltage	110 V AC / 230 V AC		
Power consumption	150 W	240 W	
Light output	21,000 lm	33,600 lm	
Light source	LED		
Colour temperature	5,000 K		
Material	Housing: die-cast aluminium		
Weight	2,800 g	4,100 g	
Temperature range	-20 °C to +40 °C		
Protection class	IP 65		
Type approval	CE, UKCA, RoHS, UL, cUL, RCM		
Mounting	Pendant		
Connection	200 mm cable with open ends		

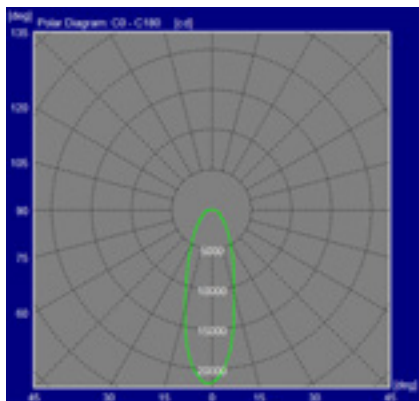


POSSIBLE APPLICATION AREAS

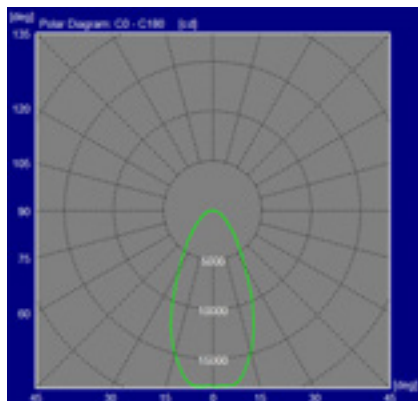
1. warehouse | 2. workshop | 3. factory



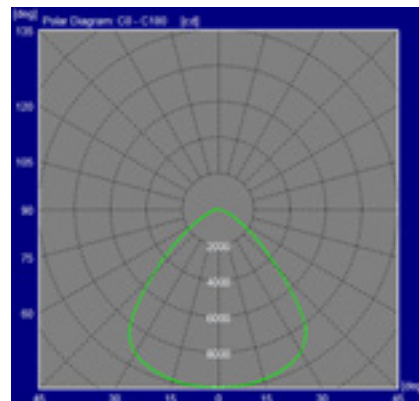
LIGHT DISTRIBUTION



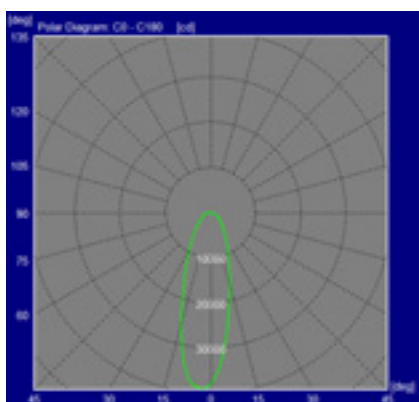
150 W, 30° beam angle



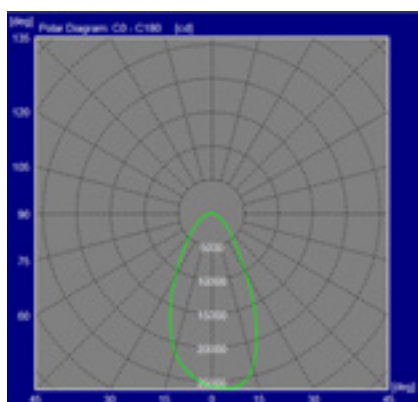
150 W, 60° beam angle



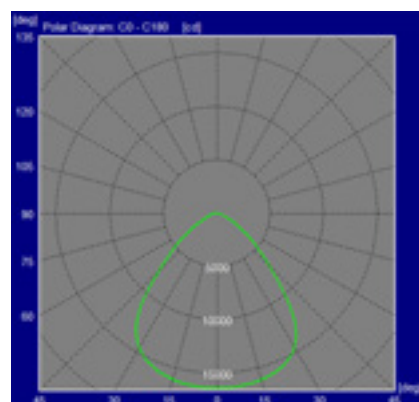
150 W, 90° beam angle



240 W, 30° beam angle




240 W, 60° beam angle



240 W, 90° beam angle

PROGRAM OVERVIEW

Product picture	Certified for region	Variant	Beam angle	Part number
	Europe (EU), Australia (AU), South Africa (SA), United States (US), Canada (CA)	150 W	30°	1G9 996 372-301
			60°	1G9 996 372-311
			90°	1G9 996 372-321
		240 W	30°	1G9 996 372-331
			60°	1G9 996 372-341
			90°	1G9 996 372-351

HELLA GmbH & Co. KGaA,

Rixbecker Straße 75

59552 Lippstadt/Germany

Tel. +49 2941 38-0

Fax +49 2941 38-71 33

info@hella.com

www.hella.com

© HELLA GmbH & Co. KGaA, Lippstadt
J01825/03.22

Subject to technical and price modifications.