



BRIEF INFORMATION

Luminator Chrome auxiliary spotlight



PRODUCT FEATURES

- Due to its impressive external dimensions, it is particularly suitable for trucks, large pick-ups and off-road vehicles.
- High-quality chrome-plated zinc die-cast housing.
- ECE type-approved high beam for 12 and 24 V vehicle systems $\text{\textcircled{E}}$ 1928 (Ref. 37.5) and $\text{\textcircled{E}}$ 44484 (Ref. 17.5).
- $\text{\textcircled{O}}$ 22 cm
- Weight: 2,600 g

CONTENTS OF PACKAGE

- H1 spotlight with position light W5W and blue cover lens
- Attachment material
- Mounting instructions

Spotlight, 12 V / 24 V (ECE Ref. 37.5)	1F8 007 560-321
Spotlight, 12 V / 24 V (ECE Ref. 17.5)	1F8 007 560-331

ACCESSORIES

Protective cap*	8XS 147 945-021
-----------------	------------------------

* Protective caps are not legally authorised in some countries. Before using them on public roads, please check with the relevant government agency.

www.hella.com/eliver



See the light!

Auxiliary lights from HELLA. The right light for every application. Try them out online now!

www.hella.com/lightshow

www.hella.com/truck

www.hella.com/offroad

www.hella.com/eliver

RANGE OVERVIEW



Luminator Chrome - Ø 22 cm

H1 spotlight with ECE type approval (E) 1928 (Ref. 37.5) and (E) 303 / (E) 44484 (Ref. 17.5). H3 fog light with ECE approval (E) 18245. Weight: 2.600 g.

Spotlight, 12 V / 24 V (ECE Ref. 37.5)	1F8 007 560-311
Spotlight, 12 V / 24 V (ECE Ref. 17.5)	1F8 007 560-341
Fog light, 12 V / 24 V (not shown)	1N8 007 560-021



Luminator Chromium CELIS® - Ø 22 cm

H1 spotlight black with round CELIS LED position light ECE type-approved high beam (E) 1753 for 12 and 24 V vehicle systems. Weight: 2,800 g.

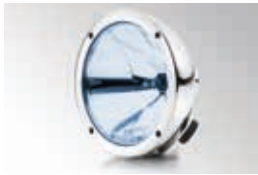
Spotlight, 12 V / 24 V (ECE Ref. 17.5)	1F8 007 560-211
--	------------------------



Luminator Chromium Compact - Ø 17 cm

H1 spotlight with ECE type approval (E) 1901 (Ref. 37.5) and (E) 1902 (Ref. 17.5). H3 fog light with ECE approval (E) 1901. Weight: 1.500 g.

Spotlight, 12 V / 24 V (ECE Ref. 37.5)	1F3 009 094-031
Spotlight, 12 V / 24 V (ECE Ref. 17.5)	1F3 009 094-071
Fog light, 12 V / 24 V (not shown)	1N 3009 094-011



Luminator Chromium Compact Blue - Ø 17 cm

H1 spotlight, blue end lens with ECE type-approval (E) 1901 (Ref. 37.5). Weight: 1,500 g.

Spotlight, 12 V / 24 V (ECE Ref. 37.5)	1F3 009 094-171
--	------------------------



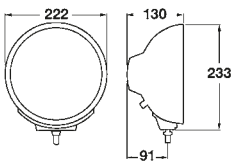
Luminator Chromium Compact CELIS - Ø 17 cm

H1 spotlight with round CELIS® LED position light. ECE type-approved high beam (E) 1901 (Ref. 37.5) and (E) 1902 (Ref. 17.5) for 12 and 24 V vehicle systems. Weight: 1,500 g.

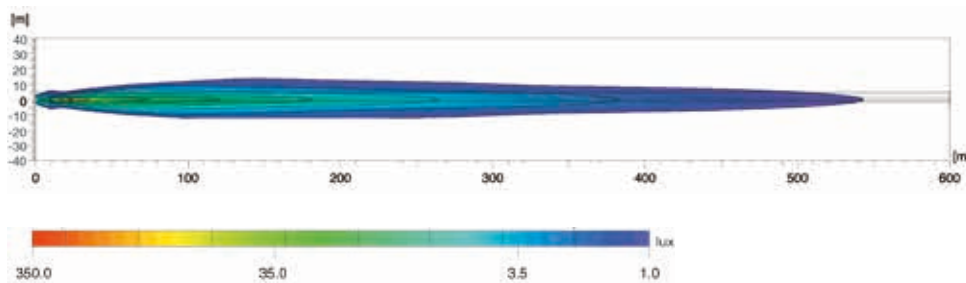
Spotlight, 12 V / 24 V (ECE Ref. 37.5)	1F1 009 094-051
Spotlight, 12 V / 24 V (ECE Ref. 17.5)	1F1 009 094-091

LIGHT DISTRIBUTIONING

ECE Ref. 37.5



Mounted: upright



Lux is the unit of illuminance.

It expresses the luminous flux from the light source that impinges on a specific area. For example; an office should be illuminated with at least 500 lux, and the human eye can still read a newspaper without any problems at 1 lux. The values underneath the lux axis show at which point of the light distribution diagram the corresponding illumination intensity is reached.

Ref. 50, 40, 37.5, 17.5 and 12.5:

The reference number (Ref.) is a figure that applies to a spotlight. Under ECE regulations, this reference number may not exceed the upper limit of 100 per vehicle. This figure includes the values for the two standard high beams (left and right headlights) plus those of any other installed spotlights. The appropriate value is engraved on the lens of each approved headlight.