



BRIEF INFORMATION

HELLA VALUEFIT SQ 1000 & SQ 1800 LED

- HELLA VALUEFIT LED work lamp and reversing lights with corrosion-free, plastic housing
- Compact design for universal applications
- Upright mounting with tilt joint for more flexibility

PRODUCT FEATURES

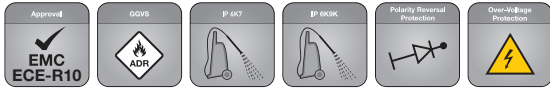
The HELLA VALUEFIT SQ 1800 series offers two work lamps with different cable lengths and 1,800 lumen light output each. The powerful light output of the HELLA VALUEFIT SQ 1000 reversing spotlight is 1,000 lumen. The compact dimensions are an advantage for both series – ideal for installation at elevated mounting positions.

The swivelling mounting enables flexible alignment of the illumination to the desired working and viewing areas. The central positioning of the bracket increases the stability of the holder and the even distribution of forces on the device. This can also have a positive effect on the lifetime of the headlamp.

All three variants are ADR (GGVSEB) tested and made of corrosion-free plastic. This lowers the weight and provides better vibration resistance. Approval according to ECE-R10 ensures electromagnetic compatibility. The headlamps are also characterised by their surge resistance.

The HELLA VALUEFIT products are safe and reliable and enable a cost-effective changeover to LED technology.

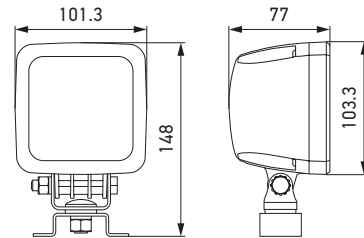
TECHNICAL DETAILS



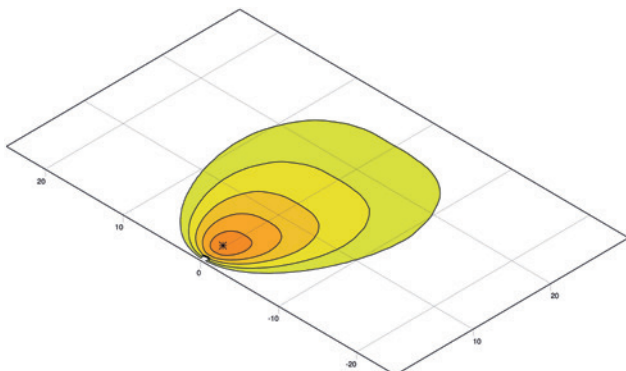
Technical data

Variant	HELLA VALUEFIT SQ 1000 LED	HELLA VALUEFIT SQ 1800 LED
Rated voltage	Multi voltage	
Operating voltage	12 V / 24 V	12 V / 24 V / 48 V
Current consumption	0.9 A (12 V) / 0.5 A (24 V)	1.6 A (12 V) / 0.8 A (24 V) / 0.4 A (48 V)
Power consumption	Max. 11 W (1,000 lm)	Max. 19 W (1,800 lm)
Light function	Close-range	
Light source	LED	
Colour temperature	6,000 K	
Material	Corrosion-free plastic housing	
Weight	613 g	-001: 613 g -011: 696 g
Temperature range	-40°C to +50°C	
Degree of protection	IP 6K7, IP 6K9K	
Type approval	ECE-R10, ECE-R148 (2ZR 357 115-001), UKCA, ADR	
Mounting	Upright and pendant	
Connection	2.5 m ADR cable with open end	-001: 2.5 m ADR cable with open end -011: 4.0 m ADR cable with open end

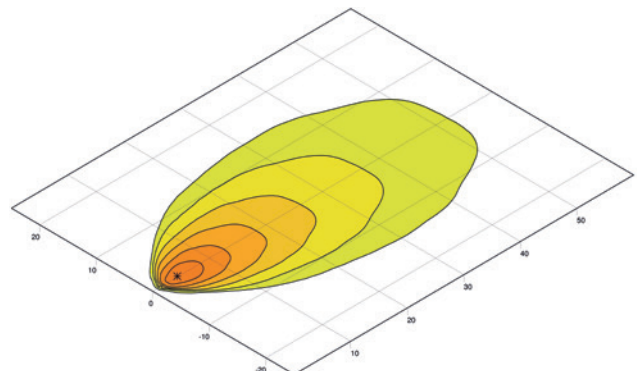
Dimensional sketch



LIGHT DISTRIBUTION




HELLA VALUEFIT SQ 1000 LED – close-range illumination



HELLA VALUEFIT SQ 1800 LED – close-range illumination

lux >= 0 1 2 4 8 16 32

PROGRAM OVERVIEW

Product Image	Description	Illumination	Part Number	VPE*
	HELLA VALUEFIT SQ 1000 LED, 2.5 m cable		2ZR 357 115-001	1
	HELLA VALUEFIT SQ 1800 LED, 2.5 m cable	Close-range illumination	1GA 357 116-001	1
	HELLA VALUEFIT SQ 1800 LED, 4 m cable		1GA 357 116-011	1
Recommended accessories (not included)				
SQ 1000 LED (2ZR 357 115-001)				
	Fuse, 12 V, 2 A		8JS 711 683-841	1
	Fuse, 24 V, 1 A		8JS 711 683-831	1
SQ 1800 LED (1GA 357 116-001 / -011)				
	Fuse, 12 V, 3 A		8JS 711 683-821	1
	Fuse, 24 V, 2 A		8JS 711 683-841	1
	Fuse, 48 V, 1 A		8JS 711 683-831	1

* Packaging unit