



BRIEF INFORMATION

LED light bars – LBX series

- Innovative light bar in state-of-the-art LED technology
- Low mounting position offers exceptionally large-surface illumination
- An alternative to conventional work lights

PRODUCT FEATURES

The new light bar series includes four work lights featuring an elongated design and offering various lengths and luminous intensities. Cooling fins on the back of the aluminium housing ensure the necessary dissipation of heat produced by the high-power LEDs.

The innovative lens technology of the LBX light bars generates homogenous illumination at both close and long range. The luminous intensity begins with the LBX 220 LED at 1,000 lumens and extends up to a powerful LBX 720 LED boasting then an effective light output of 5,500 lumens. In order to achieve optimal illumination, a low mounting height between 0.50 and 1.50 meters is recommended. In this way the light is evenly and extensively distributed throughout the working area and therefore ensures a significant improvement in nighttime working conditions.

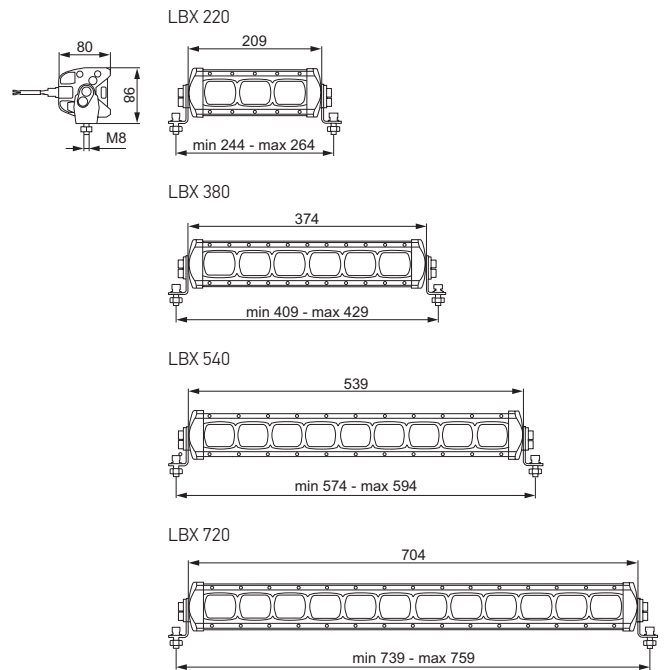
The longer variant models LBX 540 and LBX 720 offer the combination of wide-angle lenses for close range and narrow-angle lenses in the middle for long-range illumination. The perfect combination for extensive illumination in front of a vehicle.

TECHNICAL DETAILS

Technical data

Operating voltage/Rated voltage	9 – 33 Volt
Colour temperature	6,500 Kelvin
Housing	Aluminium
Mounting	Upright and pendant
Connection	DEUTSCH connector
Protection class	IP 67
Type approval	CE, ECE R10
Accessories	Including 2,000 mm adapter cable
Recommended mounting height	0.50 – 1.50 m

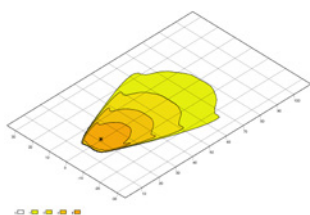
Dimensional sketch



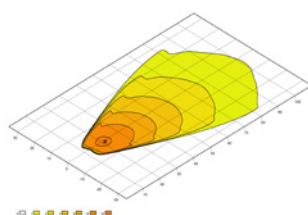
RANGE OVERVIEW

	1GE 360 000-002 LBX 220 LED	1GJ 360 001-002 LBX 380 LED	1GJ 360 002-002 LBX 540 LED	1GJ 360 003-002 LBX 720 LED
Close-range illumination	X	X	-	-
Long-range illumination	-	-	X	X
Power consumption	22 W	44 W	66 W	88 W
Light output (measured)	1,000 lm	2,000 lm	3,500 lm	5,500 lm
Bracket width	244 – 264 mm	409 – 429 mm	574 – 594 mm	739 – 759 mm
Weight	1,400 g	2,240 g	3,090 g	3,930 g
Other features	Combination illumination			

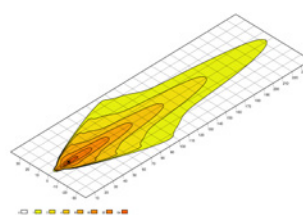
LIGHT DISTRIBUTION



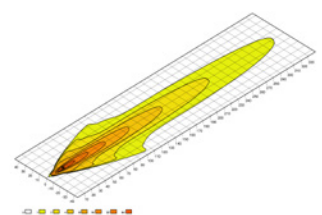
LBX 220



LBX 380



LBX 540



LBX 720