

PRODUCT NEWS

HELLA FMS Base and HELLA FMS Prime

- Work lamps for flat mounting on the vehicle wall
- Perfect close-range illumination all around the vehicle
- Homogeneous light distribution
- Increased safety with a non-protruding design at only 38 mm

PRODUCT FEATURES

HELLA FMS Base and HELLA FMS Prime are flat and compact LED work lamps with a practical design. The slim build is a perfect fit for applications in tight spaces and integrates perfectly with the appearance of the whole vehicle.

The FMS Base and FMS Prime were developed in a way that ensures great ground illumination when mounted to a vehicle's vertical wall. Thus providing an even spread of light in the work area. This feature is highly advantageous for municipal and emergency vehicles, along with heavy equipment where plenty of work is done in the perimeter of the vehicle. FMS Base and FMS Prime are also a great fit for marine applications, functioning as a deck lamp.

The FMS Base and FMS Prime provide two alternative lighting solutions, with FMS Prime providing a greater light output of 2,500 lumens.



HELLA FMS Base 1,200 lumens



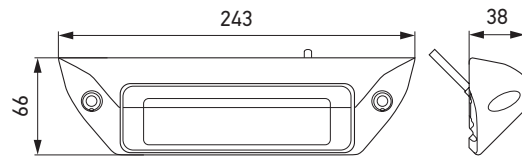
HELLA FMS Prime 2,500 lumens

TECHNICAL DETAILS

Technical data

Operating voltage / Rated voltage	9 – 32V DC
Light source type	LED
Power consumption	FMS Base: 14 W FMS Prime: 28 W
Light output	FMS Base: 1,200 lm FMS Prime: 2,500 lm
Colour temperature	6,500 K
Protection class	IP 6K9K, IP 6K8
Type approval	ECE-R10, RCM, ADR / GGVSEB
Housing	Die-cast aluminium, CoroSafe coating
Protection	Overheating and polarity reversal protection
Mounting	Flat surface mounting on the vehicle wall
Connection	500 mm cable
Dimensions	243 x 66 x 38 mm
Weight	600 g
Manufactured in	Austria

Dimensional sketch

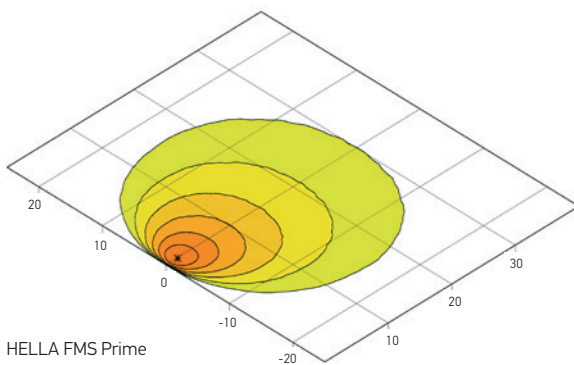
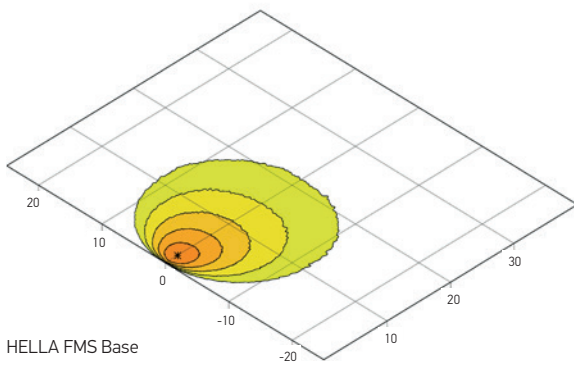


Housing colour



Black

Light distribution



lux >= 0 1 2 4 8 16

Description	Housing colour	Part number
FMS Base	Black	1GB 996 098-001
FMS Prime	Black	1GB 996 098-011

