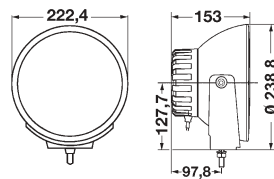




## BRIEF INFORMATION

Luminator Xenon auxiliary spotlight  
with integrated ballast



Upright mounting.  
Inclination angle: +/- 7°

### DELIVERY SCOPE

- Xenon spotlight
- Integrated ballast and D1S gas discharge lamp
- Connection cable
- Attachment material
- Mounting instructions

### PRODUCT CHARACTERISTICS

- Due to its external dimensions, it is particularly well-suited to trucks, large pick-ups and off-road vehicles
- Housing, holder and ring made of metal. Brilliant style – chrome design ring
- The integrated Xenon ballast in the headlamp housing and the fed-through cable connection make assembly easier.
- ECE type approved (E) for 12 and 24 volt vehicle electric systems
- Ø 22 cm
- Weight: 3,800 g

#### Luminator Xenon – Ø 22 cm:

Spotlight, 12 V (Ref. 37.5)  
Spotlight, 24 V (Ref. 37.5)

1F8 007 560-721  
1F8 007 560-731

### ACCESSORIES

Protective cap for Luminator Xenon\*

8XS 147 945-011

\* Protective caps are not legally authorised in some countries. Before use on public roads, please check with your competent government agency.

## RANGE OVERVIEW



### Luminator Compact Xenon – Ø 17 cm:

Xenon spotlight in black with chrome design ring incl. D1S gas discharge lamp and 12V ballast integrated into the housing. With ECE type approval (E1). Same lighting technology as its "big brother." Thanks to compact dimensions, it is ideal for pick-ups, medium-sized offroaders, SUVs, passenger cars and vans. Weight: 2,400 g.

Spotlight, 12 V (ECE Ref. 37.5)

1F3 009 094-311



### Luminator X Xenon – Ø 14.5 cm:

Xenon spotlight in black with chrome design ring incl. D1S gas discharge lamp and ballast integrated into the housing. Small and strong. With aluminium diecast housing. Perfect for quads, desert buggies, compact pick-ups, SUVs and passenger vehicles. With ECE type approval (E1). Weight: 1,300 g.

Spotlight, 12 V (ECE Ref. 37.5)

1F0 010 186-001

The Luminator Xenon auxiliary spotlight with integrated ballast is available in three sizes:

Ø 22 cm – Luminator Xenon

Ø 17 cm – Luminator Compact Xenon

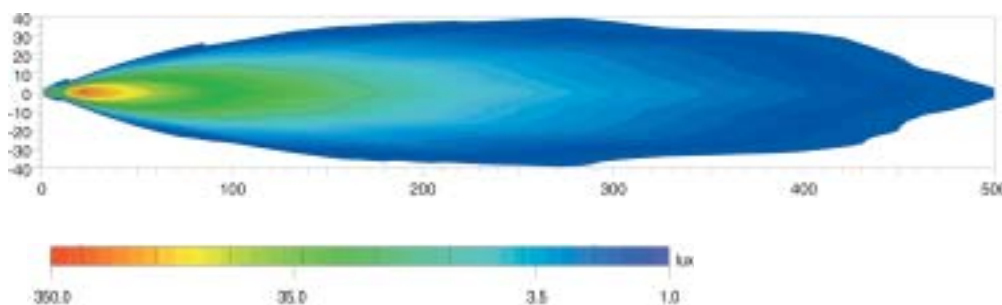
Ø 14.5 cm – Luminator X Xenon



## LIGHTING

### Luminator Xenon

Reference number 37.5



### Lux is a unit used to measure light.

It provides the luminous flux which hits a certain surface from the light source. For example, an office work station is supposed to be illuminated using at least 500 lux and at 1 lux the human eye can still read a newspaper without problems. The values under the Lux axis show where the respective illumination intensity is achieved in the light distribution diagrams.

### Ref 50, 40, 37.5, 17.5 and 12.5:

the reference number (Ref.) is a value referring to spotlights. According to the ECE regulation; the reference number may not exceed an upper limit of 75 per vehicle. The two values of the standard high beams (left and right main headlights) plus the value of other mounted spotlights are added. The value is entered on the cover lens of approved headlights.



### Experience light.

Auxiliary headlights from HELLA. The right light for every application. Test online now!

[www.hella.com/lightshow](http://www.hella.com/lightshow)

[www.hella.com/truck](http://www.hella.com/truck)

[www.hella.com/offroad](http://www.hella.com/offroad)

[www.hella.com/eliver](http://www.hella.com/eliver)