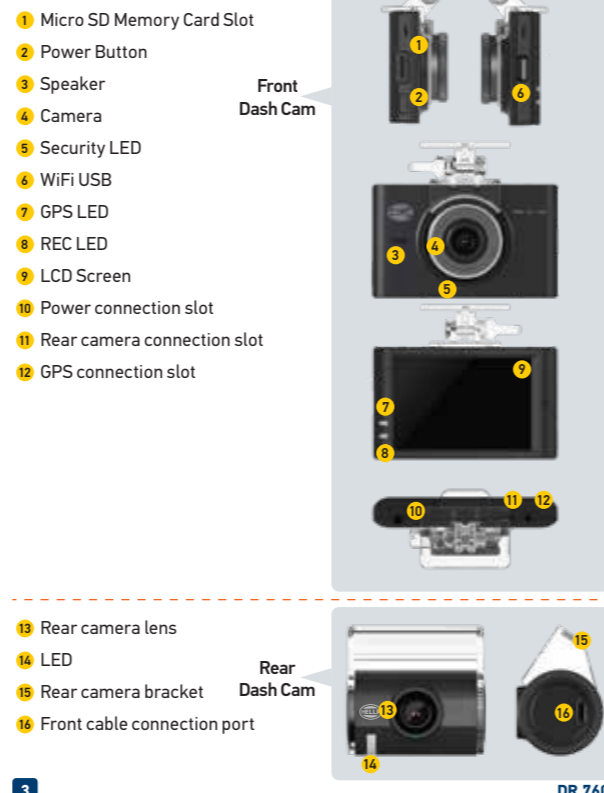




### PRODUCT OVERVIEW



### PACKAGE COMPONENTS

#### Basic Components



#### Optional Accessories:



2 DR 760

### SPECIFICATION

Image Sensor	Full HD CMOS Sensor
Audio Input	Built-in Microphone
Video Compression	H.264
Audio Compression	ADPCM
Resolution	Front Cam & Rear Cam Full HD 1080P (1920x1080)
FPS	Max. 30fps
Angle View	140 degrees
G-Sensor	Event recording by External Shock
Speaker	Operation Status alarm / Voice guidance
Wi-Fi	Connect to HELLA application via Wi-Fi dongle
External GPS (Optional)	Synched with Google map, Keep track of location and Speed
PC Viewer	Windows XP/7/8/10, Support 32Bit / 64Bit, Supported over OS X 10.7 64Bit. Synchronizing Google map with PC viewer is supported over Windows7 and explorer 10 as per Google's policy.
Power	DC 12V- 24V
Allowable current of providing fuse	3A
Operation temperature	-20°C-80°C
Humidity	10-95%
Dimension	Front camera : 100mm *61mm *33mm Rear Camera : 53mm *40mm *29mm

\*Improvement on Specifications and Components may change without further notice.

4 DR 760

### SD Memory Capacity and Recording Time

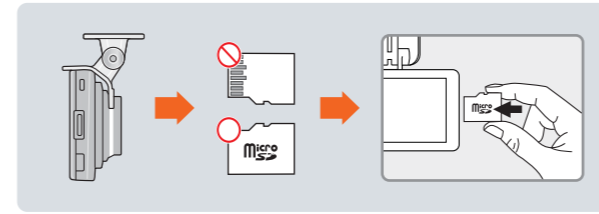
SD Card Capacity	1080P Video Recording Time
4GB	30 min
8GB	1 hrs
16GB	2 hrs
32GB	4 hrs
64GB	8 hrs
128GB	16 hrs
256GB	32 hrs

- Class 10 SD card recommended.
- It is recommended to change your SD card every 6 months.

### INSTALLATION

#### Memory Card Insert

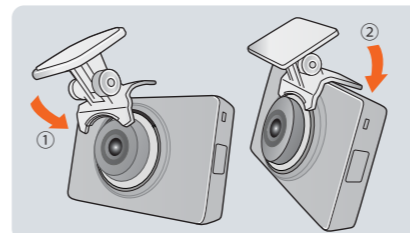
Please be fully aware before using Micro SD Memory



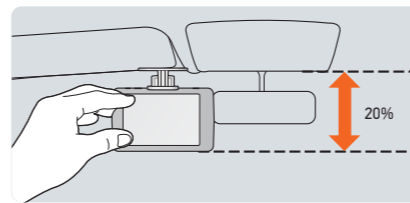
5 DR 760

#### Product Installation

- Assemble the Front cam with a bracket. Until the hook is located on right place with clicking sound according to the order (1,2)

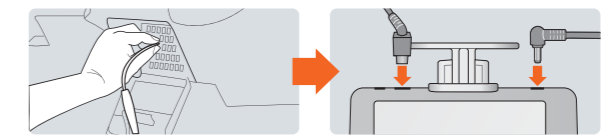


- Insert the memory card into memory card slot, and peel off the adhesive tape on the bracket.
- Install the front camera at the front windshield by adjusting the angle.

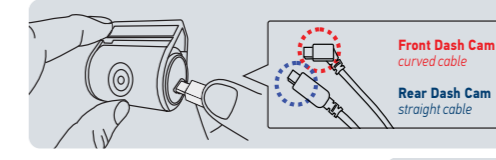


- Install the front camera so that it does not block the driver's view of vision.
- Front angle may be different depend on car brand & model. For general vehicle, install the front angle vertically.
- Connect direct power cable to fuse box terminal in the car. The connection terminal should be connected to the fuse that the current flows even if the ACC is shut off.

6 DR 760

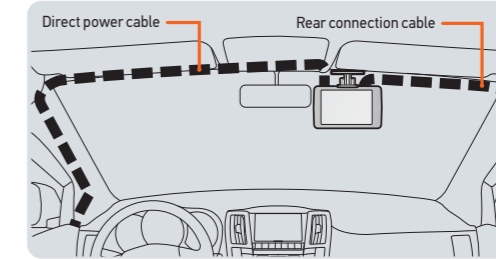


- Peel off the adhesive tape on the rear camera and place it on the rear windshields of the car.



- When installing the rear camera connection cable, be careful not to break the wire as showed picture.

- It is recommended that you install the power cable towards the driver seat and rear camera connection cable towards the passenger seat to prevent interference of car navigation GPS.



7 DR 760

### HOW TO USE LCD TOUCH SCREEN

#### How To Set LCD - Main Screen

The LCD screen will appear after voice guidance of "Start recording" starts.



- PLAY: Play recording video
- LCD OFF: The LCD screen turn off
- Live: Play the real time video
- Setup: Adjust the setting
- WiFi: Tap on WiFi button, then you will hear voice guide saying "standby mode for the registration". The registration is to be done within 2 minutes, otherwise it will be automatically disconnected.
- Power off: Shut down the system

#### How To Calibrate The LCD Touch Screen

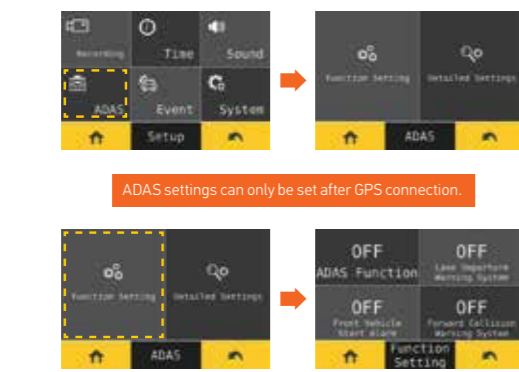


- You can calibrate the LCD touch screen as follows:
- [Setup] > [System] > [LCD] > [Calibration]
  - Follow the instructions on the screen and touch the center of the cross in order.

8 DR 760

### ADAS SETTING

By touching the ADAS button in the main setting menu, make the detail settings of the ADAS function.



- Function Setting**  
The ADAS function can be ON / OFF by touching the ON/OFF button. While ADAS function is ON, FVSA, FCWS and LDWS feature can be turned ON/OFF by touching each ON/OFF button.



- Detailed Setting**  
In detailed setting menu, the sensitivity of FCWS and LDWS feature can be adjusted in 3 levels: Low - Basic - High. And you can set the LDWS speed to 50km/h, 60km/h, or 70km/h so that the alarm will sound over the setting speed.

9 DR 760

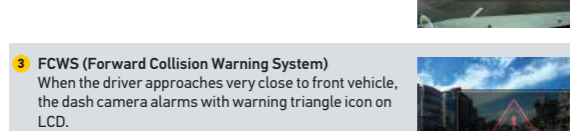
LDWS	Triggers the alarm when the vehicle is out of lane. This activates when over speed limit of setting speed.
FVSA	When the front vehicle departs away over 2M distance, the alarm will trigger.
FCWS	When the front vehicle distance is sharply decrease, the alarm will trigger.
LDWS speed	Setting the minimum speed detection (50km/h, 60km/h, 70km/h)
LDWS sensitivity	Setting the sensitivity (Low, Basic, High)
FCWS sensitivity	Setting the FCWS (Low, Basic, High)

#### ADAS Function

- FVSA, FCWS and LDWS icon can be seen only when the LCD screen is real time video.
- To improve recognition rate of ADAS, it is recommended to install the dash camera in the center.



- LDWS (Lane Departure Warning System)**  
As shown in the picture, when the lane is detected, the green point is displayed. If driver leave the lane, the red dot is displayed with alarm.  
Note: The Lane Departure Warning System will work if it is above the setting speed.



- FVSA (Front Vehicle Start Alarm)**  
It activates when the stopped front vehicle departs away over 2 meters. The icon will appear on the LCD screen with a beep when the distance from the front car exceeds 2M.



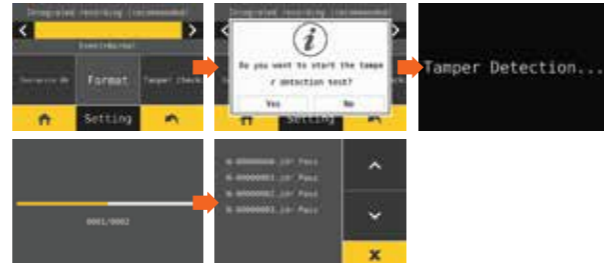
- FCWS (Forward Collision Warning System)**  
When the driver approaches very close to front vehicle, the dash camera alarms with warning triangle icon on LCD.

10 DR 760

### TAMPER CHECK / PARKING MONITORING MODE

#### Tamper Check

The inspection will start after touching TAMPER CHECK button. And the system will be rebooted when you touch the button in the screen.

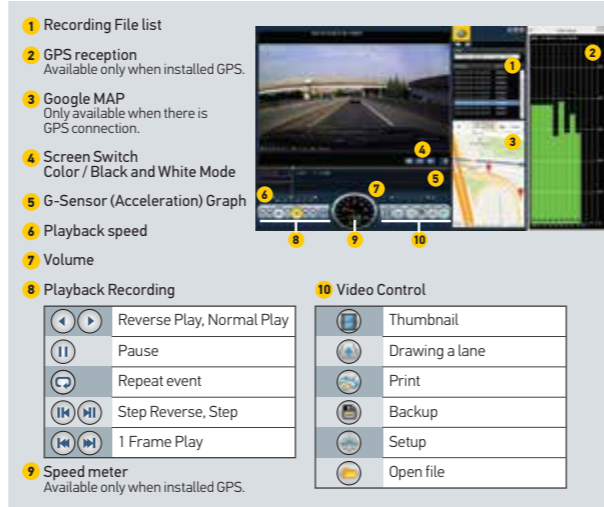


#### Park Monitoring Mode (Smart Motion Detection)

- When parking mode is ON and motion detection is OFF, the dashcam continuous records with low image resolution (10 fps)
- When parking mode is OFF, the dashcam continuous records with high image resolution (30 fps)
- When parking mode is ON and motion detection is ON, recording starts when there is movement detected (10 fps)

11 DR 760

### PC VIEWER



#### How to check the G-sensor data



- When play the video, you can check the G-sensor data of X-axis (direction), Y-axis (left and right), Z-axis (height).

12 DR 760

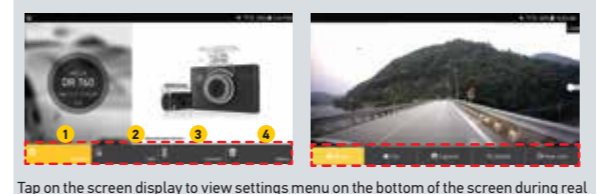
### SMARTPHONE CONNECTION

#### How to connect - Android

- Run HELLA app icon after installation to smart device.
- The screen of HELLA app is horizontal mode. The message to guide you to register dash cam will show up at the first time. If select "No" to terminate the application or select "Yes" to go through registration page.
- It will search and display registered dash cams/SSID and model name.
- Press the WiFi registration button of device, there will be voice guidance "Stand-by mode for the registration" and select the product on the list that you want to register by tapping the "Search" button. Press the "Search" button if you want to search the device again. The registration has to be done within 2 minutes.
- In the case where registration is not active or connection is failed in standby mode, voice guidance will appear and you will have to press the WiFi button to activate the registration mode again. (If re-registering, it automatically registers last installed smartphone)
- Registration process is completed as right picture shown. User can modify dash cam name as desired and this can be useful when the user needs several product connections.

13 DR 760

#### Main Menu/ Real-Time Image



- Setting** Tap on the setting button to change settings. Once setting changes are saved, the app is rebooted.
- Add** Move to registration page.
- Connect** Check the real time recording video after registration.
- Delete** Delete registered dash cam.

#### How to connect - Apple iOS

- Run HELLA app icon after installation to Smart phone.
- Turn on Wi-Fi function of Smart phone.
- Select "HELLA\_BB\_DR760\_XXXXX" in the WiFi list.
- Put [qwertyuiop] in the password window and touch the "Join" button.
- Press the WiFi registration button on the device to activate register standby mode. (Voice guidance: "Stand-by mode for the registration")

14 DR 760

### PRECAUTION

- Press the current playing video in bottom menu, user can check real time video.
  - In the case where registration is not active or connection failed in standby mode, voice guidance will appear and you will have to press the Wi-Fi button to activate registration mode again. (If re-registering, it automatically registers last installed smartphone)
- Front/ Rear Real-Time Image
- Connect** Check real time recording.
  - Search** Play recording video files in list which are organized on the timeline.
  - Settings** Setup the dash cam by smartphone. The dash cam will be rebooted upon pressing save button after finishing set up.
  - Help** Check the Wi-Fi setting help page.
- When it is playing video, Dash Cam will not be recorded for stabilization. After it is changed to "live mode", the recording will be started automatically.

15 DR 760

### PRECAUTION

- Voltage Issues**
  - Please use recommended/stable voltage only. Otherwise, improper use may cause product failure and fire accidents, explosion or damage to the vehicle.
- Installation**
  - Do not mount dash cam on area where it obstructs the driver's view or the operation of the vehicle itself.
  - Do not install the device on colored or heavily tinted windshield as it may affect video quality.
- Usage and General Management**
  - Image quality could deteriorate when the temperature of the device exceeds the optimal operating temperature.
  - Please check whether the device is functioning before driving a car.
  - Do not remove SD card or turn off the power cable during firmware update. It may cause malfunction or loss of data.
  - For safety, do not operate dash cam while driving.
- Memory Card and Precaution**
  - There is the lifetime of memory card for rewriting which is expendable product. Periodic care is required.
  - The device must be turned off when ejecting the memory card. It may cause loss of data or malfunction of the memory card when user forces switch-off while it is running.
  - Video data may be damaged due to a defective memory card or short lifetime of memory card.
  - Genuine memory card is recommended to avoid error, incompatibility or malfunction of the product.
  - Please check your memory card once every month for maintenance and stability. It is recommended that you check memory card through SD master program (www.sdcard.org).
  - Time required may vary depending on the memory capacity to use SD card if it is the first time of using it. Please do not remove the SD card while the device is running or when it is being turned off.

### DISCLAIMER

The device is not intended to be used for illegal purposes and/or surveillance. It shall not be used in any form as evidence for claim purposes.

Some countries prohibit drivers from mounting anything on the windshield, or restrict mounting to specific areas of the windshield. It is the owner's responsibility to mount the device in compliance with local laws.

Errors may occur depending on the surrounding environment and the voltage of the car.

Please check date/time if the device is not used for a long period of time. If user doesn't use dash cam for a long time, dash cam would be initialized except for connecting with External GPS.

Though this product records and saves footages in the event of accident, it does not guarantee every single accident scenes are fully recorded.

Accident scenes may not be recorded if there is minor impact on the vehicle as the impact sensor may not be able to detect.

HELLA is not liable/responsible for non-recorded event, missing files, etc.

In the event that the product is used as proof of accident, HELLA will not be responsible for any gain or loss caused by the accident.

16 DR 760