



LUMINATOR **LED**

# PRODUCT NEWS

## Luminator 3.0 LED Driving Lamp

Overvoltage protection  
with high EMC

Patent protected design

Heat sink for effective  
thermal management

Energy efficient

Water resistant

Power supply 9-32 V

LED position light

Vibration resistant and environmental  
protection for extreme conditions

### PRODUCT FEATURES

- Auxiliary driving lamp with state-of-the-art LED technology and futuristic looks
- Position light with EdgeLight technology
- Clear white (5900K) LED light
- Unique front mounted heat sink with large effective area for effective cooling. Resistant to dirt build-up and reduction in cooling performance
- High-quality, robust full metal housing and zinc plated die-cast mounting bracket
- Tool-free precision tilt angle adjustment
- 3 year warranty
- ECE type-approved (ECE R112 high beam, ECE R7 position light, ECE R10 EMC)
- Weight 2.7kg
- Multi-voltage: suitable for 12V and 24V rated voltage
- Power consumption and input current:
  - 2.4 W position light and 14.5 W high beam at 12V DC
  - 5 W position light and 14.5 W high beam at 24V DC
- Replaceable lamp insert (LED electronics, reflector and lens) available\*

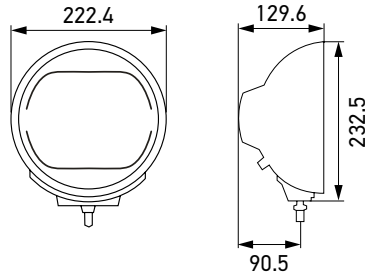
\*Sold separately. Part Number: 1F8 241 400-011 (ECE Ref. 25) 1F8 241 429-011 (ECE Ref. 50). Suitable for upgrading existing Rallye 3003 and 4000 series halogen driving lamps.



Chrome housing

Satin black housing

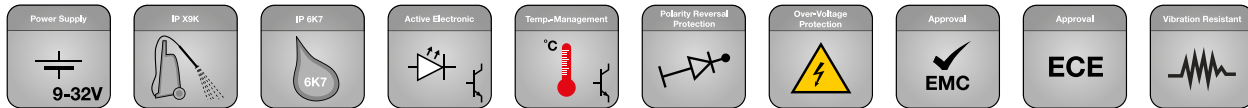
- LED high-beam driving lamp with integrated LED position light
- Supplied with 'flying lead' connection
- Pre-assembled unit, ready to mount with tool-free precision tilt angle adjustment
- Multi-voltage 9 - 32V DC supply (12 / 24V DC vehicles)
- Ingress protection rating: IP X9K, IP 6K7
- Complies with EMC requirements for ADR / ECE R10



Upright mounting.  
Tilt angle +/- 7°

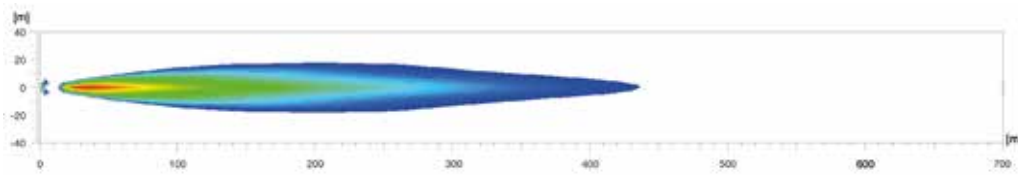
Description	Part number
Luminator 3.0 LED High-Beam Driving Lamp, Satin Black, Wide Beam (ECE Ref. 25) with LED position light	1F8 016 560-001
Luminator 3.0 LED High-Beam Driving Lamp, Satin Black, Narrow Beam, (ECE Ref. 50) with LED position light	1F8 016 560-011
Luminator 3.0 LED High-Beam Driving Lamp, Chrome, Wide Beam (ECE Ref. 25) with LED position light	1F8 016 560-021
Luminator 3.0 LED High-Beam Driving Lamp, Chrome, Narrow Beam (ECE Ref. 50) with LED position light	1F8 016 560-031
<b>Spare parts*</b>	
Luminator 3.0 LED Replacement Insert, Wide Beam (ECE Ref. 25) with LED position light	1F8 241 400-011
Luminator 3.0 LED Replacement Insert, Narrow Beam (ECE Ref. 50) with LED position light	1F8 241 429-011
<b>Accessory</b>	
Luminator 3.0 LED Driving Lamp Housing, Chrome, with external connector and connecting cable	9BG 150 117-021

\*Also suitable for upgrading existing Rallye 3003 and 4000 series halogen driving lamps

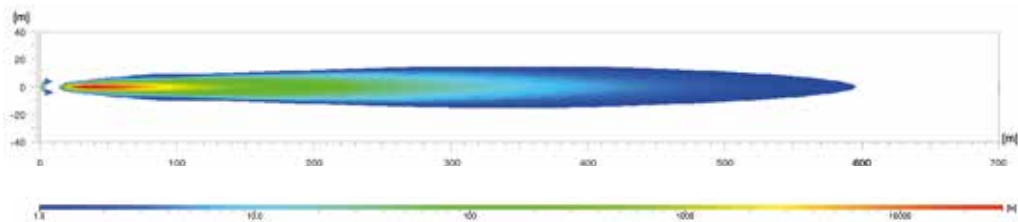


## LIGHT DISTRIBUTION

### 1) Luminator LED with reference number 25



### 2) Luminator LED with reference number 50



The light distribution shows two active driving lamps in each case.

### Lux is the unit of illuminance.

It indicates the luminous flux that meets a specific surface from the light source. An example of this is that an office should be illuminated with at least 500 Lux and the human eye can still read a newspaper without any problems at 1 Lux. The values under the Lux bar indicate where the appropriate illuminance is achieved on the light distribution diagrams.

### Ref. 25, 50:

The reference number (Ref.) is a value that refers to the light intensity of lamps illuminated in high-beam operation. Under ECE regulations, this reference number may not exceed the upper limit of 100 per vehicle. This figure includes the two values for the standard high beam (left and right headlamp) plus those of any other high-beam auxiliary lamps that are mounted. The appropriate value is engraved on the cover lens of each approved driving lamp.