



# BRIEF INFORMATION

## Heavy Duty Wiper

- Built tough
- Longlife performance

## PRODUCT FEATURES



### TECHNOLOGY TRENDS

- Professional performance
- Increasing sizes
- Specific features: Spray bars

### CHALLENGES

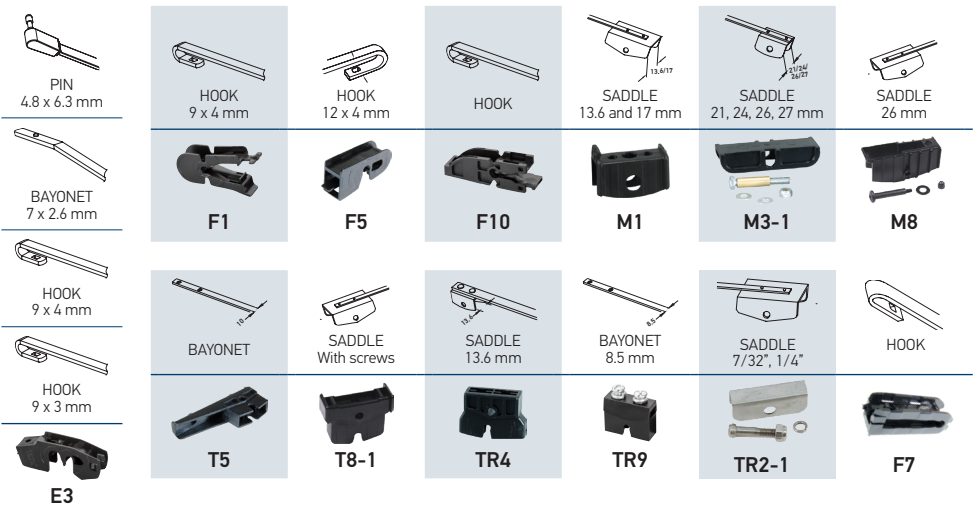
- Total cost of ownership
- Right range to cover latest vehicles

### SOLUTION (BY HELLA)

- Complete range
- Extensive coverage
- Sets with spray bars for specific applications

Large, robust vehicles require equally robust wiper blades. That's why only high-quality steel was used for the HELLA wiper blades. In addition, the blades have been specially coated for a longer lifetime, meaning that the wiper blades do not need to be changed so often.

# DETAILS



LASTING  
PERFORMANCE



HIGH QUALITY  
STEEL FRAME



SPRAY BAR  
INCLUDED

# PRODUCT RANGE

Short Code	Length inch	Adapter	Part number
HD20	20"	E3, B, A2-1, TR9	191398201
HD22	22"	E3, B, A2-1, F1, TR4, T5	191398221
HD24	24"	F5, F10, T8-1, T9	191398241
HD26	26"	F5, F10, T8-1	191398261
HD28	28"	F5, F10, T8-1, G1, F9	191398281
HD32	32"	M, M1, M7, M8	191398321
HD36	36"	M2, M3-1, M6	191398361
HD40A	40"	M2, M3-1, M6	191398401
HS40B	40"	F7	191398402
HDT15	15"	TR2-1	358178151
HDT16	16"	TR2-1	358178161
HDT18	18"	TR2-1	358178181
HDT20	20"	TR2-1	358178201
HDT22	22"	TR2-1	358178221