



BRIEF INFORMATION

Electromotive actuators (High Force)

- Electrical locking /unlocking and closing
- Very high positioning forces
- Robust and compact design
- Interference suppression Class 3
- Universal interface for Bowden cable
- For universal use

PRODUCT FEATURES

Application

The actuator is particularly suitable for locking and closing applications where High Forces are required.

Examples include:

- Large locks and
- Large flaps
- Seat release

Where a Bowden cable is used, the actuator can also work without being attached to the vehicle body, since it is fixed to the application by means of the Bowden cable sleeve. The actuator can be embedded in a foam body for the purpose of noise insulation.

Design and function

This electromotive actuator is driven by a DC motor with rotary output. The actuator is operated by applying a voltage via a 2-pin connector with the contacts „+“ and „Ground“. It is reset by simply reversing the polarity or, alternatively, automatically via a spring. Direction of rotation and running time are defined by the control unit. The actuator can be attached to three connection points.

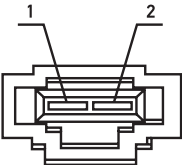
TECHNICAL DETAILS

Technical data		
Article number	009424781	009424791 009424777 ²⁾
Function	Electrical rotation (left), return by spring (right)	Electrical rotation to right and left
Mainspring reset	Available	None
Weight	181 g	
Rated voltage	12 V	
Voltage range	9 – 16 V	
Maximum current consumption (stall current)	≤ 10.5 A	≤ 6 A
No-load/idling current	≤ 1.5 A	≤ 0.4 (≤ 0.45) A
Speed at rated load	$U_p / RT \geq 41$ (≥ 39) rpm	$U_p / RT \geq 12$ (≥ 10) rpm
Rated torque	150 Ncm	300 Ncm
Functional angle	0° to 198°	
Tensile path	Approx. 45 mm	
Rated speed (at rated load and room temperature)	32 min ⁻¹	15 min ⁻¹ at RT and 13 V
Manual adjustment	None	
Thermal overload protection	Available	Not available
Operating temperature	-40°C to +85°C	
Lifetime	8,000 switching cycles	50,000 switching cycles
Conducted electromagnetic interference	< - 75 V	
Interference suppression (in all ranges)	Intensity level 3	
Protection class	IP 5K0	
Vibration resistance (IEC 68-2-64)	3 g _{eff.}	
Housing material (top side)	PP-GF30	
Housing material (bottom side)	PP-GF30	
Pin coating	Tin	
Mating connector ¹⁾	AMP C1355390	

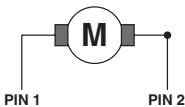
¹⁾ These accessories are not included in the scope of delivery. Available from TE Connectivity.
²⁾ As -791 but without shaft, without cable sheave and without metal clip.

Pin assignment / electrical connection

009424781



Electrical rotation to the left
Reset by spring to the right



PIN 1

PIN 2

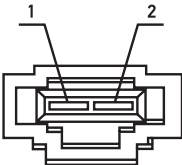
+

-

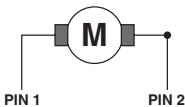
0

0

009424791 / -777



Electrical rotation to the right
Electrical rotation to the left



PIN 1

PIN 2

+

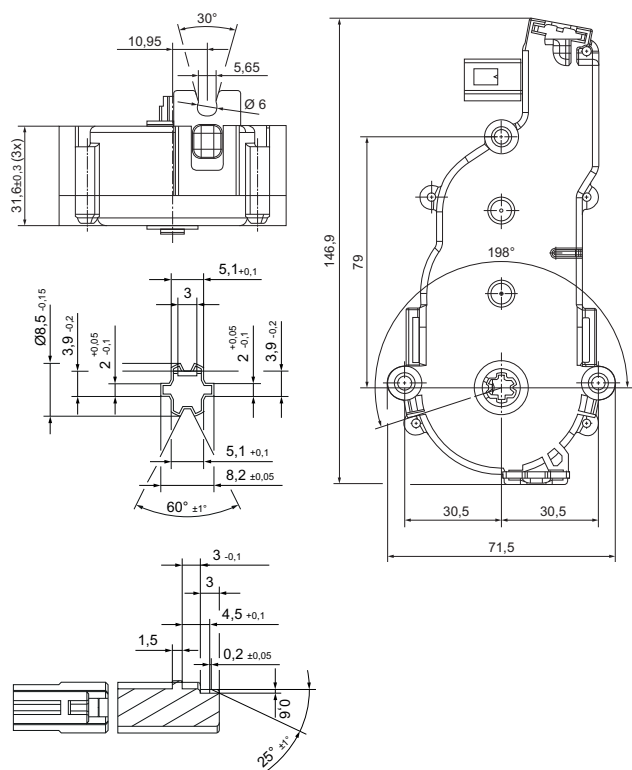
-

-

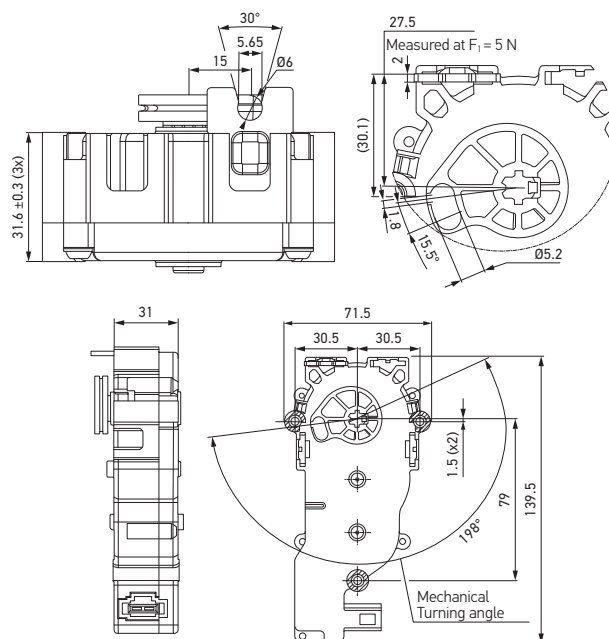
+

Technical drawing

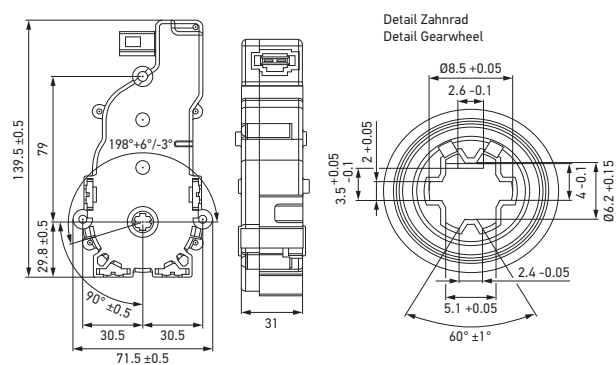
009424781






009424791



009424777



PROGRAM OVERVIEW

Product picture	Function	Torque	Article number	Packaging unit
	Retraction via spring, extension electric	150 Ncm	009424781	1
	Retraction and extension electrical	300 Ncm	009424791	1
	Retraction and extension electrical, without shaft, without cable sheave and without metal clip	300 Ncm	009424777	70