



PRODUCT INFORMATION

HELLA 7-WAY X 4-WAY TRAILER SOCKET (SAE J2863 & J1239)

- One connector for both unbraked and braked trailers—no adapter required.
- Direct OE replacement with OE-grade construction
- Simple plug and go installation on tow-ready vehicles with a USCAR electrical connector—no splicing required.
- Proudly manufactured in North America, ensuring consistent quality, faster supply, and strict adherence to OE-grade production standards.

PRODUCT FEATURES

Two Connections. One Solution. Zero Hassle

Our Multi-Connector Assembly combines a 7-way RV blade and 4-way flat trailer connection into one convenient unit, eliminating the need for separate adapters. Designed for durability and ease of installation, this connector offers superior sealing, impact resistance, and OEM-grade performance. With included mounting hardware and compatibility with USCAR electrical connectors, it's the ultimate trailer connection solution for tow-ready vehicles.

FEATURES & BENEFITS

- **All-in-One Design** – Supports both 7-way and 4-way trailer plugs; no adapter required.
- **Easy Installation** – Includes mounting bracket and self-tapping screws for vehicles without bumper cut-outs.
- **Watertight Protection** – Molded seals and ISO IP ratings of: IPX7/IPX9K at vehicle connection, IPX4/IPX5 at trailer connection.
- **Self-Draining Design** – Prevents water accumulation.
- **Durability Tested** – Impact and corrosion resistant; meets OEM standards.
- **Optimized Terminals** – Double-plated for corrosion resistance; stronger design prevents fatigue over lifetime.
- **OE Grade Quality** – Direct replacement for many vehicles; compliant with SAE J1239 and SAE J2863.
- **Plug-and-Go Convenience** – Simple installation on vehicles with existing USCAR connectors and towing harness.
- **4-Way Connector (SAE J1239)** – For all types of trailers not requiring braking up to 10,000 pounds.
- **7-Way Connector (SAE J2863)** – For all types of trailers greater than 10,000 pounds that require braking.

SAE J2863 7-WAY SOCKET

FUNCTIONS:



Contact No.	Function
1	Left turn/stop
2	"-" Ground
3	
4	Electric brakes
5	Right turn / stop
6	"+" Battery
7	Running lights

Contact No.	Function
1	Ground
2	Tail and license lamp circuit
4	Left turn and stop circuit
5	Right turn and stop lamp circuit

PRODUCT

Part Number	Description
001943131	HELLA 7-Way x 4-Way Trailer Socket (SAE J2863 & J1239)p

TECHNICAL INFORMATION

Technical data	
Rated voltage	12V
Operating voltage	12V
Number of Connector Poles	Combo 7 Pole & 4 Pole
7 Pole Trailer Functions	Left Turn / Stop, Right Turn / Stop, Tail Lights, Reverse Lights, Electric Brakes
4 Pole Trailer Functions	Left Turn / Stop, Right Turn / Stop, Tail and Licence Lamp Circuit
Material	Fiber-reinforced, heavy-duty plastic
Weight	398g
Temperature range	-40C to +85C
Protection class	IPX7/IPX9K
Type approval	SAE J1239 & SAE J2863
Mounting	Snap in OE replacement or self install bracket assembly
Connection	Compatible with USCAR connectors and towing harness
Mounting specification	Mounting Bracket & Screws

PRODUCT IMAGES



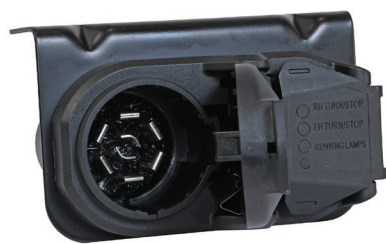
Closed Lid



Left view



Right view



Open Lid



Front view



Rear view

OE CROSS REFERENCES

OE	Reference	OE	Reference
CHRYSLER	56055632AA	MOPAR	56055632AB
CHRYSLER	56055632AB	MOPAR	56055632AC
CHRYSLER	56055632AC	MOPAR	68573359AA
CHRYSLER	68573359AA	MOPAR	68014986AA
CHRYSLER	68014986AA	MOPAR	68014986AB
CHRYSLER	68014986AB	RAM	56055632AA
DODGE	56055632AA	RAM	56055632AB
DODGE	56055632AB	RAM	56055632AC
DODGE	56055632AC	RAM	68573359AA
DODGE	68573359AA	RAM	68014986AA
DODGE	68014986AA	RAM	68014986AB
DODGE	68014986AB	FORD	FU5Z14489A
JEEP	56055632AA	FORD	MU5T13N406BC
JEEP	56055632AB	FORD	MU5Z14489A
JEEP	56055632AC	FORD	MU5Z14489C
JEEP	68573359AA	FORD	9U5Z14489MAA
JEEP	68014986AA	GM	22799842
JEEP	68014986AB	GM	23404450
MOPAR	56055632AA	GM	84955755

APPLICATION EXAMPLES



HELLA Automotive Sales, Inc.

611 Highway 74 S, Suite 102

Peachtree City, GA, 30269

Tel.: +1 (877) 224-3552

Fax: +1 (770) 631-7574

www.hella.com/us/