



PRODUCT INFORMATION

HELLA 4-WAY TRAILER SOCKET (SAE J1239)

- Meets SAE J1239 standard for tail, stop, and turn signal lamps
- Light duty trailers up to 10,000 pounds
- Self-closing cover to protect against the elements
- Rated watertight per ISO IPX7 and IPX9K
- Easy to install on cars, trucks, and RVs using the provided mounting bracket and pigtail wire assembly

PRODUCT FEATURES

Reliable Connectivity for Every Haul

Our 4-Way Trailer Socket, engineered to meet SAE J1239 standards, delivers dependable performance for light-duty trailers up to 10,000 lbs. Designed for 12V systems, this rugged connector ensures secure power transfer to essential lighting circuits—tail, stop, and turn signals—keeping your trailer visible and safe on the road. Built with precision-fit contacts and a durable housing, it resists corrosion and harsh weather, guaranteeing long-lasting reliability. Rated watertight per ISO IPX7 and IPX9K, this socket withstands immersion and high-pressure spray, while its self-closing cover protects against water, dirt, and other corrosive elements. Easy to install and universally compatible, this socket is the smart choice for hassle-free towing.

FEATURES & BENEFITS

- **All-in-One Design** – Supports 4-way trailer plugs; no adapter required.
- **Easy Installation** – Includes mounting bracket and self-tapping screws for vehicles without bumper cut-outs.
- **Watertight Protection** – Molded seals and ISO IP ratings of: IPX7/IPX9K at vehicle connection, IPX4/IPX5 at trailer connection.
- **Durability Tested** – Impact and corrosion resistant; meets OEM standards.
- **Optimized Terminals** – Double-plated for corrosion resistance; stronger design prevents fatigue over lifetime.
- **OE Grade Quality** – Direct replacement for many vehicles; compliant with SAE J1239.
- **4-Way Connector (SAE J1239)** – For all types of trailers not requiring braking up to 10,000 pounds.

SAE J1239 4-WAY SOCKET

FUNCTIONS:



Contact No.	Function	Wire Size	Current Rating	Core insulation	Length (in./mm)
1	Ground	16 AWG	20 Amps	white	7.8 in / 200 mm
2	Tail and license lamp circuit	18 AWG	15 Amps	brown	7.8 in / 200 mm
4	Left turn and stop circuit	18 AWG	15 Amps	yellow	7.8 in / 200 mm
5	Right turn and stop lamp circuit	18 AWG	15 Amps	green	7.8 in / 200 mm

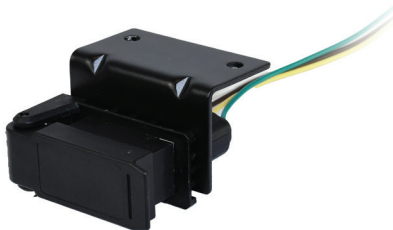
PRODUCT INFORMATION

Part Number	Description
001943121	HELLA 4-Way Trailer Socket (SAE J1239)

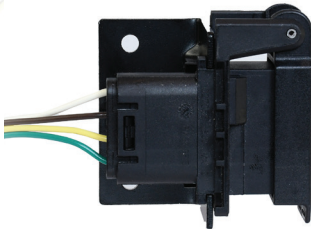
TECHNICAL INFORMATION

Technical data	
Rated voltage	12V
Operating voltage	12V
Number of Connector Poles	4 Pole
4 Pole Trailer Functions	Left Turn / Stop, Right Turn / Stop, Tail and Licence Lamp Circuit
Material	Fiber-reinforced, heavy-duty plastic
Weight	128 g
Temperature range	-40C to +85C
Protection class	IPX7/IPX9K
Type approval	SAE J1239
Mounting	OE replacement or self install bracket assembly
Connection	7.8 inch lead wires
Mounting specification	Mounting Bracket & Screws

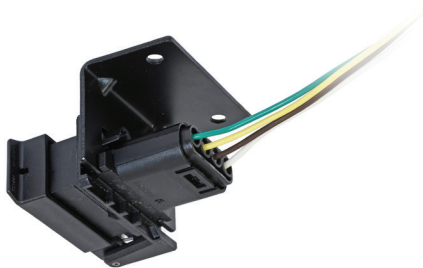
PRODUCT IMAGES



Closed Lid



Bottom view



Right view



Open Lid



Rear view



Front view

APPLICATION EXAMPLES



HELLA Automotive Sales, Inc.

611 Highway 74 S, Suite 102

Peachtree City, GA, 30269

Tel.: +1 (877) 224-3552

Fax: +1 (770) 631-7574

www.hella.com/us/