



BRAKE FLUIDS



Active Braking Safety

<https://hella.mypartfinder.com/>



CONVINCING QUALITY. PERFECTLY MATCHED. **OUR FLUIDS FOR ACTIVE BRAKING SAFETY**

As one of the leading aftermarket suppliers of products in the areas of wear parts, brake hydraulics, fluids and chemicals as well as accessories, we consistently focus on technological advances, long-term innovation and the highest quality.

The brake system is a complex system in which many elements have to work together smoothly so that they function safely even in extreme situations.

The brake fluid is an important part of this system because it transfers the pedal force to the brake system through hydraulic pressure. To perform this function, the brake fluid must conform to clearly defined automaker requirements and its composition must be perfectly coordinated to the characteristics of various braking systems. Brake fluids from HELLA do not just meet these conditions perfectly, they far exceed them.

The brake fluid range from HELLA is sensibly supplemented by brake cleaner and mounting paste. Both of these quality products are tried-and-tested, easy to use, and ideal for optimizing the braking and road safety of a vehicle.







GREAT PRODUCT RANGE. OPTIMAL PERFORMANCE.

HELLA BRAKE FLUIDS - BETTER THAN THE STANDARD

Brake fluid plays a key role in the reliable and constant transmission of braking force and performance. In order for it to fulfill its function, the effectiveness of the brake fluid must never be impeded under any circumstances.

Regardless of the category, each brake fluid must have very specific features to ensure proper functioning in any situation. Key criteria for this include the dry boiling point, wet boiling point and viscosity. To ensure that brake fluids meet the safety-related requirements with respect to this criteria, specific minimum standards have been specified in accordance with the DOT ("United States Department of Transportation") classification.

All of our brake fluids far exceed the legal values and provide maximum performance and safety, even in extreme situations.





OPTIMUM BRAKING PERFORMANCE. MAXIMUM SAFETY.

HELLA BRAKE FLUIDS

DOT 3



The origin of modern brake fluids. Primarily used in brake systems without complex safety components.

Part Number	Size	Carton Quantity	Number of Layers	Boxes Layer	Boxes / Pallet	Bottles / Layer	Bottles / Pallet	Pallets / 20 ft container	Bottles / 20 ft container
355360142	500 ml	24	5	10	50	240	2,400	10	12,000
355360072	1 L	10	4	17	68	170	1,360	10	6,800

DOT 4



The common standard for most vehicles today.

355360012	500 ml	24	5	10	50	240	2,400	10	12,000
355360022	1 L	10	4	17	68	170	1,360	10	6,800
RACING DOT 4									
355360XXX	500 ml	10	5	24	120	240	2,400	10	12,000

DOT 4 LV



Specially formulated to work with Electronic Stability Program (ESP) systems and to operate effectively over a wide temperature range. Suitable for all ESP and other conventional brake systems using Glycol Ether based Brake Fluids.

355360052	1L	10	4	17	68	170	1,360	10	6,800
-----------	----	----	---	----	----	-----	-------	----	-------

DOT 5.1



Similar boiling point to DOT 4 racing fluids, a glycol-base, and a color scheme that ranges from light amber to translucent. Basically a DOT 4 brake fluid, based on chemical makeup, that can meet DOT 5 regulations. Can technically mix with both DOT 3 and DOT 4 fluids.

355360082	500 ml	24	5	10	50	240	2,400	10	12,000
355360092	1 L	10	4	17	68	170	1,360	10	680

DOT 5.1 EHV



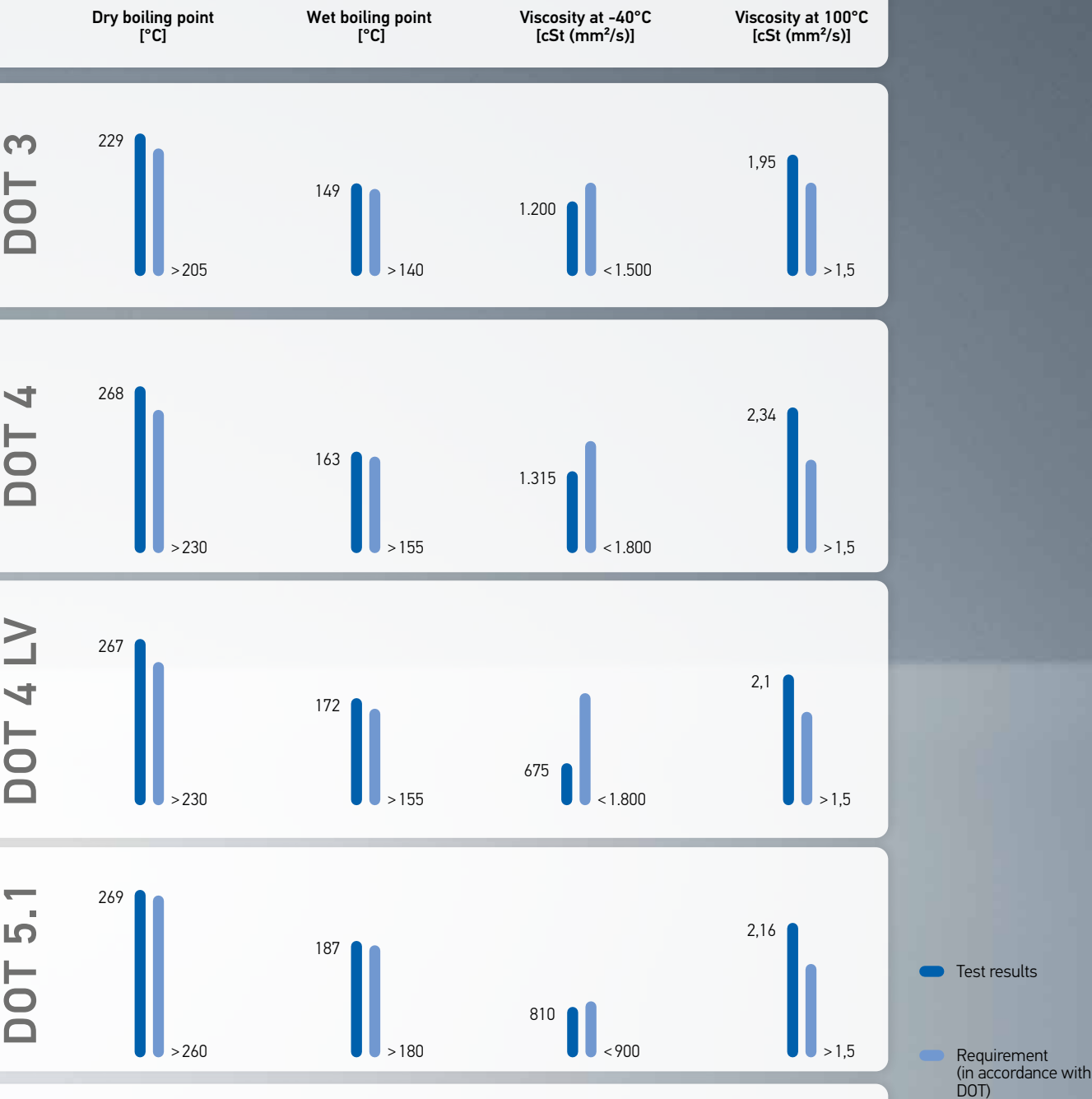
HELLA DOT 5.1 EHV street brake fluid is specially made for the use in Electric and Hybrid cars. This premium DOT 5.1 fluid has an enhanced corrosion resistance.

355360XXX	500 ml	24	5	10	50	240	2,400	10	12,000
355360XXX	1 L	10	4	17	68	170	1,360	10	680

* Minimum purchase = 20 container/10 pallets



HELLA BRAKE FLUIDS TEST RESULTS





DRY BOILING POINT

This is the boiling point of new brake fluid without water content. When braking, kinetic energy is converted into heat. The brake fluid absorbs part of this heat and, to keep the heating under control in each phase and to prevent the formation of gas bubbles that can cause a brake failure, the boiling point must reach a certain level.



WET BOILING POINT

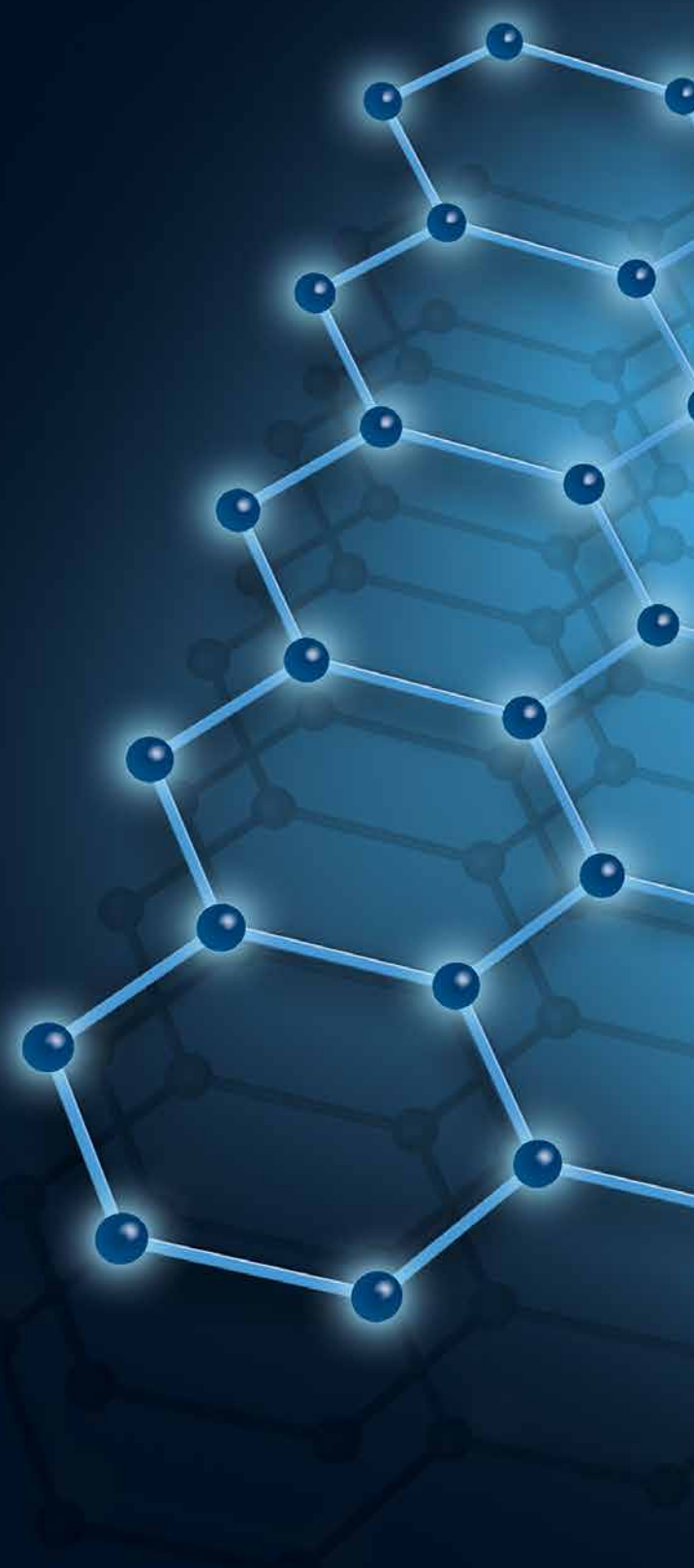
In addition to the heat, the brake fluid also absorbs humidity. This results in an increase in the water content and a reduction in the boiling point in aged brake fluid or brake fluid that has been used over a long period of time.

This wet boiling point is generally specified for brake fluids with a water content of around 3.5% (relative to the total amount).



VISCOSITY

Viscosity is a measure of how easily a fluid flows. The greater the viscosity, the thicker the fluid (flows poorly); the lower the viscosity, the thinner the fluid (flows more easily). When temperatures rise, the viscosity of most fluids decreases. The viscosity is particularly relevant for brake fluids intended for modern vehicles with ESP and ABS (DOT 4 LV and DOT 5.1) because these vehicles require a fluid with a relatively high viscosity, even when temperatures are low.



CHANGE INTERVALS

HELLA recommends observing and following the information provided by the vehicle manufacturer.

The following replacement intervals serve as a guideline value for ensuring optimal brake performance and safety:

- DOT 3: every 12 months
- DOT 4, DOT 4 LV, and DOT 5.1: every 24 months

In addition to this, the brake system – and the brake hoses in particular – should be checked for leaks regularly during service inspections.

MIXING

HELLA generally recommends using the brake fluid defined by the automaker and to avoid mixing brake fluids with different DOT specifications.

MOUNTING PASTE

In order to ensure safe functioning in the long term, the brake system must undergo regular maintenance.

During maintenance, all relevant mechanical parts should be greased with a temperature-resistant, non-metallic, permanent lubricant. When doing so, always ensure that the lubricant is suitable. To eliminate all risks and prevent possible malfunctions in the highly sensitive safety systems (e.g. ABS and ESP) while driving, we recommend that you use HELLA mounting paste.

Product characteristics

- Minimizes braking noise
- Temperature-resistant
- Non-metallic
- Simple application
- Transparent
- Acid-free

Application

- On brake and coupling systems
- As a battery terminal grease

When fitting brake linings, it is recommended that mounting paste be applied to the guide surfaces of the T-heads of the brake linings and the guides on the brake caliper in order to minimize brake noise.

HELLA mounting paste is available in a 75 ml tube and a 5.5 ml sachet.

355370011 | 75 ml | Case of 36 pieces

355370031 | 5.5 ml | Case of 400 pieces



HELLA Automotive Sales, Inc.

611 Highway 74 S, Suite 102

Peachtree City, GA 30269

Tel.: +1 (877) 224-3552

Fax: +1 (770) 631-7574

<https://hella.mypartfinder.com/>

© HELLA GmbH & Co. KGaA.

01.2026

Subject to technical and price modifications