



Technology with Vision

DuraLED®-S Rear Signal Lamp Series Built for the Future

DuraLED®-S, new slim signal lamps are direct replacements for the existing DuraLED® rear lamp series.

HELLA is enhancing its 26-year legacy of the DuraLED® product line by updating the iconic range to meet the latest automotive design standards and international regulations.

The new slim DuraLED®-S range offers a fully interchangeable, retrofit solution for existing models. It features the same completely sealed, maintenance-free “Fit & Forget by Design” construction, ensuring long-term durability, safety, and an ultra-long service life.



Interchangeable with
existing DuraLED®

New slim design

12/24V Multivolt™
HCS & EDT

Fully sealed and submersible

Resistant against harsh UV

Approved for use in
New Zealand and Australia

DURALED®-S

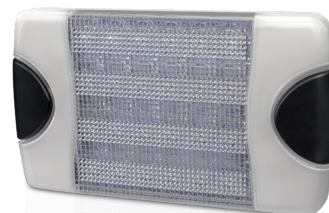
REAR SIGNAL LAMP SERIES



2SB 017 007-00X
DuraLED®-S Stop/Rear Position Lamp
with Night Light



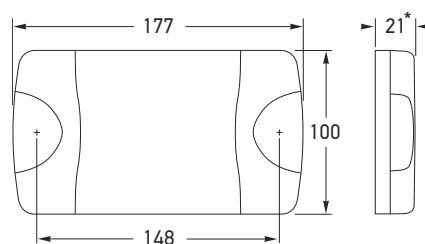
2BA 017 006-00X
DuraLED®-S Rear Direction Indicator Lamp



2ZR 017 008-001
DuraLED®-S Reversing Lamp



Mounting	Surface mount with mounting bushes supplied. Suitable for horizontal and vertical mounting				
Voltage	Multivolt™ for optimum brightness at input voltages from 9 to 33 volts				
Power Consumption	Stop:	8W			
	Rear Position:	2W			
	Night:	2W			
	Rear Direction Indicator:	7W			
	Reversing:	10W			
Temperature	Operating range -40° to +60°C				
Lens Material	Hi Impact PMMA				
Protection	Reverse polarity and transient spike circuit protection. IP 6K7 (Protection against dust and temporary water immersion) IP 6K9K (Protection against dust and high-pressure/steam jet cleaning)				
Cable	2.5m of sheathed multi-core cable.				
Compliance					
Stop/Tail	E24 5942	ECE R148/01	ADR 49/00	E24 5082	ECE R10/06
Rear Direction Indicator	E24 0924	ECE R148/01	ADR 6/00 Cat 2a	E24 4530	ECE R10/06 ISO 13207-1
Reverse	E24 0925	ECE R148/01	ADR 1/00	E24 5081	ECE R10/06



All dimensions in mm

All Models share the same width, length, and mounting holes as previous DuraLED® range.

*New models are 5mm slimmer.



Superseded P/N	Description	Replacement P/N	Packaging
2151 2151-H 2151-V 2151-HCS 2151BL	2BA 959 070-001 2BA 959 070-351 2BA 959 070-251 2BA 980 607-011 2BA 959 070-012	2BA 017 006-001	SINGLE CARTON
2151BULK	2BA 959 070-007		
2330 2330-H 2330-V 2330BL	2SB 959 060-001 2SB 959 060-351 2SB 959 060-251 2SB 959 060-002	2SB 017 007-001	SINGLE CARTON
2330BULK	2TA 959 060-017	2SB 017 007-007	BULK PACK OF 12
1430-H 1430-V 1430-HBL	2ZR 959 070-501 2ZR 959 070-551 2ZR 959 070-502	2ZR 017 008-001	SINGLE CARTON