

The new evolution of the DuraLED® Combi has arrived.



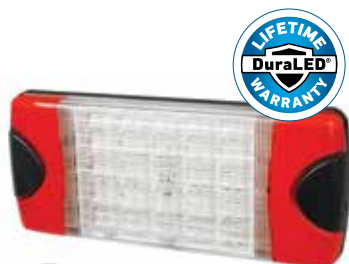
Upgrade to the Latest Technology

HELLA introduces the latest upgrade to the iconic DuraLED® Combi with a new slim design, featuring a depth of just 25mm. Combining all the features transport professionals depend upon; world-class materials, unsurpassed design, exceptional performance, and after sales service second to none, the new DuraLED® Combi will be the next staple in road transport lighting arsenals.

| Part Numbers | Slim | Power Supply MULTI VOLT | RF CommSafe | Cable Length (mtrs) | Built-in DT Connector | Lens Material GMD | LED HCS HELLA Compatibility Solution | Additional Functions | Application |
|-----------------|------|----------------------------|-------------|---------------------|-----------------------|----------------------|---|----------------------|--|
| 2377 | ✓ | 12/24V | ✓ | 2.5 | – | ✓ | – | Retro Reflector | Truck/Trailer |
| 2378 | ✓ | 12/24V | ✓ | 2.5 | – | ✓ | – | – | Heavy Duty Commercial High Impact Protection |
| 2378-BL | ✓ | 12/24V | ✓ | 2.5 | – | ✓ | – | – | Heavy Duty Commercial High Impact Protection |
| 2378-CS | ✓ | 12/24V | ✓ | 2.5 | – | ✓ | ✓ 24V | – | Heavy Duty Commercial High Impact Protection |
| 2378-DT | ✓ | 12/24V | ✓ | – | ✓ | ✓ | – | Night | Heavy Duty Commercial High Impact Protection |
| 2378-DTCS | ✓ | 12/24V | ✓ | – | ✓ | ✓ | ✓ 24V | Night | Heavy Duty Commercial High Impact Protection |
| 2VP 015 074-001 | ✓ | 12/24V | – | 2.5 | – | ✓ | – | Retro Reflector | Heavy Duty Commercial High Impact Protection |
| 2VP 015 074-101 | ✓ | 12/24V | – | 2.5 | – | ✓ | ✓ 12/24V | Retro Reflector | Heavy Duty Commercial High Impact Protection |
| 2VP 015 075-001 | ✓ | 12/24V | – | – | ✓ | ✓ | – | Retro Reflector | Heavy Duty Commercial High Impact Protection |
| 2VP 015 075-101 | ✓ | 12/24V | – | – | ✓ | ✓ | ✓ 12/24V | Retro Reflector | Heavy Duty Commercial High Impact Protection |

DuraLED® Combi-S Stop/Rear Position/Rear Direction Indicator Lamp - Heavy Duty

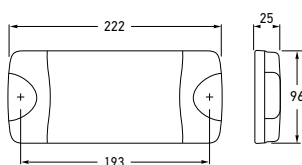
DuraLED® combination lamp featuring Ultra Wide Visibility Optics for significantly improved side visibility and Enhanced Definition Technology (EDT). Suitable for commercial vehicles and boat trailers. Shockproof and fully sealed to withstand water submersion and high-pressure washing. Optic appears clear until illuminated.



2378BL



Ultra slim height of only 25mm.



| | | |
|--------------------|-----------------|---------------------------|
| 2378 | 2SD 980 613-001 | |
| 2378BL | 2SD 980 613-002 | BLISTER PACK |
| 2378BULK | 2SD 980 613-007 | PACK OF 12 |
| 2378-CS | 2SD 980 613-201 | HCS TECHNOLOGY (24V ONLY) |
| 2378-6M | 2SD 980 613-031 | 6M CABLE |
| 2378-6MBULK | 2SD 980 613-037 | PACK OF 12 |

Mounting Two hole surface mount with mounting bushes supplied. Suitable for horizontal or vertical mounting.

Voltage Multivolt™ for optimum brightness in 12 and 24 volt systems

Power Consumption Stop: 5W
Rear position: 1W
Rear direction indicator: 5W

Protection Reverse polarity and 5000 watt Transient Voltage Suppressor (TVS)
IP 6K7 (Protection against dust and temporary water immersion)
IP 6K9K (Protection against dust and high-pressure/steam jet cleaning)

Cable Length Pre-wired with 2.5m of sheathed multi-core cable

Lens Material Nylon (PA12)

Compliance ADR 6/00: Cat 2a ADR 49/00 ISO 13207-1 (2378-CS only)
E24 5883 ECE R6/01 ECE R7/02

See page 276 for further information on HCS Technology and ISO 13207-1.

COMBI-S LAMP FUNCTIONS

| | | |
|------|---------------|--------------------------|
| | | |
| Stop | Rear position | Rear direction indicator |

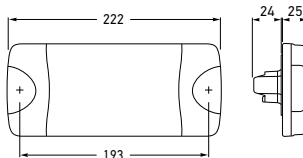
DuraLED® Combi-S Trailer Lighting Kit

A complete Fit and Forget solution for commercial trailers or boat trailers.



| | | |
|---------------------|---|--|
| 2378-TP | 2VB 980 613-801 | |
| Kit Contents | Each trailer lamp kit contains: | |
| 2 x 2378 | DuraLED® Combi-S stop/rear position and rear direction indicator lamp with 6m sheathed multi-core cable | |
| 2 x 2923 | Red retro reflector | |
| 1 x 2559-1 | LED licence plate lamp with 5m sheathed multi-core cable | |
| 1 x 4921 | 7 pole flat plug | |





| | | | |
|---|--|---|---|
| 2378DT | 2SD 980 602-001 | | |
| 2378DTCS | 2SD 980 602-201 | | HCS TECHNOLOGY (24V ONLY) |
| Mounting | Two hole surface mount with mounting bushes supplied. Suitable for horizontal or vertical mounting. | | |
| Voltage | Multivolt™ for optimum brightness in 12 and 24 volt systems | | |
| Power Consumption | Stop: 5W Rear position: 1W | Rear direction indicator: 5W Night: 1W | |
| Protection | As per Part No. 2378. | | |
| Accessory | 4963-P 6 pole DT plug, wedge and 6 contacts | | |
| Lens Material | Nylon (PA12) | | |
| Compliance | ADR 6/00: Cat 2a E24 5883 | ADR 49/00 ECE R6/01 | ISO 13207-1 (2378-DTCS only) ECE R7/02 |
| See page 276 for further information on HCS Technology and ISO 13207-1. | | | |

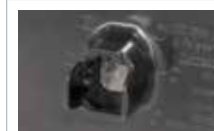
See page 276 for further information on HCS Technology and ISO 13207-1.



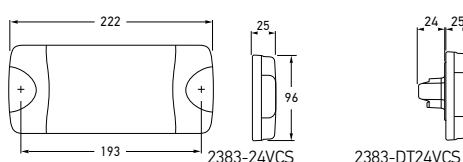
4963-P
Not included with lamp.


DuraLED® Combi-S Stop/Rear Position/Rear Direction Indicator Lamp with DT Connector and Night Light - Heavy Duty

DuraLED® combination lamp featuring Ultra Wide Visibility Optics for significantly improved side visibility and Enhanced Definition Technology (EDT). Night light function allows illumination of the rear position lamp independently from the remaining marker lamps on the vehicle, resulting in low power consumption. Suitable for commercial and boat trailers. Shockproof and fully sealed to withstand water submersion and high-pressure washing. Optic appears clear until illuminated.



Rear view showing DT connector that allows application of self-adhesive heat shrink.



| | | | | | |
|---------------------|---|--|---------------------------|------------|---------------------|
| 2383-24VCS | 2SK 980 613-511 – Incorporates HCS technology | | | | 2.5M CABLE |
| 2383-DT24VCS | 2SK 980 602-511 – Incorporates HCS technology | | | | DT CONNECTOR |
| Mounting | Two hole surface mount with mounting bushes supplied. Suitable for horizontal mounting. | | | | |
| Voltage | 24V DC | | | | |
| Power Consumption | Stop: | 3W | Rear direction indicator: | 3W | |
| | Rear position: | 1W | Reverse: | 3W | |
| | Night (2383-DT24VCS only): | 1W | | | |
| Protection | Reverse polarity and 5000 watt Transient Voltage Suppressor (TVS) IP 6K7 (Protection against dust and temporary water immersion) IP 6K9K (Protection against dust and high-pressure/steam jet cleaning) | | | | |
| Cable Length | Pre-wired with 2.5m of sheathed multi-core cable (except DT versions) | | | | |
| Accessory | 4963-P | 6 pole DT plug, wedge and 6 contacts | | | |
| Lens Material | Nylon (PA12) | | | | |
| Compliance | E24 5894 ECE R10 | ECE R6/01  | ECE R7/02 | ECE R23/00 | ISO 13207-1 |

COMBINATION LAMP FUNCTIONS



DuraLED® Combi-S Stop/Rear Position/Rear Direction Indicator/Reversing Lamp with DT Connector and Night Light

DuraLED® combination lamp featuring modern clear lens design. Low power consumption and long life equates to economical running costs. Ideal for 24V commercial vehicles. Optic appears clear until illuminated.



Ultra slim height of only 25mm.



Rear view showing DT connector that allows application of self-adhesive heat shrink.

DuraLED® Combi-R Stop/Rear Position/Rear Direction Indicator Lamp with Retro Reflector

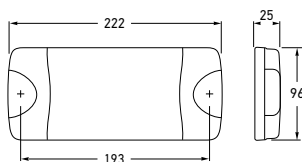
DuraLED® combination lamp with 34cm² red retro reflector which features Enhanced Definition Technology (EDT). Suitable for light commercial vehicle and boat trailers. Shockproof and fully sealed to withstand water submersion and high-pressure washing.



2377BL



Ultra slim height of only 25mm.



| | | | |
|---------------------------------------|--|-------------------------------|-------------------------------------|
| 2377 | 2VA 980 710-011 | | |
| 2377BL | 2VA 980 710-012 | | BLISTER PACK |
| 2377BULK | 2VA 980 710-017 | | PACK OF 12 |
| Mounting | Two hole surface mount with mounting bushes supplied. Suitable for horizontal mounting. | | |
| Voltage | Multivolt™ for optimum brightness in 12 and 24 volt systems | | |
| Power Consumption | Stop: 4W Rear position: 1W Rear direction indicator: 4W | | |
| Protection | Reverse polarity and 5000 watt Transient Voltage Suppressor (TVS). IP 6K7 (Protection against dust and temporary water immersion) IP 6K9K (Protection against dust and high-pressure/steam jet cleaning) | | |
| Cable Length | Pre-wired with 2.5m of sheathed multi-core cable | | |
| Lens Material | Nylon (PA12) | | |
| Compliance | ADR 47/00 E24 5882 | ADR 6/00: Cat 2a ECE R6/01 | ADR 49/00 ECE R7/02 ECE R3/02 |
| See page 76 for DuraLED® accessories. | | | |

COMBI-R LAMP FUNCTIONS

| | | |
|------|---------------|--------------------------|
| | | |
| Stop | Rear position | Rear direction indicator |

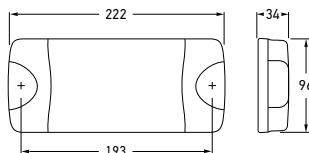
DuraLED® Combi-R Trailer Lighting Kit


A complete Fit and Forget solution for trailers or caravans.



| | | | |
|----------------|---------------------------------|---|--|
| 2377-TP | 2VA 980 710-811 | | |
| Kit Contents | Each trailer lamp kit contains: | | |
| | 2 x 2377 | DuraLED® Combi-R stop/rear position and rear direction indicator lamp with retro reflector and 6m sheathed multi-core cable | |
| | 1 x 2559-1 | LED licence plate lamp with 5m sheathed multi-core cable | |
| | 1 x 4921 | 7 pole flat plug | |





| | | | | |
|-------------------|--|-------------------------------|------------------------|---|
| 2380 | 2SK 980 603-501 | | | |
| 2380BULK | 2SK 980 603-507 | | | PACK OF 12 |
| 2380GMD | 2SK 980 603-551 | | | NYLON (PA12) LENS |
| Mounting | Two hole surface mount with mounting bushes supplied. Suitable for horizontal mounting. | | | |
| Voltage | Multivolt™ for optimum brightness in 12 and 24 volt systems | | | |
| Power Consumption | Stop: 5W Rear position: 1W Rear direction indicator: 4W Reverse: 3W | | | |
| Protection | Reverse polarity and 5000 watt Transient Voltage Suppressor (TVS). IP 6K7 (Protection against dust and temporary water immersion) IP 6K9K (Protection against dust and high-pressure/steam jet cleaning) | | | |
| Cable Length | Pre-wired with 2.5m of sheathed multi-core cable | | | |
| Compliance | ADR 1/00 E24 5870 | ADR 6/00: Cat 2a ECE R6/01 | ADR 49/00 ECE R7/02 |  ECE R23/00 |

See page 76 for DuraLED® accessories.

COMBINATION LAMP FUNCTIONS



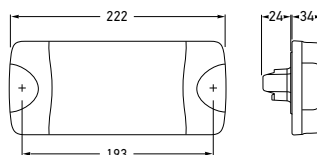
DuraLED® Combi Stop/Rear Position/Rear Direction Indicator/Reversing Lamp


DuraLED® combination lamp featuring modern clear lens design. Low power consumption and long life equates to economical running costs. Ideal for trucks and utes. Optic appears clear until illuminated.



DuraLED® Combi Stop/Rear Position/Rear Direction Indicator/Reversing Lamp with DT Connector and Night Light

DuraLED® combination lamp featuring modern clear lens design. Low power consumption and long life equates to economical running costs. Ideal for trucks and utes. Optic appears clear until illuminated.



| | | | | |
|-------------------|---|-------------------------------|---------------------------|---|
| 2380DT | 2SK 980 615-011 | | | |
| 2380DTGMD | 2SK 980 615-051 | | NYLON (PA12) LENS | |
| Mounting | Two hole surface mount with mounting bushes supplied. Suitable for horizontal mounting | | | |
| Voltage | Multivolt™ for optimum brightness in 12 and 24 volt systems | | | |
| Power Consumption | Stop: | 5W | Rear direction indicator: | 4W |
| | Rear position: | 1W | Reverse: | 3W |
| | Night: | 1W | | |
| Protection | Reverse polarity and 5000 watt Transient Voltage Suppressor (TVS) IP 6K7 (Protection against dust and temporary water immersion) IP 6K9K (Protection against dust and high-pressure/steam jet cleaning) | | | |
| Accessory | 4963-P 6 pole DT plug, wedge and 6 contacts | | | |
| Compliance | ADR 1/00 E24 5870 | ADR 6/00: Cat 2a ECE R6/01 | ADR 49/00 ECE R7/02 |  ECE R23/00 |



Rear view showing DT connector that allows application of self-adhesive heat shrink.

DuraLED® Combi-SR Stop/Rear Position/Rear Direction Indicator/Reversing Lamp with Retro Reflector

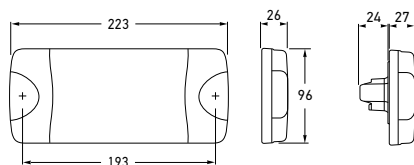
DuraLED® Combi-SR incorporates a built-in retro reflector, saving both time and money on installation. The all-in-one design makes the DuraLED® Combi-SR the ideal choice for trucks, utes and vehicles with limited space to mount a separate reflector.



Rear view showing DT connector



4963-P (not included with lamp)



| | |
|------------------------|-----------------------|
| 2VP 015 074-001 | CARTON PACK |
| 2VP 015 074-002 | BLISTER PACK |
| 2VP 015 074-007 | PACK OF 12 |
| 2VP 015 074-101 | HCS 12/24V |
| 2VP 015 075-001 | DT |
| 2VP 015 075-101 | DT, HCS 12/24V |

Mounting Suitable for horizontal mounting
Two hole surface mount with mounting bushes supplied

| | |
|-------------------|---|
| Voltage | Multivolt™ suitable for 12 and 24 volt systems |
| Power Consumption | Stop: 5W Rear position: 1.5W Rear direction indicator: 6W Reverse: 2W Night light: 1.5W (DT version only) |
| Protection | Reverse polarity and 5000 watt Transient Voltage Suppressor (TVS) IP 6K7 (Protection against dust and temporary water immersion) IP 6K9K (Protection against dust and high-pressure/steam jet cleaning) |
| Cable Length | Pre-wired with 2.5m of sheathed multi-core cable (non DT version) |
| Accessory | 4963-P 6 pole DT plug, wedge and 6 contacts (DT version) |
| Lens Material | Nylon (PA12) |
| Compliance | ECE R148 ECE R150 ECE R10 ISO 13207-1 ADR 1/00, ADR 6/00 : Cat 2a, ADR 47/00, ADR 49/00 |

See page 76 for DuraLED® accessories.

COMBI-SR LAMP FUNCTIONS

| | | | |
|------|---------------|--------------------------|---------|
| | | | |
| Stop | Rear position | Rear direction indicator | Reverse |

HELLA DURALED® COMBI-SR

ALL-IN-ONE

5

FUNCTION LED LAMP