



Australia



OEM INSPIRED LIGHTING & INSTALLATION SOLUTIONS



LED LAMP DISTRIBUTION MODULE

Looking for a simple and reliable way to connect lighting to your trailer harness? HELLA's revolutionary LED Lamp Distribution Module is the quick connect, easy trouble shooting solution for fitting lamps to heavy trailers and custom vehicles.

8JE 233 496-001

WATERPROOF CONNECTIONS

Rated IP6K7 and IP6K9K

OVERLOAD PROTECTED

Internal electronics protect and isolate individual circuit outputs reducing lamp outages as well as increasing the life of the lamps



TIME SAVING

With no requirement to splice cables, this significantly reduces build time making trouble shooting easier if an outage occurs

FULLY SEALED INTERNALS

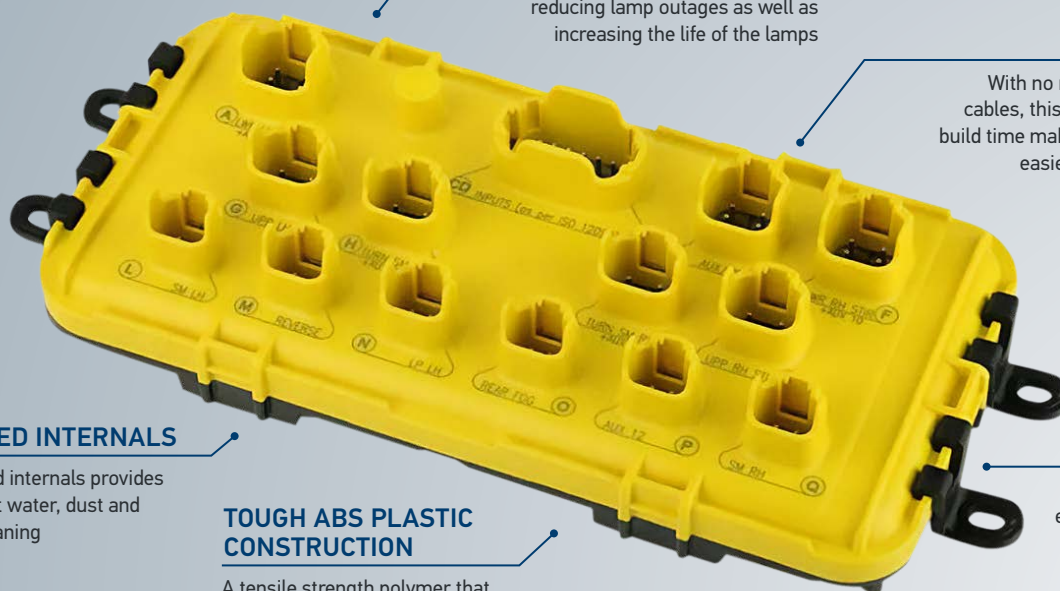
Completely sealed internals provides protection against water, dust and high pressure cleaning

TOUGH ABS PLASTIC CONSTRUCTION

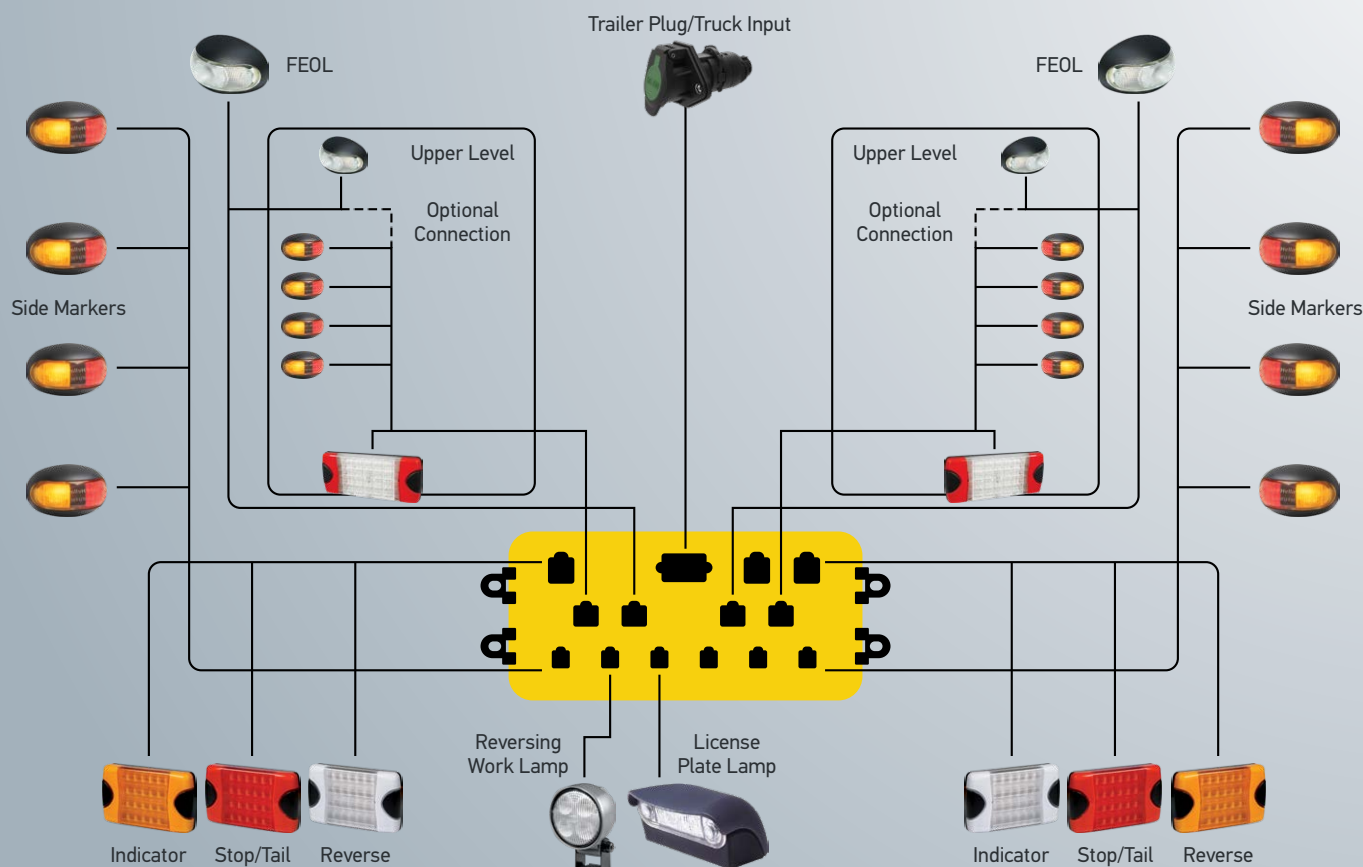
A tensile strength polymer that is impact resistant, tough and corrosive resistant

PLUG & PLAY

Quick connecting, easy trouble shooting solution for LED lamps to trailers and customer vehicles



WIRING EXAMPLE



COMBINATION LAMPS WITH DT CONNECTORS



DuraLED® Combi-SR Stop/
Rear Position/Rear Direction
Indicator/Reversing Lamp
with Retro Reflector
2VP 015 075-101 DT & HCS version
2VP 015 075-101 HCS version



DuraLED® Combi-S Stop/Rear
Position/Rear Direction Indicator
Lamp - Heavy Duty
2SD 980 602-001 (2378DT)
2SD 980 602-201 (2378DTCS)



Jumbo-S LED Triple Module
Stop/Rear Position/Rear
Direction Indicator/
Reversing Lamp - HCS
Technology
2VA 980 761-951
(2431DRCS)



Jumbo-S LED Triple Module
Stop/ Rear Position/Rear
Direction Indicator
Lamp - HCS Technology
2VA 980 761-941
(2430DTCS)



01 GRILAMID® LENS

Toughness against impact.
UV & chemical resistant.
Will not fade or embrittle

02 FIT & FORGET

Expertly designed and
precision manufactured

03 RELIABILITY

Continuous improvement
& strenuous testing for an
ultra long operating life

04 MOUNTING BRUSH

Easy to mount on
uneven surfaces

05 REFLECTOR

Inbuilt retro reflector
beneath the outer lens

06 LEDs

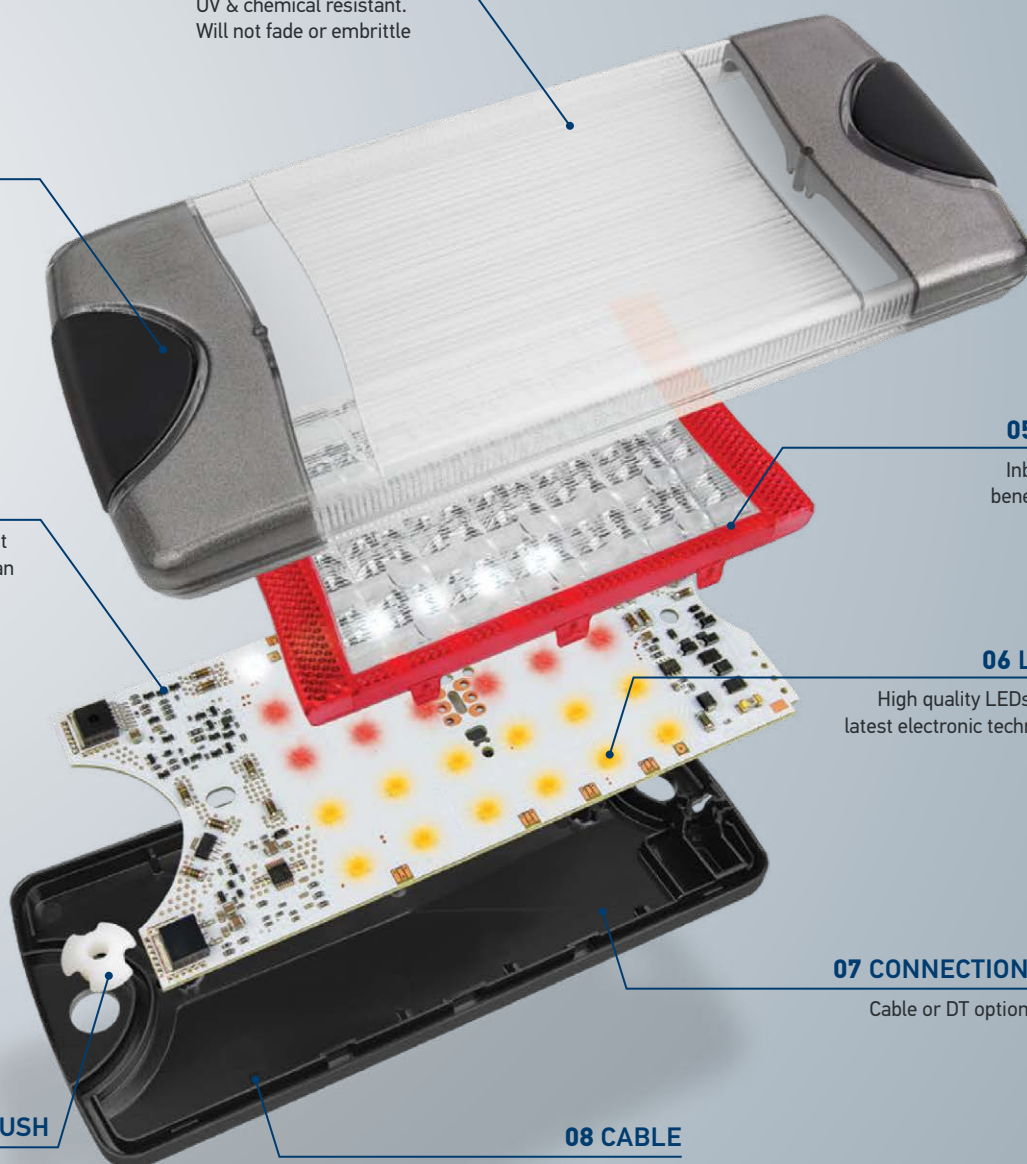
High quality LEDs & the
latest electronic technology

07 CONNECTION

Cable or DT option

08 CABLE

Glue bath cable entry
IP6K7, IP6K9K



SIDE MARKERS WITH DT CONNECTORS



DuraLED DT series has integrated DT connector molded into the base



HELLA Australia offers a Lifetime* Warranty for all automotive LED based lighting products that carry the DuraLED® brand.

*Lifetime means the economic life of the vehicle these products were first installed on.



DuraLED® Heavy Duty Side Marker Lamp with DT Connector - Red/Amber
2PS 980 990-001 (2073)
2PS 980 990-007 (2073BULK)



DuraLED® Heavy Duty Cab Marker/ Supplementary Side Direction Indicator Lamp with DT Connector
2BP 980 990-101 (2076)
2BP 980 990-107 (2076BULK)



DuraLED® Heavy Duty Front Position/End Outline Lamp with DT Connector
2PF 980 990-201 (2074)
2PF 980 990-207 (2074BULK)



DuraLED® Heavy Duty Front End Outline Lamp with DT Connector
2PF 980 990-401 (2071)
2PF 980 990-407 (2071BULK)



DuraLED® Heavy Duty Rear Position/End Outline Lamp with DT Connector
2XA 980 990-601 (2312)
2XA 980 990-607 (2312BULK)



White LED license plate lamp
2KA 959 640-381 (2559-1DT)

Manufactured in New Zealand



With a reputation for innovation and an uncompromising approach to quality, HELLA New Zealand is regarded as a manufacturing centre of excellence within the global HELLA group.

Established in 1973, HELLA New Zealand began developing and manufacturing high quality, robust LED vehicle lighting products to meet the unique requirements and challenges of end users in Australia and New Zealand.

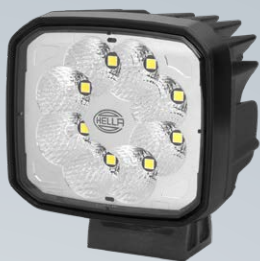
A strong partnership soon formed between HELLA's Australian and New Zealand operations, and for almost 50 years many joint projects that began by creating new and innovative solutions to the challenges of their local markets have resulted in products that have gone on to achieve global success.

A Lifetime of Service

With over 25 years of strenuous testing, continuous improvement and proven reliability in use on the roads of Australia and New Zealand, HELLA Australia is proud to stand by the unique DuraLED® lifetime warranty*, which warrants every DuraLED® product to last the economic life of the vehicle they were first installed on.

However, in the unlikely event that you should experience a confirmed warranty-related problem with DuraLED®, our commitment to your satisfaction ensures that HELLA will either repair or replace the product or refund the purchase price.

LED WORK LAMPS WITH DT CONNECTORS



Ultra Beam S Series

1GA 995 706-001

Close Range

1GA 995 706-011

Long Range



Module 70 S Series

1G0 996 776-001

(1000lm) Close Range

1G0 996 776-201

(1850lm) Close Range



Power Beam S Series

1GA 996 588-001

(1000lm) Close Range

1GA 996 588-201

(1850lm) Close Range



**ADR
APPROVED
REVERSE**

Q90 Compact LED

Reversing Lamp

2ZR 996 284-501

(1563LED-RE)

S SERIES HIGHLIGHTS

CISPR25 CLASS 5

No Radio Interference and best EMC Performance

THERMO PLASTIC HOUSING*

Light Weight, Corrosion and Chemical Resistant

OVERHEAT PROTECTION

Protects the circuit board and housing of lamp from overheating

INTEGRATED THERMAL MANAGEMENT

Less Degradation of LED = Long lasting performance

COMPETITIVE PRICE

Best performance with affordable price and value for money

IMPACT RESISTANT PC LENS

Precision alignment for maximum performance and prevents accidental damage

DANGEROUS GOODS APPROVED

Can be used on fuel tankers

MADE IN AUSTRIA

Designed and Manufactured in Europe



- The high quality European designed and manufactured S series work lamps provide an excellent price – performance ratio.
- Thanks to the weight reduction, S series is suitable for high vibration area and specialist mounting applications. E.g. Mirror arms, fibreglass moulding.
- S series Work Lamps are Transport of hazardous goods compatible being IP6K7, IP6K9K with integrated DT connector, as opposed to budget work lights with single insulation and “no connector” which do not comply.
- Homogeneously dispersed light output with a colour temperature of 6500K being similar to daylight resulting in reduced fatigue for equipment operators.
- **CISPR 25 class 5** - guarantees no radiated emission to interfere with radio coms and other RF sensitive devices, and can be mounted directly next to antenna.
- Thermo plastic housing* and can be used in salty and corrosive environments. E.g Concrete trucks

*Ultra Beam S Series comes with die-cast aluminium housing

REVERSE ALARMS WITH DT CONNECTORS

BM SERIES REVERSING ALARMS

HELLA's BM Series reversing alarms come packed with our legendary OE quality robustness and reliability.

This includes testing to validate the product under conditions such as , low and high temperature, vibration, corrosion, high pressure hot water, dust ingress, sound pressure level and frequency testing.



BM10

3SL 009 148-197 (6009)

3SL 009 148-207 (6010)



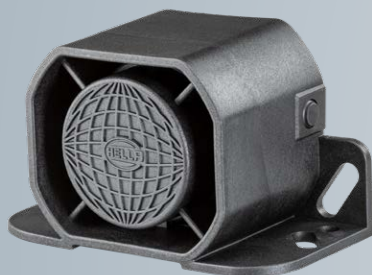
BM20

3SL 996 139-501 (6051) 92DB(A) White Noise

3SL 996 139-511 (6052) 97DB(A) White Noise

3SL 996 139-521 102DB(A) White Noise

3SL 996 139-531 92-102DB(A), Self Adjusting, White Noise



BM30

3SL 996 139-247 (6016)

3SL 996 139-257 (6017)

3SL 996 139-277 (6018)



BM40

3SL 996 139-551 (6049) 97, 102 OR 112DB(A), Switchable, Tonal

3SL 996 139-561 97, 102 OR 112DB(A), Switchable, White Noise

3SL 996 139-571 (6048) 97-112DB(A), Self Adjusting Tonal

3SL 996 139-581 92-107DB(A), Self Adjusting White Noise

EPOXY ENCAPSULATED ELECTRONICS

Long service life, resists water and vibration. ECE R10 compliance guarantees radiated emissions do not interfere with radio comms and other RF sensitive devices.

FLEXIBLE MOUNTING OPTIONS

Compact versions (BM10, BM20) for maximum performance in a small size, larger (BM30, BM40) footprints available for heavy duty environments.

DT TYPE CONNECTIONS

Quick fit Industry standard waterproof connections stay reliable for a long time.

WHITE NOISE OUTPUT

White noise models best for urban environments to reduce noise pollution and community disturbance.

TONAL NOISE OUTPUT

Tonal noise models are best for attracting attention in noisy industrial environments where maximum audibility is required.

SMART NOISE LEVEL ADJUSTMENTS

Models with smart noise output adjustment reduce noise pollution while maximizing audibility by auto adjusting sound output based on ambient noise level.



* NOTE - BM30 pictured, features & functionality varies according to model.

HELLA Compatibility Solution (HCS) Technology

LED LAMPS - RETROFIT Q&A

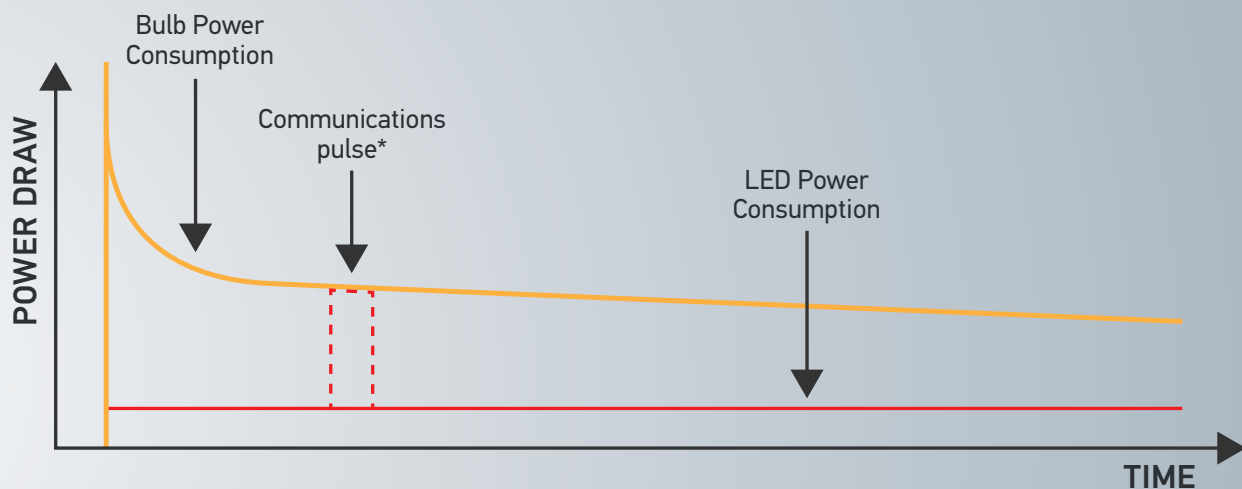
Fitting a LED lamp in place of an old bulb illuminated lamp? If your indicators now flash quickly you no longer comply with Australian Design Rules.

That is because vehicles must have some means to inform the driver of when an indicator fails – **This is a legal requirement of ADR 13/00 6.5.8**. As LED lamps consume relatively little current, many of the bulb detection systems fail to detect that an LED lamp is operating. Once a bulb lamp is replaced with an LED lamp the vehicle will indicate that the lamp has failed via a warning message, a warning light or audio and visual change to the indicator frequency.

What is HCS, how does it help to become ADR 13/00 6.5.8 compliant?

HELLA developed the HCS (Hella Compatibility Solution) to allow for flasher units or lamp control units in vehicles to detect defective LEDs in lamps to allow the vehicle a way of truly detecting LED lamp failures. Every HELLA HCS lamp transmits a 'pulse' to the controller or flasher unit to confirm that the lamp is working correctly. This technology proved so effective that it became the basis of the **ISO 13207-1** standard used on European trucks for lamp failure detection.

Using a system of this type to monitor the function of LED lamps allows for authentic compliance with ADR 13/00 6.5.8



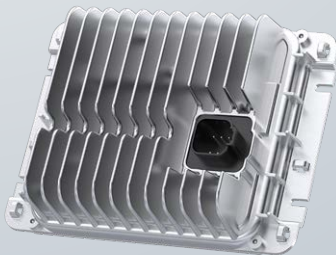
*The HCS innovation generates a pulse that simulates the current draw equivalent to an incandescent globe and allows lamps, flashers and control units to communicate.

HELLA HCS lamps are of course compatible with all trucks and body control modules supporting HCS or **ISO 13207-1** most European trucks incorporate this technology.

For non-European vehicles without **ISO 13207-1** functionality, the HCS Retrofit Ballast unit shown below enables retrofit HCS functionality options.

HCS BASIC CONTROL UNIT (12V AND 24V)

HCS LED indicator outage monitoring unit with 21W bulb current simulation.



| | |
|------------------------|---|
| 5DS 227 488-001 | 12 VOLT DC |
| 5DS 227 488-101 | 24 VOLT DC |
| Connection | DT Type 6-Pin Socket (Indicator Circuit Input/Output) |
| Note | Control unit is responsible only for monitoring the direction indicators. |

Why can't I just use some resistors in series with the lamps?

Vehicle retrofiters often add resistors in conjunction with LED lamps to add electrical load to the lighting circuit to suppress lamp failure warnings. While the warnings disappear, so does the vehicle's way of warning you of a faulty lamp, therefore losing compliance with **ADR 13/00 6.5.8**. HCS retrofitted systems will preserve the functionality required to meet **ADR 13/00 6.5.8** and maintain a higher level of safety for road users.

ELECTRICAL CONNECTORS

Plugs

2-Pole, Pack of 15 - **8KW 905 683-001** (9.HM4940)

4-Pole, Pack of 10 - **8KW 905 683-021** (9.HM4944)

6-Pole, Pack of 10 - **8KW 905 683-031** (9.HM4946)

Sockets

2-Pole, Pack of 15 - **8KW 905 684-001** (9.HM4941)

4-Pole, Pack of 10 - **8KW 905 684-021** (9.HM4945)

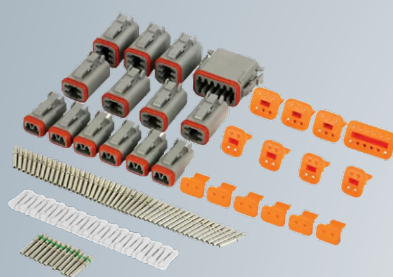
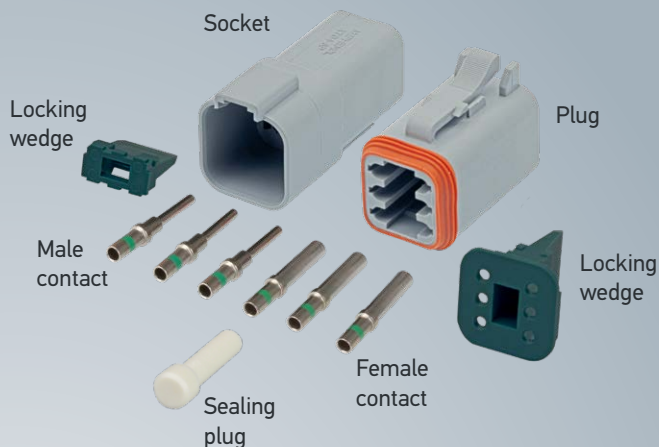
6-Pole, Pack of 10 - **8KW 905 684-031** (9.HM4947)

Terminals and sealing plugs

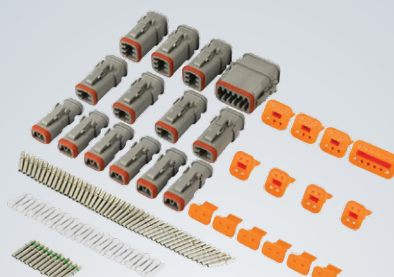
Female, for Plugs, Pack of 100 - **8KW 905 684-001** (9.HM4955)

Male, for Sockets- **8KW 905 684-021** (9.HM4954)

Sealing Plug, Pack of 50 - **8JA 905 048-001** (9.HM4956)



LED module matching connector kit
8KW 959 774-851



LED module matching connector kit
8KW 959 774-861



7 Pin Waterproof Sockets, Crimp Terminals

8JB 905 392-051 SAE J560 Socket
(Pictured Left)

8JB 910 032-041 ISO 1724 Socket
(Pictured Right)

HELLA Australia Pty. Ltd.

4 Hargrave Place
P.O. Box 89
Mentone, Victoria,
3194 Australia

Techline: 1800 061 729
info.au@hella.com
hellaorders@hella.com

Find us at:

facebook.com/hella.australia
youtube.com/hellaaus
instagram.com/hella.australia

© 2023 HELLA Australia Pty Ltd

hella.com.au