



## BRIEF INFORMATION

### Module 70 LED Generation 3.2 compact

- LED worklamp in compact design
- Corrosion-free and heat conductive plastic housing
- Particularly efficient electronics (1,500 lumens with 13 watts)
- Also available as a reverse lamp

## PRODUCT FEATURES

With the Module 70 LED Generation 3.2 compact, the extensive Module 70 series has been extended by an LED version with an innovative plastic housing. Along with weight reduction, the new material also offers the advantage of complete corrosion resistance. The plastic housing is heat conductive and also features cooling fins which ensure the required heat dissipation from the LEDs.

The LED worklamp is equipped with particularly efficient electronics. So now, for the first time, it is possible to achieve a powerful light output of 1,500 lumens with an energy consumption of only 13 watts. That corresponds to more than 110 lumens of light output per watt (In comparison the Module 70 LED Generation 3.2 generates 90 lumens per watt).

Thanks to its multi-voltage electronics, the Module 70 LED Generation 3.2 compact can be operated with a 12 or 24 volt power supply. The integrated electronics protect the device in the event of polarity reversal and guarantee constant brightness even when the operating voltage fluctuates between 9 and 32 volts. Furthermore, temperature sensors protect the worklamp from overheating. Only in this way can the long lifetime of the LEDs and a safe working environment at night be guaranteed.

The light of the worklamp is very similar to daylight. This helps to distinguish colours more easily in the dark, and thus facilitate the human eye's sensory perception. Such an advantage then prevents the eyes from tiring quickly during work at night.

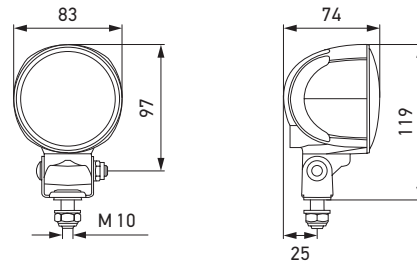
The Module 70 LED Generation 3.2 compact is also available as a reverse lamp.

# TECHNICAL DETAILS

## Technical data

|                                   |  |
|-----------------------------------|--|
| Operating voltage / rated voltage | 9 – 32 V                                     |
| Light source type                 | LED  |
| Power consumption                 | 13 W   |
| Light output                      | 1,500 lm                                     |
| Colour temperature                | Worklamp: 6,500 K<br>Reverse lamp: 5,000 K   |
| Protection class                  | IP 6K9K, IP 6K8                              |
| Type approval                     | ECE-R10<br>ECE-R23 (reverse lamp)            |
| Housing                           | Heat conductive plastic                      |
| Protection                        | Overheating and polarity reversal protection |
| Mounting                          | Upright, pendant                             |
| Bracket width                     | 36 mm metal bracket                          |
| Weight                            | ~ 420 g                                      |
| Manufactured in                   | Austria                                      |

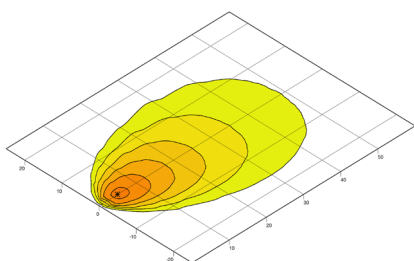
## Dimensional sketch



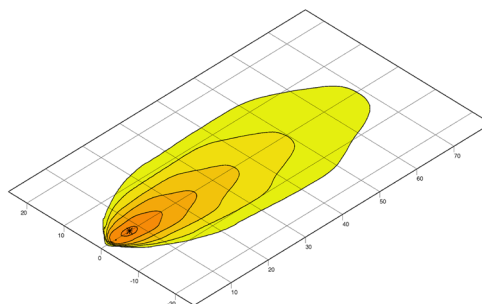
# RANGE OVERVIEW

|                                  | Worklamp<br>1G0 996 576-... |                | Reverse lamp<br>2ZR 996 576-... |
|----------------------------------|-----------------------------|----------------|---------------------------------|
|                                  | -601                        | -611           | -621                            |
| Close-range illumination         | -                           | X              | -                               |
| Long-range illumination          | X                           | -              | -                               |
| Extra wide illumination          | -                           | -              | X                               |
| Swivel base                      | X                           | X              | X                               |
| Recommended angle of inclination | 5°                          | 12°            | 32°                             |
| Connection                       | 2,000 mm cable              | 2,000 mm cable | 2,000 mm cable                  |
| ECE-R23 reverse lamp approval    | -                           | -              | X                               |

# LIGHT DISTRIBUTION



Close-range illumination



Long-range illumination

lux >= 0 1 2 4 8 16 32