



BRIEF INFORMATION

Halogen 90 mm performance headlamp

PRODUCT FEATURES

- Halogen headlamp in low-beam and in high-beam version
- Optimised illumination
- Can be combined with other 90 mm modules

The halogen 90 mm performance headlamps dispose of a 50 mm DE lens and provide optimised illumination. The low-beam and high-beam modules are suitable for long-haul use, thanks to enhanced quality. They are furthermore characterised by a lightweight magnesium body, a pattern-free and hardened glass-cover lens and a high-quality aluminium reflector as well as a splash-proof plug connection.

The low-beam and high-beam modules are available in 12 V and 24 V as well as for left- and right-hand traffic. It is possible to choose among performance, premium or classic mountings. Perfectly fitting adjustment screws are supplied. The durable light bulbs are also suitable for heavy-duty use.

ADVANTAGES OF PERFORMANCE SERIES

The 90 mm module headlight range can always set new benchmarks by integrating field experience from a wide range of applications as well as through the consistent further enhancement of e.g. lighting technology and its implementation in products.

Mechanical:

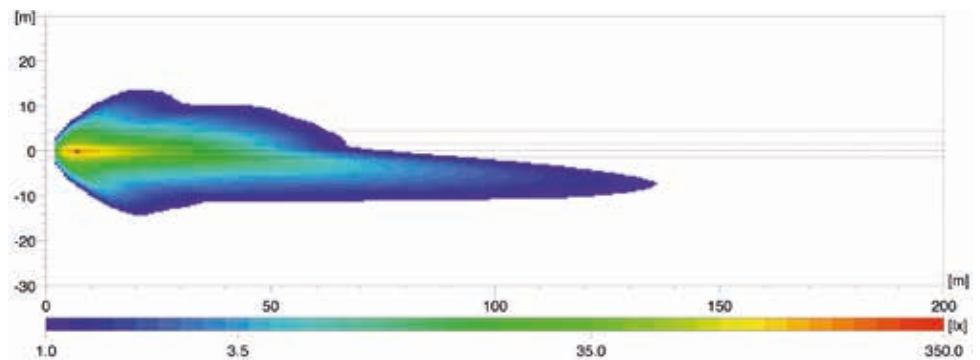
- Optimised ventilation system Nito Element (textile membrane) prevents entry of dust (diesel particles) and of elementary moisture into headlamps - undiminished lamp performance for vehicle's entire useful life.
- The headlamp mounting system (reinforced version) meets the stringent test requirements of target group truck and construction machinery.
- Waterproof standard connector system for bulbs.

Lighting technology:

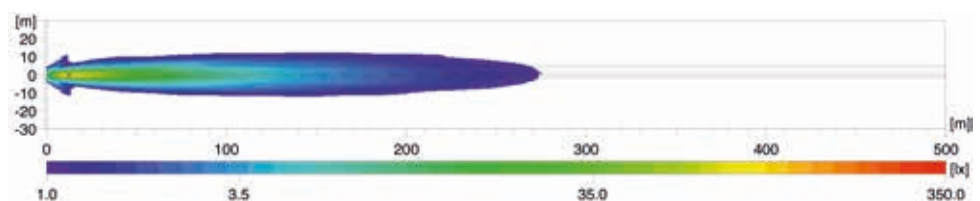
- The enhanced reflector geometry and the use of robust H1 bulbs meet the technical state-of-the-art in current headlamps in the automotive industry and provide optimised illumination:
 - increased spread
 - greater range
 - better homogeneity and intensity

COMPARISON OF LIGHT DISTRIBUTION IN LOW BEAM AND HIGH BEAM

Halogen 90 mm performance low-beam headlamp





Halogen 90 mm performance high-beam headlamp



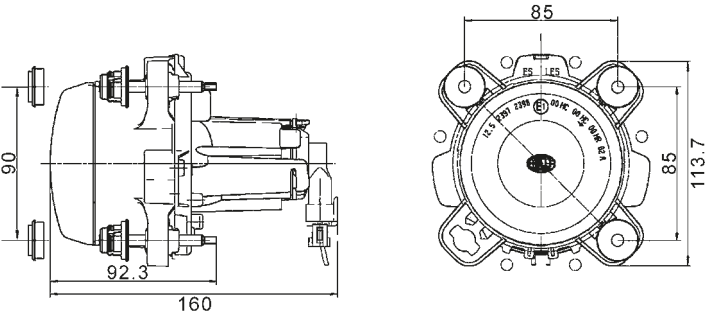
TECHNICAL DETAILS



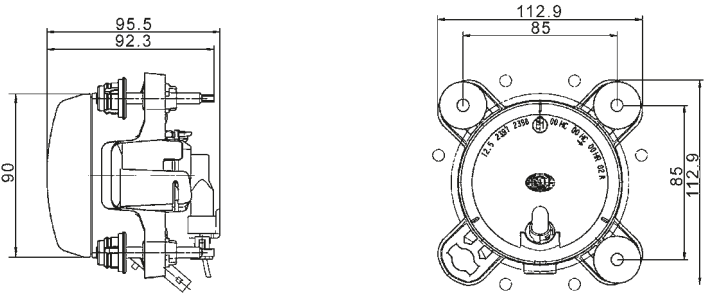
Technical data		
	Low Beam	High beam
Voltage	12 V or 24 V	12 V or 24 V
Functions	Low Beam	High beam, with or without position light
Connector	8JD 156 151-807	8JD 156 151-807
Weight	583 g	360 g
Temperature	-40 °C to +50 °C	-40 °C to +50 °C
Lens Material	Hardened glass	Hardened glass
Housing Material	Magnesium	Magnesium
IP Protection Class	IP 5KX, IP X4K, IP X9K	IP 5KX, IP X4K, IP X9K
Specification	<div></div> <p>HELLA Norm 67001 Class 9: commercial vehicles, tractors and upper bodies (commercial vehicles), city buses and coaches, rescue vehicles, public authorities, communities, streetcars, fork lifts</p>	<div></div> <p>HELLA Norm 67101: Class 3.1: caravan standard, Class 3.2: caravan premium, Class 4.1: bus / tram, Class 6.1: commercial vehicles, Class 7.2: Agro Plus</p>
Type approval	Ⓔ 2397 / Ⓔ 2398 / CCC	Ⓔ 2397 / Ⓔ 2398 / CCC

Dimensional sketches

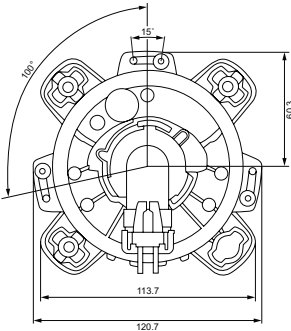
Halogen 90 mm performance low-beam headlamp





Halogen 90 mm performance high-beam headlamp



Tourist solution for left-hand traffic



RANGE OVERVIEW AND ACCESSORIES

Product picture	Description	Voltage	Light source	Mounting	Part number
Halogen 90 mm performance low-beam headlamp*					
	Low beam light right-hand traffic	12 V	Halogen H1	Premium	1BL 247 042-177
				Performance	1BL 247 042-007
		24 V		Premium	1BL 247 042-197
				Classic	1BL 247 042-157
	Low beam left-hand traffic	12 V	Halogen H1	Premium	1ML 247 042-187
				Performance	1BL 247 042-027
		24 V		Premium	1ML 247 042-207
				Classic	1ML 247 042-167
Halogen 90 mm performance high-beam headlamp					
	High beam with position light	12 V	Halogen H1	Premium	1K0 247 043-117
				Performance	1K0 247 043-007
		24 V		Premium	1K0 247 043-137
				Classic	1K0 247 043-097
	High beam without position light	12 V	Halogen H1	Premium	1K0 247 043-127
				Performance	1K0 247 043-017
		24 V		Premium	1K0 247 043-147
				Classic	1K0 247 043-107

* Low beam adjustable to tourist solution for left-hand traffic

Accessories

Description	Application	Part number
Premium carrier frame (black)	–	9AH 169 580-011
Performance carrier frame (black)	–	9AH 254 228-012
Classic carrier frame	–	9AH 157 659-000
Halogen 90 mm performance low-beam headlamp		
Connector vehicle side supply voltage on the Plus pole	H1, H7, xenon	8JD 156 151-807
Headlamp leveling actuator	12 V	6NM 007 282-221
	24 V	6NM 008 299-501
Mounting set for headlamp leveling actuator (brackets & joints)	–	8HG 183 586-001
Bracket for right-hand mounting of headlamp leveling actuator	–	8GH 138 619-007
Bracket for left-hand mounting of headlamp leveling actuator	–	8GH 138 620-007
Headlight cleaning system with fixed nozzles	12 V	8WS 008 549-001
	24 V	8WS 008 549-501
Headlight cleaning system with telescopic individual nozzles	12 V	8WT 008 549-101
	24 V	8WT 008 549-601
Headlight cleaning system with telescopic double nozzles	12 V	8WT 008 549-201
	24 V	8WT 008 549-701
Halogen 90 mm performance high-beam headlamp		
Connector vehicle side supply voltage on the Plus pole	H1, H7, Xenon	8JD 156 151-807
Connector parking light (only in version with position light)	–	8JD 156 150-807
Wiring harness (only in version with position light)	–	8KA 202 117-011
Actuator headlamp level system	–	9XX 254 163-037