

Top Design



Intelligent Lighting



Innovative Lighting Technology



Contents

Hella Lighting

Spotlights and fog lights for off-road vehicles, caravans and commercial vehicles.

Classic 160	32
Classic 181	32
Classic 210	32
Comet 200 Chromium	29
Comet 200 Xenon	29
Comet 450	30
Comet 500	30
Comet 550	30
Comet FF 100	29
Comet FF 200	29
Comet FF 200 Blue	29
Comet FF 300	29
Comet FF 300 Blue	29
DE Xenon	26
DE Xenon Premium Edition	26
DynaView® Evo2	8-9
FF 50	31
FF 50 Blue	31
FF 75	31
FF 75 Blue	31
HydroLux® 1000 FF	24-25
Jumbo 220	21
Jumbo 220 Blue	21
Jumbo 320 Blue	23
Jumbo 320 FF	22
Jumbo 320 Xenon	22
Luminator Chromium	15, 33
Luminator Chromium Blue	15, 33
Luminator Chromium CELIS®	15
Luminator Metal	13, 33
Luminator Metal CELIS®	13
Luminator Xenon	13
Luminator Compact Chromium	17
Luminator Compact Chrom. Blue	17
Luminator Compact Chrom. CELIS®	17
Luminator Compact Metal	16
Luminator Compact Metal Xenon	16
Luminator Compact Metal CELIS®	16
Micro DE	27
Micro DE Premium Edition	27
Rallye 1000 FF	33
Rallye 1000 Xenon	33
Rallye 3000	18, 33
Rallye 3000 Blue	18, 33
Rallye 3000 CELIS®	19
Rallye 3000 Compact	20
Rallye 3000 Compact Blue	20
Rallye 3000 Compact CELIS®	20

Hella Light & Design

Powerful design versions for your vehicle: more stylish, more elegant, safer.

Audi A4	36
Audi A6	37
BMW 3 Series	42-43
BMW 5 Series	40-41
BMW Z4	39
Ford Focus	44-45
Mini	38
Vauxhall Astra	46-47
Vauxhall Vectra	48
Vauxhall Zafira	48
Renault Scénic	49
Seat Leon	49
Volkswagen Bora	64
Volkswagen Golf III	60-63
Volkswagen Golf IV	54-59
Volkswagen Golf V	51-53
Volkswagen Golf Plus	50
Volkswagen Lupo	69
Volkswagen Passat	65
Volkswagen Polo III	68
Volkswagen Polo IV	66-67
Volkswagen T5	70
Volkswagen Touran	71
Additional stoplights	74
Side marker lamps	75
Daytime running lights 12 V, 24 V	76-78
Auxiliary indicators	73
Daytime running lights , 24 V	77
High-quality accessories	79

Hella Accessories

Practical, useful and wide-ranging.

Air pumps	83
Bulbs	92-93
Chargers	87
Fanfares	86
Fans	87
Horns	86
Radio remote control systems	84
Reading lights	85
Search lights	85
Tuning light modules 90 mm	88-89
Tuning light modules 50 mm	90-91
Hazard warning lights / hazard triangle	81
Scania P94-T164	82
Fiat Ducato	83
Summary of styling range	94-99

E-Motion

E-Motion Factory

The Hella 3D world of experience on the Internet. Select your dream requirements and go on a virtual test drive!

www.hella.com



Accessories / Tuning

Tailor-made solutions:

with our top-quality accessories from the idea to the ready-to-use product



Hella hazard indicators / warning triangle



See and be seen: powerful light signals, visible up to three kilometres away. Work light can be set. Stands securely in winds up to force 9. Housing impact resistant and splashwater-proof. GGVS and type approved.



Hazard indicator light 3003 ACCU

The new rechargeable battery version of this hazard indicator is always ready for use. When the engine is running the battery is charged via contacts in the holder. Always ready for use and ready to hand. Automatic change-over for 12 / 24 V systems. Operating time in flashing mode 40 hrs, 7 hrs for work light. Charging holder and lead-gel battery included in the scope of supply. Type-approved.

2XW 007 146-011



Model 3003

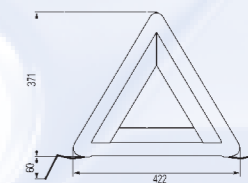
(for battery operation) with type approval

2XW 007 146-001



Charging holder for Model 3003 ACCU

To keep your 3003 ACCU hazard indicator ready for use and to hand at all times. Charging holder and rechargeable battery are included with the 3003 ACCU model.



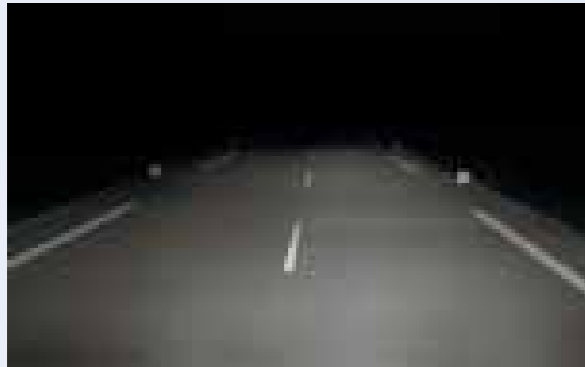
Hella warning triangle

Stands securely. Easy to put up. Type-approved. With storage box.

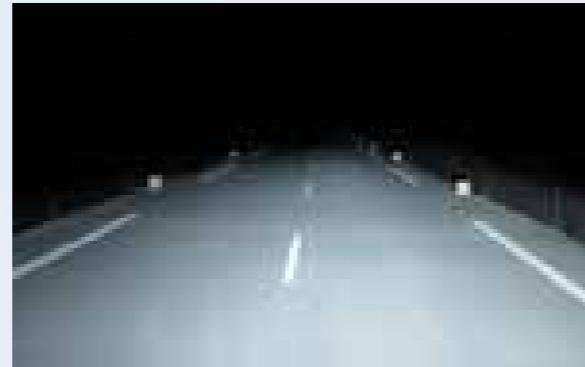
8RW 341 421-001

Xenon light for Scania BR 4

Full view ahead! In the Hella light testing facility the difference in road illumination can be clearly demonstrated. With xenon light you can see simply better. And further.



Road illumination with halogen low beam light



Road illumination with xenon low beam light



Scania P94 - T164 (BR 4)

Xenon low beam, halogen high beam	1DL 008 735-811
Lens cleaning system required	8WS 008 680-001
Automatic headlight levelling device required	8XX 008 614-101

XENON

Xenon light for

Fiat Ducato, Citroën Relay and Peugeot Boxer. Xenon and halogen double headlight systems for powerful light on the road.



Those who are on the road a lot need the best possible light – xenon! The white, long-range light, which is almost as bright as daylight, ensures brighter, wider road illumination and thus relaxed and safe driving. Convert to xenon now. For your own safety.

All product features at a glance:

- Xenon DE low beam headlight
- Halogen FF driving light
- Incl. automatic headlight levelling and lens cleaning systems
- With indicator and position light
- Design trim can be painted in the colour required
- Headlights can be adjusted from the front
- Professional cable harness
- Also available as a version with halogen low beam/high beam light
- Incl. bulbs



Twin headlight system

Fiat Ducato (05/02 →), Citroën Relay (05/02 →) and Peugeot Boxer (05/02 →)

Xenon low beam, halogen high beam incl. lens cleaning system and autom. headlight levelling	set	1DL 008 945-911
Halogen low beam, halogen high beam	set	1DL 008 945-891



Radio remote control system

Switch on and off by remote control

In future you can switch the auxiliary functions in your car on and off by radio remote control, thus considerably reducing assembly expenditure. Do-it-yourself fitting has been simplified.

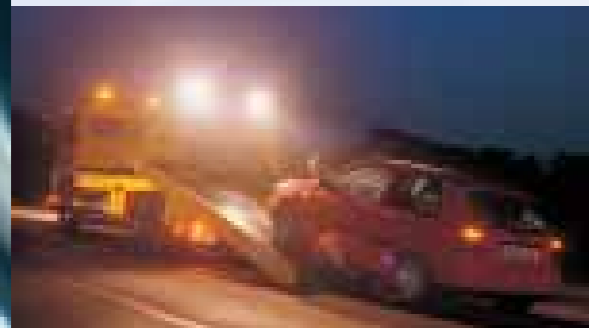
Examples for radio remote controlled switching:



Fog lights



Work lights



Search lights



Entry lights on caravans and motor homes



Free choice of the switch position for radio transmission between the transmitter e.g. on the dashboard and the receiver e.g. in the engine compartment.

Advantages of radio remote control

- Simplified, quicker and more economical assembly
- No need to drill holes in the dashboard
- Free choice of the switch position
- Changing code prevents influence of other radio remote controlled devices and makes parallel use of several radio switching systems possible
- ECE type approved and CE tested
- Range of at least 20 m (important for mobile use)

Transmitter with control LED

12 V 6ZN 160 705-001
24 V 6ZN 160 705-011

Technical data:

Max. switchable load:	2 x 100 W
Transmission frequency:	433 MHz
Operating voltage:	12 V or 24 V
Range:	at least 20 m

Map lights



Map lights

You can bend this light in all directions. Hella map lights - powerful, glare-free lights on flexible metal arms. In 3 different lengths.

For permanent mounting:

Arm length 500 mm

With holder for permanent mounting, incl. 12 V / 5 W halogen bulb for bright reading light

2AB 004 532-001

24 V operating voltage, incl. halogen 24 V / 7.5 W bulb.

2AB 004 532-051

Arm length 195 mm

With holder for permanent mounting, incl. 12 V / 5 W halogen bulb for bright reading light.

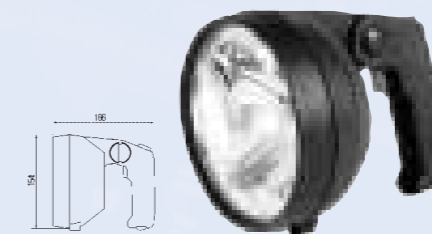
2AB 004 532-011

For cigarette lighter:

Arm length 160 mm

With plug for cigarette lighter socket, incl. 12 V / 5 W halogen bulb for bright reading light.

2AB 004 532-021



Hand-held search light

With two light sources that can be switched on separately for close or long range. Spiral cable 3.5 m in length with universal plug for cigarette lighter. Light output Ø 139 mm. Incl. separate base and 12 V bulb (24 V operation possible).

1H5 998 502-002



Hand-held DIY lamp

Sturdy and high-quality hand lamp. Electronic ballast unit: no flickering – light comes on immediately (brand bulb). 8 W, 230 V, 50-60 Hz, protective class II, protective rating IP 20.

2XM 001 974-171

Accessories:

Magnetic bracket, small

8HG 861 919-001

For reading road maps and sea charts. In the car, truck, caravan, or boat. Always the right light in the right place at the right time.



Hella cockpit hand-held light with reading and work light

Infinite regulation from spotlight to floodlight. Holder for stationary mount on vehicle. Magnet for temporary mounting on body. Rotating light head, spiral cable stretches up to 3 metres, with plug for cigarette lighter.

incl. xenon bulb 12 V / 6 W
2XM 004 444-001

incl. bulb 24 V / 7.5 W
2XM 004 444-011



Halogen surface mounted light

Very compact, functionally designed mini-spot for caravans and mobile homes (mounting on wall, ceiling or table), black.

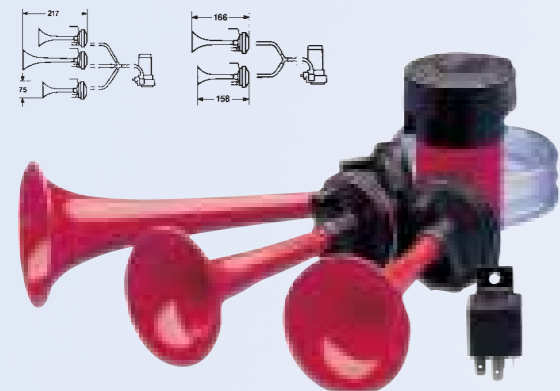
Incl. 12 V / 5 W halogen bulb. Light head swivels through 330°, whole light turns through 340°.

2AB 004 532-102

Horns and fanfares

Air-horn sets

High performance compressor. 2/3 trumpets. Type-approved to EC directives. With tubing, relay and fixing bracket.



Triple-tone compressed air-horn set, 12 V

High-tone 840 Hz, middle-tone 795 Hz, low-tone 630 Hz

3PD 003 001-921¹

3PD 003 001-922²

Twin-tone compressed air-horn set (not illustrated)

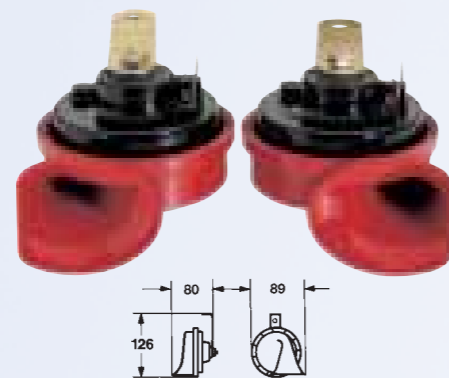
High-tone 840 Hz, low-tone 795 Hz

12 V 3PB 003 001-791¹

12 V 3PB 003 001-793²

24 V 3PB 003 001-831¹

24 V 3PB 003 001-833²



Electric twin-tone horn set, 12 V

Successful all over the world. Type-approved to EC directives. Two trumpets, solid metal housing, impact-resistant trumpets; complete set for mounting with relay and mounting brackets. Frequencies: High tone 500 Hz, low tone 400 Hz.

Fanfare sets, 12 V

(including relay)
3FH 007 424-801

without relay
3FH 007 424-811

Single trumpets

Low-tone 12 V, 400 Hz
3FG 007 424-001

High-tone 12 V, 500 Hz
3FG 007 424-011

Low-tone 24 V, 400 Hz, 114 mm dia.
3FG 002 924-161

High-tone 24 V, 500 Hz, 114 mm dia.
3FG 002 924-171

¹ = for export only

² = packed in box in Europe



Compressed air-horn

Air line with 10 mm Ø required. Low tone (400 Hz) for all vehicles with compressed air brake installation.

3PA 004 206-011

Compressed air-horn "Highway"

Two-tone compressed air-horn with chrome-plated housing. For all vehicles with compressed air brake installation.

3PB 005 411-001

Power suppliers

Ready to go in a flash – with the newly developed battery chargers from Hella!



Mini-Charger

8ES 006 266-011

Mini-Charger 6/12 V automatic

Suitable for gel batteries. Ideal for motorbike batteries. The safe charging electronics permits both automatic float and continuous charging as well as the charging of totally discharged motorbike batteries.

Technical data

- 230 Volt/50 Hz; 10 Watt
- Charging current at 6 Volt → 0.8 Amperes or at 12 Volt → 0.6 Amperes
- Automatic switch-off
- WU charge curve
- CE-tested



Power-Charger

8ES 004 417-041

Power-Charger 10 automatic

Suitable for gel batteries. Fully automatic battery charger for 12 Volt batteries. The safe charging electronics permits both automatic float and continuous charging as well as the charging of totally discharged batteries. The electronics switch the charging process off when the maximum battery cell voltage has been reached and switches it on again as soon as the battery voltage falls below this level. With quick-charge function from 7 to 10 Amperes.

Technical data

- 230 Volt/50 Hz; 130 Watt
- Normal charging 7 Amperes
- Quick charging 10 Amperes
- Automatic switch-off
- WU charge curve
- CE-tested



Turbo-Charger

8ES 004 417-031

Turbo-Charger

The powerful battery charger with booster function for 12 Volt batteries, thus making it possible to get totally discharged batteries ready to go in a flash. The booster function allows quick charging to take place on a high level. A quick charging process using 20 Amperes is possible within approx. 15 minutes. Goes particularly easy on the battery thanks to high initial charging current which is then reduced automatically.

Technical data

- 230 Volt/50 Hz; 350 Watt
- Normal charging 9 Amperes
- Quick charging 17 Amperes
- W charge curve
- CE-tested

Useful aids

Model Turbo

Two stage switch regulates the current of air. Can be swivelled in all directions and fixed in any position. 150 mm propeller is protected by a grille. Minimum service life 5000 hrs. (tested under extreme conditions). With 140 cm connecting cable. Air flow:

Stage 1 – 70 litres per sec.

Stage 2 – 95 litres per sec.

8EV 003 361-001 12 V

8EV 003 361-011 24 V



Model Jet

Powerful fan for a pleasant breeze or a powerful flow of air. 130 mm propeller. On/off switch on housing. With 1.5 m cable for permanent attachment/plug connection. Simple to fit. For side, upright or pendant mounting. Can be fixed in any position. Minimum service life 1500 hrs. (tested under extreme conditions). Air flow: 40 litres per sec.

8EV 006 239-001 12 V



www.hella.com

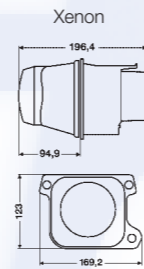


Customising Accessories / light modules 90 mm



Bi-xenon headlight 90 mm

Module headlights with integrated ignition unit and pattern-free glass cover lens. Dipped and high beam from a single headlight. High-quality metal reflector. Waterproof xenon electronic ballast of the 4th generation. 1.5 metres of shielded supply cable with separable plug connections.



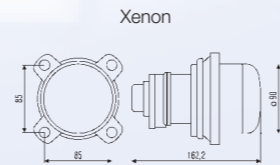
1AL 008 934-001	Bi-xenon headlight, 12V	ECE
1AL 008 934-021	Bi-xenon headlight, 24V	ECE

Use of xenon low beam light only permitted in conjunction with headlight levelling and lens cleaning systems.



Low beam headlight 90 mm

Module headlight with pattern-free glass cover lens. Minimum installation measurements for a discreet, convincing light design. Magnesium reflectors with small DE lens. Ideal in combination with matching driving and fog lights.



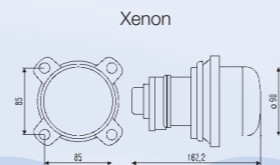
1BL 008 194-007	Xenon D2S	ECE
1BL 008 194-047	Xenon D2S	SAE
1BL 008 193-027	Halogen H9	SAE
1BL 008 193-007	Halogen H7	ECE

Xenon low beam light only permitted with headlight levelling and lens cleaning systems.



Driving light 90 mm

Module headlight with magnesium FF reflectors and clear lens. Can be ideally combined with the 90 mm low beam and fog lights. Xenon and halogen versions available.



1KO 008 192-007	Xenon D2S, with position light	ECE
1KO 008 191-017	Halogen H7	ECE
1KO 008 191-007	Halogen H7, with position light	ECE
1KO 008 191-137	Halogen H9, with position light	SAE
1KO 008 191-057	Halogen H9	SAE

Lens cleaning systems

The legislator prescribes the use of a lens cleaning system when xenon low beam headlights are used! Hella lens cleaning systems work on the water-jet principle, where the kinetic energy from large drops of water is used to blast the dirt particles off the lens and rinse them away. (Also suitable for halogen headlights).

8WS 008 549-001

Universal headlight levelling system

The ultrasonic system is a headlight levelling system that can be universally used for vehicles fitted with xenon headlights. The system comprises:

- a sensor mounted on the rear-end of the vehicle
- an electronic control unit
- a cable set and two setter motors

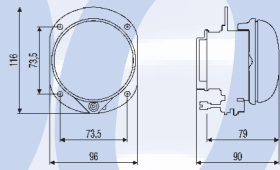
8XX 008 614-011 for 12 V system

Light modules from Hella – these are headlights and lights for a wide range of individual design versions.



Fog light 90 mm

Minimum installation measurements for a discreet, convincing light design. Aluminium reflectors with clear lens. Ideal in combination with the matching driving and low beam lights.



1NO 008 582-007 Halogen H7 ECE/SAE

ECE = Europe registration / SAE = USA registration



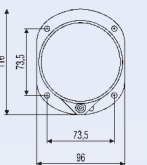
World premiere!

① **DynaView® Evo2** – cornering light, individual light with carrier frame, incl. 12 V H7 bulb

1NO 009 295-031	left
1NO 009 295-041	right

② **IntelliBeam®** control electronics

5DF 009 244-007



Further information about the new **DynaView® Evo2** can be found on **pages 8 and 9** as well as on the Internet: www.hella.de/dynaview



www.hella.com

Premium Headlight Modules



The most important advantages of the 50 mm Premium module headlights:

- Extremely compact dimensions with a light aperture of only 50 mm
- Excelling lighting performance and homogenous roadway illumination despite minimum design size
- Attractive, contemporary Premium design
- Great deal of design freedom to develop individual customer solutions within the framework of mandatory installation regulations
- Low weight thanks to the use of high-quality aluminium and magnesium
- Installation using installation frame and optional supporting frame, allowing adjustment from the front or rear
- Use behind specially developed cover lenses possible (photometric and type approval tests necessary)
- Driving lights with ECE and SAE type approval
- Low beam headlights available either with ECE or SAE type approval

Low beam headlights 50 mm

①	1BL 009 071-047	Xenon D2S, 12 V	ECE
	1BL 009 071-067	Xenon D2S, 24 V	ECE
	1BL 009 071-097	Xenon D2S, 12 V	SAE
②	1BL 009 071-007	Halogen H7, 12 V 55 W	ECE
	1BL 009 071-027	Halogen H7, 24 V 55 W	ECE
	1BL 009 071-087	Halogen H7, 12 V 55 W	SAE



New!

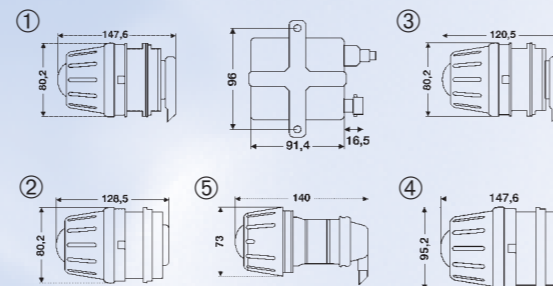
Driving lights 50 mm

③	1F0 008 390-317	Xenon D2S, 12 V, Ref. 17.5	ECE/SAE
	1F0 008 390-327	Xenon D2S, 24 V, Ref. 17.5	ECE/SAE
④	1KL 009 486-001*	Halogen H9, 12 V 65 W, Ref. 17.5	ECE/SAE

* available from 1st quarter 2006

Fog lights 50 mm

⑤	1NL 008 090-317	Halogen H3, 12 V 55 W	ECE/SAE
	1NL 008 090-327	Halogen H3, 24 V 55 W	ECE/SAE



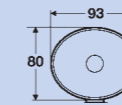
... Original Customising Accessories from Hella

LED



daytime running lights module with universal mounting bracket

2PT 008 935-011
incl. bulb 12V16W



Indicator light

for flush-fitting at the front clear-glass

① 2BA 009 001-071 (ECE)
incl. bulb PY21W

② 2BA 009 001-201 (ECE)
incl. silver-coloured bulb

③ 2BA 009 001-091 (SAE)
incl. bulb 1156A 24CP



Indicator light

for flush-fitting at the rear clear-glass

① 2BA 009 001-001 (ECE)
incl. bulb PY21W

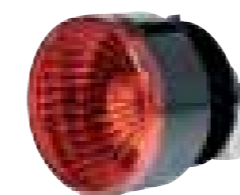
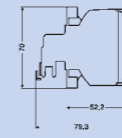
② 2BA 009 001-191 (ECE)
incl. silver-coloured bulb



Position light

clear-glass

2PF 009 001-081 (ECE/SAE)
incl. bulb P21W



Taillight red

2SA 009 001-041 (ECE)
incl. bulb R5W

Stoplight red

2DA 009 001-051 (ECE)
incl. bulb P21W

Tail/stoplight red

2SB 009 001-061 (ECE)
incl. bulb P21W/5W

Rear fog light red

2NE 009 001-021 (ECE)
incl. bulb P21W

Auxiliary reversing light

clear-glass (not illustrated)

2ZR 009 001-011
incl. bulb P21W



LED circular module Tail/stoplight

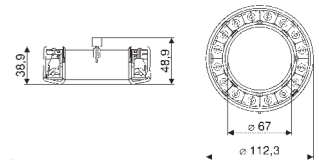
12 V

① 2SB 009 362-041 (ECE)
Lens red

② 2SB 009 362-021 (ECE)
Lens clear-glass
(with optional design ring)

24 V

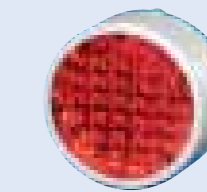
① 2SB 009 362-011 (ECE)
Lens red



Examples for combination possibilities

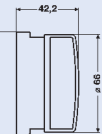
③ with red lens and indicator 2SB

2SB 009 362-041 and
2BA 009 001-191



Reflex reflector

8RA 009 001-031



Accessories

Design ring

silver, Ø 71,6 mm

9HB 161 122-007

Design ring for LED circular module

silver, Ø 118 mm

9HB 163 085-001

Adapter ring

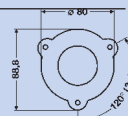
black

9XD 161 119-007

Snap-on ring

for front attachment (not illustrated)
No screws necessary.

8HG 162 530-002



All Premium headlights and light modules including bulbs

www.hella.com

It's the little things in life that count!



Light Power: More light.

Light Power H1 + 50 % / H4 + 50 % / H7 + 50 %. All the advantages at a glance:

- For more safety – up to 50 % more light
 - Easier to recognise danger and obstacles
 - Simple replacement in comparison to conventional bulbs
 - For optimised design: silver cap for clear glass headlights
- Up to 50 % more light is achieved through a smaller but longer filament which is positioned very exactly within the glass body.

ECE/DIN-Form	Volt	Watt	Socket	Specification	Part number
H1	12	55	P14,5s	plus 50	8GH 002 089-471
H1	12	55	P14,5s	plus 50/set	8GH 002 089-801
H4	12	60/55	P43t	plus 50	8GJ 002 525-471
H4	12	60/55	P43t	plus 50/set	8GJ 002 525-821
H7	12	55	PX26d	plus 50	8GH 007 157-471
H7	12	55	PX26d	plus 50/set	8GH 007 157-801



Magic Light: More design.

Blue Light: for trend-setting in headlights.

- Bulbs from Hella in the xenon look
- For a powerful design
- Only exchange in pairs when converting!

Magic Star: only amber when it flashes.

- For optimised design – clear and brilliant – only amber when it flashes
- Ideal for all clear-glass headlights with white or brilliant indicators
- Twice the service life of conventional amber bulbs
- Scratchproof coating
- Only exchange in pairs when converting!

ECE/DIN-Form	Volt	Watt	Socket	Specification	Part number
H1	12	55	P14,5s	Blue Light	8GH 002 089-141
H3	12	55	PK22s	Blue Light	8GH 002 090-371
H4	12	60/55	P43t	Blue Light	8GJ 002 525-361
H4	12	60/55	P43t	Blue Light set	8GJ 002 525-801
H7	12	55	PX26d	Blue Light	8GH 007 157-181
PY21W	12	21	BAU15s	Magic Star set	8GA 006 841-801

Quality Light: The large variety



Bulbs	Volt/Watt	Part number
Halogen H1	12 / 55	8GH 002 089-131
Halogen H1	24 / 70	8GH 002 089-251
Halogen H3	12 / 55	8GH 002 090-131
Halogen H3	24 / 70	8GH 002 090-251
Halogen H4	12 / 60/55	8GJ 002 525-131
Halogen H4	24 / 75/70	8GJ 002 525-251
Halogen H6	12 / 6	8GH 007 643-121
Halogen H7	12 / 55	8GH 007 157-121
Halogen H7	24 / 70	8GH 007 157-241
Halogen H8	12 / 35	8GH 008 356-121
Halogen H9	12 / 65 (not illustrated)	8GH 008 357-001
Halogen H11	12 / 55 (not illustrated)	8GH 008 358-121
Xenon D2R	GDL 35 W	8GS 007 001-121
Xenon D2S	GDL 35 W	8GS 007 949-101
Xenon D1S	GDL 35 W, with throttle	8GS 009 028-021

Lifetime: More life.

Lifetime bulbs from Hella. For heavy-duty conditions. Long service life thanks to a specially developed filament design or thanks to the krypton or xenon gas filling of the glass bulb.



ECE/DIN-Form	Volt	Watt	Socket	Specification	Part number
H1	12	55	P14,5s	LL	8GH 002 089-351
H1	24	70	P14,5s	HD	8GH 002 089-361
H4	12	60/55	P43t	LL	8GJ 002 525-481
H4	12	60/55	P43t	HD	8GJ 002 525-301
H4	24	75/70	P43t	LL	8GJ 002 525-491
H4	24	75/70	P43t	HD	8GJ 002 525-281
H4	12	60/55	P43t	LL/plus 30	8GJ 002 525-001
H7	12	55	PX26d	LL	8GH 007 157-201
HB3	12	60	P20d	LL	8GH 005 635-181
H21W	12	21	BAY9s	LL	8GH 008 417-001
H6W	12	6	BAX9s	LL	8GH 007 643-171
P21W	12	21	BA15s	LL	8GA 002 073-271
P21W	24	21	BA15s	HD	8GA 002 073-251
PY21W	24	21	BAU15s	Amber/HD	8GA 006 841-251
P21/5W	12	21/5	BAY15d	LL	8GD 002 078-221
P21/5W	24	21/5	BAY15d	HD	8GD 002 078-011
P21/4W	12	21/4	BAZ15d	LL	8GD 004 772-151
R5W	12	5	BA15s	LL	8GA 002 071-351
R5W	24	5	BA15s	HD	8GA 002 071-261
R10W	12	10	BA15s	LL	8GA 002 071-341
R10W	24	10	BA15s	HD	8GA 002 071-271
T4W	24	4	BA9s	HD	8GP 002 067-261
C5W	12	5	SV8,5	LL	8GM 002 092-171

Double Power: twice the power for 24 Volts

- 100 % longer service life thanks to the new single-coil bulb filament technology
- Better illumination and less glare
- Ideal for trucks



ECE/DIN-Form	Volt	Watt	Socket	Specification	Part number	UK number
H1	24	70	P14,5s	DP	8GH 002 089-491	HB 4665 C
H3	24	70	PK22s	DP	8GH 002 090-471	HB 4605 C
H4	24	75/70	P43t	DP	8GJ 002 525-511	HB 4755 C
H7	24	70	PX26d	DP	8GH 007 157-231	HB 175 C
H11	24	70	PGJ19-2		----- Under preparation -----	

Lightbox: More safety for on the road



Hella spares box H7, 12 V

Spares boxes	Volt	ECE/DIN-Form	Part number
Spares box	12	H1	8GH 002 089-921
Spares box	12	H4	8GJ 002 525-913
Spares box	12	H7	8GH 007 157-901
Spares box	12	H7	8GH 007 157-913
Spares box	12	H7/H1	8GH 007 157-951
Spares box	12	H7/HB3	8GH 007 157-921
Mini spares box	12	H1	8GH 002 089-941
Mini spares box	12	H4	8GJ 002 525-971
Mini spares box	12	H7	8GH 007 157-941
Spares box	24	H1	8GH 002 089-931
Spares box	24	H4	8GJ 002 525-941
Spares box	24	H7	8GH 007 157-931



BL = Blue Light
 HD = Heavy Duty
 LL = Long Life
 DP = Double Power

Lifetime

The full range for your car

Vehicle accessories	Model year	Part number
AUDI A2		
Repeater flasher lamp set (clear)	02/00 →	9EL 156 099-841
AUDI A3		
DE twin headlight set	09/96 → 08/00	1DL 008 522-801
Xenon twin headlight set	09/96 → 08/00	1DL 008 522-811
Repeater flasher lamp set (clear)	09/96 → 08/00	9EL 156 099-811
Repeater flasher lamp set (clear)	09/00 → 05/03	9EL 156 099-841
AUDI A4		
Repeater flasher lamp set (clear)	01/95 → 11/99	9EL 156 099-811
Repeater flasher lamp set (clear)	05/99 → 09/01	9EL 156 099-841
Design combination rearlight set (brilliant silver/red) except for Avant	11/00 → 10/04	9EL 008 330-801
AUDI A6 Saloon		
Lamp housing for rear panel (red), with reversing light, left and right and rear fog light, left	06/94 → 02/97	9EL 145 909-041
Repeater flasher lamp set (clear)	01/97 → 05/04	9EL 156 099-841
Lamp housing set for rear lamps (black)	01/97 → 05/04	9EL 007 727-801
Lamp housing set for rear lamps (brilliant silver)	01/97 → 05/04	9EL 007 727-811
AUDI A6 Avant		
Lamp housing for rear panel (red), with reversing light, left and right and rear fog light, left	06/94 → 12/97	9EL 145 909-041
Repeater flasher lamp set (clear)	03/98 →	9EL 156 099-841
AUDI A8		
Repeater flasher lamp set (clear)	→ 12/98	9EL 156 099-811
Repeater flasher lamp set (clear)	01/99 →	9EL 156 099-841
AUDI TT		
Repeater flasher lamp set (clear)	10/98 →	9EL 156 099-841
AUDI 80		
Indicator light (white), left	06/86 → 10/91	2BA 005 296-031
Indicator light (white), right	06/86 → 10/91	2BA 005 296-041
AUDI 100		
Flasher lamp (white), left	12/90 → 06/94	2BA 006 386-071
Flasher lamp (white), right	12/90 → 06/94	2BA 006 386-081
Lamp housing for rear lamp (red), left (except Avant)	12/90 → 06/94	9EL 138 567-061
Lamp housing for rear lamp (red), right (except Avant)	12/90 → 06/94	9EL 138 568-061
Lamp housing for rear panel (red), with reversing light, left and right and rear fog light, left (except Avant)	12/90 → 06/94	9EL 139 263-041
Lamp housing set for rear lamps (grey, except Avant)	12/90 → 06/94	9EL 006 080-801
BMW 3-series (E 30)		
Saloon, cabriolet, touring		
Flasher lamp (black), left (except M3)	09/87 → 06/94	2BA 007 275-031
Flasher lamp (black), right (except M3)	09/87 → 06/94	2BA 007 275-041
BMW 3-series (E 36)		
Saloon, coupé, cabriolet, compact, touring		
Upgrade		
DE headlight set	09/90 → 08/00	1AL 008 875-801
Upgrade		
Xenon headlight set (chrome)	09/90 → 08/00	1AL 008 875-821
Xenon headlight set (black)	09/90 → 08/00	1AL 008 875-851
Fog light retrofit set	09/90 → 08/00	1NB 006 270-801
Repeater flasher lamp set (clear)	09/90 → 09/96	9EL 156 099-831
Saloon		
Rear spoiler with integrated safety brake light	09/90 → 04/98	8XE 006 994-101*
BMW 3-series (E 46)		
Saloon		
Touring		
Upgrade headlight set with integrated cornering light	02/98 → 09/01	1AL 009 554-801
Fog light, left	10/99 → 09/01	1ND 007 646-011
Fog light, right		1ND 007 646-021
Flasher lamp (white), left		2BA 008 404-031
Flasher lamp (white), right		2BA 008 404-041
BMW 5-series (E 28)		
M5, 518i - 535i		
Repeater flasher lamp set (clear)	06/81 → 12/87	9EL 156 099-831
BMW 5-series (E 34)		
M5, 518i - 540i		
Headlight set (black)	01/88 → 01/97	1DL 006 020-801
Repeater flasher lamp set (clear)	01/88 → 01/97	9EL 156 099-831
Saloon 518i - 540i		
Rear lamp (red/white), left	01/88 → 11/95	2VA 005 553-131
Rear lamp (red/white), right		2VA 005 553-141
Saloon M5, 518i - 540i		
Rear spoiler with integrated safety brake light	01/88 → 11/95	8XE 006 192-101*

* available as long as stocks last

Vehicle accessories	Model year	Part number
BMW 5-series (E 39)		
520d - 540i		
Xenon headlight (black), left	11/95 → 08/00	1EL 007 410-091*
Xenon headlight (black), right	11/95 → 08/00	1EL 007 410-101*
Upgrade		
Headlamp for vehicles with halogen dipped beam as a standard fitting		
DE headlight with amber indicator lenses, the components listed below must be ordered:		
DE headlight, left	11/95 → 08/00	1EL 008 053-511
DE headlight, right		1EL 008 053-521
Set of leads		8KB 157 198-801
DE headlight with white indicator lenses the components listed below must be ordered:		
DE headlight, left	11/95 → 08/00	1EL 008 053-571
DE headlight, right		1EL 008 053-581
Set of leads		8KB 157 198-801
Upgrade		
Headlamp for vehicles with xenon dipped beam as a standard fitting		
Xenon headlight with amber indicator lenses, the components listed below must be ordered:		
Xenon headlight, left	11/95 → 08/00	1EL 008 052-511
Xenon headlight, right		1EL 008 052-521
Set of leads		8KB 157 198-801
Ballast (2 x) for vehicles - 08/98		5DV 007 760-651
Xenon headlight with white indicator lenses, the components listed below must be ordered:		
Xenon headlight, left	11/95 → 08/00	1EL 008 052-571
Xenon headlight, right		1EL 008 052-581
Set of leads		8KB 157 198-801
Ballast (2 x) for vehicles - 08/98		5DV 007 760-651
Xenon retrofitting in new facelift-look for vehicles with halogen dipped beam as a standard fitting		
Xenon headlight with amber indicator lenses, the components listed below must be ordered:		
Xenon headlight, left	11/95 → 08/00	1EL 008 052-511
Xenon headlight, right		1EL 008 052-521
Set of leads		8KB 157 198-801
Ballast (2 x)		5DV 007 760-651
Axle sensor		9XB 155 279-001
Lens cleaning system (if not fitted as a standard fitting)		8WS 008 316-001
Xenon headlight with white indicator lenses, the components listed below must be ordered:		
Xenon headlight, left	11/95 → 08/00	1EL 008 052-571
Xenon headlight, right		1EL 008 052-581
Set of leads		8KB 157 198-801
Ballast (2 x)		5DV 007 760-651
Axle sensor		9XB 155 279-001
Lens cleaning system (if not fitted as a standard fitting)		8WS 008 316-001
Indicator light set (white)	11/95 → 08/00	9ES 152 179-801
Indicator light set (black)	11/95 → 08/00	9ES 152 179-811
Saloon 520d - 540i		
Rear lamp (red/white), left	11/95 → 08/00	2VP 007 240-091
Rear lamp (red/white), right	11/95 → 08/00	2VP 007 240-101
CELIS® LED combination rearlight set (black/red)	11/95 → 08/00	2VP 008 272-821
CELIS® LED combination rearlight set (white/red)	11/95 → 08/00	2VP 008 272-861
CELIS® LED combination rearlight set (silver)	11/95 → 08/00	2SK 008 272-831
CELIS® LED combination rearlight set (white/red), left	09/00 → 07/03	2VP 008 272-211
CELIS® LED combination rearlight set (white/red), right	09/00 → 07/03	2VP 008 272-221
CELIS® LED combination rearlight set (black/red)	09/00 → 07/03	2VP 008 272-811
CELIS® LED combination rearlight set (brilliant silver)	09/00 → 07/03	2SK 008 272-801
BMW 5-Series (E 60) saloon		
Upgrade combination rearlight set (brilliant silver)	07/03 →	2SK 008 679-811
Upgrade combination rearlight set (brilliant/red)	07/03 →	2SK 008 679-831
Upgrade combination rearlight set (black)	07/03 →	9EL 008 679-841
CITROËN Jumper (244)		
H7 twin headlight set	04/02 →	1DL 008 945-891
Xenon twin headlight set	04/02 →	1DL 008 945-911
FIAT Ducato (244)		
H7 twin headlight set	04/02 →	1DL 008 945-891
Xenon twin headlight set	04/02 →	1DL 008 945-911
FIAT Punto I		
Flasher lamp (white), left	09/93 → 09/99	2BA 006 749-051
Flasher lamp (white), right	09/93 → 09/99	2BA 006 749-061
FORD Escort		
Flasher lamp (white), left	10/90 → 09/91	2BA 964 302-011
Flasher lamp (white), right	10/90 → 09/91	2BA 964 302-021
FORD Fiesta		
Micro DE fog light set	11/01 →	1NL 008 383-891
Flasher lamp set (white)	01/89 → 12/93	2BA 919 370-801

* available as long as stocks last

The full range for your car

Vehicle accessories	Model year	Part number
FORD Focus		
DE conversion set	10/98 → 09/01	1DL 008 367-801
DE conversion set Facelift	10/01 →	1DL 008 367-921
Xenon conversion set	10/98 → 09/01	1DL 008 367-831
Micro DE fog light set	10/98 → 09/01	1NL 008 383-831
Indicator conversion set (white)	10/98 → 09/01	2BA 008 467-801
Design combination rear lamp set (hatchback)	10/98 →	2SD 008 694-801
FORD Focus II		
Fog light set	10/04 →	1NO 009 436-811
DynaView® Evo2 cornering light set	10/04 →	1NO 009 436-821
FORD Galaxy		
Repeater flasher lamp set (grey)	03/95 → 06/00	9EL 147 073-801
MERCEDES-BENZ Actros 1996		
DE twin headlight set with indicators except vehicles with Megaspaces cab	09/96 → 10/02	1DL 008 609-871*
Xenon twin headlight set vehicles with Megaspaces cab and level control system	09/96 → 10/02	1DL 008 609-811
Lens cleaning system (if not fitted as a standard fitting)		8WS 008 623-001
Xenon twin headlight set except vehicles with Megaspaces cab, for vehicles with level control system only	09/96 → 10/02	1DL 008 609-831
Lens cleaning system (if not fitted as a standard fitting)		8WS 008 623-001
MERCEDES-BENZ Atego II 1823-2628		
DE twin headlight set with indicators	05/98 →	1DL 008 609-871*
Xenon twin headlight set without indicators	05/98 →	1DL 008 609-811
Lens cleaning system (if not fitted as a standard fitting)		8WS 008 623-001
Xenon twin headlight set with indicators	05/98 →	1DL 008 609-831
Lens cleaning system (if not fitted as a standard fitting)		8WS 008 623-001
MERCEDES-BENZ C Class (W 202)		
C 180 – C 280 (W 202), saloon		
Rear spoiler with integrated safety brake light	06/93 → 06/96	8XE 007 409-101*
MERCEDES-BENZ E Class (W 210)		
E 200 – E 430 (E Class, W 210), Saloon		
E 200 – E 430 (E Class, W 210), T-model	06/95 → 06/99	
Xenon headlight conversion set comprising the following components:		
Xenon headlight, left		1D9 007 380-091
Xenon headlight, right		1D9 007 380-101
Lens cleaning system		8WS 008 295-001*
MERCEDES-BENZ 190 (W 201)		
190 (W 201)		
Flasher lamp set (white)	10/82 → 08/93	2BA 004 257-801
Rear spoiler with integrated safety brake light		8XE 004 598-101*
MERCEDES-BENZ (W 124)		
200 – 500 (W 124), Saloon, Coupé, Cabriolet, T-model		
Flasher lamp set (white)	01/85 → 05/93	2BA 004 693-801
200 – 500 (W 124), Saloon, Coupé, Cabriolet		
Rear lamp (grey/red) with reversing light and rear fog light, left	01/85 → 05/93	2VP 004 686-151
Rear lamp (grey/red) with reversing light and rear fog light, right		2VP 004 686-181
MINI One, Cooper		
Driving light set Comet 200 Chromium	06/01 →	1F4 007 893-891
OPEL Astra G		
DE conversion set	03/98 →	1DL 008 521-811
Xenon conversion set	03/98 →	1DL 008 521-831
Main headlight (with black frame), left	03/98 →	1EG 007 640-391
Main headlight (with black frame), right	03/98 →	1EG 007 640-401
Main headlight (black), left	03/98 →	1EG 007 640-351
Main headlight (black), right	03/98 →	1EG 007 640-361
Xenon DE driving lamp set (except Coupé and Cabriolet)	03/98 →	1F0 008 671-821
Repeater flasher lamp set (clear)	03/98 →	9EL 156 099-821
Design combination rear lamp set with LED tail light (hatchback)	03/98 →	2VP 008 863-801
Rear spoiler with integrated side marker lamps (yellow, hatchback)	03/98 →	8XE 008 261-101*
OPEL Astra H		
Daytime running lights set (only 5-door hatchback)	03/04 →	2PT 009 305-821
Auxiliary indicator set (black)	03/04 →	2BM 964 998-801
Upgrade combination rearlight set (ice-grey) (GTC only)	03/04 →	2SK 008 748-801
OPEL Signum		
Main headlight (black), left	05/03 → 08/05	1EL 008 320-131
Main headlight (black), right	05/03 → 08/05	1EL 008 320-141
OPEL Vectra C		
Main headlight (black), left (notchback and estate)	04/02 → 08/05	1EL 008 320-131
Main headlight (black), right (notchback and estate)	04/02 → 08/05	1EL 008 320-141
OPEL Zafira		
Repeater flasher lamp set (clear)	04/99 → 06/05	9EL 156 099-821
Auxiliary indicator set (black)	07/05 →	2BM 964 998-801
Upgrade combination rearlight set (not painted)	04/99 → 06/05	2VP 009 360-801
Upgrade combination rearlight set Star Silver II edition	04/99 → 06/05	2VP 009 360-811
PEUGEOT Boxer (244)		
H7 twin headlight set	04/02 →	1DL 008 945-891
Xenon twin headlight set	04/02 →	1DL 008 945-911
RENAULT Scenic II/Grand Scenic		
Upgrade combination rear lamp, left	06/03 →	2SK 008 659-051
Upgrade combination rear lamp, right	06/03 →	2SK 008 659-061
SCANIA P 94 – T 164		
Xenon twin headlight set	01/96 →	1DL 008 735-811
Lens cleaning system (if not fitted as a standard fitting)		8WS 008 680-001
Headlamp levelling system		8XX 008 614-101

* available as long as stocks last

Vehicle accessories	Model year	Part number
SEAT Alhambra		
Repeater flasher lamp set (grey)	06/96 → 06/00	9EL 147 073-801
Repeater flasher lamp set (clear)	07/00 →	9EL 156 099-801
SEAT Arosa		
Repeater flasher lamp set (clear)	10/99 →	9EL 156 099-801
Design combination rear lamp set with circular reflex reflectors	05/97 →	2VP 008 409-801
SEAT Cordoba		
Fog light set (for 4-door)	03/93 → 03/97	1NA 961 557-801
Repeater flasher lamp set (grey)	03/93 → 05/99	9EL 147 073-801
Repeater flasher lamp set (clear)	06/99 → 10/02	9EL 156 099-811
SEAT Ibiza II		
Fog light set (for 5-door)	09/93 → 03/97	1NA 961 557-801
Repeater flasher lamp set (grey)	09/93 → 08/99	9EL 147 073-801
Rear lamp (grey/red), left	09/93 → 03/97	2VP 962 165-171
Rear lamp (grey/red), right	09/93 → 03/97	2VP 962 165-201
SEAT Ibiza III		
Repeater flasher lamp set (clear)	08/99 → 02/02	9EL 156 099-811
Design combination rear lamp set (brillant)	08/99 → 02/02	9EL 963 994-801
SEAT Inca		
Fog light set	01/96 →	1NA 961 557-801
SEAT Leon (1M1)		
Auxiliary indicator set (clear-glass)	11/99 → 09/05	9EL 156 099-801
SEAT Leon (1P1)		
Upgrade combination rearlight set (ice-grey)	09/05 →	2SK 982 000-821
SEAT Toledo I		
Flasher lamp (white), left	09/91 → 08/95	2BA 961 554-111
Flasher lamp (white), right	09/91 → 08/95	2BA 961 554-121
Lamp housing set for repeater flasher lamp (grey)	09/95 → 02/99	9EL 147 073-801
Lamp housing set for rear lamp (red), left	09/91 → 08/95	9EL 962 027-011
Lamp housing set for rear lamp (red), right	09/91 → 08/95	9EL 962 028-011
SEAT Toledo II		
Repeater flasher lamp set (clear)	03/99 →	9EL 156 099-801
SKODA Fabia		
Repeater flasher lamp set (clear)	01/00 →	9EL 156 099-811
SKODA Octavia		
Repeater flasher lamp set (clear)	04/97 →	9EL 156 099-811
Volkswagen Bora		
Micro DE fog light set with radio remote control system (except for TDI)	11/98 → 08/05	1NL 008 383-861
DE xenon driving light set (except for TDI)	11/98 → 08/05	1F0 008 671-801
Repeater flasher lamp set (clear)	11/98 → 08/05	9EL 156 099-801
Lamp housing for rear lamp (red/grey), left (saloon)	11/98 → 08/05	9EL 963 669-091
Lamp housing for rear lamp (red/grey), right (saloon)	11/98 → 08/05	9EL 963 670-091
Design combination rearlight set (black) (saloon)	11/98 → 08/05	9EL 963 561-801
Design combination rearlight set (silver) (saloon)	11/98 → 08/05	9EL 963 561-811
Volkswagen Corrado		
Repeater flasher lamp set (black)	09/91 → 07/95	2BM 006 759-801
Volkswagen Golf I		
Golf I		
Golf I Cabriolet		
Caddy I		
Flasher lamp set (white)		2BA 002 939-801
Flasher lamp set (black)		2BA 002 939-811
Repeater flasher lamp set (grey, Golf I Cabriolet)	09/91 → 08/93	2BM 006 759-801
Volkswagen Golf II		
Grille with driving lamps (except vehicles with air-conditioning → 07/86)	08/83 → 07/92	1F3 005 710-891
DE fog light (black), left (Golf II GL, GT, GTI)	09/89 → 07/92	1NL 006 315-111
DE fog light (black), right (Golf II GL, GT, GTI)	09/89 → 07/92	1NL 006 315-121
Flasher lamp set (white, except GL, GT, GTI 09/89 →)	08/83 → 07/92	2BA 002 939-801
Flasher lamp set (white, GL, GT, GTI)	09/89 → 07/92	2BA 006 728-801
Repeater flasher lamp set (yellow)	08/83 → 07/92	2BM 003 647-801
Repeater flasher lamp set (black)	08/83 → 07/92	2BM 006 759-801
Volkswagen Golf III		
Golf saloon		
Golf cabriolet		
Golf variant		
Main headlight (black), left	09/91 → 08/97	1DJ 006 360-711
Main headlight (black), right	08/93 → 05/98	1DJ 006 360-721
Main headlight set in a modern clear-glass design (chrome)	08/93 → 04/99	1DJ 008 187-801
Main headlight in a modern clear-glass design (chrome), left		1DJ 008 187-011
Main headlight in a modern clear-glass design (chrome), right		1DJ 008 187-021
Main headlight set in a modern clear-glass design (black)		1DJ 008 187-811
DE main headlight set (white) for vehicles with or without headlight levelling		1DL 007 385-801*
DE main headlight set (black) for vehicles with or without headlight levelling		1DL 007 385-811
CELIS® Upgrade main headlight set		1AL 009 213-801
Fog light set in white look including short covers		1NL 007 220-801
Fog light set with black indicators and black covers		1NL 006 480-821
Indicator set (white)		9EL 144 425-811
Flasher lamp set (black)		2BA 007 177-801
Design frontlighting set with daytime running light and clear-glass indicators		2PT 008 956-801
Auxiliary indicator set (black)	09/91 → 08/95	9EL 144 431-801
Auxiliary indicator set (black)	09/95 → 04/99	9EL 147 073-801

* available as long as stocks last

The full range for your car

Vehicle accessories	Model year	Part number
Volkswagen Golf III		
Golf cabriolet	06/98 →	
Main headlight (black, without fog light), left		1EJ 007 700-131
Main headlight (black, without fog light), right		1EJ 007 700-141
Main headlight (black, with fog light), left		1EL 007 700-151
Main headlight (black, with fog light), right		1EL 007 700-161
Upgrade main headlight set in the very latest design (with chrome-plated trim)		1EJ 009 292-801
Upgrade main headlight set in the very latest design (with basalt-grey trim)		1EJ 009 292-811
CELIS® Upgrade main headlight set (without fog light)		1EL 009 300-801
CELIS® Upgrade main headlight set (with fog light)		1EL 009 300-811
Golf Saloon	09/91 → 08/97	
Golf Cabriolet	08/93 →	
Golf Variant	08/93 → 04/99	
Lamp housing for rear lamp (grey/red), with reversing light and rear fog light, left (except Variant)		9EL 139 137-081
Lamp housing for rear lamp (grey/red), with reversing light and rear fog light, right (except Variant)		9EL 139 138-081
Design combination rearlight set (black) (except for estate)		9EL 006 220-851
Design combination rearlight set (ultramarine blue) (except for estate)		9EL 006 220-871
Design combination rearlight set (strato-silver) (except for estate)		9EL 006 220-931
Design combination rearlight set (red/grey/red) in the Golf IV look (except for estate)		9EL 006 220-901*
Design combination rearlight set (white/red) (except for estate)		9EL 006 220-921
Lamp housing for combination rear lamp (grey/red), with reversing light and rear fog light, left (for Variant)		9EL 142 825-031
Lamp housing for combination rear lamp (grey/red), with reversing light and rear fog light, right (for Variant)		9EL 142 826-031
Volkswagen Golf IV		
Golf Hatchback	09/97 →	
Golf Variant	05/99 →	
DE conversion set		1DL 008 494-811
Xenon conversion set (except for 4Motion)		1DL 008 494-831
Main headlight (black, without fog light), left		1EJ 007 700-131
Main headlight (black, without fog light), right		1EJ 007 700-141
Main headlight (black, with fog light), left		1EL 007 700-151
Main headlight (black, with fog light), right		1EL 007 700-161
Upgrade main headlight set in the very latest design (with chrome-plated trim)		1EJ 009 292-801
Upgrade main headlight set in the very latest design (with basalt-grey trim)		1EJ 009 292-811
CELIS® Upgrade main headlight set (without fog light)		1EL 009 300-801
CELIS® Upgrade main headlight set (with fog light)		1EL 009 300-811
Micro DE fog light set (except for GTI and TDI)		1NL 008 383-821
Micro DE fog light set with radio remote control system (except for GTI and TDI)		1NL 008 383-851
Daytime running light set (except for GTI)		2PT 009 305-811
Repeater flasher lamp set (clear)		9EL 156 099-801
Golf Hatchback	09/97 →	
Lamp housing for rear lamp (grey/red), left		9EL 148 179-031
Lamp housing for rear lamp (grey/red), right		9EL 148 180-031
Lamp housing for rear lamp (black/red), left		9EL 148 179-021
Lamp housing for rear lamp (black/red), right		9EL 148 180-021
Design combination rearlight set (black, brilliant-finish)		9EL 007 720-821
Design combination rearlight set (blue/white, brilliant-finish)		9EL 007 720-831
Design combination rearlight set (green/white, brilliant-finish)		9EL 007 720-841*
Design combination rearlight set (red/white, brilliant-finish)		9EL 007 720-851
Design combination rearlight set (silver, brilliant-finish)		9EL 007 720-871
Design combination rear lamp set in clear-glass look with brilliant finish (silver)		9EL 008 980-801
Design combination rear lamp set in clear-glass look with brilliant finish (black)		9EL 008 980-811
Volkswagen Golf V		
Main headlight set (black)	05/04 →	1EG 247 007-871
Upgrade main headlight with lentil-shaped look, left	10/03 →	1EL 009 476-011
Upgrade main headlight with lentil-shaped look, right	10/03 →	1EL 009 476-021
DynaView® Evo2 cornering light set (except for GTI)	10/03 →	1NO 009 436-801
Micro DE fog light set with radio remote control system (except for GTI)	10/03 →	1NL 008 383-911
Daytime running lights set in clear-glass design (except for GTI)	10/03 →	2PT 009 305-801
LED Upgrade combination rearlight set (silver/red)	10/03 →	2SK 009 500-801
Upgrade combination rearlight set (dark red)	10/03 →	2SD 009 597-801
Volkswagen Golf V Plus		
LED Upgrade combination rearlight set (ice-grey)	01/05 →	2SK 009 961-811
LED Upgrade combination rearlight set (blue)	01/05 →	2SK 009 961-821
Volkswagen Jetta II		
Fog light (black), left	09/89 → 12/91	1NL 006 315-111
Fog light (black), right	09/89 → 12/91	1NL 006 315-121
Flasher lamp set (white)	02/84 → 08/89	2BA 002 939-801
Flasher lamp set (black)	02/84 → 08/89	2BA 002 939-811
Flasher lamp set (white)	09/89 → 12/91	2BA 006 728-801
Repeater flasher lamp set (yellow)	02/84 → 12/91	2BM 003 647-801
Repeater flasher lamp set (grey)	02/84 → 12/91	2BM 006 759-801
Volkswagen Jetta		
Main headlight set (black)	08/05 →	1EG 247 007-871
Volkswagen Lupo		
Repeater flasher lamp set (clear)	05/98 →	9EL 156 099-801
Design combination rearlight set	05/98 →	2VP 008 409-801
Volkswagen New Beetle		
Rear spoiler with integrated silver coloured side marker lamps	01/98 →	8XE 008 451-101
Alternative: Side marker lamp in Magic Colours with black trim	01/98 →	2PS 008 050-017
Volkswagen Passat B3		
Main headlight set (white) for vehicles with or without headlight levelling (except for vehicles with air conditioning systems)	04/88 → 08/93	1DL 006 383-801
Main headlight set (black) with indicators for vehicles with or without headlight levelling (except for vehicles with air conditioning systems)	04/88 → 08/93	1DL 006 383-831
Flasher lamp set (white)	04/88 → 08/93	2BA 005 457-801
Repeater flasher lamp set (yellow)	04/88 → 08/93	2BM 006 409-801*

* available as long as stocks last

Vehicle accessories	Model year	Part number
Volkswagen Passat B4		
Fog light set	09/93 → 05/97	1NA 006 790-811
Lamp housing set for repeater flasher lamps (grey)	09/93 → 05/97	9EL 147 073-801
Lamp housing for rear lamp (grey/red), left (saloon)	09/93 → 09/96	9EL 141 889-041
Lamp housing for rear lamp (grey/red), right (saloon)	09/93 → 09/96	9EL 141 890-041
Lamp housing for rear fog-reversing lamp (grey/red), left (saloon)	09/93 → 09/96	9EL 141 907-081
Lamp housing for rear fog-reversing lamp (grey/red), right (saloon)	09/93 → 09/96	9EL 141 908-081
Volkswagen Passat B5		
Daytime running light kit	10/96 → 11/00	2PT 008 816-811*
Repeater flasher lamp set (clear)	10/96 → 11/00	9EL 156 099-801
Volkswagen Passat B6		
Micro DE fog light set with radio remote control system	11/00 →	1NL 008 383-871
Xenon DE driving lamp set	11/00 →	1FO 008 671-811
Repeater flasher lamp set (clear)	11/00 →	8EL 156 099-801
Upgrade combination rearlight set (black/red)	11/00 →	2SD 009 598-801
Volkswagen Polo II		
Flasher lamp set (white)	09/81 → 09/90	2BA 002 939-801
Flasher lamp set (black)	09/81 → 09/90	2BA 002 939-811
Flasher lamp set (white)	10/90 → 09/94	2BA 006 334-801
Repeater flasher lamp set (yellow)	10/90 → 09/94	2BM 003 647-801
Repeater flasher lamp set (grey)	10/90 → 09/94	2BM 006 759-801
Lamp housing for rear lamp (black/red), with rear fog light, left (Polo II Coupé)	10/90 → 09/94	9EL 144 376-011
Lamp housing for rear lamp (black/red), with reversing light, left (Polo II Coupé)	10/90 → 09/94	9EL 144 376-021
Volkswagen Polo III		
Polo III with big bumper (except Classic and Variant)		
Fog light, left	10/94 → 09/99	1NA 962 530-011
Fog light, right	10/94 → 09/99	1NA 962 530-021
Polo III with small bumper (except Classic and Variant)		
Fog light, left	10/94 → 09/99	1NA 962 490-011
Fog light, right	10/94 → 09/99	1NA 962 490-021
Polo III (except GTI, Classic and Variant)		
Fog light, left	10/99 → 10/01	1NA 963 981-031
Fog light, right	10/99 → 10/01	1NA 963 981-041
Polo III		
Repeater flasher lamp set (clear)	10/99 → 10/01	9EL 156 099-801
Polo III (except Classic and Variant)		
Flasher lamp set (white)	10/94 → 09/99	2BA 962 625-821
Flasher lamp set (black)	10/94 → 09/99	2BA 962 625-831
Flasher lamp set (ultramarine blue)	10/94 → 09/99	2BA 962 625-801
Flasher lamp set (black)	10/99 → 10/01	9EL 963 925-801
Polo III		
Auxiliary indicator light set (black)	10/94 → 09/99	9EL 147 073-801
Polo III (except Classic and Variant)		
Lamp housing for rear lamp (grey/red), with rear fog light, left	10/94 → 09/99	9EL 962 541-071
Lamp housing for rear lamp (grey/red), with reversing light, right	10/94 → 09/99	9EL 962 542-061
Design combination rearlight set with LED taillight (black)	10/94 → 09/99	2VP 964 087-881
Design combination rearlight set with LED taillight (silver)	10/94 → 09/99	2VP 964 087-891
Design combination rearlight set with LED taillight (black)	10/99 → 10/01	9EL 964 087-801
Design combination rearlight set with LED taillight (silver)	10/99 → 10/01	9EL 964 087-811
Rear spoiler with integrated LED high-mounted safety stoplight (white)	07/96 → 09/99	8XE 008 029-101*
Volkswagen Polo IV		
Main headlight (black), left	04/05 →	1EE 247 019-211
Main headlight (black), right	04/05 →	1EE 247 019-221
Repeater flasher lamp set (clear)	11/01 →	9EL 156 099-801
Upgrade combination rearlight set (black)	11/01 →	2VA 965 303-801
Upgrade combination rearlight set (brilliant)	11/01 →	2VA 965 303-811
Upgrade combination rearlight set (red)	11/01 →	2VA 965 303-821
Volkswagen Sharan		
Auxiliary indicator set (black)	05/95 → 06/00	9EL 147 073-801
Repeater flasher lamp set (clear)	07/00 →	9EL 156 099-801
Volkswagen Touran		
Design combination rear lamp set with clear-glass look (grey/silver/red)	02/03 →	9EL 008 759-811
Volkswagen Vento		
Fog light set in white look including short covers	01/92 → 10/98	1NL 007 220-801
Fog light set with black indicators and black covers	01/92 → 10/98	1NL 006 480-821
Indicator light set (white)	01/92 → 10/98	9EL 144 425-811
Flasher lamp set (black)	01/92 → 10/98	2BA 007 177-801
Design frontlighting set with daytime running lights and clear-glass indicators	01/92 → 10/98	2PT 008 956-801
Auxiliary indicator set (black)	01/92 → 08/95	9EL 144 431-801
Auxiliary indicator set (black)	09/95 → 10/98	9EL 147 073-801
Lamp housing for rear lamp (grey/red), left	01/92 → 10/98	9EL 140 413-041
Lamp housing for rear lamp (grey/red), right	01/92 → 10/98	9EL 140 414-041
Lamp housing for rear fog-reversing lamp (grey/red), left	01/92 → 10/98	9EL 140 431-061
Lamp housing for rear fog-reversing lamp (grey/red), right	01/92 → 10/98	9EL 140 432-061
Volkswagen Transporter (T4)		
California, Caravelle, Multivan 09/90 → 12/95, Transporter 09/90 →		
Flasher lamp set (black)	09/90 →	2BA 006 049-801
Volkswagen Transporter (T5)		
California, Multivan, Transporter with one-piece tailgate		
Design combination rearlight, left (red/black/red)	04/03 →	2SK 008 579-151
Design combination rearlight, right (red/black/red)	04/03 →	2SK 008 579-161

* available as long as stocks last