



Ideas today for  
the cars of tomorrow

# Product News

Latest Additions to the Hella Australia Range

01/09

## Comet FF 50 and Comet FF 75 Cool Blue Driving Lamps

Striking 'Cool Blue' design in compact form

Following the worldwide success of Comet FF 50 and Comet FF 75 Series Driving Lamps, Hella has launched new and innovative 'Cool Blue' lens versions of this compact and versatile range of driving lamps.

Comet FF 50 and Comet FF 75 Blue Driving Lamps successfully combine stylish design and individual appearance with compact overall dimensions. This winning combination allows motorists to significantly upgrade both the overall lighting performance and front-end appearance of vehicles with limited mounting space.

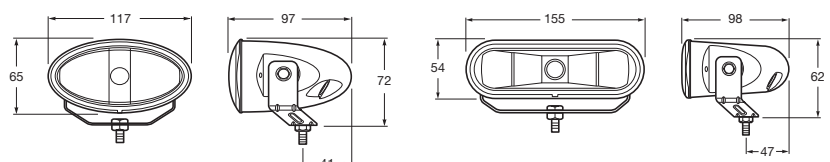
The innovative rounded contours and blue tinted lens give Comet FF driving lamps a striking and individual appearance without reducing their proven luminous efficiency. As long as the lamps are equipped with colourless globes, the light output colour remains white.

Comet FF 50 and Comet FF 75 Series driving lamps are state-of-the-art featuring modern pattern-free glass lens and die-cast aluminium free-form (FF) reflectors for optimum light output and distribution on the road ahead. The use of high-quality materials for both housing and mounting bracket ensure superior durability and long service life.

All Comet FF Series driving lamps offer universal application and are easy to install thanks to their low profile design and versatile metal mounting bracket.

### Key Features

- β Distinctive compact design
- β Modern blue tinted, pattern-free glass lens
- β Free-form (FF) lighting technology for optimum light distribution
- β Universal mounting bracket for easy installation
- β Extremely durable housing and metal bracket
- β Powerful H7 halogen globe



**:: Comet FF 50 Series**

**1322BLUE**

**Driving Lamp - Blue · 12V**

**ADR**

**5613BLUE**

**Driving Lamp Kit - Blue · 12V**

**ADR**



**Description** Compact Driving Lamps in modern 'Cool Blue' design featuring die-cast magnesium free-form (FF) reflector and blue tinted lens. Light colour remains white when used with colourless globes. Kit includes 2 x lamps and all parts required for installation.

**Voltage** 12V (globe included)

**Wattage** 55W

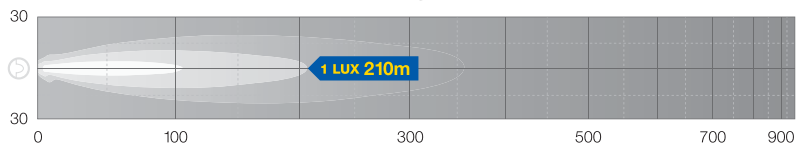
**Mounting** Upright or pendant

**Globes to suit** 12V H7 (CA1255)  
 24V H7 (CA2470)

**Caution** Suitable for colourless globes only.

**Note** Fully compliant with 3<sup>rd</sup> Edition ADR 46/00 High Beam Headlamp.

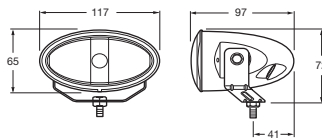
**1322BLUE Comet FF 50 Blue Series Halogen 55W Beam**



8147

**Accessory**

**8147** Clear Protective Cover



**:: Comet FF 75 Series**

**Driving Lamp - Blue · 12V**

ADR

**1323BLUE**

**Driving Lamp Kit - Blue · 12V**

ADR

**5615BLUE**

**Description** Compact Driving Lamps in modern 'Cool Blue' design featuring die-cast magnesium free-form (FF) reflector and blue tinted lens. Light colour remains white when used with colourless globes. Kit includes 2 x lamps and all parts required for installation.

**Voltage** 12V (globe included)

**Wattage** 55W

**Mounting** Upright or pendant

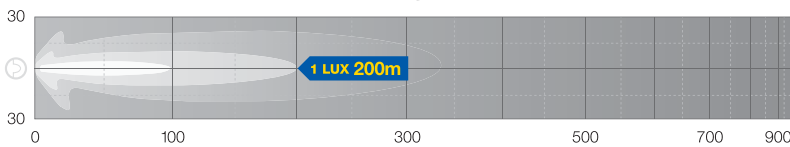
**Globes to suit** 12V H7 (CA1255)  
24V H7 (CA2470)

**Caution** Suitable for colourless globes only.

**Note** Fully compliant with 3<sup>rd</sup> Edition ADR 46/00 High Beam Headlamp.



**1323BLUE Comet FF 75 Blue Series Halogen 55W Beam**

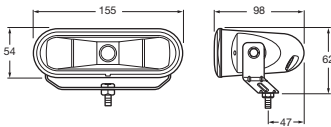


**Accessory**

**8148** Clear Protective Cover



8148



**:: LED Front Direction Indicators**

**2105CLR**

**500 Series LED Front Direction Indicator Module - Amber Illuminated**

**ADR**



**Description** Low profile LED front direction indicator module specifically designed for commercial transport applications. Features high-intensity LEDs and clear polycarbonate lens for superior light output and impact resistance. Designed to upgrade existing Front Direction Indicators 2128, 2135 and 2136. Fully sealed to withstand high-pressure washing. **Optic appears clear until illuminated.**

**Voltage** Multivolt™ (9-33V DC)

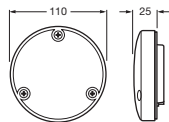
**Wattage** 4W

**Mounting** Flush mount (3 x mounting screws included)

**Lead Length** 20 centimetres

**Protection** Reverse Polarity and 1.5kW Transient Voltage Suppressor (TVS). Sealed against dust and water ingress.

**Note** Fully compliant with 3<sup>rd</sup> Edition ADR 6/00 Cat. 1 Front Direction Indicator Lamp.



**2128LEDCLR**

**500 Series LED Front Direction Indicator - Amber Illuminated**

**ADR**



**Description** LED Front Direction Indicator fitted with high-intensity LED module, Part No. 2105CLR, and black housing. Fully sealed to withstand high-pressure washing. **Optic appears clear until illuminated.**

**Voltage** Multivolt™ (9-33V DC)

**Wattage** 4W

**Mounting** Single bolt mount (seals, grommets and screws included)

**Lead Length** 20 centimetres

**Protection** Reverse Polarity and 1.5kW Transient Voltage Suppressor (TVS). Sealed against dust and water ingress.

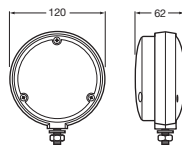
**Note** Fully compliant with 3<sup>rd</sup> Edition ADR 6/00 Cat. 1 Front Direction Indicator Lamp.

**Spare Parts**

**2105CLR** LED module, amber illuminated

**9.2397.40** Lens gasket

**2.6702.03** Backing plate



**:: LED Front Direction Indicators**

**500 Series LED Front Direction Indicator - Amber Illuminated · Black Housing**

ADR

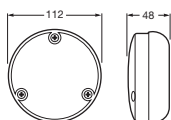
**2135LEDCLR**

<b>Description</b>	LED Front Direction Indicator fitted with high-intensity LED module, Part No. 2105CLR, and black base. Fully sealed to withstand high-pressure washing. <b>Optic appears clear until illuminated.</b>
<b>Voltage</b>	Multivolt™ (9-33V DC)
<b>Wattage</b>	4W
<b>Mounting</b>	Surface mount (seals, grommets and screws included)
<b>Lead Length</b>	20 centimetres
<b>Protection</b>	Reverse Polarity and 1.5kW Transient Voltage Suppressor (TVS). Sealed against dust and water ingress.
<b>Note</b>	Fully compliant with 3 <sup>rd</sup> Edition ADR 6/00 Cat. 1 Front Direction Indicator Lamp.



**Spare Parts**

<b>2105CLR</b>	LED module, amber illuminated
<b>9.2397.40</b>	Lens gasket



**500 Series LED Front Direction Indicator - Amber Illuminated · Chrome Housing**

ADR

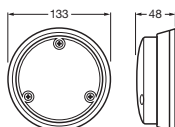
**2136LEDCLR**

<b>Description</b>	LED Front Direction Indicator fitted with high-intensity LED module, Part No. 2105CLR, and chromed rim. Fully sealed to withstand high-pressure washing. <b>Optic appears clear until illuminated.</b>
<b>Voltage</b>	Multivolt™ (9-33V DC)
<b>Wattage</b>	4W
<b>Mounting</b>	Surface mount (seals, grommets and screws included)
<b>Lead Length</b>	20 centimetres
<b>Protection</b>	Reverse Polarity and 1.5kW Transient Voltage Suppressor (TVS). Sealed against dust and water ingress.
<b>Note</b>	Fully compliant with 3 <sup>rd</sup> Edition ADR 6/00 Cat. 1 Front Direction Indicator Lamp.



**Spare Parts**

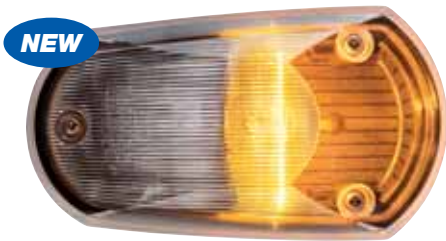
<b>2105CLR</b>	LED module, amber illuminated
<b>9.2397.40</b>	Lens gasket



**:: Side Direction Indicator**

**2155CLR**

**Cat. 6 Supp. Side Direction Indicator - Amber Illuminated** ADR



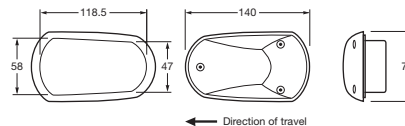
<b>Description</b>	Side mounted direction indicator with clear lens suitable for left or right hand mounting. <b>Optic appears clear until illuminated.</b>
<b>Voltage</b>	Globe to be ordered separately
<b>Mounting</b>	Flush mount. If mounted in non-splashwater-protected areas, wiring harness set Part No. 9.2155.05 must be used for installation.
<b>Globes to suit</b>	12V (RY1221) Bayonet base 24V (RY2421LL) Bayonet base
<b>Caution</b>	Arrow on lens must face direction of travel.
<b>Note</b>	Fully compliant with 3 <sup>rd</sup> Edition ADR 6/00 Cat. 6 Side Direction Indicator Lamp. Replacing ADR 6/00 Cat. 5 Supp. Side Direction Indicator Lamps with ADR 6/00 Cat. 6 Supp. Side Direction Indicator Lamps is permitted in all instances.



9.2155.05

**Accessory**

**9.2155.05** Wiring harness set (with sealing grommet)



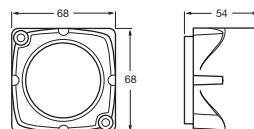
**:: Relay**

**3099**

**Voltage Sensitive Relay Module** ADR



<b>Description</b>	Voltage Sensitive Relay (VSR) module for simultaneous dual battery charging (start and auxiliary). Engages when the engine is started and the start battery reaches 13.7 volts and disengages when the voltage drops below 12.8 volts. Eliminates the possibility of draining the start battery and protects sensitive electronic equipment powered by the auxiliary battery from harmful engine start-up spikes.
<b>Voltage</b>	12V DC
<b>Max. Load</b>	140A continuous
<b>Mounting</b>	Surface or recess mount
<b>Termination</b>	2 x 6mm studs



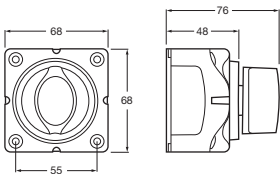
**:: Battery Master Switches**

**Battery Selector Switch**



**4723**

<b>Description</b>	Compact selector switch with tin plated copper studs and nuts. Isolates and selects from or combines two power sources.
<b>Voltage</b>	48V DC (max.)
<b>Max. Load</b>	1000A for up to 10 seconds 200A continuous
<b>Function</b>	4 position switch (off - 1 - 2 - both)
<b>Mounting</b>	Surface or recess mount
<b>Termination</b>	3 x 8mm (5/16") studs



**Battery Master Switch - Remote Operated**

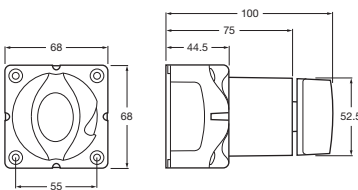


**4724**

<b>Description</b>	Battery switch with tin plated copper studs and nuts. Can be operated manually or remotely with a separate switch (not supplied). Suitable for mounting alongside battery reducing cable lengths to starter motor. Supplied with removable key.
<b>Voltage</b>	9.5 - 32V DC
<b>Power</b>	2W at 12V DC when operating 0.25W static
<b>Max. Load</b>	1250A for up to 10 seconds 275A continuous
<b>Function</b>	2 position switch (on - off)
<b>Mounting</b>	Surface or recess mount
<b>Termination</b>	2 x 10mm (3/8") studs



Connector



**:: Fuse Box**

**8725**

**Blade Fuse Box - 6 Fuses**

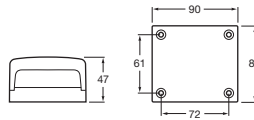


**NEW**



**Description** Black polycarbonate housing with transparent snap-fit lid and 6.3mm male blade terminals. 6mm diameter stud input. Supplied with 2 spare fuse holders and label set.

**Fuse Types** 3 x 10A  
 3 x 15A



**:: Installation Equipment**

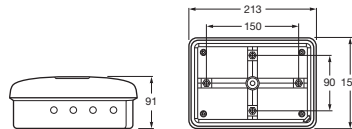
**2755**

**Junction Box**

**NEW**



**Description** Heavy-duty nylon junction box with internal mounting plate for fitment of connector blocks and/or relays by means of self-tapping screws. Box can be opened without special tools using a single stainless steel bolt. Large sealing gasket withstands high-pressure washing. Suitable for multiple connections.

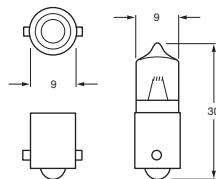


**:: Halogen Miniature Globe**

**NEW**



	Voltage	Wattage	Base	ADR 51/00 Category	UV Cut
<b>YL1210</b>	12V	10W	BA9s	-	•



## :: Latest Additions to the Hella Australia Range

### :: DuraLed® Lamp Accessories

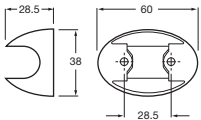
#### DuraLed® Nylon Housing - Black

9.2053.08

#### DuraLed® Nylon Housing - Black (Pack of 4)

9.2053.08BULK

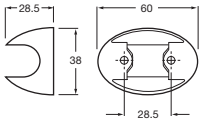
**Description** Extremely durable nylon housing to suit all surface mount DuraLed® Series signal and marker lamps. Designed to allow for the lamp insert to pass through from the rear, which enables retrofitting of installed lamps without having to reinstall the lamp wiring.



#### DuraLed® Housing - Amber (Pack of 4)

9.2053.15BULK

**Description** Spare amber housing to suit all surface mount DuraLed® Series marker and courtesy lamps.



#### DuraLed® Screw Cap - Red (Pack of 4)

9.2330.10

#### DuraLed® Screw Cap - White (Pack of 4)

9.2330.11

#### DuraLed® Screw Cap - Blue (Pack of 4)

9.2330.12

#### DuraLed® Screw Cap - Green (Pack of 4)

9.2330.13

#### DuraLed® Screw Cap - Yellow (Pack of 4)

9.2330.14

#### DuraLed® Screw Cap - Black (Pack of 4)

9.2330.15

#### DuraLed® Screw Cap - Amber (Pack of 4)

9.2330.16

**Description** Spare screw caps to suit all DuraLed® Series signal and marker lamps. Two screw caps required per lamp.



## :: DuraLed® Lamp Accessories

9.2330.17

### DuraLed® Screw Boss (Pack of 4)



**Description** Spare screw boss to suit all DuraLed® Series signal and marker lamps. Two screw bosses required per lamp.

## :: EuroLED® Lamp Accessories

9HD959027007

### EuroLED® Cover - Black

9HD959027017

### EuroLED® Cover - White



**Description** Spare covers to suit all EuroLED® Series signal and interior lamps. One cover required per lamp.

9NH959028017

### EuroLED® Screw Boss



**Description** Spare screw boss to suit all EuroLED® Series signal and interior lamps. Two screw bosses required per lamp.

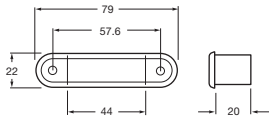
**:: LED Licence Plate Lamp Accessories**

**LED Licence Plate Lamp Insert**

ADR

**9.2559.01**

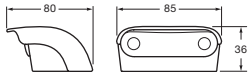
<b>Description</b>	LED insert to suit LED Licence Plate Lamp, Part No. 2559.
<b>Voltage</b>	Multivolt™ (10-33V DC)
<b>Wattage</b>	0.5W
<b>Mounting</b>	Flush mount (gasket and screw caps included)
<b>Lead Length</b>	2.5 metres
<b>Protection</b>	Fully sealed against dust and moisture to IP67.
<b>Note</b>	Fully compliant with 3 <sup>rd</sup> Edition ADR 48/00 Licence Plate Lamp when fitted to the 2559 Licence Plate Lamp housing or equivalent customer fabricated structure and mounted in accordance with Hella's ADR mounting instructions.



**Mounting Kit - White**

**9.2559.19**

<b>Description</b>	Mounting Kit for rectangular LED courtesy lamps. Includes base, cover, 2 screw bosses and screw caps.
<b>Suits</b>	Part No. 2559, 2308, 2055 and all narrow rim LED courtesy lamps.







**LED Licence Plate Lamp Mounting Kit**

**8HG959647001**

<b>Description</b>	Mounting kit including base, cover, spacer and extended screw bosses for installation of LED Licence Plate Lamps according to ADR requirements. One kit required per lamp.
--------------------	--



### :: LED Lamp Accessories

	<b>9HD959182007</b>	<b>Plastic Screw Cap - Clear</b>
	<b>9HD959182017</b>	<b>Plastic Screw Cap - Amber</b>
	<b>9HD959182027</b>	<b>Plastic Screw Cap - Red</b>
	<b>9HD959182037</b>	<b>Plastic Screw Cap - Black</b>

**Description** Spare plastic screw caps to suit all rectangular LED courtesy lamps. Two screw caps required per lamp.



<b>9GD959517007</b>	<b>Wide Rim Seal</b>
<b>9GD959515127</b>	<b>Narrow Rim Seal</b>

**Description** Spare wide and narrow rim seals to suit rectangular LED courtesy lamps. One seal required per lamp.



<b>9GD959155107</b>	<b>Matrix Narrow Rim Seal</b>
<b>9GD959155507</b>	<b>Matrix Wide Rim Seal</b>

**Description** Spare narrow and wide rim seals to suit Matrix Series LED signal and courtesy lamps. One seal required per lamp.

**Suits**

Narrow Rim	5243, 2334, 2334-24V, 2156 and 2156-24V
Wide Rim	95907360, 95907365, 95907370, 95907375, 2641-12V and 2641-24V

