



**Ideas today for
the cars of tomorrow**

Product News

Latest Additions to the Hella Australia Range

04/09

New Power Beam 1000 Series LED Work Lamps

Powerful and energy efficient workspace lighting

Hella remains on the cutting edge of innovative lighting technology with the release of its new Power Beam 1000 Series LED Work Lamp, setting new design and technology standards for agricultural and construction machinery.

Equipped with 6 high-performance LEDs positioned in a high-sheen, metallised free-form (FF) reflector, Power Beam 1000 LED Work Lamps deliver long lasting and powerful light output rated at 850 lumens, achieving a consistent close-range illumination that is very similar to daylight (6500°K) without harsh contrasts.

Power Beam 1000 LED Work Lamps consume only 18 watts of power in total, a significant current draw reduction of more than 80% compared to traditional halogen work lamps. This results in minimal strain on both alternator and battery, making LED work lamps the ideal lighting solution for work machinery with low alternator performance or battery-assisted power supply. Hella Multivolt™ electronics ensure a consistent level of intensity at any input voltage between 9 and 33 volts and can be connected to either 12 or 24-volt systems without modification.

In addition to minimum current draw requirements, Power Beam 1000 LED Work Lamps offer superior functional safety and operating reliability. Unlike conventional halogen globes, LEDs are resistant to shock and vibration and last for a minimum of 10,000 hours, eliminating the risk of sudden light failure during operation.

Power Beam 1000 LED Work Lamps are extremely durable and well suited for heavy-duty applications, such as agricultural and construction machinery, trucks, trailers and municipal vehicles. The hardened glass lens, robust die-cast aluminium housing and stainless steel bracket provide optimum corrosion resistance and maximum protection from damage. In addition, Power Beam 1000 LED Work Lamps are available with heavy-duty trunnion bracket for the most extreme work environments and also with PMMA (acrylic) lens for additional protection in food processing and agricultural applications.

Key Features

- Equipped with 6 high-performance LEDs
- Powerful white light output (850 lumens)
- Ultra low power consumption
- Robust aluminium die-cast housing
- Integrated DT socket
- Fully sealed to IP6K7 and IP6K9K



:: Power Beam 1000 Series

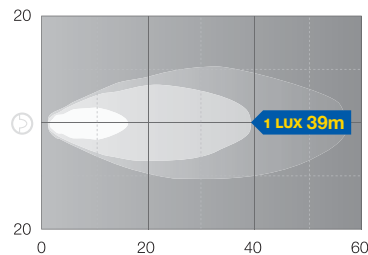
1551LED	LED FF Work Lamp - Close Range · 9-33V DC
1551LEDHD	LED FF Work Lamp - Close Range · 9-33V DC · HD Bracket
1551LEDPMMA	LED FF Work Lamp - Close Range · 9-33V DC · PMMA Lens



Description Equipped with 6 high-performance LEDs (6500°K) for powerful white light output rated at 850 lumens. Features robust aluminium die-cast housing, stainless steel bracket and free-form (FF) reflector with clear glass lens for a consistent close-range illumination. Integrated DT socket electrical connection. **Also available with heavy-duty trunnion bracket or with plastic PMMA lens** for additional protection in food processing and certain agricultural applications.

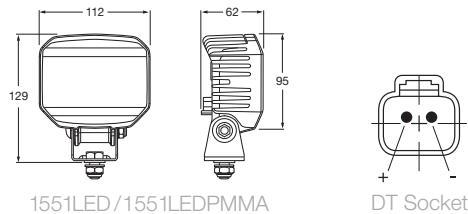
Voltage	Multivolt™ (9-33V DC)
Wattage	18W
Mounting	Stainless steel bracket for upright or pendant mounting (heavy-duty trunnion bracket lamp option available).
Lead Length	2.5 metres twin-core sheathed cable with DT plug.
Temperature Range	-40°C to +50°C
Protection	Reverse Polarity and Transient Voltage Suppressor (TVS). Fully sealed against dust and moisture to IP6K7 and IP6K9K.

Power Beam 1000 LED 2.0m high at 10°



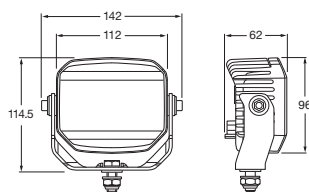
Accessories

- 9.1551LED.06** DT pigtail loom, 2 metres
- 9.1517.08** Universal stainless steel pedestal bracket



1551LED/1551LEDPMMA

DT Socket



1551LEDHD

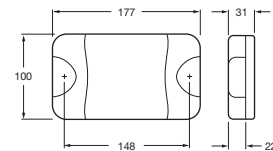
:: Latest Additions to the Hella Australia Range

:: LED Daytime Running Lamp

DuraLed® Universal Daytime Running Lamp - 9-33V DC ADR

1003

Description	Universal LED Daytime Running Lamp (DRL) equipped with 20 high-performance LEDs specifically designed for trucks, buses and commercial vehicles. Provides highly efficient and regulated white signal lighting for maximum visibility to oncoming traffic during the day. Automatically switches on when the engine is started and switches off when the main headlamps or front position lamps are activated or the engine is turned off. Easy to wire (only 3 connections) with the option of (+) positive or (-) negative switch off to suit most vehicles. Features ultra durable Grilamid® nylon lens for extreme impact, UV and chemical resistance. Fully sealed to withstand high-pressure washing and temporary water immersion.
Voltage	Multivolt™ (9-33V DC)
Wattage	3W
Mounting	Surface mount (screw caps and mounting bushes included)
Lead Length	2.5 metres
Protection	Reverse polarity protected. Fully sealed against dust and moisture to IP6K6 and IP6K7.
ADR	Fully compliant with 3 rd Edition ADR 76/00 Daytime Running Lamp (CRN 41607).



:: LED Multifunction Lamps

LED Rear Combination Lamp - 0.5m Cable ADR

2394

LED Rear Combination Lamp - 0.5m Cable (Pack of 18) ADR

2394BULK

LED Rear Combination Lamp - 6.0m Cable ADR

2394-6M

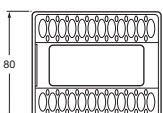
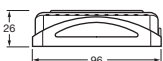
LED Rear Combination Lamp - 6.0m Cable (Pack of 10) ADR

2394-6MBULK

LED Rear Combination Lamp - 9.0m Cable (Pack of 12) ADR

2394-9MBULK

Description	Submersible LED Stop/Rear Position/Rear Direction Indicator Lamp with red retro reflector. Features modern clear lens design and black mounting base with multiple fixing points for easy fitment to most vehicles and trailers. Designed to withstand temporary water immersion and harsh environmental conditions including long-term exposure to very high UV levels. Optic appears clear until illuminated in signal colours.
Voltage	Dualvolt (12/24V DC)
Wattage	Stop 2W Rear Position 1W Rear Indicator 2W
Mounting	Surface mount (horizontal or vertical). Lamp clips into mounting base (multiple mounting holes).
Lead Length	0.5 metre (2394 and 2394BULK) 6.0 metres (2394-6M and 2694-6MBULK) 9.0 metres (2394-9MBULK)
Protection	Reverse polarity and built-in transient spike protection. Fully sealed to withstand high-pressure washing and temporary water immersion.
ADR	Fully compliant with 3 rd Edition ADR 6/00 Cat. 2a Rear Direction Indicator Lamp (CRN TBA), 49/00 Stop/Rear Position Lamp (CRN TBA) and 47/00 Retro Reflector - Red Rear (CRN 15294).



:: LED Multifunction Lamps

2395	LED Rear Combination Lamp - 0.5m Cable	 ADR
2395BULK	LED Rear Combination Lamp - 0.5m Cable (Pack of 18)	ADR
2395-6M	LED Rear Combination Lamp - 6.0m Cable	ADR
2395-6MBULK	LED Rear Combination Lamp - 6.0m Cable (Pack of 10)	ADR
2395-9MBULK	LED Rear Combination Lamp - 9.0m Cable (Pack of 12)	ADR



Stop



Rear Indicator



Rear Pos/
Licence
Plate

Description Submersible LED Stop/Rear Position/Rear Direction Indicator Lamp with red retro reflector and **additional LED licence plate lamp function**. Features modern clear lens design and black mounting base with multiple fixing points for easy fitment to most vehicles and trailers. Designed to withstand temporary water immersion and harsh environmental conditions including long-term exposure to very high UV levels. Optic appears clear until illuminated in signal colours.

Voltage Dualvolt (12/24V DC)

Wattage Stop 2W
Rear Position 1W
Rear Indicator 2W

Mounting Surface mount (horizontal only). Lamp clips into mounting base (multiple mounting holes). Licence plate mounts to side of lamp.

Lead Length 0.5 metre (2395 and 2395BULK)
6.0 metres (2395-6M and 2695-6MBULK)
9.0 metres (2395-9MBULK)

Protection Reverse polarity and built-in transient spike protection. Fully sealed to withstand high-pressure washing and temporary water immersion.

ADR Fully compliant with 3rd Edition ADR 6/00 Cat.2a Rear Direction Indicator Lamp (CRN TBA), 49/00 Stop/Rear Position Lamp (CRN TBA), 47/00 Retro Reflector - Red Rear (CRN 15294) and 48/00 Licence Plate Lamp (CRN TBA).

