



**PRODUCT NEWS**  
ISSUE #03/11

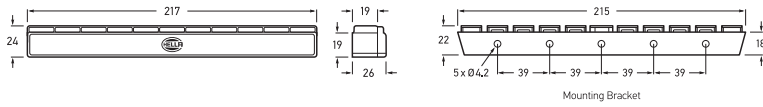


## Latest product releases

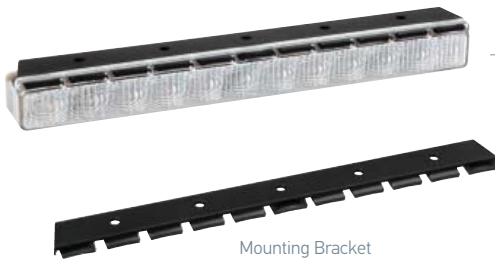


### Compact Mount LED Safety DayLights™

Reliable and energy efficient LED Daytime Running Lamp (DRL) featuring new slimline design and compact mounting system for fast and easy installation. Equipped with high-efficacy white LEDs for consistent light distribution and ultra-durable Grilamid® nylon lens for extreme impact, UV, chemical and stress resistance. Automatically switches on when the engine is started and switches off when the main headlamps are activated. Fully sealed against dust and moisture to withstand high pressure water jets.



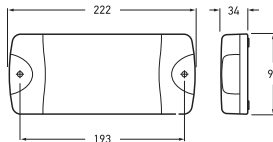
<b>1008</b>	Compact Mount LED Safety DayLights™ 12V DC	<b>ADR</b>
<b>1008-24V</b>	Compact Mount LED Safety DayLights™ 24V DC	<b>ADR</b>
Voltage	12V DC 24V DC	
Wattage	2W	
Mounting	Horizontal mount (mounting bracket and screws included)	
Lead Length	2.5 metres of twin core sheathed cable	
Protection	Reverse polarity protection. Sealed against dust and water ingress.	
ADR / ECE	Fully compliant with 3rd Edition ADR 76/00 Daytime Running Lamp (E24 87R-000001).	



Mounting Bracket

### DuraLed® Combi Lamp with Reversing Function

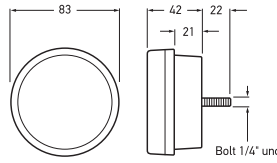
Durable and energy efficient LED Stop/Rear Position/Rear Direction Indicator/Reversing Lamp ideal for small trucks and utes. Equipped with modern clear lens design and sturdy black mounting base. Fully sealed against dust and moisture to withstand high-pressure washing and temporary water immersion.



<b>2380</b>	DuraLed® Combi Lamp with Reversing Function - 12V/24V DC	<b>ADR</b>
Voltage	Dualvolt (12V/24V DC)	
Wattage	Stop 5W Rear Position 1W Rear Indicator 4W Reverse 3W	
Mounting	Horizontal surface mount (screw caps and mounting bushes included)	
Lead Length	2.5 metres of multi-core sheathed cable	
Protection	Reverse polarity and transient spike circuit protection. Fully sealed against dust and moisture to IP6K6 and IP6K7.	
ADR / ECE	Fully compliant with 3rd Edition ADR 6/00: Cat 2a Rear Direction Indicator (43630), ADR 49/00 Stop Lamp (43632), ADR 49/00 Rear Position Lamp (43631) and ADR 1/00 Reversing Lamp (43628).	



Stop Rear Position Rear Indicator Reverse



### Combination LED Front Direction Indicator

ECE certified LED Front Direction Indicator/Front Position/Daytime Running Lamp (DRL) specifically designed for commercial transport applications. Equipped with high-efficacy white LEDs and ultra-durable Grilamid® nylon lens for extreme impact, UV, chemical and stress resistance. The direction indicator optic appears clear until illuminated and the white Safety DayLights™ (DRL) function dims automatically while the indicator is active as per ECE regulations.

2108-GMD	Combination LED Front Direction Indicator - 12V DC		ADR
Voltage	12V DC		
Wattage	Front Indicator	4W	
	Front Position	1W	
	Safety DayLights™	4W	
Mounting	Flush mount (incorporates single stainless steel mounting bolt)		
Lead Length	2.5 metres of multi-core sheathed cable		
Protection	Reverse polarity, spike and over voltage protection. Fully sealed against dust and moisture to IP6K6 and IP6K7.		
ADR / ECE	Fully compliant with 3rd Edition ADR 6/00: Cat 1 Front Direction Indicator Lamp, 49/00 Front Position Lamp and 76/00 Daytime Running Lamp (E24 5854).		



Accessories	Description
98069600	Mounting spacer 90mm outside dia.
98069620	Mounting spacer 95mm outside dia.
98069640	Mounting spacer 100mm outside dia.
98069660	Mounting spacer 110mm outside dia.



Front Indicator



Front Position



Safety DayLights™



**HELLA AUSTRALIA PTY LTD**

54-76 Southern Road  
Mentone, Victoria 3184 / Australia  
Tel. +61 (0)3 9581 9299  
Fax +61 (0)3 9585 2654  
Techline 1800 061 729  
custservice@ha.hella.com  
www.hella.com.au

© HELLA Australia Pty Ltd, Mentone  
Printed in Australia

**Special note:**

The illustrations, information and specifications presented and referred to in this brochure were correct at the time of printing. However, Hella reserves the right, subject to all applicable laws, at any time, at its discretion and without notice, to discontinue or change the specifications or the design of any product referred to herein. The data and suggested applications are given as a general guide only and users should independently evaluate the suitability of each product for any particular application.