

Submersible LED Trailer Lamps



 **DuraLed**[®]

Submersible LED Trailer Lamps

Advanced Hella marine LED trailer lamps are the ultra visible, maintenance free solution for reliable and safe boat trailer lighting.

Designed and manufactured in New Zealand, Hella LED trailer lamps are completely sealed and maintenance free. They are also shock, vibration, UV and corrosion resistant and represent true 'fit and forget' technology.

Towing safety and trailer visibility is greatly enhanced. Hella marine LED trailer lamps incorporate an Ultra Wide Visibility Optic, significantly improving side visibility. Hella's use of ultra wide visibility optics far exceeds the minimum ECE/ADR requirements and provides following vehicles with higher light intensity and vehicle recognition, especially as vehicles turn on curves and corners.

Multivolt™ electronics reduce the effect of voltage drop, ensuring ongoing safety. This means Hella LED lamps perform at full brightness across a range of voltages from 8-28V DC, unaffected by voltage drop that can dull bulb lamps due to long cable runs, joins, terminals and plugs in a trailer's wiring.



LED
Multivolt

LED Submersible Rear Combination Lamp

ADR
COMPLIANT

Part Number 2379

Description

Rear Position / Stop / Indicator
Lamp with Ultra Wide Visibility Optic
Designed to be mounted horizontally
Surface mount

Mounting

Operating Voltage

Multivolt™ 8-28V DC

Power Consumption

Rear position 1W, Indicator 5W, Stop 5W

Voltage Protection

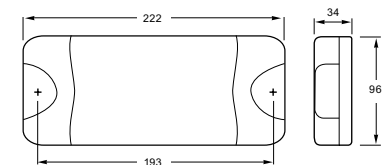
Spike, Over Voltage and Reverse Polarity

Cable

Pre-wired with 6m of cable

Approvals

ADR compliant



2559BULK

LED
Multivolt

LED Number Plate Lamp

ADR
COMPLIANT

Part Number 2559

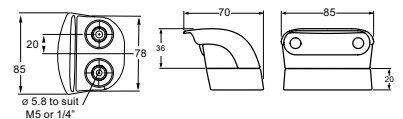
Part Number 2559BULK (Pack of 8 with mounting spacer)

Voltage

LED Multivolt™ 10-33V DC

Cable

Pre-wired with 2.5m of cable



LED Trailer Lighting Pack

ADR
COMPLIANT

Part Number 2379-TP

Includes:

2 x Submersible LED Combination Lamps

2 x LED Number Plate Lamps (with mounting spacers)

2 x Red Reflex Reflectors

Submersible LED Trailer Lamps



DuraLed Front End Outline Lamp

Product Description Amber Front End Outline (FEOL) LED
Operating Voltage Multivolt™ 8-28V DC
Installation Pre-wired with 500mm of cable.
 Bulk packs pre-wired with 2.5m or 5.0m of cable



DuraLed Front End Outline Lamp



Part Number	Description
2051	Single Pack (500mm of cable)
2051BULK	Pack of 4 (2.5m of cable)
-	-



DuraLed Side Marker Lamp

Product Description Red / Amber Side Marker LED Lamp
Operating Voltage Multivolt™ 8-28V DC
Installation Pre-wired with 500mm of cable.
 Bulk pack pre-wired with 2.5m of cable
 Super Seal version has 150mm of cable terminated with a Super Seal Connector



DuraLed Side Marker Lamp



Part Number	Description
2053	Single Pack (500mm of cable)
2053BULK	Pack of 4 (2.5m of cable / no SS)
2053SBULK	Delphi connector and short pigtail loom (2.5m of cable)



DuraLed Front Position / End Outline Lamp

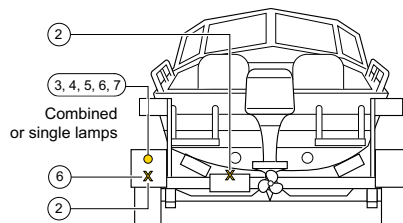
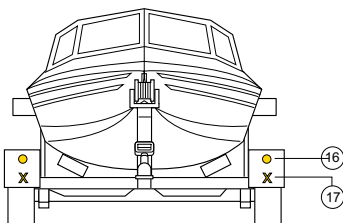
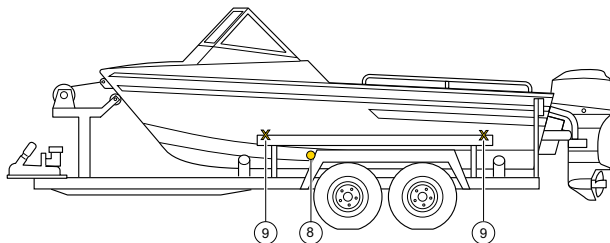
Product Description White Front End Outline (FEOL) LED
Operating Voltage Multivolt™ 10-33V DC
Installation Pre-wired with 500mm of cable.
 Bulk pack pre-wired with 2.5m of cable
ECE Compliance E4 02 7575



DuraLed Front Position / End Outline Lamp



Part Number	Description
2054	Single Pack (500mm of cable)
2054BULK	Pack of 4 (2.5m of cable)



No.	Lamp Function
2	ADR 48/00 License Plate Lamps
3	ADR 6/00 Cat.2 Rear Direction Indicator Lamps
4	ADR 49/00 Rear Position Lamps
5	ADR 49/00 Stop Lamps
6	ADR 47/00 Rear Reflex Reflectors
7	ADR 1/00 Reversing Lamps
8	ADR 47/00 Side Reflex Reflectors
9	ADR 45/01 or ADR 74/00 Side Marker Lamps
16	ADR 49/00 Front Position Lamps
17	ADR 47/00 Front Reflex Reflectors

Trailer Plugs and Sockets

**7 Pole Metal Socket**

Maximum Load	20A @ 12V
	10A @ 24V

7 Pole Metal Socket

4901
4901BULK (Pack of 25)

**7 Pole Plastic Plug**

Maximum Load	20A @ 12V
	10A @ 24V

7 Pole Plastic Plug

4902

**7 Pole Metal Plug**

Maximum Load	20A @ 12V
	10A @ 24V

7 Pole Metal Plug

4911 Single Pack
4911-BULK Pack of 25

**7 Pole Plastic Socket**

Maximum Load	20A @ 12V
	10A @ 24V

7 Pole Plastic Socket

4912 Single Pack
-

**7 Pole Flat Socket**

Impact resistant, UV stabilised, plastic, spring loaded lid.
Nickel plated contacts for excellent electrical performance.

Maximum Load	20A @ 12V
	10A @ 24V

7 Pole Flat Socket

4920

**7 Pole Flat Plug**

Impact resistant, UV stabilised, plastic, spring loaded lid.
Nickel plated contacts for excellent electrical performance.

Maximum Load	20A @ 12V
	10A @ 24V

7 Pole Flat Plug

4921

Trailer Plugs and Sockets

**Trailer Plug Holder**

Minimises potential damage to plug

Mounting

Screw mounting on trailer drawbar or any convenient location.

Trailer Plug Holder

8000

**Flat Plug Holder**

Flat plug holder to suit 7 Pole Flat Plug (Part Number 4921)

Flat Plug Holder

8009

Single Pack

8009-BULK

Pack of 20

**Trailer Socket Bracket**

Zinc plated steel. Eliminates the need to drill vehicle.

Trailer Socket Bracket

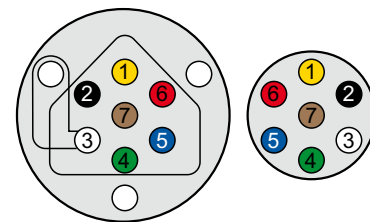
8022

7 Pole Connector Wiring Specification

Terminal No.	Connect to	Colour
1	Left flasher lamps	Yellow
2	Reversing lamps	Black
3	Earth	White
4	Right flasher lamps	Green
5	Service brakes (auxiliary) *	Blue
6	Stop lamps	Red
7	Tail, licence plate and clearance lamps	Brown

If a separate earth cable is not used on the vehicle, the earthing strip supplied should be fitted into pin 3 of socket and under mounting screw

* Where service brakes are not fitted, terminal No. 5 may be used for auxiliaries.



7 Pole Socket

7 Pole Plug