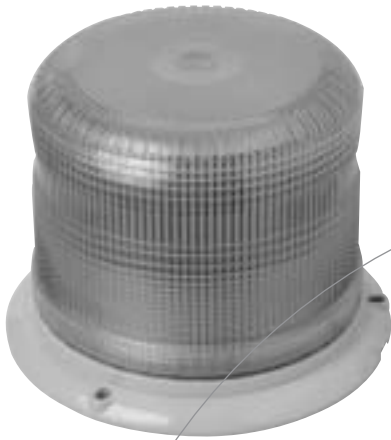




# PulseRAY®

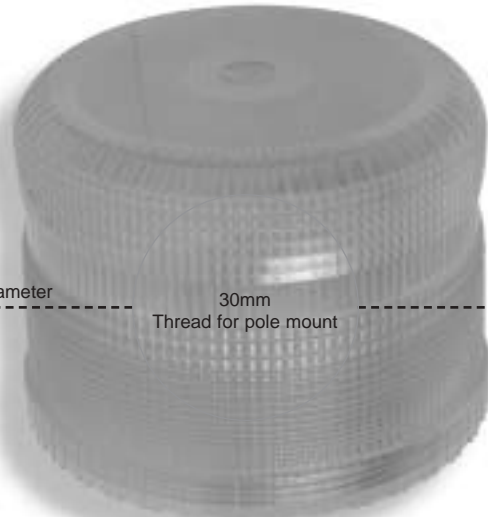
Xenon Warning Beacon  
Mounting instruction  
Please retain for future reference

Hella Part No.  
HME6750A



### Lens spare part:

Blue	9.1600.01
Red	9.1601.01
Amber	9.1602.01
Green	9.1603.01
Clear	9.1604.01



6mm x 8mm

Fixing Centres (Actual size)

Press in on tabs  
and pull up to  
remove globe

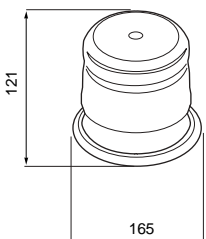
Globe Spare Part:  
XN6750

Ensure globe and  
socket key aligns

*i.beam*™ LED

**Note:**  
Fixing screws, nuts, spring washers,  
rubber grommet and rubber vibration  
damping disc included

Ensure O-ring  
is clean and in  
good order



www.hella.com.au  
Customer Service: Free Call 1800 061 729  
custservice@ha.hella.com



# PulseRAY®

Xenon Warning Beacon  
**Mounting instruction**  
Please retain for future reference

## Technical data

	<b>Voltage</b>	
Voltage	12-24 VDC	
Joules	10 Double Flash	16 Quad Flash
FPM	80 Double Flash	65 Quad Flash
Amps	2.3A	
Certification	AMECA certified to SAE J1318, <b>CE</b> , <b>e</b>	
Mass	1.1kg	
Lamp type	R6501FT	
Protection code	IP65	

### Wiring Instructions:

#### Double Flash Operation

The wiring for this configuration is shown in diagram.  
All wiring should be a minimum of 18AWG.  
For double flash mode, the red wire is positive, and must have a 10 amp fuse .  
A switch may be used to control the on/off function.  
The black (negative) wire is connected to the battery ground.

#### Quad Flash Operation

The wiring for this configuration is shown in diagram.  
All wiring should be a minimum of 18AWG.  
For quad flash mode, the black (positive) must have a 10 amp fuse . A switch may be used to control the on/off function.  
The red (negative) wire is connected to the battery ground.

#### Pipe Mounting

The PulseRAY base comes with 1" NPT threads for pipe mounting.

#### Note:

Rubber vibration damping gasket included, mount between vehicle surface and base of the strobe.

#### Notes:

1. Route wiring using grommets and sealant when passing through compartment walls. Minimize the number of splices to reduce voltage drop. High ambient temperatures (e.g. under-hood) will significantly reduce the current carrying capacity of wires, fuses and circuit breakers. All wiring should conform to the minimum wire size and other recommendations of the manufacturer and be protected from moving parts and hot surfaces. Looms, grommets, cable tie, and similar installation hardware should be used to anchor and protect all wiring.
2. Fuses or circuit breakers should be located as close to the power takeoff points as possible and properly sized to protect the wiring and devices.
3. Particular attention should be paid to the location and method of making electrical connections and splices to protect these points from corrosion and loss of conductivity.
4. Ground termination should only be made to substantial chassis components, preferably directly to the vehicle battery.

#### CAUTION!

When drilling into any vehicle surface make sure that the area is free from any electrical wires, fuel lines, vehicle upholstery, etc, that could be damaged.

### Troubleshooting

#### WARNING!

The strobe power supply is a high voltage device. To avoid the risk of electrical shock, wait 5 minutes after turning off power before removing lens for access to internal parts of the strobe head.

#### Notes:

1. Most strobe failures, including intermittent or erratic operation as well as failure of operation can be traced to wiring or battery problems, Check all wiring, connections, fuse, switch and battery voltage to insure that the correct voltage is reaching the strobe light.
2. If the wiring or battery is not at fault, turn on the strobe, look through the lens to check to see if the LED is flashing (see other page for location). If the LED is flashing and the flashtube is not the flashtube may need to be replaced. If the LED is not flashing, return the product to your local dealer for warranty replacement or call Hella Customer Service for assistance 1800 061 729.
3. To replace the flashtube, remove the flashtube by squeezing on the tabs on the side of the tube holder and pulling off. Plug in the new flashtube. Do not touch the glass of the new flashtube with your fingers. Use gloves or a soft cloth. **NOTE:** The connector is keyed to ensure proper orientation. Do not force.

• Hella shall be absolved from all responsibility for any modifications performed on the luminaire

• Use only certified original equipment for replacement purposes

