



Hella marine

Vision and Innovation

Product News

Latest Additions to the Hella Marine Range

Issue 3

LED Mega Beam

Reliable and energy efficient LED deck floodlight

Hella remains on the cutting edge of innovative lighting technology with the release of its first LED deck floodlight, maximising the advantages of Hella marine LED lighting technology.

This first generation LED Mega Beam deck floodlight consumes only 7 watt of power in total - a significant current draw reduction of more than 80% compared to conventional halogen floodlights. This results in minimal strain on both alternator and battery, making LED Mega Beam deck floodlights the ideal lighting solution for vessels with low alternator performance and battery-assisted power supply. Advanced Hella marine Multivolt™ electronics ensure consistent illumination and circuit protection at any input voltage between 9 and 30V DC for ultra long service life.

Equipped with four high-performance Luxeon Power LEDs (light emitting diodes) positioned in a high-sheen, metallised free-form (FF) reflector, LED Mega Beam floodlights deliver long lasting light output and uniform, close range illumination without harsh contrasts. The clear glass lens and projecting housing edge reduce scatter losses and avoid light reflections outside the illuminated area.

LED Mega Beam deck floodlights offer superior functional safety and operating reliability. Unlike conventional halogen globes, LEDs are resistant to shock and vibration and last for a minimum of 10,000 hours, eliminating the risk of sudden light failure during operation.

In addition LED Mega Beam floodlights are fully sealed and made from durable materials that are resistant to high levels of vibration, impact and shock loads. The hardened glass lens, robust die-cast aluminium housing and stainless steel bracket provide optimum corrosion resistance and maximum protection from damage, even in the most extreme marine environments.

New!

LED
Multivolt 

Key Features

- Advanced luxeon power LED technology
- Ultra low power consumption
- Multivolt™ (9-30V DC)
- Ultra long service life
- Resistant to shock and vibration
- Completely sealed (IP5K9K)
- Reverse polarity protection
- Robust construction
- Modern clear glass lens
- Suitable for upright, pendant or side mounting
- Pre-wired with 2m marine cable (sealed cable exit)



Hella marine

Product News

LED Mega Beam Deck Floodlight



Powerful and energy efficient LED Deck Floodlight.

- Ultra low current draw
- Ultra long service life
- Advanced Luxeon Power LED Technology
- Multivolt™ 9-30V DC
- Shock and vibration resistant
- Completely sealed
- Pre-wired with 2m marine cable (sealed cable exit)
- Fit and forget design

This first generation LED Mega Beam marine floodlight is suitable for vessels subject to high vibration, impact and shock loads. Supplied with stainless steel mounting hardware and pre-wired with 2 metres of marine cable, each lamp is a completely sealed 'fit and forget' unit.

Advanced Hella marine optics and advanced Luxeon Power LED Technology combine to provide high intensity white light for an even close range illumination without harsh contrasts.

LED Mega Beam deck floodlights offer substantial power savings on board. Total power consumption is 7W (0.58A at 12V), which is only 15% of the energy required to operate a conventional 55W H3 Halogen floodlight. Hella marine Multivolt™ electronics provide consistent illumination and circuit protection across a range of inputs from 9-30V DC for increased service life.

LED Mega Beam deck floodlights are the ideal lighting solution for vessels requiring energy efficient, completely sealed, shock and vibration resistant illumination.



Housing Description

UV and impact resistant plastic front housing, die-cast aluminium body, stainless steel bracket and clear glass lens.

Light Source

LED

Installation

Pre-wired with 2.0m marine cable.

Operating Voltage

Multivolt™ 9-30V DC

Power Consumption

7W

Protection

Over voltage, reverse polarity and spike protected.

Degree of Protection

IP5K9K

Colour Temperature

6500°K

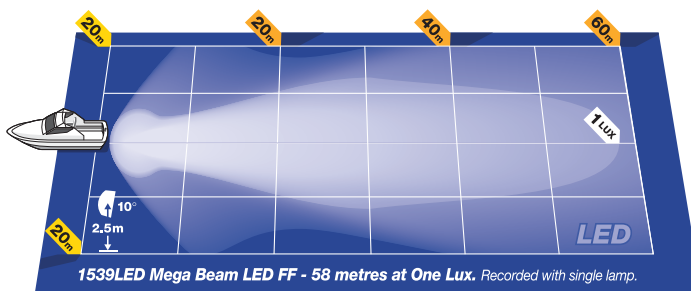
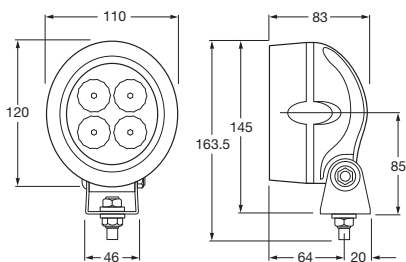
Mounting

Upright, side or pendant mounting.

LED Mega Beam Deck Floodlight - White Housing



1GM 996 136-121



Slimline LED Courtesy Lamps

Stylish round LED Courtesy Lamps with satin stainless steel rims.

- Now available with satin stainless steel rims
- Ultra low power consumption
- Low heat emission
- Completely sealed for life
- UV and corrosion resistant
- Shock and vibration resistant
- 12V DC and 24V DC

Our range of slimline round LED courtesy lamps has been extended to include satin 316 stainless steel versions offering attractive and energy efficient lighting for a variety of interior and exterior applications.

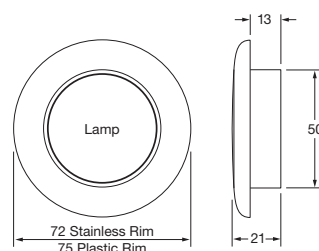
Equipped with innovative LED technology and advanced lens optics, slimline round LED courtesy lamps deliver a cool and even spread of soft light without glare whilst consuming a fraction of the energy of traditional globe type lamps.

The low profile design and shallow mounting depth of 13mm enables trouble-free installation into narrow panels and areas with limited mounting space.

Hella marine LED courtesy lamps are completely sealed, waterproof, and resistant to shock, vibration, UV and corrosion, making them the ideal lighting solution for demanding marine environments.

Material Description	UV and impact resistant plastic.
Installation	Pre-wired with 120mm cable.
Operating Voltage	12 or 24V DC
Power Consumption	0.5W
Degree of Protection	IP67
Mounting	Recess or surface mount. 3 x stainless steel screws included.

CLEAR LENS	White	12V DC	24V DC
	Satin Stainless Steel Rim	2XT 980 500-091	2XT 980 501-091
CLEAR LENS	Warm White	12V DC	24V DC
	Satin Stainless Steel Rim	2XT 980 500-291	2XT 980 501-291
CLEAR LENS	Green	12V DC	24V DC
	Satin Stainless Steel Rim	2XT 980 502-091	2XT 980 503-091
CLEAR LENS	Blue	12V DC	24V DC
	Satin Stainless Steel Rim	2XT 980 502-291	2XT 980 503-291
CLEAR LENS	Cyan	12V DC	24V DC
	Satin Stainless Steel Rim	2XT 980 502-491	2XT 980 503-491
CLEAR LENS	Amber	12V DC	24V DC
	Satin Stainless Steel Rim	2XT 980 507-091	2XT 980 508-091
CLEAR LENS	Red	12V DC	24V DC
	Satin Stainless Steel Rim	2XT 980 507-301	2XT 980 508-291
CLEAR LENS	Deep Red	12V DC	24V DC
	Satin Stainless Steel Rim	2XT 980 507-491	2XT 980 508-491
CLEAR LENS	Orange	12V DC	24V DC
	Satin Stainless Steel Rim	2XT 980 507-691	2XT 980 508-691
CLEAR LENS	White High Intensity*	12V DC	24V DC
	Satin Stainless Steel Rim	2XT 980 500-591	2XT 980 501-591
CLEAR LENS	Warm White High Intensity*	12V DC	24V DC
	Satin Stainless Steel Rim	2XT 980 500-791	2XT 980 501-791



*Each high intensity version lamp includes a white surface mounting spacer and 3 x stainless steel screws.



Modern and energy efficient square LED courtesy lamps.

- **Innovative slimline design**
- **Shallow mounting depth**
- **Ultra low current draw**
- **Low heat emission**
- **Completely sealed for life**
- **UV and corrosion resistant**
- **Shock and vibration resistant**
- **12V DC and 24V DC**

Hella marine has introduced a new range of innovative square LED courtesy lamps for a variety of interior and exterior applications. With a shallow mounting depth of only 16mm, these energy efficient LED courtesy lamps can be installed almost anywhere on board.

Equipped with advanced Hella marine lens technology, LED courtesy lamps provide an even spread of soft light without glare whilst consuming a fraction of the energy of traditional globe type lamps. With a current draw of less than 0.5W (<0.04A at 12VDC) square LED courtesy lamps run very cool and offer safe installation into lightweight materials, where excess heat of incandescent lamps could cause damage to the surrounding structure.

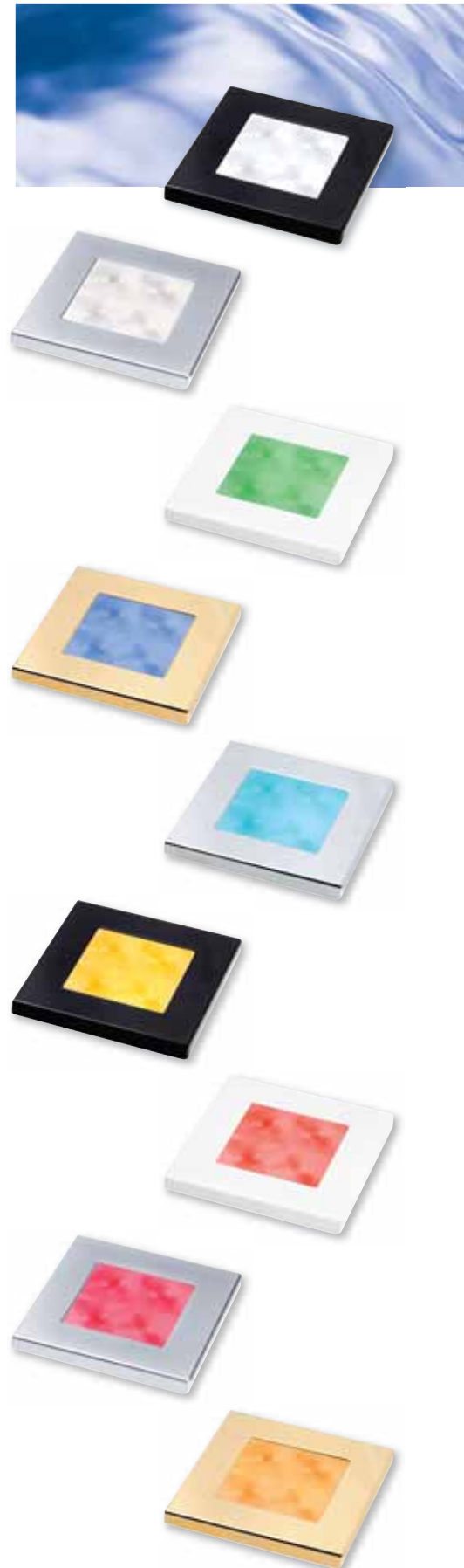
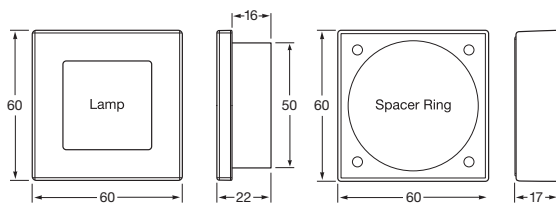
Each lamp is completely sealed, waterproof and resistant to shock, vibration, UV and corrosion, making them the ideal lighting solution for demanding marine environments.

The new range offers enhanced brightness versions in both white and warm white variants. These enhanced lamps feature a concentrated light pattern to deliver three times the light output compared to standard white and warm white LED courtesy lamps.

High-quality rims are available in a variety of finishes including gloss black, gloss white, gold plated, chrome and modern satin chrome plated.

In addition, Hella marine offers surface mounting spacer rings providing additional installation options. Surface mounting spacers are available in a number of finishes to compliment or contrast the lamp rims.

Housing Description	UV and impact resistant plastic.
Light Source	LED
Installation	Pre-wired with 120mm cable.
Operating Voltage	12 or 24V DC
Power Consumption	0.5W
Degree of Protection	IP67
Mounting	Recess or surface mount. Stainless steel screws included.



Square LED Courtesy Lamps



<small>CLEAR LENS</small>	White	12V DC	24V DC
	Satin Chrome Plated	2XT 980 580 -061	2XT 980 581 -061
	Chrome Plated	2XT 980 580 -071	2XT 980 581 -071
	Gold Plated	2XT 980 580 -031	2XT 980 581 -031
	White Plastic	2XT 980 580 -051	2XT 980 581 -051
	Black Plastic	2XT 980 580 -041	2XT 980 581 -041

<small>CLEAR LENS</small>	Red	12V DC	24V DC
	Satin Chrome Plated	2XT 980 587 -261	2XT 980 588 -261
	Chrome Plated	2XT 980 587 -271	2XT 980 588 -271
	Gold Plated	2XT 980 587 -231	2XT 980 588 -231
	White Plastic	2XT 980 587 -251	2XT 980 588 -251
	Black Plastic	2XT 980 587 -241	2XT 980 588 -241

<small>CLEAR LENS</small>	Warm White	12V DC	24V DC
	Satin Chrome Plated	2XT 980 580 -261	2XT 980 581 -261
	Chrome Plated	2XT 980 580 -271	2XT 980 581 -271
	Gold Plated	2XT 980 580 -231	2XT 980 581 -231
	White Plastic	2XT 980 580 -251	2XT 980 581 -251
	Black Plastic	2XT 980 580 -241	2XT 980 581 -241

<small>CLEAR LENS</small>	Deep Red	12V DC	24V DC
	Satin Chrome Plated	2XT 980 587 -461	2XT 980 588 -461
	Chrome Plated	2XT 980 587 -471	2XT 980 588 -471
	Gold Plated	2XT 980 587 -431	2XT 980 588 -431
	White Plastic	2XT 980 587 -451	2XT 980 588 -451
	Black Plastic	2XT 980 587 -441	2XT 980 588 -441

<small>CLEAR LENS</small>	Green	12V DC	24V DC
	Satin Chrome Plated	2XT 980 582 -061	2XT 980 583 -061
	Chrome Plated	2XT 980 582 -071	2XT 980 583 -071
	Gold Plated	2XT 980 582 -031	2XT 980 583 -031
	White Plastic	2XT 980 582 -051	2XT 980 583 -051
	Black Plastic	2XT 980 582 -041	2XT 980 583 -041

<small>CLEAR LENS</small>	Orange	12V DC	24V DC
	Satin Chrome Plated	2XT 980 587 -661	2XT 980 588 -661
	Chrome Plated	2XT 980 587 -671	2XT 980 588 -671
	Gold Plated	2XT 980 587 -631	2XT 980 588 -631
	White Plastic	2XT 980 587 -651	2XT 980 588 -651
	Black Plastic	2XT 980 587 -641	2XT 980 588 -641

<small>CLEAR LENS</small>	Blue	12V DC	24V DC
	Satin Chrome Plated	2XT 980 582 -261	2XT 980 583 -261
	Chrome Plated	2XT 980 582 -271	2XT 980 583 -271
	Gold Plated	2XT 980 582 -231	2XT 980 583 -231
	White Plastic	2XT 980 582 -251	2XT 980 583 -251
	Black Plastic	2XT 980 582 -241	2XT 980 583 -241

<small>CLEAR LENS</small>	White High Intensity*	12V DC	24V DC
	Satin Chrome Plated	2XT 980 580 -561	2XT 980 581 -561
	Chrome Plated	2XT 980 580 -571	2XT 980 581 -571
	Gold Plated	2XT 980 580 -531	2XT 980 581 -531
	White Plastic	2XT 980 580 -551	2XT 980 581 -551
	Black Plastic	2XT 980 580 -541	2XT 980 581 -541

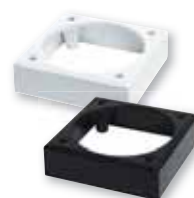
<small>CLEAR LENS</small>	Cyan	12V DC	24V DC
	Satin Chrome Plated	2XT 980 582 -461	2XT 980 583 -461
	Chrome Plated	2XT 980 582 -471	2XT 980 583 -471
	Gold Plated	2XT 980 582 -431	2XT 980 583 -431
	White Plastic	2XT 980 582 -451	2XT 980 583 -451
	Black Plastic	2XT 980 582 -441	2XT 980 583 -441

<small>CLEAR LENS</small>	Warm White High Intensity*	12V DC	24V DC
	Satin Chrome Plated	2XT 980 580 -761	2XT 980 581 -761
	Chrome Plated	2XT 980 580 -771	2XT 980 581 -771
	Gold Plated	2XT 980 580 -731	2XT 980 581 -731
	White Plastic	2XT 980 580 -751	2XT 980 581 -751
	Black Plastic	2XT 980 580 -741	2XT 980 581 -741

<small>CLEAR LENS</small>	Amber	12V DC	24V DC
	Satin Chrome Plated	2XT 980 587 -061	2XT 980 588 -061
	Chrome Plated	2XT 980 587 -071	2XT 980 588 -071
	Gold Plated	2XT 980 587 -031	2XT 980 588 -031
	White Plastic	2XT 980 587 -051	2XT 980 588 -051
	Black Plastic	2XT 980 587 -041	2XT 980 588 -041

Surface Mounting Spacers

Chrome Plated	8HG 959 993 -512
Gold Plated	8HG 959 993 -522
Satin Chrome Plated	8HG 959 993 -532
Black	8HG 959 993 -602
White	8HG 959 993 -542



*Each high intensity version lamp includes a surface mounting spacer in matching finish and 4 x stainless steel screws.

'Easy Fit' LED Step Lamps



Compact and energy efficient LED step lamps with satin chrome caps.

- **Now available with satin chrome caps**
- **Ultra low power consumption**
- **Completely sealed for life**
- **Shock and vibration resistant**
- **Multivolt™ 12-24V DC**

Our range of 'Easy Fit' LED step lamps has been further extended to include satin chrome cap versions offering modern and energy efficient lighting for a variety of interior and exterior applications.

The light of these LED lamps is radiated downward at an angle of 30°, making them ideal for use as permanent safety or guide lighting fixtures for illuminating onboard areas such as steps, stairs, toe kicks, storage areas, companion ways, deck fittings, signs and switches.

Multivolt™ electronics ensure a consistent level of intensity in 12 and 24V DC systems. Like all Hella marine LED lamps, 'Easy Fit' LED step lamps are completely sealed, shock and vibration resistant and represent reliable 'fit and forget' technology.

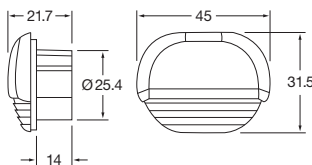


New!
Satin Caps



Material Description	UV and impact resistant acrylic.
Installation	Pre-wired with 100mm cable.
Operating Voltage	Multivolt™ 12-24V DC
Power Consumption	0.5W
Degree of Protection	Completely sealed.
Mounting	Single hole. Foam gasket included.

<small>CLEAR LENS</small>	'Easy Fit' LED Step Lamp - Blue, 12-24V DC	LED Multivolt
	Satin Chrome Cap	2JA 998 560-101
<small>CLEAR LENS</small>	'Easy Fit' LED Step Lamp - White, 12-24V DC	LED Multivolt
	Satin Chrome Cap	2JA 998 560-121
<small>CLEAR LENS</small>	'Easy Fit' LED Step Lamp - Red, 12-24V DC	LED Multivolt
	Satin Chrome Cap	2JA 998 560-241
<small>CLEAR LENS</small>	'Easy Fit' LED Step Lamp - Amber, 12-24V DC	LED Multivolt
	Satin Chrome Cap	2JA 998 560-341



Note: Lamp covers cannot be easily removed once clipped into place.