

InoxoLUME® N5HID



The Hella InoxoLUME® N5HID range of luminaires is suitable for use in areas where conditions are too severe for fibreglass and polycarbonate luminaires, and where the long life and high light level possible with high intensity gas discharge lamps, is required. Stainless steel and glass offer resistance to more corrosive elements than any other material commonly used in luminaire manufacture. The low profile of the InoxoLUME lights also makes them suitable for use where head-room is limited.

Typical applications are chemical plants or plants subjected to high levels of vibration or solar radiation. The InoxoLUME N5HID luminaire range is totally enclosed, dust-proof and vapour-proof, with an IP66 rating.

The luminaire consists of a body and frame, both of which are drawn from single pieces of grade 304 stainless steel. The hinged frame contains a bonded

4mm tempered glass inside a wrap-around silicon gasket.

The frame and gasket are fastened against the body using captive stainless steel spring clips. The powder coated mild steel gear tray is fastened to the body by four studs.

A single threaded M20 entry with metal No. 0 compression gland is provided. Provision for mounting is provided via two M8 threaded weld nuts that must be used to ensure the integrity of the housing, as the body must not be perforated. Eyebolts are provided as standard, with the option for pole clamp brackets or anti-vibration mountings.

InoxoLUME N5HID lights are rated IP66 and fitted with low loss electromagnetic reactor ignitor control gear, with digital pulse control ignitors and power factor correction capacitors. The control gear is very robust, and the digital ignitors ensure reliable lamp ignition under harsh conditions while reducing radio interference by up to 90%. Hella InoxoLUME N5HID luminaires are available in single and twin lamp configurations.

Description	Part No.
N5HID IP66 Weatherproof Stainless Steel Floodlight	
N5HID 1/150 HPS (1 x 150W HPS Lamps)	HMN5101-240
N5HID 2/150 HPS (2 x 150W HPS Lamps)	HMN5102-240
N5HID 1/150 MH (1 x 150W MH Lamps)	HMN5103-240
N5HID 2/150 MH (2 x 150W MH Lamps)	HMN5104-240



Product features

- Stainless steel body (Grade 304)
- Toughened safety glass lens (4mm)
- Painted steel gear tray
- MustADD® filter
- Captive stainless steel spring clips
- Nylon lanyard
- Silicone seal
- Multiple fixing options available
- Reactor ignitor control gear
- Fused terminal block
- M20 gland entry
- IP6K5
- IEC 60598-2-1 compliant

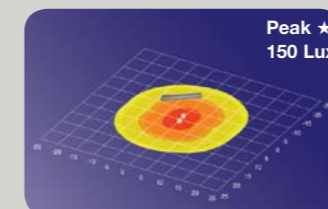
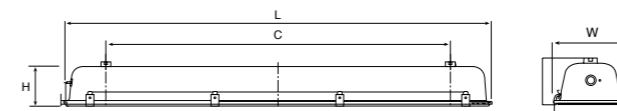
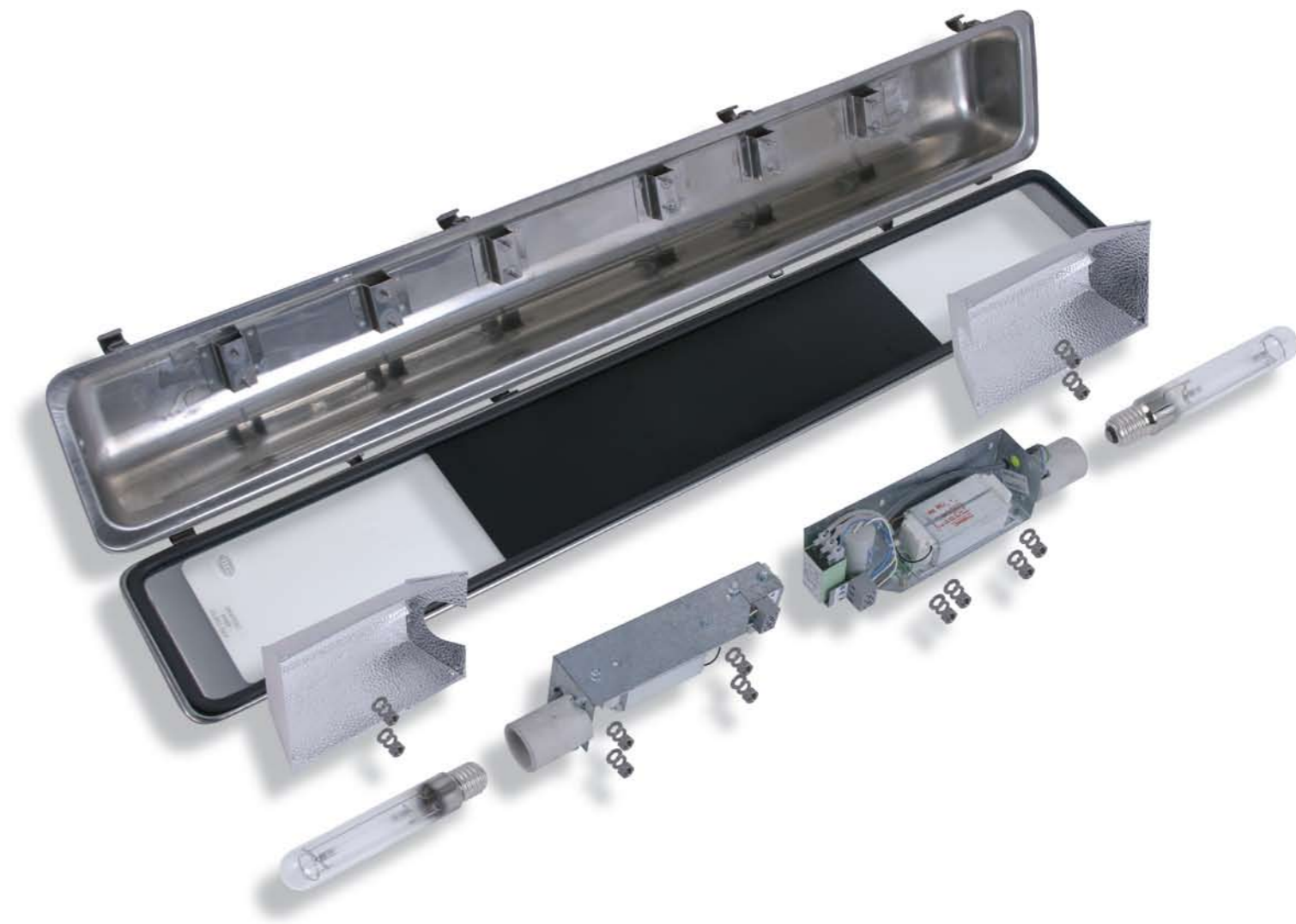
Lamp Type	Starting Current	Running Current (240V AC)	Circuit Load
1 x 150W Tubular High Pressure Sodium	1.7A	1.1A	171W
2 x 150W Tubular High Pressure Sodium	3.4A	2.2A	342W
1 x 150W Tubular Metal Halide	1.7A	1.1A	171W
2 x 150W Tubular Metal Halide	3.4A	2.2A	342W

InoxoLUME Dimensions

Description	Dimensions (mm)			Fixing Centres (mm)	No. of Lamps	No. of Clips	Mass
	L	W	H				
InoxoLUME 1/150	790	219	135	490mm	1 by 150W	6	7.4kg
InoxoLUME 2/150	1670	219	135	1100mm	2 by 150W	10	14.6kg

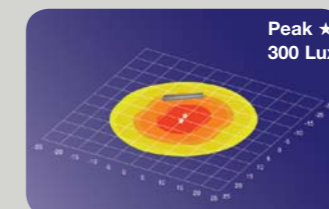
Spare Parts

9.HMN060	N5HID Gear Tray 70HPS/240
9.HMN061	N5HID Gear Tray 70MH/240
9.HMN063	Clip
9.HMN064	Gland
9.HMN043	Lens 150
9.HMN044	Lens 250
9.HMN045	Surface Mount Bracket
9.HMN046	Mounting Hooks
9.HMN047	Pole Mount Clamps



InoxoLUME® N50HID 1/150W MH
Mounting Height 5m, Angle 0°

- 50 LUX
- 10 LUX
- 5 LUX
- 1 LUX
- .05 LUX



InoxoLUME® N50HID 2/150W MH
Mounting Height 5m, Angle 0°