

InoxoLUME® N2E



The Hella InoxoLUME® range of luminaires is suitable for use in areas where conditions are too severe for fibreglass and polycarbonate luminaires. Stainless steel and glass offer resistance to more corrosive elements than any other material commonly used in luminaire manufacture.

Typical applications are chemical plants or plants subjected to high levels of vibration or solar radiation. The InoxoLUME N2E luminaire range is totally enclosed, dust-proof and vapour-proof, with an IP65 rating.

The luminaire consists of a body and frame, both of which are drawn from single pieces of grade 304 stainless steel. The hinged frame contains a bonded 4mm tempered glass inside a wrap-around silicone gasket.

The frame and gasket is fastened against the body using captive, stainless steel spring clips

The powder coated mild steel gear tray is fastened to the body by two captive thumb screws.

The gear tray contains a fused terminal block, and electronic control gear. The gear tray is suspended from the body by two straps to allow for easy installation and maintenance. A single threaded M20 entry with metal No. 0 compression gland is provided.

Provision for mounting is provided via two M8 threaded weld nuts that must be used to ensure the integrity of the housing, as the body must not be perforated. Eye bolts are provided as standard, with the option for pole clamp brackets or anti-vibration mountings.

Hella InoxoLUME lights comply with IEC 60598-2-1.

Product features

- Stainless steel body (Grade 304)
- Toughened safety glass lens (6mm)
- Painted steel gear tray
- MustADD® filter
- Captive stainless steel spring clips
- Nylon lanyard
- Silicone seal
- Multiple fixing options available
- Energy efficient electronic control gear
- Fused terminal block
- M20 gland entry
- IP6K5
- IEC 60598-2-1 compliant

InoxoLUME N2E

Lamp Type 26mm linear	Running Current (240V AC)	Circuit load
2 by 18W	0.17A	37W
2 by 36W	0.31A	72W
2 by 58W	0.48A	111W

InoxoLUME Dimensions

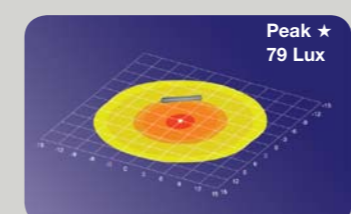
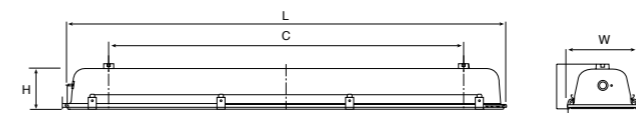
Description	Dimensions (mm)			Fixing Centres (mm)	No. of Lamps	No. of Clips	Mass
	L	W	H				
InoxoLUME 2/18	790	219	135	490mm	2 by 18W	6	7.3kg
InoxoLUME 2/36	1370	219	135	1100mm	2 by 36W	8	10.9kg
InoxoLUME 2/58	1670	219	135	1100mm	2 by 58W	10	11.9kg

Description	Part No.
N2E IP66 Weatherproof Stainless Steel Twin Lamp Electronic Control Gear	
N2E 218 (2 x 18W Lamps)	HMN21218-240
N2E 236 (2 x 36W Lamps)	HMN21236-240
N2E 258 (2 x 58W Lamps)	HMN21258-240

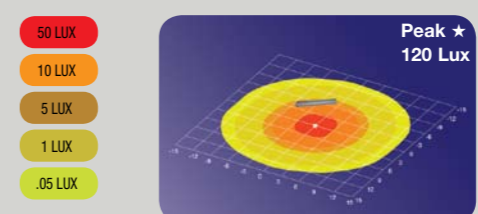


Spare Parts

9.HMN040	Lens 218
9.HMN041	Lens 236
9.HMN042	Lens 258
9.HMN045	Surface Mount Bracket
9.HMN046	Mounting Hooks
9.HMN047	Pole Mounting Clamps
9.HMN051	N2E Gear Tray 218/240
9.HMN052	N2E Gear Tray 236/240
9.HMN053	N2E Gear Tray 258/240
9.HMN063	Clip
9.HMN035	Gland



InoxoLUME® N20 2/36W
Mounting Height 4m, Angle 0°



InoxoLUME® N20 2/58W
Mounting Height 4m, Angle 0°