

7118 Series Halogen



Off White Housing - Structured Lens



Black Housing - Structured Lens



Ice White Housing - Crystal Clear Lens
Sealed cable entry gland

7118 Series

Fibre reinforced housing and Free form reflector for close range homogeneous illumination.

Features:

- Hella 'Free form' reflector technology
- Sealed cable entry gland and pre-wired cable option
- Structured or Crystal Clear lens option
- Extended front edge for lens protection
- 316 Stainless steel mounting hardware

Housing Description

Bulb

Mounting

Cable Entry

Degree of Protection

Maximum Output

UV and impact resistant plastic housing

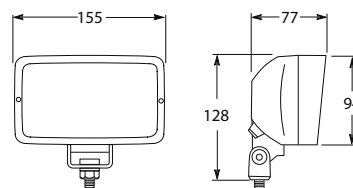
12V / 55W H3 bulb included

Pendant or Upright mounting

Rubber grommet or Sealed cable entry gland pre-wired with 220mm of twin core marine cable.

IP X4

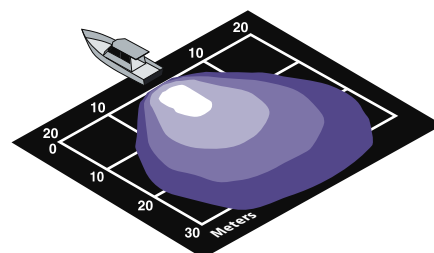
12V / 55W or 24V / 70W



Replacement Bulb Type -

PK22s

12V / 55W (YC1255)
24V / 70W (YC2470)



Sealed cable entry gland with nut option. Pre-wired with 220mm of twin core marine cable.

7118 Series Halogen Deck Floodlights

Voltage	Housing Colour	Lens	Cable Entry	Part Number
12V	Off White	Structured Lens	Rubber Grommet	2859
12V	Black	Structured Lens	Rubber Grommet	1519
12V	Off White	Structured Lens	Cable Gland	1GA 007 118-051
12V	Ice White	Structured Lens	Cable Gland	1GA 007 118-101
12V	Ice White	Clear Lens	Cable Gland	1GA 007 118-081
12V	Black	Structured Lens	Cable Gland	1GA 007 118-091

Bracket

Stainless steel bracket for stabilised mounting in areas subject to vibration.
9.1517.08



Spare Part

9.2859.02 'FF' insert

8518 Series - Flush Mount

White fibre reinforced housing and Free form reflector for close range homogeneous illumination.

Features:

- Seal between frame and attachment surface
- Cable entrance through rubber grommet
- Large 135 x 75mm light aperture
- 316 stainless steel screws

UV and impact resistant plastic housing

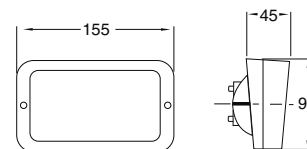
12V / 55W H3 bulb included

Recess mount - Front inclination 5 degrees

Terminals at rear of reflector

IP X4

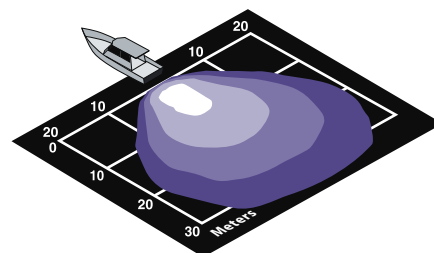
12V / 55W or 24V / 70W



Replacement Bulb Type -

PK22s

12V / 55W (YC1255)
24V / 70W (YC2470)



Housing Description

Bulb

Mounting

Cable Entry

Degree of Protection

Maximum Output

8518 Series Flush Mount Halogen Deck Floodlights

Voltage	Housing Colour	Lens	Part Number	Spare Part
12V	Off White	Structured Lens	2860	9.2859.02 'FF' insert

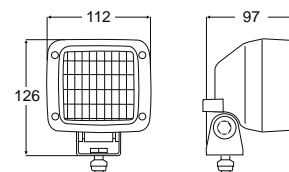
8517 Series Halogen

**8517 Series**

White fibre reinforced housing and Free form reflector for close range homogeneous illumination.

Features:

- Hella 'Free form' reflector technology
- Compact design
- Illuminates large areas of deck or superstructure
- Glass lens bonded with reflector to be dust and moisture resistant
- Sealed cable entry via 2 pin plug
- 316 Stainless steel mounting hardware

**Replacement Bulb Type -**

PK22s
12V / 55W (YC1255)
24V / 70W (YC2470)

Housing Description**Bulb****Mounting****Cable Entry****Degree of Protection****Maximum Output**

UV and impact resistant plastic housing

12V / 55W H3 bulb included

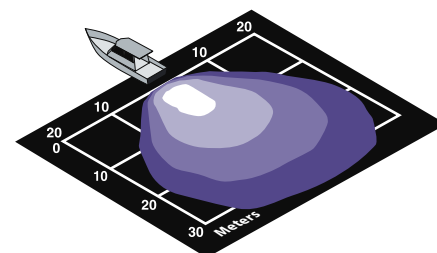
Pendant or Upright mounting

2 PIN AMP connector (AMP 180923)

IP 6K 9K

12V / 55W or 24V / 70W

Note - Not suitable for 100W bulbs

**8517 Series Halogen Deck Floodlight**

Voltage	Housing Colour	Part Number
12V	White Housing	2833

Bracket

Stainless steel bracket for stabilised mounting in areas subject to vibration.
9.1517.08

**Spare Part**

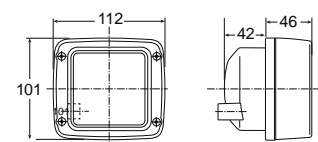
9.1533.01 'FF' insert
9.6008.05 - Rubber boot for AMP connection
9.6008.06 - Wiring loom for AMP connection, 2.0m

8517 Series - Flush Mount

White fibre reinforced housing and Free form reflector for close range homogeneous illumination.

Features:

- Hella 'Free form' reflector technology
- Compact design
- Illuminates large areas of deck or superstructure
- Glass lens bonded with reflector to be dust and moisture resistant
- Sealed cable entry via 2 pin plug
- 316 Stainless steel mounting hardware

**Replacement Bulb Type -**

PK22s
12V / 55W (YC1255)
24V / 70W (YC2470)

**Housing Description****Bulb****Mounting****Cable Entry****Degree of Protection****Maximum Output**

UV and impact resistant plastic housing

12V / 55W H3 bulb included

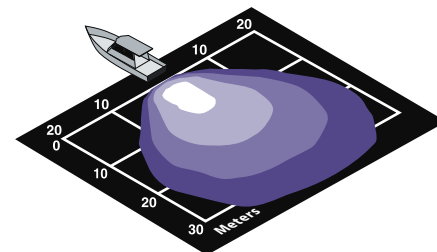
Recess Mount, 2-pin

2 PIN AMP connector (AMP 180923)

IP 6K 9K

12V / 55W or 24V / 70 W

Note - Not suitable for 100W bulbs

**8517 Series Flush Mount Halogen Deck Floodlight**

Voltage	Housing Colour	Part Number
12V	White Housing	2834

Spare Part

9.1533.01 'FF' insert

8541 Series Halogen



Housing Description
Bulb
Mounting
Cable Entry
Degree of Protection
Maximum Output

8541 Series

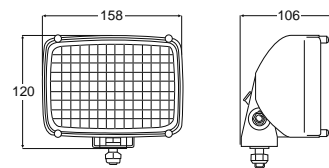
Wide spread close range illumination with double Free form reflector. White fibre reinforced plastic housing with extended front edge to protect lens.

Features:

- Twin Hella 'Free form' reflector technology
- Triple the light output compared to conventional lamps of the same size
- Large 145 x 83mm light aperture
- Extended front edge for lens protection
- 316 Stainless steel mounting hardware

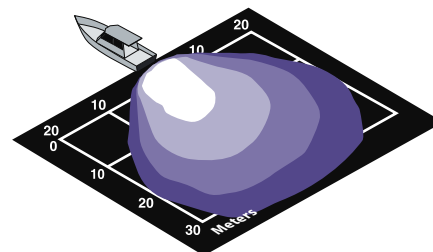
UV and impact resistant plastic housing
 2 x 12V / 55W H3 bulbs included
 Pendant or Upright mounting,
 Pre-wired with 110mm of cable
 IP 54
 2 x 12V / 55W or 2 x 24V / 70W

Note - Not suitable for 100W bulbs



Replacement Bulb Type -

PK22s
 12V / 55W (YC1255)
 24V / 70W (YC2470)



8541 Series Halogen Deck Floodlight

Voltage	Housing Colour	Part Number
12V	White Housing	2830

Bracket

Stainless steel bracket for stabilised mounting in areas subject to vibration.
 9.1517.08



Spare Part

9.1531.01 'FF' insert



Housing Description
Bulb
Mounting
Degree of Protection
Maximum Output

8542 Series - Flush Mount

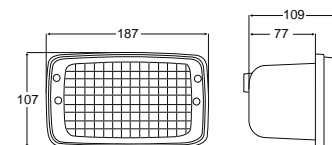
Wide spread close range illumination with double Free form reflector. Flush mount fibre reinforced plastic housing with extended front edge to protect lens.

Features:

- Twin Hella 'Free form' reflector technology.
- Triple the light output compared to conventional deck lamps of the same size.
- Extended front edge for lens protection.
- Large 145 x 83mm light aperture.
- 7° upwards or downwards inclination.

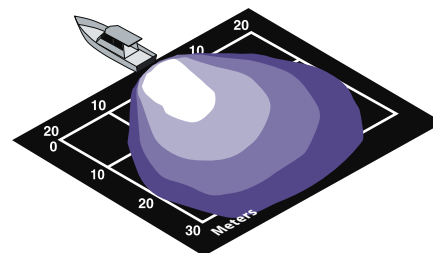
UV and impact resistant plastic housing
 2 x 12V / 55W H3 bulbs included
 Recess Mount. Pre-wired with 250mm of cable
 IP 54
 2 x 12V / 55W or 2 x 24V / 70W

Note - Not suitable for 100W bulbs



Replacement Bulb Type -

PK22s
 12V / 55W (YC1255)
 24V / 70W (YC2470)



8542 Series Flush Mount Halogen Deck Floodlight

Voltage	Housing Colour	Part Number
12V	White Housing	1GB 998 542-001

Oval 100 Series Halogen

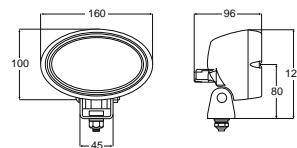


Oval 100 Series

White fibre reinforced housing and Free form reflector for close range homogeneous illumination. Sturdy housing design for use under heavy duty conditions.

Features:

- Extended front edge for lens protection
- Glass lens bonded with reflector to be dust and moisture resistant
- 316 Stainless steel mounting hardware
- Sealed cable entry via threaded gland with nut
- Suitable for applications subject to heavy vibration
- Upright or pendant mounting. Can be rotated through 180°.



Replacement Bulb Type -

PK22s

12V / 55W (YC1255)
24V / 70W (YC2470)

Housing Description

Bulb

Mounting

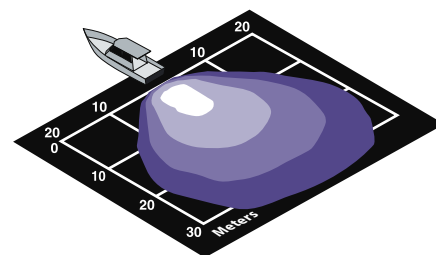
Cable Entry

Degree of Protection

Maximum Output

UV and impact resistant plastic housing
12V / 55W or 24V / 70W H3 bulb included
Pendant or Upright mounting,
Pre-wired with 300mm of cable
IP 6K 9K
12V / 55W or 24V / 70W

Note - Not suitable for 100W bulbs



Sealed cable entry gland with nut.
Pre-wired with 300mm of twin core marine cable.

Oval 100 Series Halogen Deck Floodlight

Voltage	Housing Colour	Part Number
12V	White Housing	1GA 996 361-131
24V	White Housing	1GA 996 361-391

Bracket

Stainless steel bracket for stabilised mounting in areas subject to vibration.
9.1517.08



Spare Part

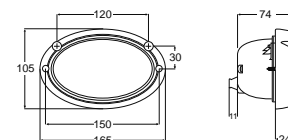
9.1540.01 'FF' insert

Oval 100 Series - Flush Mount

White fibre reinforced housing and Free form reflector for close range homogeneous illumination. Sturdy housing design for use under heavy duty conditions.

Features:

- Extended front edge for lens protection.
- Glass lens bonded with reflector to be dust and moisture proof.
- Sealed cable entry via threaded gland with nut.
- Suitable for applications subject to heavy vibration.



Replacement Bulb Type -

PK22s

12V / 55W (YC1255)
24V / 70W (YC2470)



Housing Description

Bulb

Mounting

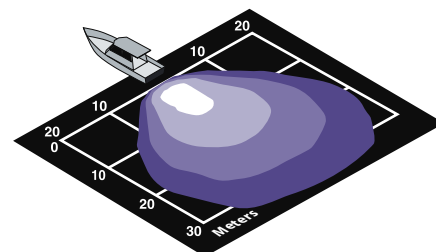
Cable Entry

Degree of Protection

Maximum Output

UV and impact resistant plastic housing
12V / 55W or 24V / 70W H3 bulb included
Recess Mount
Pre-wired with 300mm of cable
IP 6K 9K
12V / 55W or 24V / 70W

Note - Not suitable for 100W bulbs



Oval 100 Series Flush Mount Halogen Deck Floodlight

Voltage	Housing Colour	Part Number
12V	White Housing	1GA 996 361-141
24V	White Housing	1GA 996 361-401

Spare Part

9.1540.01 'FF' insert

6134 Series Halogen



Housing Description
Bulb
Mounting
Cable Entry
Degree of Protection
Maximum Output

6134 Series

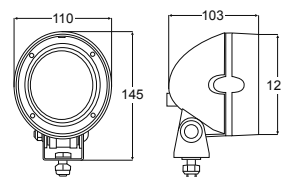
White fibre reinforced housing and Free form reflector for close range homogeneous illumination. Flush mount with extended front edge to protect lens.

Features:

- Glass lens bonded with reflector to be dust and moisture resistant
- Extended front edge for lens protection
- 316 Stainless steel mounting hardware
- Sealed cable entry via 2 pin plug
- Suitable for applications subject to heavy vibration
- Upright or pendant mounting. Can be rotated through 130°.

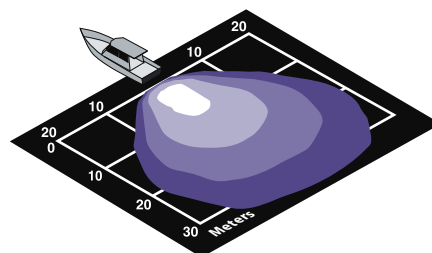
UV and impact resistant plastic housing
 12V / 55W or 24V / 70W H3 bulb included
 Pendant or Upright mounting,
 2 PIN AMP connector (AMP 180923)
 IP 5K 6K
 12V / 55W or 24V / 70W

Note - Not suitable for 100W bulbs



Replacement Bulb Type -

PK22s
 12V / 55W (YC1255)
 24V / 70W (YC2470)



6134 Series Halogen Deck Floodlight

Voltage	Housing Colour	Part Number
12V	White Housing	2835
24V	White Housing	2835-24V

Bracket

Stainless steel bracket for stabilised mounting in areas subject to vibration.
 9.1517.08



Spare Part

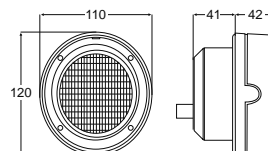
9.1539.01 'FF' insert
 9.6008.05 - Rubber boot for AMP connection
 9.6008.06 - Wiring loom for AMP connection, 2.0m

6134 Series - Flush Mount

White fibre reinforced housing and Free form reflector for close range homogeneous illumination.

Features:

- Glass lens bonded with reflector to be dust and moisture resistant
- Extended front edge for lens protection
- Sealed cable entry via 2 pin plug
- Suitable for applications subject to heavy vibration



Replacement Bulb Type -

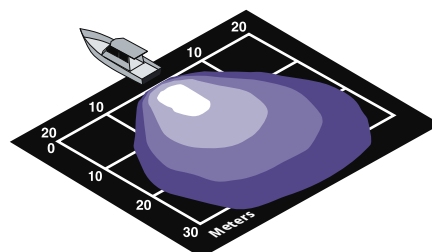
PK22s
 12V / 55W (YC1255)
 24V / 70W (YC2470)



Housing Description
Bulb
Mounting
Cable Entry
Degree of Protection
Maximum Output

UV and impact resistant plastic housing
 12V / 55W or 24V / 70W H3 bulb included
 Recess Mount. Pre-wired with 250mm of cable
 2 PIN AMP connector (AMP 180923)
 IP 5K 6K
 12V / 55W or 24V / 70W

Note - Not suitable for 100W bulbs



6134 Series Flush Mount Halogen Deck Floodlight

Voltage	Housing Colour	Part Number
12V	White Housing	1GM 996 134-501
24V	White Housing	1GM 996 134-511

Spare Part

9.1539.01 'FF' insert