



The information presented in this application-engineering document seeks to deliver the end user with:
Improved profitability of the operation by achieving:



- Greater safety
- Lower Maintenance cost
- Greater productivity
- Predictable service
- Better Value

The applications engineering office outlines areas of great concern and hopes to present a practical solution.



Please note that a light loss factor has been taken into consideration during this calculation.



HM-0703

Type	Hella part number	Description	Spares	Diagram
A 	HMADX35WBD	AS500 FF Worklamp 24v Wide Beam with Deutsche plug	9.HMASXB24 - 24V – Ballast 9.HMASXNB - Insert Narrow Optic 9.HMAPEDL – Pedestal Bracket 9.HMATRUN – Trunnion Bracket XN4000 – Globe 9.HMAWHKD – Wire harness kit	



HMADXWBD x 11



Type	Hella part number	Description	Spares	Diagram
B 	HM9386YEL2A	DuraRAY LED Warning Beacon	Installation Kit – 9.HM9386.02	

HM9386YEL2A x 2



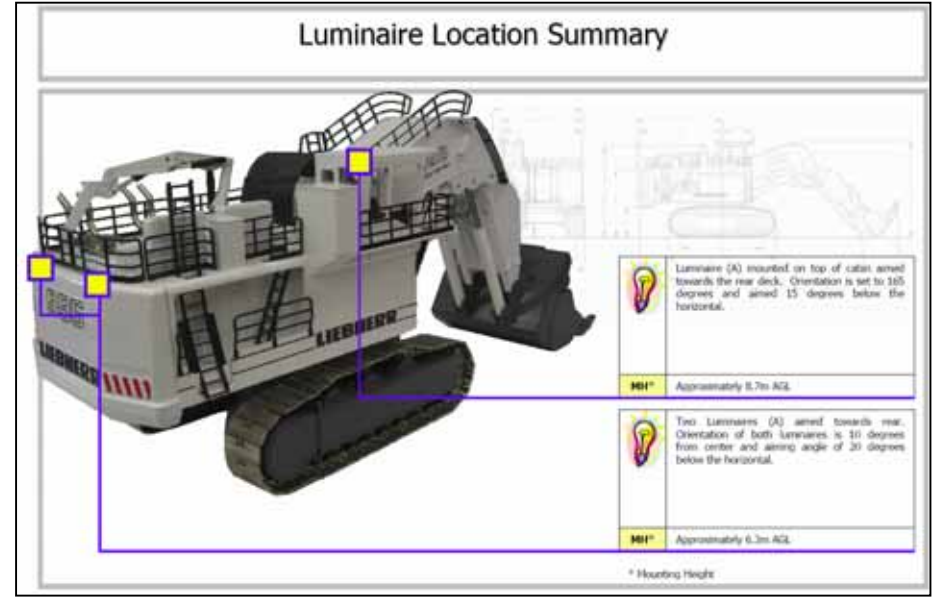
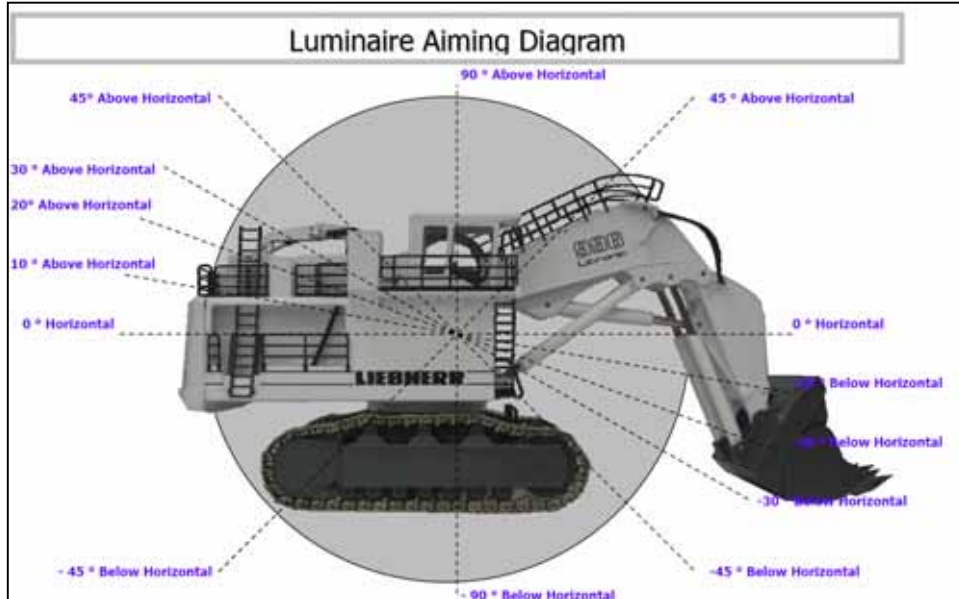
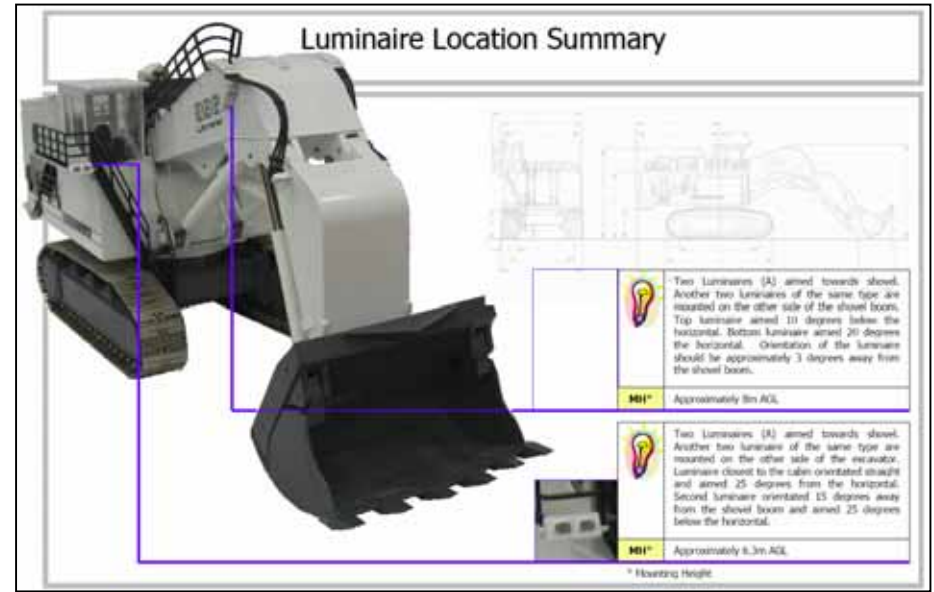
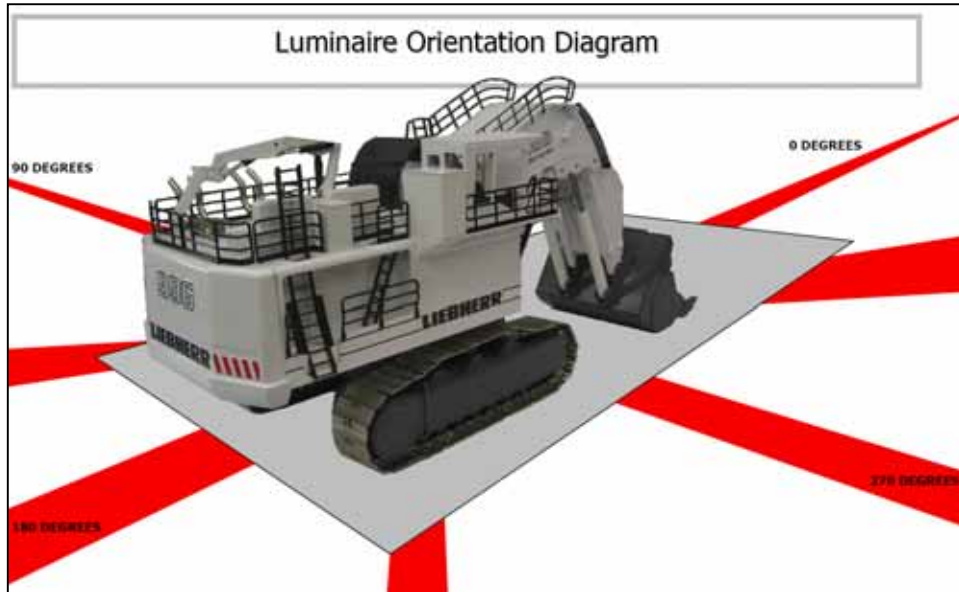
HM-0703

Type	Hella part number	Description	Spares	Diagram
C 	HM959950021	EuroLED Touch Lamp (LED)	None	
HM959950021 x 2				

Type	Hella part number	Description	Spares	Diagram
D 	HM2051D	Amber Marker Lamp with Deutsche plug	Marker Housing Yellow (Pack of 4) 9.HMDLM001	
HM2051D x 4				

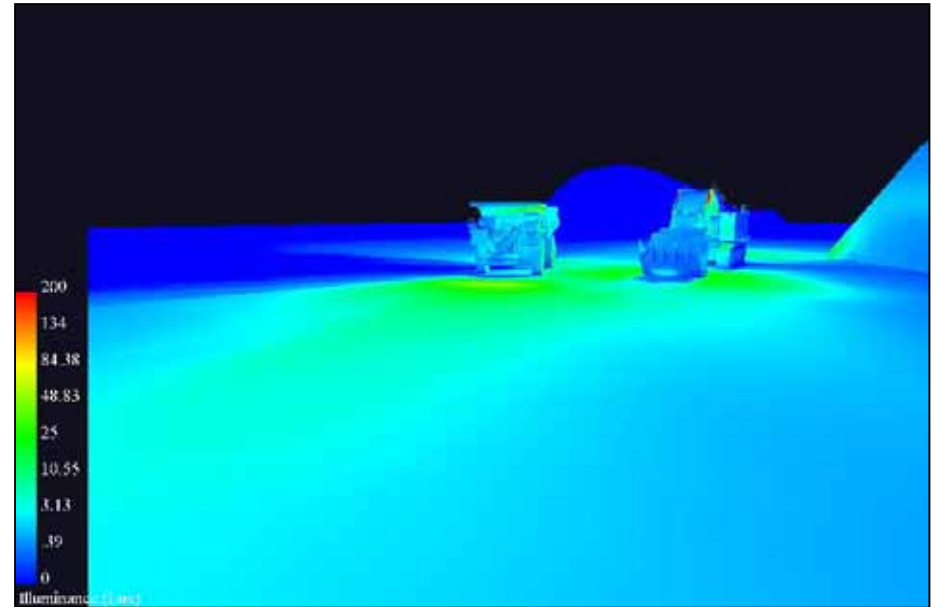
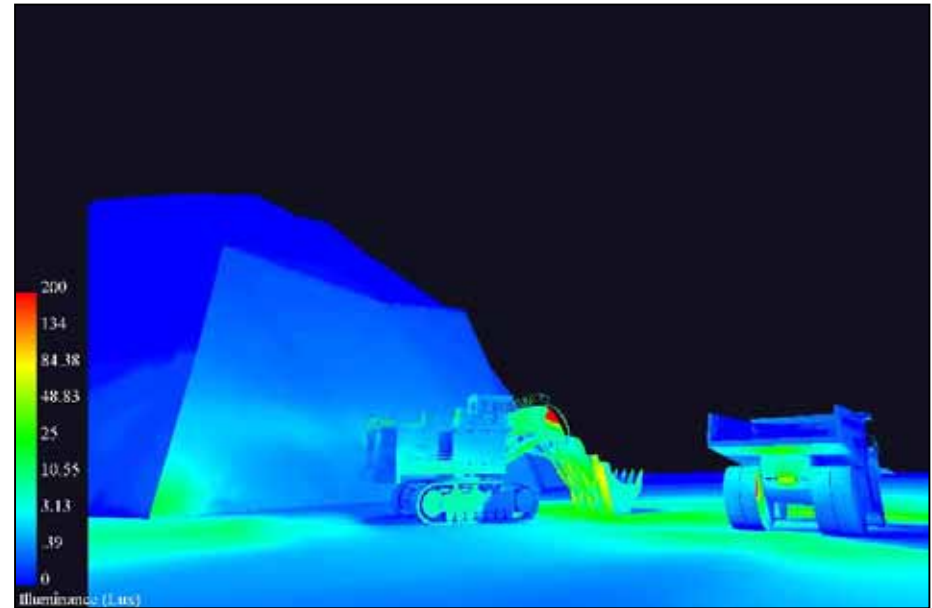


HM-0703



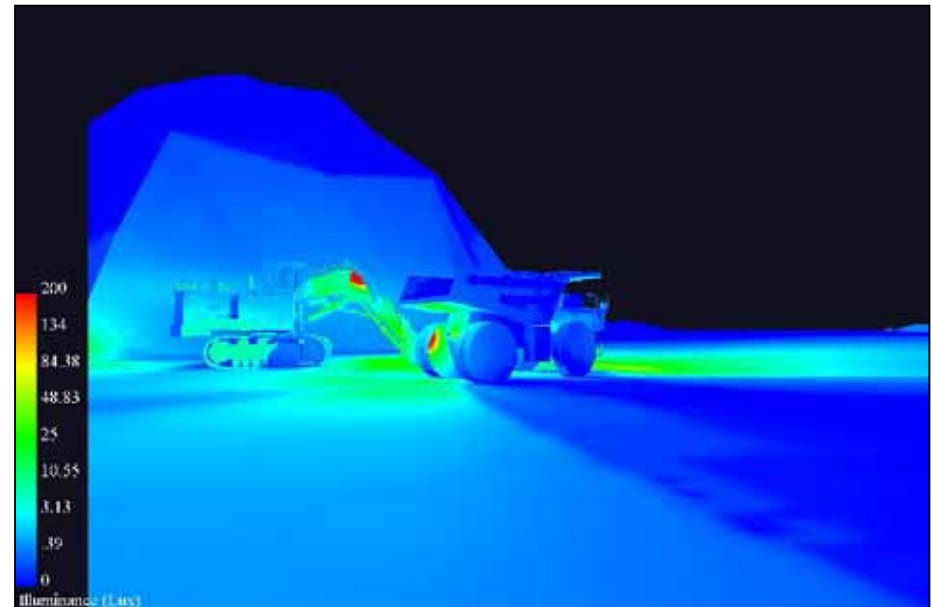
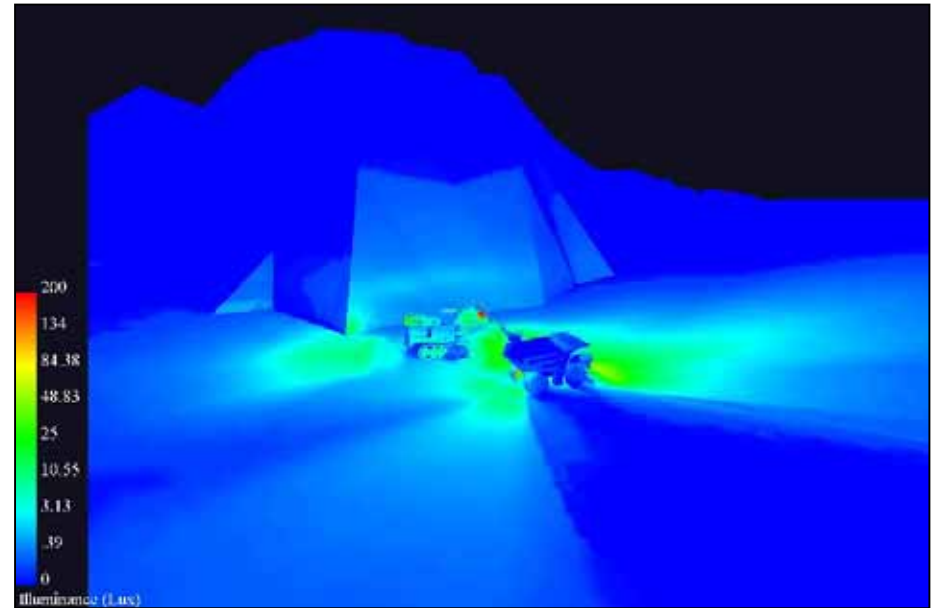


HM-0703





HM-0703





HM-0703

