



The information presented in this application-engineering document seeks to deliver the end user with:
Improved profitability of the operation by achieving:

- Greater safety
- Lower Maintenance cost
- Greater productivity
- Predictable service
- Better Value

The applications engineering office outlines areas of great concern and hopes to present a practical solution.

Please note that a light loss factor has been taken into consideration during this calculation.




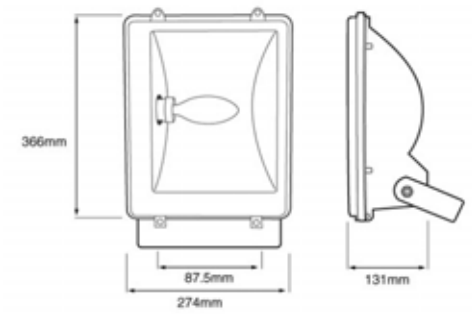
HM-0703

Type	Hella part number	Description	Spares	Diagram
A	HMN4806WB-240	MaxiLUME IP65 GRP Floodlight	<ul style="list-style-type: none">○ Lamp HM400HQIT○ Gear tray 9.HMN160○ Lens 9.HMN148○ Bracket 9.HMN150○ Reflector 9.HMN 199	

TOTAL = 30



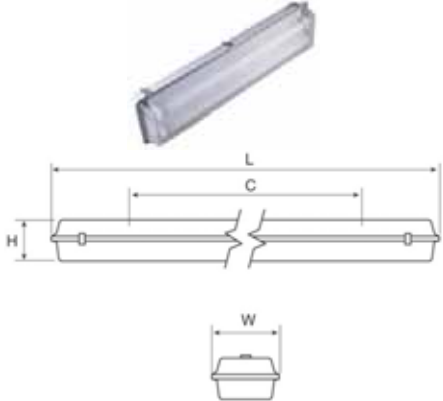
HM-0703

Type	Hella part number	Description	Spares	Diagram
B	HMN4904WB-240	MiniLUME IP65 GRP Floodlight 100w MH	<ul style="list-style-type: none">○ Lamp HM100HQIE○ Gear tray 9.HMN080○ Lens 9.HMN070○ Bracket 9.HMN072○ Reflector 9.HMN074	 

TOTAL = 6

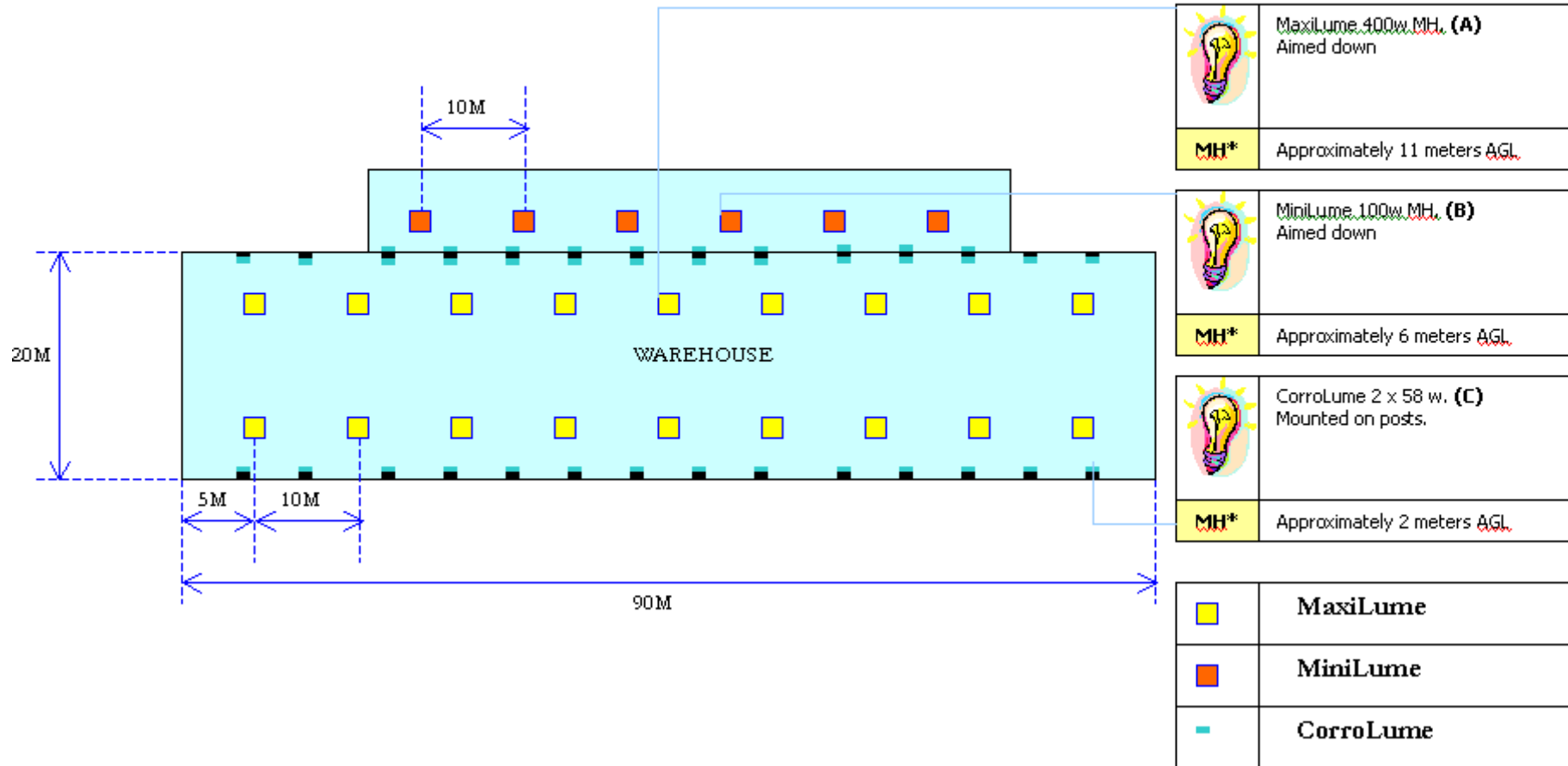


HM-0703

Type	Hella part number	Description	Spares	Diagram
C	HMN11258-240	CorroLUME JBE IP65 Weatherproof Twin Lamp Electronic Control Gear	<ul style="list-style-type: none">o LENS 258 - 9.HMN01o CLIP - 9.HMN016o Surface Mount Bracket - 9.HMN019o Mounting Hook - 9.HMN021o Pole Clamp - 9.HMN 022o Electronic Starter - 9.HMN023o JBE Gear Tray - 9.HMN029o JB Gland - 9.HMN035o Lanyard - 9.HMN036o Grommet - 9.HMN037o Lamp - HM58840FLS	
TOTAL = 38				

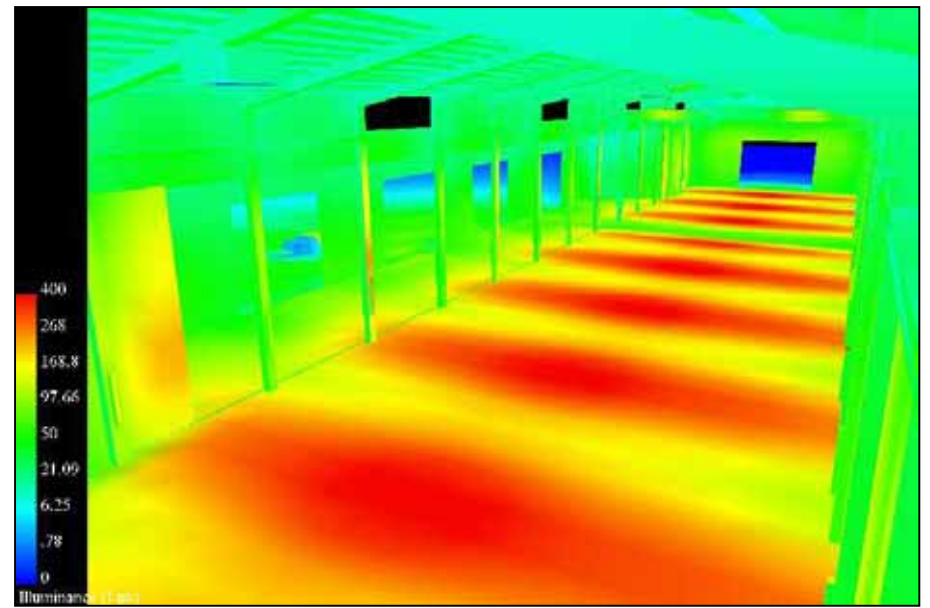
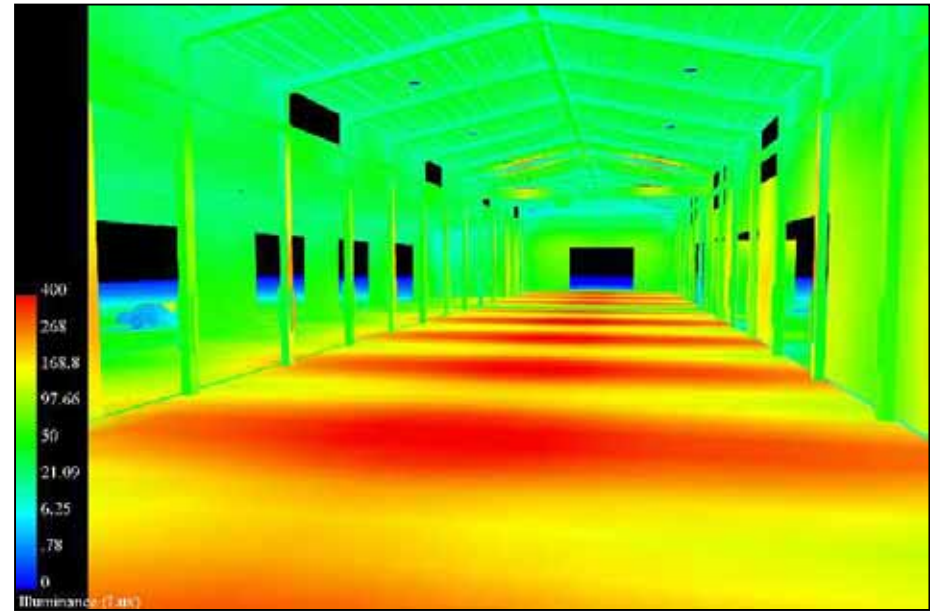


WAREHOUSE



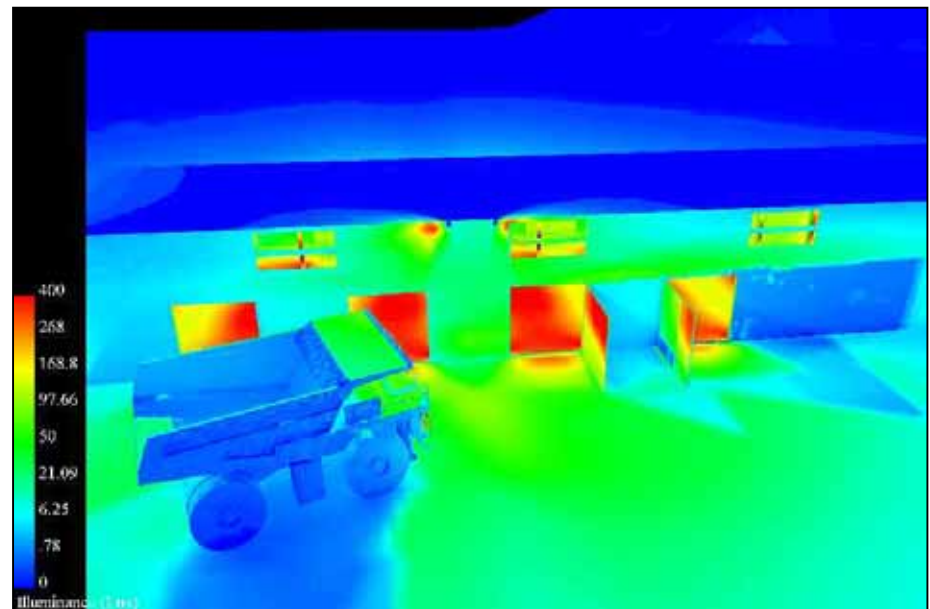
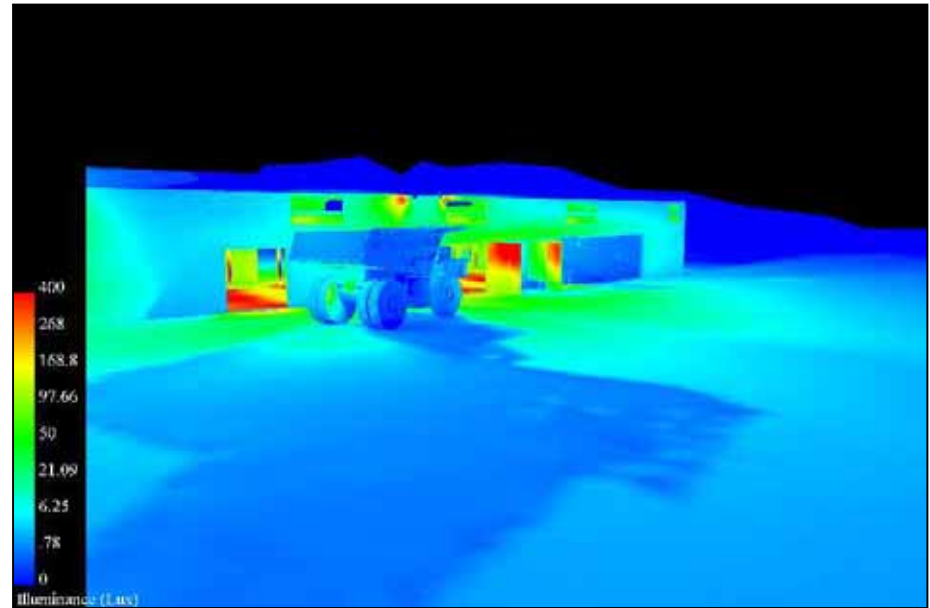


HM-0703





HM-0703





HM-0703

