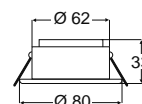


General Interior / Exterior Lamps

8508 Series

Water resistant flush mount halogen lamps suitable for interior or exterior installations. The reflector uses a 10W bulb and provides the light output equivalent to a 20W bulb. (Bulbs up to 20W can also be used). Supplied with a silicon seal to prevent the glass lens from vibrating. Spring clip mounting.



Housing Description	Solid brass housing Stainless steel cover ring
Bulb	12V / 10W Halogen G4 included
Degree of Protection	IP 65
Installation	Pre-wired with 150mm of cable
Maximum Output	20W

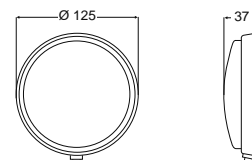
8508 Series Halogen Interior / Exterior Lamps

Voltage	Housing Colour	Part Number
12V	Chrome Housing	2JA 998 508-001
12V	White Housing	2791

12V / 10W Bulb
(YM1210)
24V / 10W Bulb
(YM2410)

8513 Series

Water resistant marine lamps made from tough polycarbonate with a foam rubber gasket. Suitable for interior or exterior installations. Mounting screws included. Available with integrated ON / OFF switch.



Housing Description	Impact resistant polycarbonate
Bulb	12V / 10W SV8.5 included
Installation	Pre-wired with 70mm of cable
Maximum Output	15W

8508 Series Halogen Interior / Exterior Lamps

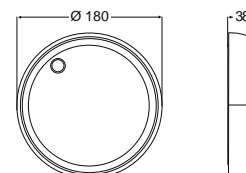
Voltage	Housing Colour	Part Number
12V	White Housing	2610M
12V	White Housing with Switch	2617M

12V / 10W Bulb
(K1210)
24V / 10W Bulb
(K2410)

Spirt Part
Clear Lens
2.9800.08

8565 Series

These compact round fluorescent lamps are splash proof, energy efficient, and space saving with a long service life. Multivolt™ electronics provide over-voltage, reverse polarity protection and consistent light output across a range of input voltages from 10-30 DC. Compact 7W fluorescent tube produces light output equivalent to a 40W incandescent bulb.



Housing Description	Plastic lens and housing
Light Source	2G7 Fluorescent tube included
Installation	Pre-wired with 120mm of cable
Operating Voltage	10-30V DC
Nominal Power	7W
Power Consumption	12V, 650 mA, 24V 325 mA
Degree of Protection	IP 6K4

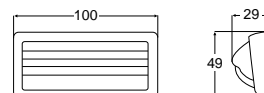
8565 Series Fluorescent Tube Interior / Exterior Lamps

Voltage	Housing Colour	Part Number
12V	White Housing	2645
12V	White Housing with Switch	2645SW

General Interior / Exterior Lamps

**4192 Series**

Ideal berth or chart reading lamps. Shutter tilts to switch lamp ON and OFF. Adjustable light opening.



Housing Description	Plastic
Bulb	10W SV8.5 (Not included)
Installation	2 flat plug connectors 6.3mm
Maximum Output	10W

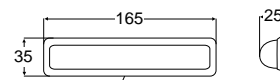
4192 Series Incandescent Interior Lamps

Housing Colour	Lens Colour	Part Number
White Housing	White	2JA 004 192-071
Black Housing	White	2JA 004 192-001
White Housing	Red	2JA 004 192-081
Black Housing	Red	2JA 004 192-041

12V / 5W Bulb
(L125)
24V / 5W Bulb
(L245)

**1330 Series**

Surface mounted interior lamps with 2 x 5W bulbs. Suitable for narrow mounting surfaces. Lens milky-white. ON/OFF switch.



Housing Description	Plastic
Bulb	2 x 5W SV8.5 (Not included)
Installation	Screw terminals
Maximum Output	2 x 5W

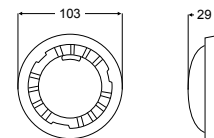
1330 Series Incandescent Interior Lamps

Housing Colour	Part Number
Ivory Housing	2608
Chrome Housing	2JA 001 330-012

12V / 5W Bulb
(L125)
24V / 5W Bulb
(L245)

**3231 Series**

Universal interior lamps for surface mounting. Lens rotates to switch lamp ON and OFF. Can also be operated by remote switch.



Housing Description	Plastic
Bulb	10W or 15W SV8.5 (Not included)
Installation	3 flat plug connectors 6.3mm
Maximum Output	15W

3231 Series Incandescent Interior Lamps

Housing Colour	Part Number
Clear Housing	2JA 003 231-002
Brass Housing	2JA 003 231-022
Chrome Housing	2605

12V / 10W Bulb
(K1210)
24V / 10W Bulb
(K2410)