

Fans

2 Speed "Turbo" Fans

Universal fans from the versatile and well respected "Turbo" range. Can be turned and pivoted in all directions, and locked in position.

- Quality German motor provides very quiet operation.
- 150mm diameter fan blade with guard.
- High air moving capacity with low power consumption.
- Two speed switch in front of the blade guard.
- Side, upright or pendant mounting.

**Material Description**

Impact resistant plastic

Switch

Integrated 2 stage rotary

Output

Speed 1: 70 litre / sec.

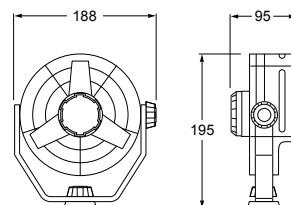
Speed 2: 95 litre / sec.

Power Consumption

6.5W

Installation

Pre-wired with 140mm of cable

**Fan "Turbo"**

Voltage	Housing Colour	Part Number
12V	Black Housing	6100
12V	White Housing	6100-W
24V	Black Housing	6101

Single Speed "Jet" Fan

Economy fan with similar styling to the popular "Turbo" models. Can be turned and pivoted in all directions, and locked in position.

- 130mm diameter fan blade with guard.
- Switch in front of the blade guard.
- Side, upright or pendant mounting.

**Material Description**

Impact resistant plastic

Switch

ON/OFF switch

Output

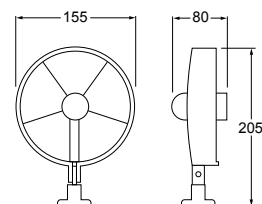
40 litres / sec.

Power Consumption

3.5W

Installation

Pre-wired with 140mm of cable

**Fan "Jet"**

Voltage	Housing Colour	Part Number
12V	Black Housing	6102