

Fluorescent Lamps

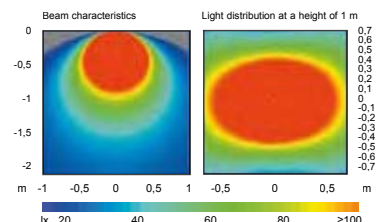
Transistorized Fluorescent Tube Lamps



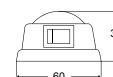
Modern, attractive and power saving fluorescent lights for a variety of interior applications. The combination of advanced electronics and efficient compact fluorescent tubes ensures lower power consumption than incandescent lamps for the same light output.

Further benefits include:

- Flicker free noiseless operation
- Homogeneous spread of light
- Vibration and shock resistance
- Long service life
- Reliable ignition even at extremely low temperatures.
- Prevention of early blackening of the fluorescent tube.
- Reliable lighting for the complete service life of the tube.
- Reverse polarity protection
- ON / OFF switch integrated into housing
- Interference suppressed to VDE 0879



Housing Description	Impact resistant plastic
Light Source	TL8 Fluorescent tube included
Installation	6.3mm flat-plug connectors



Length 255mm		Light output comparison
Part Number	Voltage	Compact 7W fluorescent tube produces light output equivalent to a 40W incandescent bulb.
2642	12V / 7W	
2642-24V	24V / 7W	



Length 355mm		Light output comparison
Part Number	Voltage	Compact 11W fluorescent tube produces light output equivalent to a 75W incandescent bulb.
2643	12V / 11W	
2643-24V	24V / 11W	



Length 440mm		Light output comparison
Part Number	Voltage	Compact 8W fluorescent tube produces light output equivalent to a 40W incandescent bulb.
2644	12V / 8W	
2644-24V	24V / 8W	

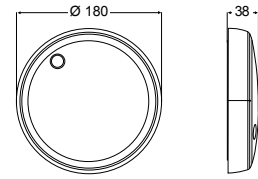
Fluorescent Lamps



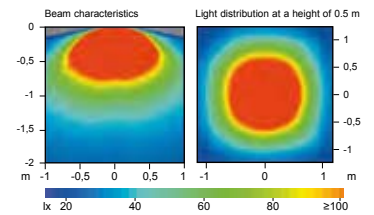
8565 Series



These compact round fluorescent lamps are splash proof, energy efficient, and space saving with a long service life. Multi-voltage electronics provide over-voltage, reverse polarity protection and consistent light output across a range of input voltages from 9-30 DC. Available with a splash proof switch integrated into the lens. Compact 7W fluorescent tube produces light output equivalent to a 40W incandescent bulb.



Housing Description	Plastic lens and housing
Light Source	2G7 Fluorescent tube included
Installation	Pre-wired with 120mm of cable
Operating Voltage	Multi-voltage (10-30V DC)
Nominal Power	7W
Power Consumption	12V, 650 mA, 24V 325 mA
Degree of Protection	IP 6K4



White housing

Part Number	Description
2645SW	With Switch
2645	Without switch