

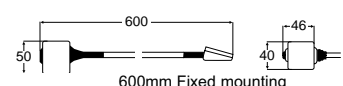
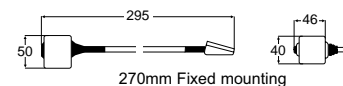
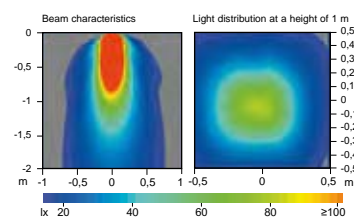
Chart Reading Lamps



4532 Series

Adjustable lamps for navigation areas. Available in fixed mount (Xenon bulb) and plug-in cigarette lighter mounts (Halogen bulb). An ON/OFF switch is integrated into the lamp head. The Xenon bulb fixed mount version provides high levels of light output and long bulb life. A red lens is included for optional 'non glaring' night illumination.

Housing Description	Plastic
Bulb	12V / 5W BA9s included
Installation	Pre-wired with 100mm of cable
Maximum Output	6W



4532 Series

Part Number	Length
2633	295mm
2636	600mm

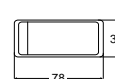
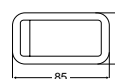
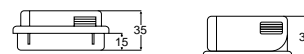
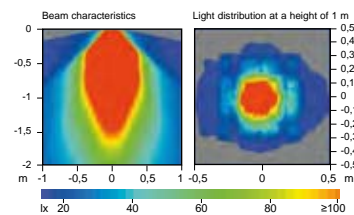
12V / 5W Bulb (YL125)



4813 Series "XENON"

Xenon bulb lamps for chart table lighting or general interior applications. High levels of light output and a long bulb life. Each lamp uses a polished aluminium reflector within a plastic housing and is switched ON and OFF by raising and lowering the lamp head. Vertical and horizontal joint for rotating and pivoting.

Housing Description	Plastic
Bulb	12V / 6W BA9s included
Installation	Pre-wired with 100mm of cable
Maximum Output	10W



Flush mount

Surface mount

4813 Series

Part Number	Mounting Style
2AB 004 813-071	Flush Mount
2AB 004 813-081	Surface Mount (includes screws)

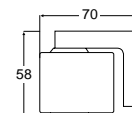
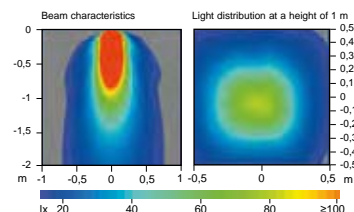
12V / 6W Bulb (HL126X)



4532 Series

Compact and functional mini halogen spot lamps for navigation areas, berths and applications where adjustable light is required. A red lens is included for optional 'non glaring' night illumination. An ON/OFF switch is integrated into the lamp head. Vertical and horizontal joint for rotating and pivoting.

Housing Description	Plastic
Bulb	12V / 5W BA9s included
Installation	Pre-wired with 100mm of cable
Maximum Output	5W



4532 Series

Part Number	Housing Colour
2637	Black
2637-W	White

12V / 5W Bulb (YL125)